

Test Block Bypass **MTB Series**

200 Amp/10K AIC/240 Volt Self-Contained Meter-Main



224MTB



U224MTB

APPLICATION

- Single meter position
- Designed to receive watt-hour meters that meet ANSI C12.10
- Overhead or underground feed
- Surface mount

CONSTRUCTION

- Type 3R construction
- Combination meter/main-safety socket with factory installed 200amp breaker and test/bypass facilities¹
- Snap type sealing ring included
- 5th jaw provision at nine o'clock - U/224MTB only
- Provisions for 2 AW base caps or hub kits on top - overhead units only
- Padlock provision
- Ring style

STANDARDS

- UL 67 listed, complies with ANSI C12.7

FINISH

- ANSI 61 gray acrylic electrocoat finish

ACCESSORIES

- Fifth jaw kit — catalog #50371
- Center and offset pole mounting brackets
- Bussed gutters, see page 75
- AW hubs
- Screw type sealing ring — catalog #25016D
- Steel or clear lexan covers for socket opening

Overhead-Surface Mount

CATALOG NUMBER	MAIN DISCONNECT	BRANCH CIRCUITS	AIC RATING	AMPACITY MAX. CONT.	VOLTAGE	SERVICE TYPE	NUMBER OF JAWS	HUB PROV.	CONDUCTOR LUG RANGE			DIMENSIONS (INCHES)			
									PHASE LINE	CONDUCTOR LOAD	NEUTRAL CONDUCTOR	FIGURE NUMBER	HEIGHT (H)	WIDTH (W)	DEPTH (D)
224MTB	(1) 200A 2P CB	NONE	10K	200 --	120/240	1Ø 3W	4	AW	6 AWG - 250 kcmil	MAIN CIRCUIT BREAKER	6 AWG - 250 kcmil	Fig. 1	48	14	6
225MTB	(1) 200A 3P CB	NONE	10K	200 --	240*	3Ø 3W	5	AW	6 AWG - 250 kcmil	MAIN CIRCUIT BREAKER	6 AWG - 250 kcmil	Fig. 1	48	14	6
227MTB	(1) 200A 3P CB	NONE	10K	200 --	208/120 & 240/120	3Ø 4W	7	AW	6 AWG - 250 kcmil	MAIN CIRCUIT BREAKER	6 AWG - 250 kcmil	Fig. 1	48	14	6

Overhead/Underground-Surface Mount

CATALOG NUMBER	MAIN DISCONNECT	BRANCH CIRCUITS	AIC RATING	AMPACITY MAX. CONT.	VOLTAGE	SERVICE TYPE	NUMBER OF JAWS	HUB PROV.	CONDUCTOR LUG RANGE			DIMENSIONS (INCHES)			
									PHASE LINE	CONDUCTOR LOAD	NEUTRAL CONDUCTOR	FIGURE NUMBER	HEIGHT (H)	WIDTH (W)	DEPTH (D)
U224MTB	(1) 200A 2P CB	NONE	10K	200 --	120/240	1Ø 3W	4	AW	6 AWG - 250 kcmil	MAIN CIRCUIT BREAKER	6 AWG - 250 kcmil	Fig. 2	30	22	6
U225MTB	(1) 200A 3P CB	NONE	10K	200 --	240*	3Ø 3W	5	AW	6 AWG - 250 kcmil	MAIN CIRCUIT BREAKER	6 AWG - 250 kcmil	Fig. 2	30	22	6
U227MTB	(1) 200A 3P CB	NONE	10K	200 --	208/120 & 240/120	3Ø 4W	7	AW	6 AWG - 250 kcmil	MAIN CIRCUIT BREAKER	6 AWG - 250 kcmil	Fig. 2	30	22	6
U224M11TB	(2) 100A 2P CB	NONE	10K	200 --	120/240	1Ø 3W	4	AW	6 AWG - 250 kcmil	MAIN CIRCUIT BREAKER	6 AWG - 250 kcmil	Fig. 3	30	22	6

¹ = 60-in. lbs torque recommended for circuit-closing nut

* For 208/120V, 1Ø 3W systems, order 4-jaw unit and a 5th jaw kit

For Safety Socket Bypass instructions see page 74.

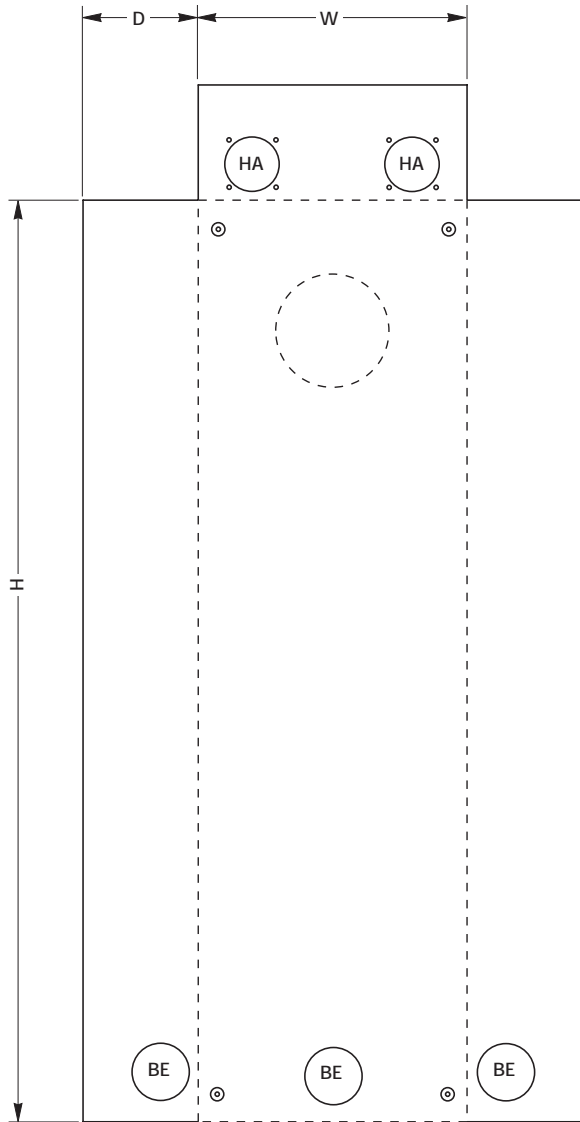


Fig. 1

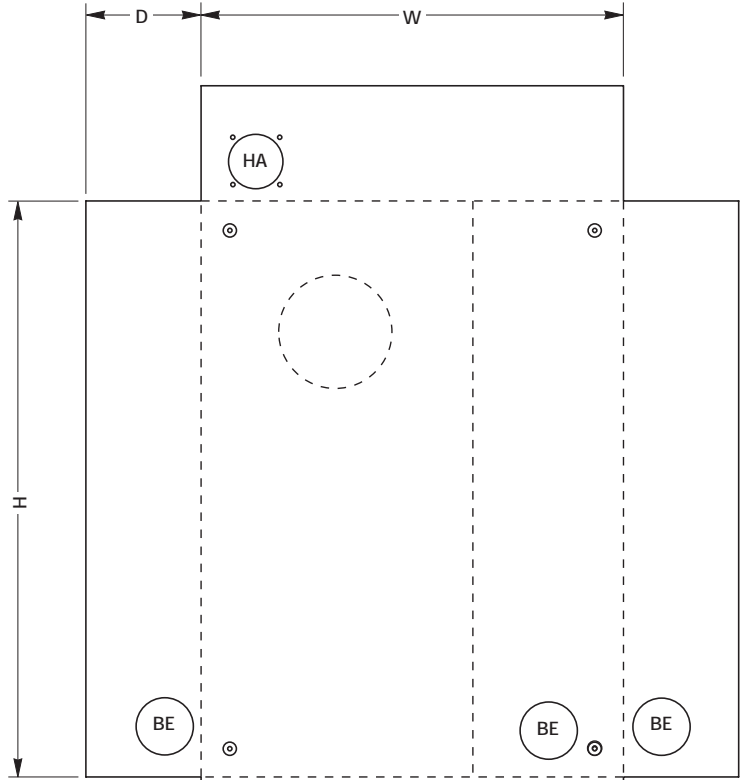
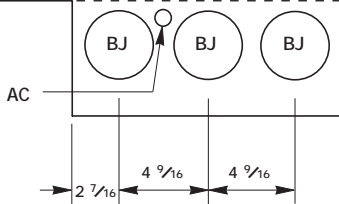


Fig. 2

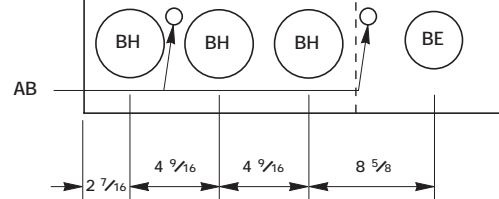
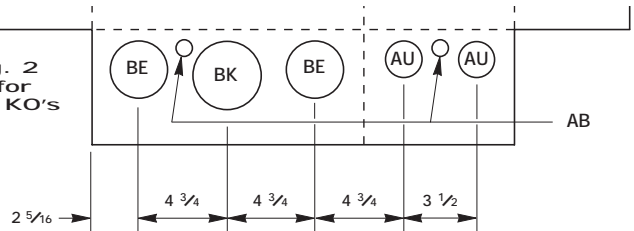


Fig. 3 (see Fig. 2 except for bottom KO's)



Knockouts — Conduit Sizes

- AB = 1/2"
- AC = 1/2" - 1/4"
- AU = 1 1/2" - 1 1/4" - 1" - 3/4"
- BE = 2 1/2" - 2" - 1 1/2" - 1 1/4"
- BH = 3" - 2 1/2"
- BJ = 3" - 2 1/2" - 2"
- BK = 3" - 2 1/2" - 2" - 1 1/2"
- HA = AW HUB