

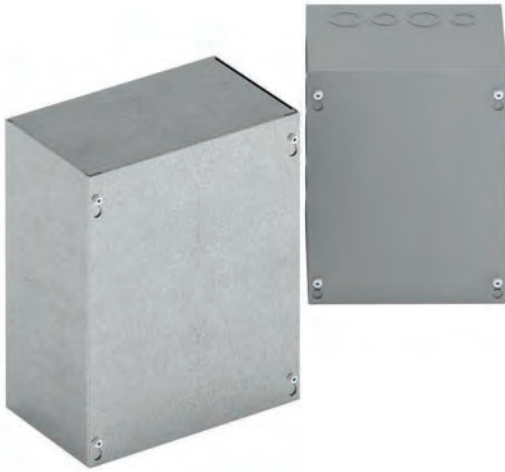
Type 1, 3, & 3R Enclosures

Junction Boxes

Type 1 Screw Cover - Painted & Galvanized

Data and Illustration Sheet

Type 1, 3, & 3R Enclosures



Application

- Used as wiring boxes, junction and pull boxes
- Protects against contact with enclosed equipment

Standards

- UL 50 listed, Type 1
- CSA C22.2 No. 40 certified, Type 1
- Conforms to NEMA standard for Type 1

Finish

- Wash and phosphate undercoat or galvanized steel
- ANSI 61 gray acrylic electrocoat finish

Accessories

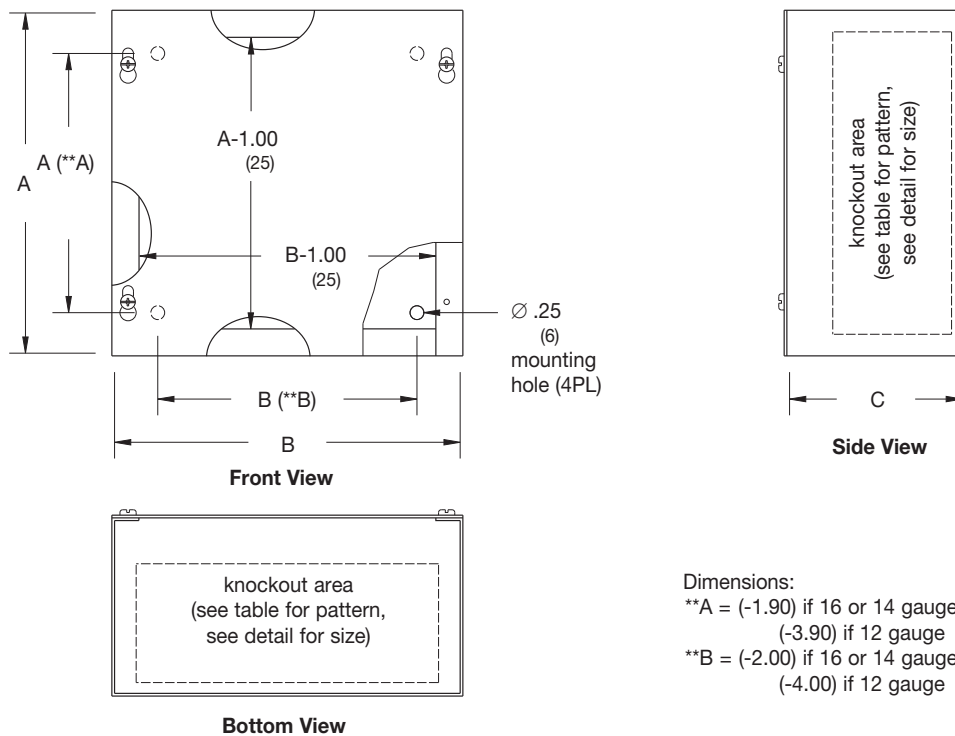
- Ground lug kit
- Touch-up paint
- See Accessories section

Construction

- Enclosure and cover are fabricated from code gauge steel or galvanized steel, (see table)
- Enclosure body has mounting holes on the back
- Enclosures are available with or without knockouts on the sides, top and bottom ends
- Cover is secured to the body with plated hex head combo screws
- Keyhole slots provided in the cover allow easy access to the inside without removing the screws
- #10-32 tapped hole provision for optional ground lug kit

Discount Schedule: A2

Subclass: ANO & AX1



Dimensions:

- **A = (-1.90) if 16 or 14 gauge
(-3.90) if 12 gauge
- **B = (-2.00) if 16 or 14 gauge
(-4.00) if 12 gauge

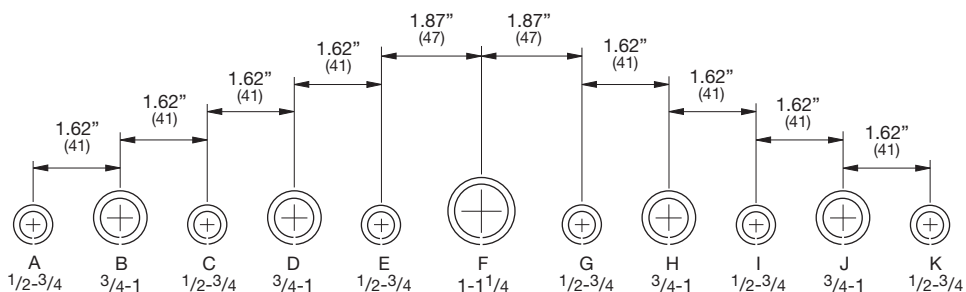
Notes: Cooper B-Line can provide special sizes, finishes and other modifications. Consult the factory for your special requirements. Dimensions are in inches. Millimeters shown are for reference only. Data subject to change without notice.

Type 1, 3, & 3R Enclosures

Junction Boxes Type 1 Screw Cover - Painted & Galvanized Catalog Number

Type 1, 3, & 3R Enclosures

Enclosure Catalog Number				Enclosure Size			Gauge	Knockout Pattern Each Side	Knockout Pattern Top & Bottom
Painted		Galvanized		Height x Width x Depth A x B x C					
KO	No KO	KO	No KO	in.	mm				
443 SC	443 SC NK	443 SCGV	443 SCGV NK	4.00 x 4.00 x 3.00	102 x 102 x 76	16	ⓐⓓ	ⓐⓓ	
444 SC	444 SC NK	444 SCGV	444 SCGV NK	4.00 x 4.00 x 4.00	102 x 102 x 102	16	ⓐⓓ	ⓐⓓ	
644 SC	644 SC NK	644 SCGV	644 SCGV NK	6.00 x 4.00 x 4.00	152 x 102 x 102	16	ⓐⓓⓔ	ⓐⓓ	
663 SC	663 SC NK	663 SCGV	663 SCGV NK	6.00 x 6.00 x 3.00	152 x 152 x 76	16	ⓐⓓⓔ	ⓐⓓⓔ	
664 SC	664 SC NK	664 SCGV	664 SCGV NK	6.00 x 6.00 x 4.00	152 x 152 x 102	16	ⓐⓓⓔ	ⓐⓓⓔ	
863 SC	863 SC NK	863 SCGV	863 SCGV NK	8.00 x 6.00 x 4.300	203 x 152 x 76	16	ⓐⓓⓔⓖⓗ	ⓐⓓⓔ	
864 SC	864 SC NK	864 SCGV	864 SCGV NK	8.00 x 6.00 x 4.00	203 x 152 x 102	16	ⓐⓓⓔⓖⓗ	ⓐⓓⓔ	
884 SC	884 SC NK	884 SCGV	884 SCGV NK	8.00 x 8.00 x 4.00	203 x 203 x 102	16	ⓐⓓⓔⓖⓗ	ⓐⓓⓔⓖⓗ	
--	1064 SC NK	--	1064 SCGV NK	10.00 x 6.00 x 4.00	254 x 152 x 102	16	--	--	
1084 SC	1084 SC NK	1084 SCGV	1084 SCGV NK	10.00 x 8.00 x 4.00	254 x 203 x 102	16	ⓐⓓⓔⓖⓗ	ⓐⓓⓔⓖⓗ	
10104 SC	10104 SC NK	10104 SCGV	10104 SCGV NK	10.00 x 10.00 x 4.00	254 x 254 x 102	16	ⓐⓓⓔⓖⓗ	ⓐⓓⓔⓖⓗ	
1264 SC	1264 SC NK	--	1264 SCGV NK	12.00 x 6.00 x 4.00	305 x 152 x 102	16	ⓐⓓⓔⓖⓗⓑ	ⓐⓓⓔ	
1284 SC	1284 SC NK	1284 SCGV	1284 SCGV NK	12.00 x 8.00 x 4.00	305 x 203 x 102	16	ⓐⓓⓔⓖⓗⓑ	ⓐⓓⓔⓖⓗ	
12104 SC	12104 SC NK	12104 SCGV	12104 SCGV NK	12.00 x 10.00 x 4.00	305 x 254 x 102	16	ⓐⓓⓔⓖⓗⓑ	ⓐⓓⓔⓖⓗⓑ	
12124 SC	12124 SC NK	12124 SCGV	12124 SCGV NK	12.00 x 12.00 x 4.00	305 x 305 x 102	16	ⓐⓓⓔⓖⓗⓑ	ⓐⓓⓔⓖⓗⓑ	
--	15154 SC NK	15154 SCGV	--	15.00 x 15.00 x 4.00	381 x 381 x 102	16	ⓐⓓⓔⓖⓗⓑⓓⓔ	ⓐⓓⓔⓖⓗⓑⓓⓔ	
16124 SC	16124 SC NK	16124 SCGV	16124 SCGV NK	16.00 x 12.00 x 4.00	406 x 305 x 102	16	ⓐⓓⓔⓖⓗⓑⓓⓔ	ⓐⓓⓔⓖⓗⓑ	
16164 SC	16164 SC NK	16164 SCGV	--	16.00 x 16.00 x 4.00	406 x 406 x 102	16	ⓐⓓⓔⓖⓗⓑⓓⓔ	ⓐⓓⓔⓖⓗⓑⓓⓔ	
18124 SC	18124 SC NK	18124 SCGV	18124 SCGV NK	18.00 x 12.00 x 4.00	457 x 305 x 102	16	ⓐⓓⓔⓖⓗⓑⓓⓔⓖⓗⓓⓔ	ⓐⓓⓔⓖⓗⓑ	
--	18154 SC NK	18154 SCGV	--	18.00 x 15.00 x 4.00	457 x 381 x 102	16	ⓐⓓⓔⓖⓗⓑⓓⓔⓖⓗⓓⓔ	ⓐⓓⓔⓖⓗⓑⓓⓔⓖⓗⓓⓔ	
18184 SC	18184 SC NK	18184 SCGV	18184 SCGV NK	18.00 x 18.00 x 4.00	457 x 457 x 102	16	ⓐⓓⓔⓖⓗⓑⓓⓔⓖⓗⓓⓔ	ⓐⓓⓔⓖⓗⓑⓓⓔⓖⓗⓓⓔ	
24124 SC	24124 SC NK	24124 SCGV	--	24.00 x 12.00 x 4.00	610 x 305 x 102	16	ⓐⓓⓔⓖⓗⓑⓓⓔⓖⓗⓓⓔ	ⓐⓓⓔⓖⓗⓑ	
--	24184 SC NK	24184 SCGV	--	24.00 x 18.00 x 4.00	610 x 457 x 102	16	ⓐⓓⓔⓖⓗⓑⓓⓔⓖⓗⓓⓔ	ⓐⓓⓔⓖⓗⓑⓓⓔⓖⓗⓓⓔ	
24244 SC	24244 SC NK	24244 SCGV	24244 SCGV NK	24.00 x 24.00 x 4.00	610 x 610 x 102	14	ⓐⓓⓔⓖⓗⓑⓓⓔⓖⓗⓓⓔ	ⓐⓓⓔⓖⓗⓑⓓⓔⓖⓗⓓⓔ	
--	30184 SC NK	30184 SCGV	30184 SCGV NK	30.00 x 18.00 x 4.00	762 x 457 x 102	16	ⓐⓓⓔⓖⓗⓑⓓⓔⓖⓗⓓⓔ	ⓐⓓⓔⓖⓗⓑⓓⓔⓖⓗⓓⓔ	
30244 SC	30244 SC NK	30244 SCGV	30244 SCGV NK	30.00 x 24.00 x 4.00	762 x 610 x 102	14	ⓐⓓⓔⓖⓗⓑⓓⓔⓖⓗⓓⓔ	ⓐⓓⓔⓖⓗⓑⓓⓔⓖⓗⓓⓔ	
-	30304 SC NK	-	30304 SCGV NK	30.00 x 30.00 x 4.00	762 x 762 x 102	12	--	--	



Conduit Sizes

Knockout Detail

Note: See table for applicable knockout pattern.

Notes: Dimensions are in inches. Millimeters shown are for reference only. Data subject to change without notice.