

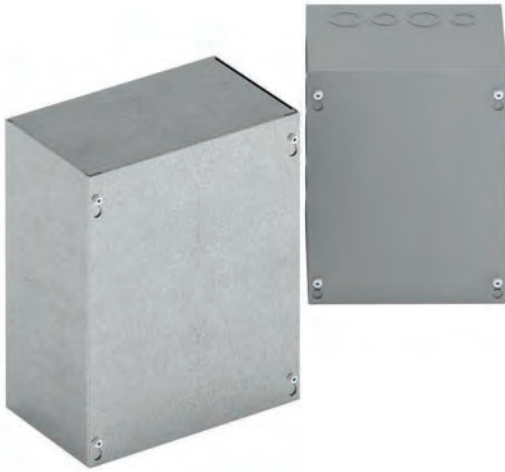
Type 1, 3, & 3R Enclosures

Junction Boxes

Type 1 Screw Cover - Painted & Galvanized

Data and Illustration Sheet

Type 1, 3, & 3R Enclosures



Application

- Used as wiring boxes, junction and pull boxes
- Protects against contact with enclosed equipment

Standards

- UL 50 listed, Type 1
- CSA C22.2 No. 40 certified, Type 1
- Conforms to NEMA standard for Type 1

Finish

- Wash and phosphate undercoat or galvanized steel
- ANSI 61 gray acrylic electrocoat finish

Accessories

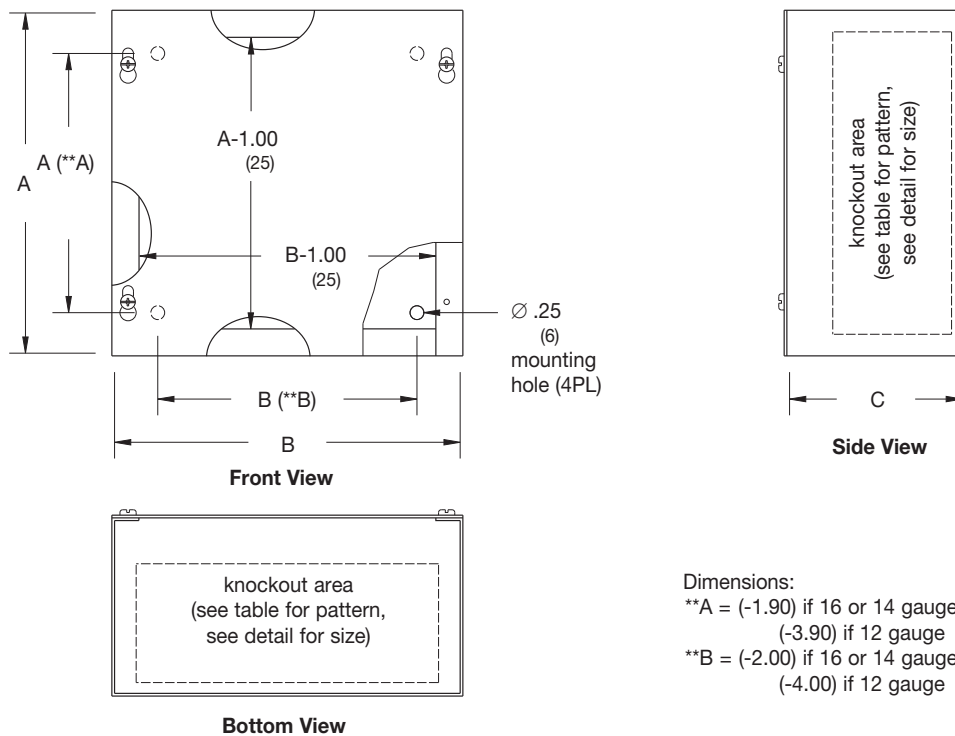
- Ground lug kit
- Touch-up paint
- See Accessories section

Construction

- Enclosure and cover are fabricated from code gauge steel or galvanized steel, (see table)
- Enclosure body has mounting holes on the back
- Enclosures are available with or without knockouts on the sides, top and bottom ends
- Cover is secured to the body with plated hex head combo screws
- Keyhole slots provided in the cover allow easy access to the inside without removing the screws
- #10-32 tapped hole provision for optional ground lug kit

Discount Schedule: A2

Subclass: ANO & AX1



Dimensions:

- **A = (-1.90) if 16 or 14 gauge
(-3.90) if 12 gauge
- **B = (-2.00) if 16 or 14 gauge
(-4.00) if 12 gauge

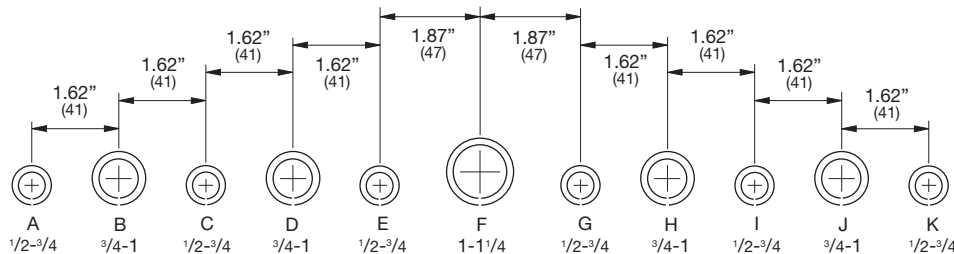
Notes: Cooper B-Line can provide special sizes, finishes and other modifications. Consult the factory for your special requirements. Dimensions are in inches. Millimeters shown are for reference only. Data subject to change without notice.

Type 1, 3, & 3R Enclosures

Junction Boxes Type 1 Screw Cover - Painted & Galvanized Catalog Number

Type 1, 3, & 3R Enclosures

| Enclosure Catalog Number | | | | Enclosure Size | | Gauge | Knockout Pattern | Knockout Pattern |
|--------------------------|-------------|------------|---------------|------------------------|-------------------|-------|---------------------|---------------------|
| Painted | | Galvanized | | Height x Width x Depth | | | | |
| KO | No KO | KO | No KO | in. | mm | | | |
| 666 SC | 666 SC NK | 666 SCGV | 666 SCGV NK | 6.00 x 6.00 x 6.00 | 152 x 152 x 152 | 16 | (C D E) | (C D E) |
| 866 SC | 866 SC NK | 866 SCGV | 866 SCGV NK | 8.00 x 6.00 x 6.00 | 203 x 152 x 152 | 16 | (G H I J) | (C D E) |
| 886 SC | 886 SC NK | 886 SCGV | 886 SCGV NK | 8.00 x 8.00 x 6.00 | 203 x 203 x 152 | 16 | (G H I J) | (G H I J) |
| 1086 SC | 1086 SC NK | 1086 SCGV | 1086 SCGV NK | 10.00 x 8.00 x 6.00 | 254 x 203 x 152 | 16 | (D E F G H) | (G H I J) |
| 10106 SC | 10106 SC NK | 10106 SCGV | 10106 SCGV NK | 10.00 x 10.00 x 6.00 | 254 x 254 x 152 | 16 | (D E F G H) | (D E F G H) |
| -- | 1266 SC NK | -- | -- | 12.00 x 6.00 x 6.00 | 305 x 152 x 152 | 16 | -- | -- |
| -- | 1286 SC NK | -- | 1286 SCGV NK | 12.00 x 8.00 x 6.00 | 305 x 203 x 152 | 16 | -- | -- |
| 12106 SC | 12106 SC NK | 12106 SCGV | 12106 SCGV NK | 12.00 x 10.00 x 6.00 | 305 x 254 x 152 | 16 | (D E F G H) | (D E F G H) |
| 12126 SC | 12126 SC NK | 12126 SCGV | 12126 SCGV NK | 12.00 x 12.00 x 6.00 | 305 x 305 x 152 | 16 | (D E F G H) | (D E F G H) |
| -- | 15156 SC NK | -- | 15156 SCGV NK | 15.00 x 15.00 x 6.00 | 381 x 381 x 152 | 16 | -- | -- |
| 16126 SC | 16126 SC NK | 16126 SCGV | 16126 SCGV NK | 16.00 x 12.00 x 6.00 | 406 x 305 x 152 | 16 | (C D E F G H I) | (D E F G H) |
| 16166 SC | 16166 SC NK | 16166 SCGV | 16166 SCGV NK | 16.00 x 16.00 x 6.00 | 406 x 406 x 152 | 16 | (C D E F G H I) | (B C D E F G H I J) |
| 18126 SC | 18126 SC NK | 18126 SCGV | 18126 SCGV NK | 18.00 x 12.00 x 6.00 | 457 x 305 x 152 | 16 | (B C D E F G H I J) | (D E F G H) |
| -- | 18156 SC NK | -- | 18156 SCGV NK | 18.00 x 15.00 x 6.00 | 457 x 381 x 152 | 16 | -- | -- |
| 18186 SC | 18186 SC NK | 18186 SCGV | 18186 SCGV NK | 18.00 x 18.00 x 6.00 | 457 x 457 x 152 | 16 | (B C D E F G H I J) | (B C D E F G H I J) |
| -- | 24126 SC NK | -- | 24126 SCGV NK | 24.00 x 12.00 x 6.00 | 610 x 305 x 152 | 16 | -- | -- |
| 24186 SC | 24186 SC NK | 24186 SCGV | 24186 SCGV NK | 24.00 x 18.00 x 6.00 | 610 x 457 x 152 | 16 | (B C D E F G H I J) | (B C D E F G H I J) |
| -- | 24206 SC NK | -- | 24206 SCGV NK | 24.00 x 20.00 x 6.00 | 610 x 508 x 152 | 14 | -- | -- |
| 24246 SC | 24246 SC NK | 24246 SCGV | 24246 SCGV NK | 24.00 x 24.00 x 6.00 | 610 x 610 x 152 | 14 | (B C D E F G H I J) | (B C D E F G H I J) |
| -- | 30186 SC NK | -- | 30186 SCGV NK | 30.00 x 18.00 x 6.00 | 762 x 457 x 152 | 16 | -- | -- |
| 30246 SC | 30246 SC NK | 30246 SCGV | 30246 SCGV NK | 30.00 x 24.00 x 6.00 | 762 x 610 x 152 | 14 | (B C D E F G H I J) | (B C D E F G H I J) |
| -- | 30306 SC NK | -- | 30306 SCGV NK | 30.00 x 30.00 x 6.00 | 762 x 762 x 152 | 12 | -- | -- |
| 36246 SC | 36246 SC NK | -- | 36246 SCGV NK | 36.00 x 24.00 x 6.00 | 914 x 310 x 152 | 14 | (B C D E F G H I J) | (B C D E F G H I J) |
| -- | 36306 SC NK | -- | 36306 SCGV NK | 36.00 x 30.00 x 6.00 | 914 x 762 x 152 | 12 | -- | -- |
| -- | 36366 SC NK | -- | 36366 SCGV NK | 36.00 x 36.00 x 6.00 | 914 x 914 x 152 | 12 | -- | -- |
| -- | 48366 SC NK | -- | 48366 SCGV NK | 48.00 x 36.00 x 6.00 | 1219 x 914 x 152 | 12 | -- | -- |
| -- | 48486 SC NK | -- | 48486 SCGV NK | 48.00 x 48.00 x 6.00 | 1219 x 1219 x 152 | 12 | -- | -- |
| 888 SC | 888 SC NK | 888 SCGV | 888 SCGV NK | 8.00 x 8.00 x 8.00 | 203 x 203 x 203 | 16 | (G H I J) | (G H I J) |
| -- | 10108 SC NK | -- | 10108 SCGV NK | 10.00 x 10.00 x 8.00 | 254 x 254 x 203 | 16 | -- | -- |
| 12128 SC | 12128 SC NK | -- | 12128 SCGV NK | 12.00 x 12.00 x 8.00 | 305 x 305 x 203 | 16 | (D E F G H) | (D E F G H) |
| 16128 SC | 16128 SC NK | -- | 16128 SCGV NK | 16.00 x 12.00 x 8.00 | 406 x 305 x 203 | 16 | (C D E F G H I) | (D E F G H) |
| 18128 SC | 18128 SC NK | -- | 18128 SCGV NK | 18.00 x 12.00 x 8.00 | 457 x 305 x 203 | 16 | (B C D E F G H I J) | (D E F G H) |
| 18188 SC | 18188 SC NK | -- | 18188 SCGV NK | 18.00 x 18.00 x 8.00 | 457 x 457 x 203 | 16 | (B C D E F G H I J) | (B C D E F G H I J) |
| 24128 SC | 24128 SC NK | -- | 24128 SCGV NK | 24.00 x 12.00 x 8.00 | 610 x 305 x 203 | 16 | (B C D E F G H I J) | (D E F G H) |
| 24188 SC | 24188 SC NK | -- | 24188 SCGV NK | 24.00 x 18.00 x 8.00 | 610 x 457 x 203 | 16 | (B C D E F G H I J) | (B C D E F G H I J) |
| -- | 24208 SC NK | -- | 24208 SCGV NK | 24.00 x 20.00 x 8.00 | 610 x 508 x 203 | 14 | -- | -- |
| 24248 SC | 24248 SC NK | -- | 24248 SCGV NK | 24.00 x 24.00 x 8.00 | 610 x 610 x 203 | 14 | (B C D E F G H I J) | (B C D E F G H I J) |
| 30248 SC | 30248 SC NK | 30248 SCGV | 30248 SCGV NK | 30.00 x 24.00 x 8.00 | 762 x 610 x 203 | 14 | (B C D E F G H I J) | (B C D E F G H I J) |
| -- | 30308 SC NK | -- | 30308 SCGV NK | 30.00 x 30.00 x 8.00 | 762 x 762 x 203 | 12 | -- | -- |
| 36248 SC | 36248 SC NK | -- | 36248 SCGV NK | 36.00 x 24.00 x 8.00 | 914 x 610 x 203 | 14 | (B C D E F G H I J) | (B C D E F G H I J) |
| -- | 36308 SC NK | -- | 36308 SCGV NK | 36.00 x 30.00 x 8.00 | 914 x 762 x 203 | 14 | -- | -- |



Conduit Sizes Knockout Detail - Note: See table for applicable knockout pattern.

Notes: Dimensions are in inches. Millimeters shown are for reference only. Data subject to change without notice.