

Type 1, 3, & 3R Enclosures

Junction Boxes

Type 3R Screw Cover - Painted & Galvanized

Data and Illustration Sheet

Type 1, 3, & 3R Enclosures



Application

- Used as wiring boxes, junction and pull boxes
- Protects against falling rain, sleet and external ice formation

Standards

- UL 50 listed, Type 3R
- CSA C22.2 No. 40 certified, Type 3R
- Conforms to NEMA standard for Type 3R

Finish

- Wash and phosphate undercoat
- ANSI 61 gray acrylic electrocoat finish

Accessories

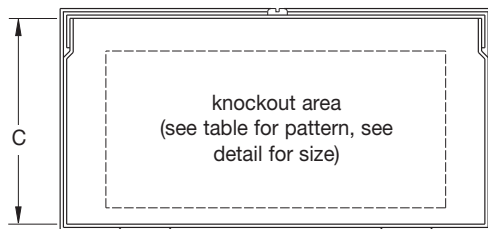
- Touch-up paint
- See Accessories section

Construction

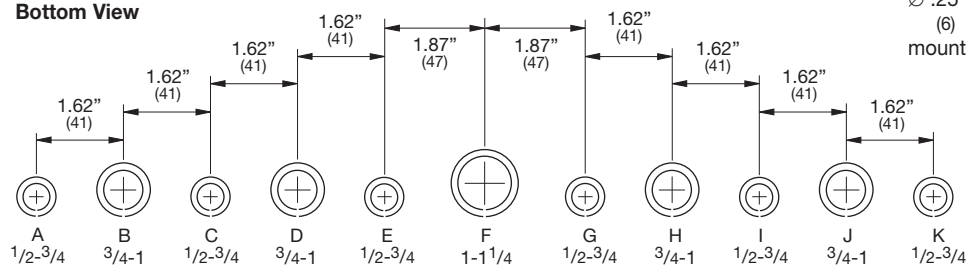
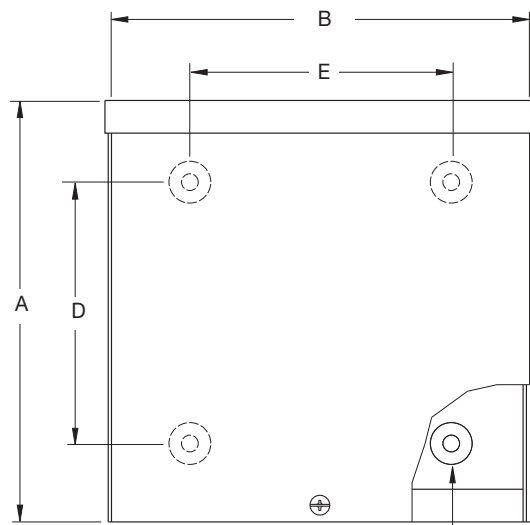
- Enclosure and cover are fabricated from code gauge galvaneal steel for painted or galvanized steel, (see table, page 57)
- Enclosure body has embossed mounting holes on the back
- Available with or without knockouts on the bottom end of enclosures less than 30 inches wide
- Cover is held secure by sliding it under the top end flange and fastening it with plated screws on the bottom end flange, (larger sizes use two studs and wing nuts)

Discount Schedule: A2

Subclass: AS0 & Z60



Bottom View



Conduit Sizes

Knockout Detail

Note: See table for applicable knockout pattern.

Notes: Cooper B-Line can provide special sizes, finishes and other modifications. Consult the factory for your special requirements. Dimensions are in inches. Millimeters shown are for reference only. Data subject to change without notice.

Type 1, 3, & 3R Enclosures

Junction Boxes - Type 3R Screw Cover - Painted & Galvanized Catalog Number

Type 1, 3, & 3R Enclosures

| Enclosure Catalog Number | | | | Enclosure Size Height x Width x Dept A x B x C | | D | | E | | Gauge | Knockout Pattern Bottom |
|--------------------------|----------------|--------------|------------------|--|-----------------|-------|-----|-------|-----|-------|-----------------------------------|
| Painted | | Galvanized | | in. | mm | in. | mm | in. | mm | | |
| KO | No KO | KO | No KO | | | | | | | | |
| 444 RTSC | 444 RTSC NK | 444 RTSCGV | -- | 4.00 x 4.00 x 4.00 | 102 x 102 x 102 | 1.50 | 38 | 1.81 | 46 | 16 | (C D) |
| 644 RTSC | 644 RTSC NK | -- | -- | 6.00 x 4.00 x 4.00 | 152 x 102 x 102 | 3.50 | 89 | 1.81 | 46 | 16 | (C D) |
| 664 RTSC | 664 RTSC NK | 664 RTSCGV | 664 RTSCGV NK | 6.00 x 6.00 x 4.00 | 152 x 152 x 102 | 3.50 | 89 | 3.81 | 97 | 16 | (C D E) |
| 864 RTSC | 864 RTSC NK | -- | -- | 8.00 x 6.00 x 4.00 | 203 x 152 x 102 | 5.50 | 140 | 3.81 | 97 | 16 | (C D E) |
| 884 RTSC | 884 RTSC NK | 884 RTSCGV | 884 RTSCGV NK | 8.00 x 8.00 x 4.00 | 203 x 203 x 102 | 5.50 | 140 | 5.81 | 148 | 16 | (G H I J) |
| 1084 RTSC | 1084 RTSC NK | -- | -- | 10.00 x 8.00 x 4.00 | 254 x 203 x 102 | 7.50 | 191 | 5.81 | 148 | 16 | (G H I J) |
| 10104 RTSC | 10104 RTSC NK | 10104 RTSCGV | 10104 RTSCGV NK | 10.00 x 10.00 x 4.00 | 254 x 254 x 102 | 7.50 | 191 | 7.81 | 198 | 16 | (D E F G H) |
| 1284 RTSC | 1284 RTSC NK | -- | -- | 12.00 x 8.00 x 4.00 | 305 x 203 x 102 | 9.50 | 241 | 5.81 | 148 | 16 | (G H I J) |
| 12104 RTSC | 12104 RTSC NK | -- | -- | 12.00 x 10.00 x 4.00 | 305 x 254 x 102 | 9.50 | 241 | 7.81 | 198 | 16 | (D E F G H) |
| 12124 RTSC | 12124 RTSC NK | 12124 RTSCGV | 12124 RTSCGV NK | 12.00 x 12.00 x 4.00 | 305 x 305 x 102 | 9.50 | 241 | 9.81 | 249 | 16 | (D E F G H) |
| 15124 RTSC | -- | -- | -- | 15.00 x 12.00 x 4.00 | 381 x 305 x 102 | 12.50 | 318 | 9.81 | 249 | 16 | (D E F G H) |
| 16124 RTSC | 16124 RTSC NK | -- | -- | 16.00 x 12.00 x 4.00 | 406 x 305 x 102 | 13.50 | 343 | 9.81 | 249 | 16 | (D E F G H) |
| 16164 RTSC | 16164 RTSC NK | -- | -- | 16.00 x 16.00 x 4.00 | 406 x 406 x 102 | 13.50 | 343 | 13.81 | 351 | 16 | (C D E F G H I) |
| 18124 RTSC | -- | -- | -- | 18.00 x 12.00 x 4.00 | 457 x 305 x 102 | 15.50 | 394 | 9.81 | 249 | 16 | (D E F G H) |
| 18184 RTSC | 18184 RTSC NK | -- | -- | 18.00 x 18.00 x 4.00 | 457 x 457 x 102 | 15.50 | 394 | 15.81 | 402 | 16 | (B C D E F G H I J) |
| 24244 RTSC | 24244 RTSC NK | -- | -- | 24.00 x 24.00 x 4.00 | 610 x 610 x 102 | 21.50 | 546 | 21.56 | 548 | 14 | (B C D E F G H I J) |
| 666 RTSC | 666 RTSC NK | 666 RTSCGV | 666 RTSCGV NK | 6.00 x 6.00 x 6.00 | 152 x 152 x 152 | 3.50 | 89 | 3.81 | 97 | 16 | (C D E) |
| 866 RTSC | 866 RTSC NK | -- | -- | 8.00 x 6.00 x 6.00 | 203 x 152 x 152 | 5.50 | 140 | 3.81 | 97 | 16 | (C D E) |
| 886 RTSC | 886 RTSC NK | 886 RTSCGV | 886 RTSCGV NK | 8.00 x 8.00 x 6.00 | 203 x 203 x 152 | 5.50 | 140 | 5.81 | 148 | 16 | (G H I J) |
| 1086 RTSC | 1086 RTSC NK | -- | -- | 10.00 x 8.00 x 6.00 | 254 x 203 x 152 | 7.50 | 191 | 5.81 | 148 | 16 | (G H I J) |
| 10106 RTSC | 10106 RTSC NK | 10106 RTSCGV | 10106 RTSCGV NK | 10.00 x 10.00 x 6.00 | 254 x 254 x 152 | 7.50 | 191 | 7.81 | 198 | 16 | (D E F G H) |
| 1286 RTSC | -- | -- | -- | 12.00 x 8.00 x 6.00 | 305 x 203 x 152 | 9.50 | 241 | 5.81 | 148 | 16 | (G H I J) |
| 12106 RTSC | 12106 RTSC NK | -- | -- | 12.00 x 10.00 x 6.00 | 305 x 254 x 152 | 9.50 | 241 | 7.81 | 198 | 16 | (D E F G H) |
| 12126 RTSC | 12126 RTSC NK | 12126 RTSCGV | 12126 RTSCGV NK | 12.00 x 12.00 x 6.00 | 305 x 305 x 152 | 9.50 | 241 | 9.81 | 249 | 16 | (D E F G H) |
| 16126 RTSC | 16126 RTSC NK | -- | -- | 16.00 x 12.00 x 6.00 | 406 x 305 x 152 | 13.50 | 343 | 9.81 | 249 | 16 | (D E F G H) |
| 16166 RTSC | 16166 RTSC NK | -- | -- | 16.00 x 16.00 x 6.00 | 406 x 406 x 152 | 13.50 | 343 | 13.81 | 351 | 16 | (C D E F G H I) |
| 18126 RTSC | 18126 RTSC NK | -- | 18126 RTSCGV NK | 18.00 x 12.00 x 6.00 | 457 x 305 x 152 | 15.50 | 394 | 9.81 | 249 | 16 | (D E F G H) |
| 18186 RTSC | 18186 RTSC NK | 18186 RTSCGV | 18186 RTSCGV NK | 18.00 x 18.00 x 6.00 | 457 x 457 x 152 | 15.50 | 394 | 15.81 | 402 | 16 | (B C D E F G H I J) |
| 24126 RTSC | 24126 RTSC NK | -- | -- | 24.00 x 12.00 x 6.00 | 610 x 305 x 152 | 21.50 | 546 | 9.81 | 249 | 16 | (D E F G H) |
| 24186 RTSC | 24186 RTSC NK | -- | -- | 24.00 x 18.00 x 6.00 | 610 x 457 x 152 | 21.50 | 546 | 15.81 | 402 | 16 | (B C D E F G H I J) |
| 24246 RTSC | 24246 RTSC NK | -- | 24246 RTSCGV NK | 24.00 x 24.00 x 6.00 | 610 x 610 x 152 | 21.50 | 546 | 21.56 | 548 | 14 | (B C D E F G H I J) |
| -- | 36366 RTSC NK | -- | -- | 36.00 x 36.00 x 6.00 | 914 x 914 x 152 | 33.50 | 851 | 33.56 | 852 | 12 | -- |
| 10108 RTSC | 10108 RTSC NK | -- | 10108 RTSCGV NK | 10.00 x 10.00 x 8.00 | 254 x 254 x 203 | 7.50 | 191 | 7.81 | 198 | 16 | (D E F G H) |
| 12128 RTSC | 12128 RTSC NK | -- | 12128 RTSCGV NK | 12.00 x 12.00 x 8.00 | 305 x 305 x 203 | 9.50 | 241 | 9.81 | 249 | 16 | (D E F G H) |
| 18128 RTSC | 18128 RTSC NK | -- | -- | 18.00 x 12.00 x 8.00 | 457 x 305 x 203 | 15.50 | 394 | 9.81 | 249 | 16 | (D E F G H) |
| 18188 RTSC | 18188 RTSC NK | -- | 18188 RTSCGV NK | 18.00 x 18.00 x 8.00 | 457 x 457 x 203 | 15.50 | 394 | 15.81 | 402 | 16 | (B C D E F G H I J) |
| 24168 RTSC | 24168 RTSC NK | -- | -- | 24.00 x 16.00 x 8.00 | 610 x 406 x 203 | 21.50 | 546 | 13.81 | 351 | 16 | (C D E F G H I) |
| 24188 RTSC | 24188 RTSC NK | -- | -- | 24.00 x 18.00 x 8.00 | 610 x 457 x 203 | 21.50 | 546 | 15.81 | 402 | 16 | (B C D E F G H I J) |
| 24248 RTSC | 24248 RTSC NK | -- | 24248 RTSCGV NK | 24.00 x 24.00 x 8.00 | 610 x 610 x 203 | 21.50 | 546 | 21.56 | 548 | 14 | (B C D E F G H I J) |
| -- | 36368 RTSC NK | -- | -- | 36.00 x 36.00 x 8.00 | 914 x 914 x 203 | 35.50 | 851 | 33.56 | 852 | 12 | -- |
| 121210 RTSC | 121210 RTSC NK | -- | -- | 12.00 x 12.00 x 10.00 | 305 x 305 x 254 | 9.50 | 241 | 9.81 | 249 | 16 | (D E F G H) |
| 181210 RTSC | -- | -- | -- | 18.00 x 12.00 x 10.00 | 457 x 305 x 254 | 15.50 | 394 | 9.81 | 249 | 16 | (D E F G H) |
| 181810 RTSC | 181810 RTSC NK | -- | -- | 18.00 x 18.00 x 10.00 | 457 x 457 x 254 | 15.50 | 394 | 15.81 | 402 | 16 | (B C D E F G H I J) |
| 241810 RTSC | 241810 RTSC NK | -- | -- | 24.00 x 18.00 x 10.00 | 610 x 457 x 254 | 21.50 | 546 | 15.81 | 402 | 16 | (B C D E F G H I J) |
| 242410 RTSC | 242410 RTSC NK | -- | 242410 RTSCGV NK | 24.00 x 24.00 x 10.00 | 610 x 610 x 254 | 21.50 | 546 | 21.56 | 548 | 14 | (B C D E F G H I J) |
| 302410 RTSC | 302410 RTSC NK | -- | -- | 30.00 x 24.00 x 10.00 | 762 x 610 x 254 | 27.50 | 699 | 21.56 | 548 | 14 | (B C D E F G H I J) |
| -- | 303010 RTSC NK | -- | -- | 30.00 x 30.00 x 10.00 | 762 x 762 x 254 | 27.50 | 699 | 27.56 | 700 | 12 | -- |
| 242412 RTSC | 242412 RTSC NK | -- | 242412 RTSCGV NK | 24.00 x 24.00 x 12.00 | 610 x 610 x 305 | 21.50 | 546 | 21.56 | 548 | 14 | (B C D E F G H I J) |
| 302412 RTSC | 302412 RTSC NK | -- | -- | 30.00 x 24.00 x 12.00 | 762 x 610 x 305 | 27.50 | 699 | 21.56 | 548 | 14 | (B C D E F G H I J) |
| -- | 303012 RTSC NK | -- | -- | 30.00 x 30.00 x 12.00 | 762 x 762 x 305 | 27.50 | 699 | 27.56 | 700 | 14 | -- |
| 362412 RTSC | 362412 RTSC NK | -- | -- | 36.00 x 24.00 x 12.00 | 914 x 610 x 305 | 33.50 | 851 | 21.56 | 548 | 14 | (B C D E F G H I J) |
| -- | 363012 RTSC NK | -- | -- | 36.00 x 30.00 x 12.00 | 914 x 762 x 305 | 33.50 | 851 | 27.56 | 700 | 12 | -- |
| -- | 363612 RTSC NK | -- | 363612 RTSCGV NK | 36.00 x 36.00 x 12.00 | 914 x 914 x 305 | 33.50 | 851 | 33.56 | 852 | 12 | -- |

Notes: Dimensions are in inches. Millimeters shown are for reference only. Data subject to change without notice.