

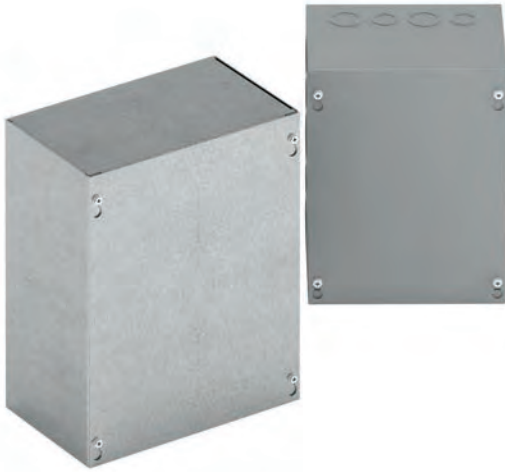
Type 1, 3, & 3R Enclosures

Junction Boxes

Type 1 Screw Cover - Painted & Galvanized

Data and Illustration Sheet

Type 1, 3, & 3R Enclosures



Application

- Used as wiring boxes, junction and pull boxes
- Protects against contact with enclosed equipment

Standards

- UL 50 listed, Type 1
- CSA C22.2 No. 40 certified, Type 1
- Conforms to NEMA standard for Type 1

Finish

- Wash and phosphate undercoat or galvanized steel
- ANSI 61 gray acrylic electrocoat finish

Accessories

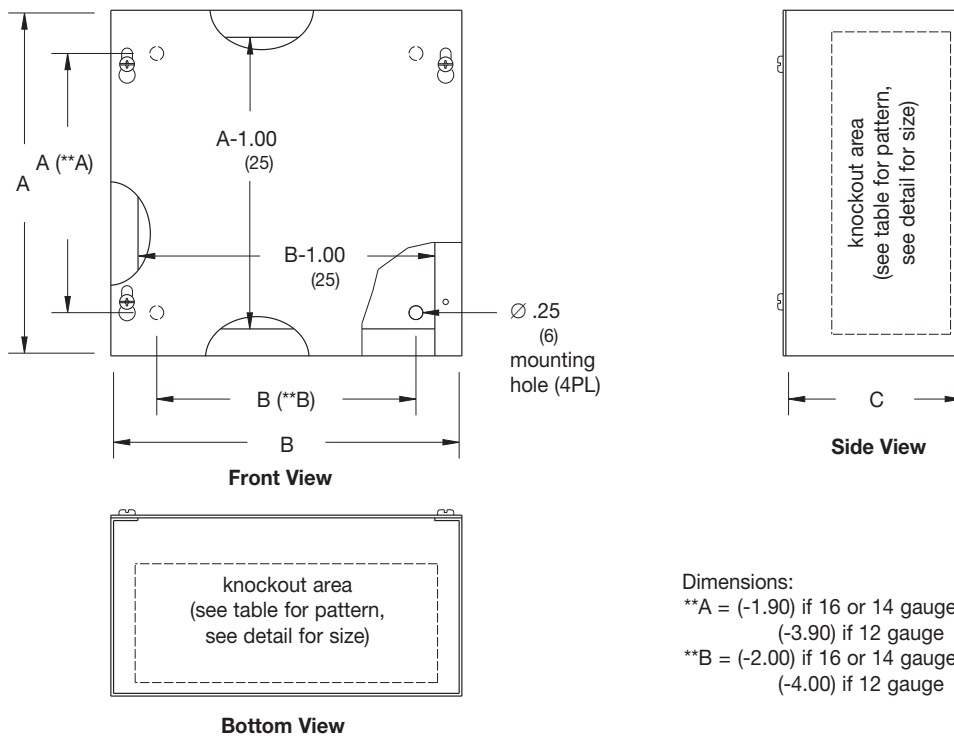
- Ground lug kit
- Touch-up paint
- See Accessories section

Construction

- Enclosure and cover are fabricated from code gauge steel or galvanized steel, (see table)
- Enclosure body has mounting holes on the back
- Enclosures are available with or without knockouts on the sides, top and bottom ends
- Cover is secured to the body with plated hex head combo screws
- Keyhole slots provided in the cover allow easy access to the inside without removing the screws
- #10-32 tapped hole provision for optional ground lug kit

Discount Schedule: A2

Subclass: ANO & AX1



Dimensions:

- **A = (-1.90) if 16 or 14 gauge
(-3.90) if 12 gauge
- **B = (-2.00) if 16 or 14 gauge
(-4.00) if 12 gauge

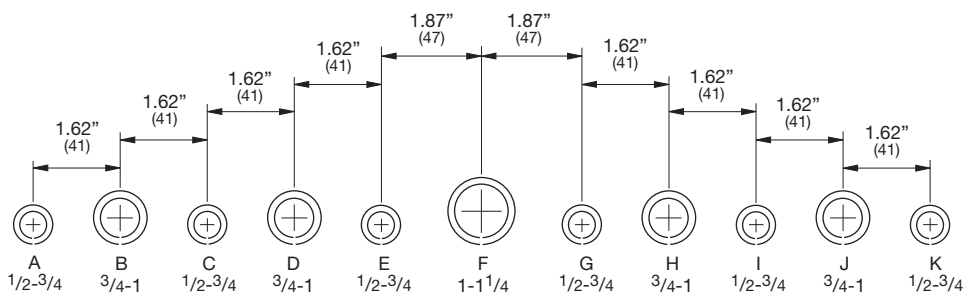
Notes: Cooper B-Line can provide special sizes, finishes and other modifications. Consult the factory for your special requirements. Dimensions are in inches. Millimeters shown are for reference only. Data subject to change without notice.

Type 1, 3, & 3R Enclosures

Junction Boxes Type 1 Screw Cover - Painted & Galvanized Catalog Number

Type 1, 3, & 3R Enclosures

| Enclosure Catalog Number | | | | Enclosure Size | | | Gauge | Knockout Pattern Each Side | Knockout Pattern Top & Bottom |
|--------------------------|-------------|------------|---------------|-------------------------------------|-----------------|----|----------|-------------------------------|----------------------------------|
| Painted | | Galvanized | | Height x Width x Depth A x B x C | | | | | |
| KO | No KO | KO | No KO | in. | mm | | | | |
| 443 SC | 443 SC NK | 443 SCGV | 443 SCGV NK | 4.00 x 4.00 x 3.00 | 102 x 102 x 76 | 16 | ⓐⓓ | ⓐⓓ | |
| 444 SC | 444 SC NK | 444 SCGV | 444 SCGV NK | 4.00 x 4.00 x 4.00 | 102 x 102 x 102 | 16 | ⓐⓓ | ⓐⓓ | |
| 644 SC | 644 SC NK | 644 SCGV | 644 SCGV NK | 6.00 x 4.00 x 4.00 | 152 x 102 x 102 | 16 | ⓐⓓⓔ | ⓐⓓ | |
| 663 SC | 663 SC NK | 663 SCGV | 663 SCGV NK | 6.00 x 6.00 x 3.00 | 152 x 152 x 76 | 16 | ⓐⓓⓔ | ⓐⓓⓔ | |
| 664 SC | 664 SC NK | 664 SCGV | 664 SCGV NK | 6.00 x 6.00 x 4.00 | 152 x 152 x 102 | 16 | ⓐⓓⓔ | ⓐⓓⓔ | |
| 863 SC | 863 SC NK | 863 SCGV | 863 SCGV NK | 8.00 x 6.00 x 4.300 | 203 x 152 x 76 | 16 | ⓐⓓⓔⓖⓗ | ⓐⓓⓔ | |
| 864 SC | 864 SC NK | 864 SCGV | 864 SCGV NK | 8.00 x 6.00 x 4.00 | 203 x 152 x 102 | 16 | ⓐⓓⓔⓖⓗ | ⓐⓓⓔ | |
| 884 SC | 884 SC NK | 884 SCGV | 884 SCGV NK | 8.00 x 8.00 x 4.00 | 203 x 203 x 102 | 16 | ⓐⓓⓔⓖⓗ | ⓐⓓⓔⓖⓗ | |
| -- | 1064 SC NK | -- | 1064 SCGV NK | 10.00 x 6.00 x 4.00 | 254 x 152 x 102 | 16 | -- | -- | |
| 1084 SC | 1084 SC NK | 1084 SCGV | 1084 SCGV NK | 10.00 x 8.00 x 4.00 | 254 x 203 x 102 | 16 | ⓐⓓⓔⓖⓗ | ⓐⓓⓔⓖⓗ | |
| 10104 SC | 10104 SC NK | 10104 SCGV | 10104 SCGV NK | 10.00 x 10.00 x 4.00 | 254 x 254 x 102 | 16 | ⓐⓓⓔⓖⓗ | ⓐⓓⓔⓖⓗ | |
| 1264 SC | 1264 SC NK | -- | 1264 SCGV NK | 12.00 x 6.00 x 4.00 | 305 x 152 x 102 | 16 | ⓐⓓⓔⓖⓗⓈ | ⓐⓓⓔ | |
| 1284 SC | 1284 SC NK | 1284 SCGV | 1284 SCGV NK | 12.00 x 8.00 x 4.00 | 305 x 203 x 102 | 16 | ⓐⓓⓔⓖⓗⓈ | ⓐⓓⓔⓖⓗ | |
| 12104 SC | 12104 SC NK | 12104 SCGV | 12104 SCGV NK | 12.00 x 10.00 x 4.00 | 305 x 254 x 102 | 16 | ⓐⓓⓔⓖⓗⓈ | ⓐⓓⓔⓖⓗⓈ | |
| 12124 SC | 12124 SC NK | 12124 SCGV | 12124 SCGV NK | 12.00 x 12.00 x 4.00 | 305 x 305 x 102 | 16 | ⓐⓓⓔⓖⓗⓈ | ⓐⓓⓔⓖⓗⓈ | |
| -- | 15154 SC NK | 15154 SCGV | -- | 15.00 x 15.00 x 4.00 | 381 x 381 x 102 | 16 | ⓐⓓⓔⓖⓗⓈⓉ | ⓐⓓⓔⓖⓗⓈⓉ | |
| 16124 SC | 16124 SC NK | 16124 SCGV | 16124 SCGV NK | 16.00 x 12.00 x 4.00 | 406 x 305 x 102 | 16 | ⓐⓓⓔⓖⓗⓈⓉ | ⓐⓓⓔⓖⓗⓈ | |
| 16164 SC | 16164 SC NK | 16164 SCGV | -- | 16.00 x 16.00 x 4.00 | 406 x 406 x 102 | 16 | ⓐⓓⓔⓖⓗⓈⓉ | ⓐⓓⓔⓖⓗⓈⓉ | |
| 18124 SC | 18124 SC NK | 18124 SCGV | 18124 SCGV NK | 18.00 x 12.00 x 4.00 | 457 x 305 x 102 | 16 | ⓐⓓⓔⓖⓗⓈⓉⓀ | ⓐⓓⓔⓖⓗⓈ | |
| -- | 18154 SC NK | 18154 SCGV | -- | 18.00 x 15.00 x 4.00 | 457 x 381 x 102 | 16 | ⓐⓓⓔⓖⓗⓈⓉⓀ | ⓐⓓⓔⓖⓗⓈⓉ | |
| 18184 SC | 18184 SC NK | 18184 SCGV | 18184 SCGV NK | 18.00 x 18.00 x 4.00 | 457 x 457 x 102 | 16 | ⓐⓓⓔⓖⓗⓈⓉⓀ | ⓐⓓⓔⓖⓗⓈⓉⓀ | |
| 24124 SC | 24124 SC NK | 24124 SCGV | -- | 24.00 x 12.00 x 4.00 | 610 x 305 x 102 | 16 | ⓐⓓⓔⓖⓗⓈⓉⓀ | ⓐⓓⓔⓖⓗⓈ | |
| -- | 24184 SC NK | 24184 SCGV | -- | 24.00 x 18.00 x 4.00 | 610 x 457 x 102 | 16 | ⓐⓓⓔⓖⓗⓈⓉⓀ | ⓐⓓⓔⓖⓗⓈⓉⓀ | |
| 24244 SC | 24244 SC NK | 24244 SCGV | 24244 SCGV NK | 24.00 x 24.00 x 4.00 | 610 x 610 x 102 | 14 | ⓐⓓⓔⓖⓗⓈⓉⓀ | ⓐⓓⓔⓖⓗⓈⓉⓀ | |
| -- | 30184 SC NK | 30184 SCGV | 30184 SCGV NK | 30.00 x 18.00 x 4.00 | 762 x 457 x 102 | 16 | ⓐⓓⓔⓖⓗⓈⓉⓀ | ⓐⓓⓔⓖⓗⓈⓉⓀ | |
| 30244 SC | 30244 SC NK | 30244 SCGV | 30244 SCGV NK | 30.00 x 24.00 x 4.00 | 762 x 610 x 102 | 14 | ⓐⓓⓔⓖⓗⓈⓉⓀ | ⓐⓓⓔⓖⓗⓈⓉⓀ | |
| - | 30304 SC NK | - | 30304 SCGV NK | 30.00 x 30.00 x 4.00 | 762 x 762 x 102 | 12 | -- | -- | |



Conduit Sizes

Knockout Detail

Note: See table for applicable knockout pattern.

Notes: Dimensions are in inches. Millimeters shown are for reference only. Data subject to change without notice.