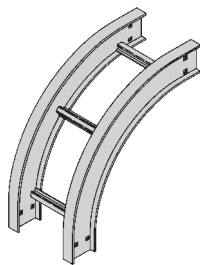


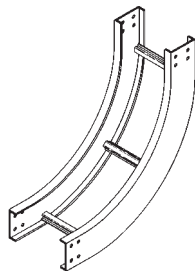
Series 2, 3, 4 & 5 - Fittings

Vertical Bend 90° (VO, VI)

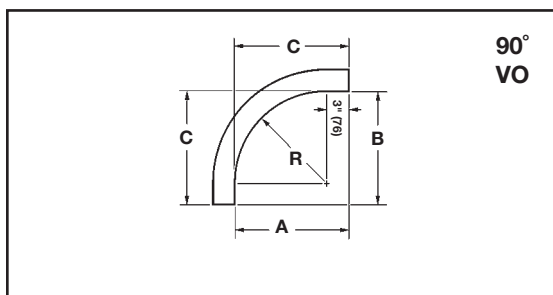
1 pair splice plates with hardware included.



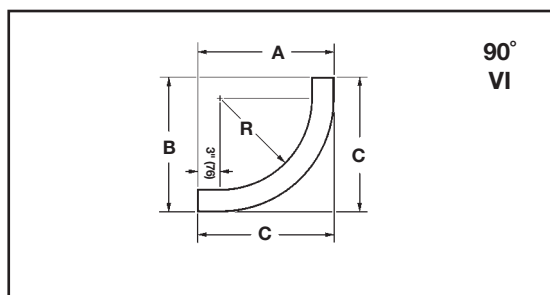
90° Vertical Outside



90° Vertical Inside



90°
VO



90°
VI

Bend Radius R	Tray Width Insert		(*) Insert "VO" for Vert. Outside Bend "VI" for Vert. Inside Bend Catalog No.	VO Side Rail Height			VI Side Rail Height											
				4" - 7"			4"			5"			6"			7"		
				A	B	C	A	B	C	A	B	C	A	B	C	A	B	C
in.	in.	mm	in.	in.	in.	in.	in.	in.	in.	in.	in.	in.	in.	in.	in.	in.		
12 (305)	6	152	(Prefix)-06-90(*)12 (Prefix)-09-90(*)12 (Prefix)-12-90(*)12 (Prefix)-18-90(*)12 (Prefix)-24-90(*)12 (Prefix)-30-90(*)12 (Prefix)-36-90(*)12 (Prefix)-42-90(*)12															
	9	228																
	12	305																
	18	457		15	15	15	19	19	19	20	20	20	21	21	21	22	22	22
	24	609		(381)	(381)	(381)	(483)	(483)	(483)	(508)	(508)	(508)	(533)	(533)	(533)	(559)	(559)	(559)
	30	762																
	36	914																
42	1067																	
24 (609)	6	152	(Prefix)-06-90(*)24 (Prefix)-09-90(*)24 (Prefix)-12-90(*)24 (Prefix)-18-90(*)24 (Prefix)-24-90(*)24 (Prefix)-30-90(*)24 (Prefix)-36-90(*)24 (Prefix)-42-90(*)24															
	9	228																
	12	305																
	18	457		27	27	27	31	31	31	32	32	32	33	33	33	34	34	34
	24	609		(686)	(686)	(686)	(787)	(787)	(787)	(813)	(813)	(813)	(838)	(838)	(838)	(864)	(864)	(864)
	30	762																
	36	914																
42	1067																	
36 (914)	6	152	(Prefix)-06-90(*)36 (Prefix)-09-90(*)36 (Prefix)-12-90(*)36 (Prefix)-18-90(*)36 (Prefix)-24-90(*)36 (Prefix)-30-90(*)36 (Prefix)-36-90(*)36 (Prefix)-42-90(*)36															
	9	228																
	12	305																
	18	457		39	39	39	43	43	43	44	44	44	45	45	45	46	46	46
	24	609		(991)	(991)	(991)	(1092)	(1092)	(1092)	(1118)	(1118)	(1118)	(1143)	(1143)	(1143)	(1168)	(1168)	(1168)
	30	762																
	36	914																
42	1067																	
48 (1219)	6	152	(Prefix)-06-90(*)48 (Prefix)-09-90(*)48 (Prefix)-12-90(*)48 (Prefix)-18-90(*)48 (Prefix)-24-90(*)48 (Prefix)-30-90(*)48 (Prefix)-36-90(*)48 (Prefix)-42-90(*)48															
	9	228																
	12	305																
	18	457		51	51	51	55	55	55	56	56	56	57	57	57	58	58	58
	24	609		(1295)	(1295)	(1295)	(1397)	(1397)	(1397)	(1422)	(1422)	(1422)	(1448)	(1448)	(1448)	(1473)	(1473)	(1473)
	30	762																
	36	914																
42	1067																	

(Prefix) See page FTS-3 for catalog number prefix.

Manufacturing tolerances apply to all dimensions.

All dimensions in parentheses are in millimeters unless otherwise specified.