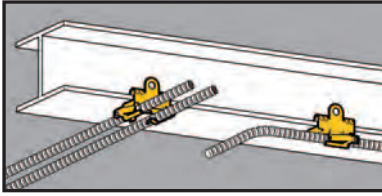


Beams



- Attaches MC, AC, sizes 14/2 through 10/3 or 3/8" FMC to flanges 1/8" to 3/4" thick.
- Fasteners will rotate 360°.

Cable To Beam Fasteners



UPC/Part Number	Catalog Number	Description	Flange Thickness	Box Qty.
781011 01197	BX4-U-2-4	Single Runs	1/8" - 1/4"	100
781011 01198	BX4-U-5-8	Single Runs	5/16" - 1/2"	100
781011 01199	BX4-U-9-12	Single Runs	9/16" - 3/4"	100



UPC/Part Number	Catalog Number	Description	Flange Thickness	Box Qty.
781011 01206	BX4M-U-2-4	Double Runs	1/8" - 1/4"	100
781011 01207	BX4M-U-5-8	Double Runs	5/16" - 1/2"	100
781011 01208	BX4M-U-9-12	Double Runs	9/16" - 3/4"	100