

DULUX® S/E

Compact Fluorescent Lamps



- Dimmable compact fluorescent lamps
- Operates on various ballast systems
 - Flicker free start on electronic ballasts
- Less power consumption than incandescent of comparable light output*
- High luminous efficacy
- Long 10,000-hour average rated life
 - Reduces relamping requirement and related cost
- Rare earth triphosphor – 82 CRI
- 2700K and 4100K color temperatures
 - 3000K available in 13 Watt lamp only

* Based on OSRAM SYLVANIA TCLP test protocol.

SYLVANIA DULUX® S/E compact fluorescent lamps are the equivalent of the DULUX® S lamps without an integrated starter and are designed to operate on electronic ballasts and dimming systems.

Small tube diameter of 1/2" makes DULUX S/E lamps ideal for creative fixture design and modern lighting systems having comparable light output.

DULUX is a registered trademark of OSRAM GmbH, Germany, used under license by OSRAM SYLVANIA Inc.

PRODUCT AVAILABILITY

Lamp Type	Watts	Rated Lumens
CF5DS/E/800	5	230
CF7DS/E/800	7	400
CF9DS/E/800	9	580
CF13DS/E/800	13	800

LAMP COMPARISON

Lamp Type	Ballast Factor	System Lumens	System Watts	System Efficacy	Energy Savings
One – 90W Incandescent	1.0	1510	90	17	—
Two – 13W DULUX S/E	0.95	1520	28	54	69%

APPLICATION INFORMATION

Applications

- Task and down lights
- Wall sconces, recessed and surface ceiling fixtures
- Exit signs, show case and outdoor lighting

Notes

- Minimum starting temperature depends on ballast used
- May be operated on electronic ballasts, dimming ballasts and preheat magnetic ballasts with external starter switch
- Equipment manufacturers are advised to consult the relevant ANSI and IEC standards for the maximum allowable dimensions and temperature to insure compatibility with similar products

ORDERING AND SPECIFICATION INFORMATION

Package Quantity = 50

Item Number	Ordering Abbreviation	NEMA Generic Designation	Base	Watts	Volts*	Amps*	Initial Lumens	Mean Lumens	Color Temp.	CRI	Av. Rated Life (hrs.)
20311	CF5DS/E/827	CFT5W/2G7/827	2G7	5	27	.190	230	207	2700K	82	10000
20315	CF5DS/E/841	CFT5W/2G7/841	2G7	5	27	.190	230	207	4100K	82	10000
20312	CF7DS/E/827	CFT7W/2G7/827	2G7	7	48	.175	400	360	2700K	82	10000
20316	CF7DS/E/841	CFT7W/2G7/841	2G7	7	48	.175	400	360	4100K	82	10000
20313	CF9DS/E/827	CFT9W/2G7/827	2G7	9	48	.170	580	522	2700K	82	10000
20317	CF9DS/E/841	CFT9W/2G7/841	2G7	9	48	.170	580	522	4100K	82	10000
20314	CF13DS/E/827	CFT13W/2GX7/827	2GX7	13	46	.170	800	720	2700K	82	10000
20284	CF13DS/E/830	CFT13W/2GX7/830	2GX7	13	46	.255	800	720	3000K	82	10000
20318	CF13DS/E/841	CFT13W/2GX7/841	2GX7	13	46	.255	800	720	4100K	82	10000

*@ 25 KHz

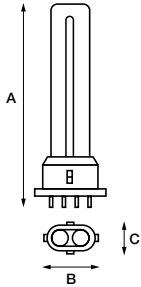
SAMPLE SPECIFICATION

Lamp(s) shall be (a) DULUX S/E (CF5DS/E, CF7DS/E, CF9DS/E or CF13DS/E) compact fluorescent lamp(s). Lamp(s) shall have a correlated color temperature of (2700K, 3000K or 4100K) and CRI of 82. Lamps shall have a 4-pin (2G7, 2GX7 base with no internal starter.

ORDERING GUIDE

CF	5	DS	/	E	/	8	27
Compact Fluorescent	Wattage: 5, 7, 9 and 13 watts	DULUX S Single		Electronic		8 = 82 CRI	27 = 2700K 30 = 3000K 35 = 3500K 41 = 4100K

DIMENSIONS

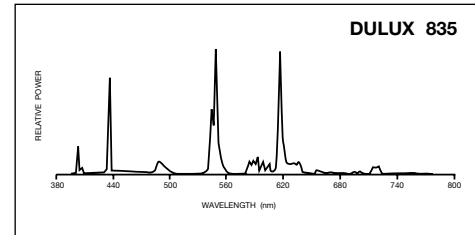
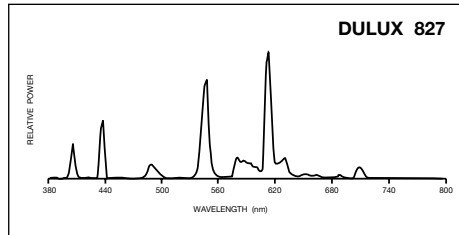
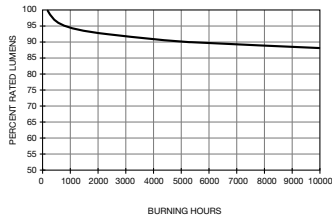


Ordering Abbreviation	(A) MOL [in (mm)]	(B) Max. Base Length [in (mm)]	(C) Max. Base Width [in (mm)]
CF5DS/E	3.35 (85)	1.50 (38)	0.83 (21.0)
CF7DS/E	4.53 (115)	1.50 (38)	0.83 (21.0)
CF9DS/E	5.71 (145)	1.50 (38)	0.83 (21.0)
CF13DS/E	6.18 (157)	1.50 (38)	0.83 (21.0)

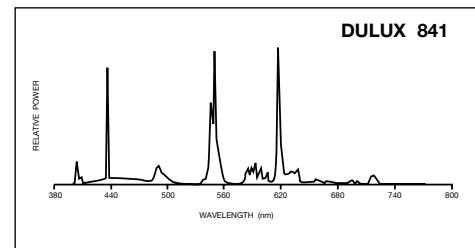
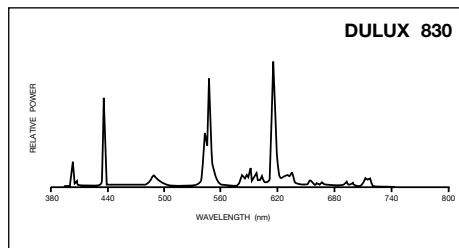
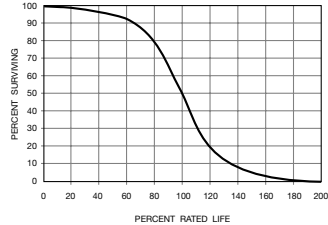
T4 Diameter Tubing = 0.5 inches (12.7mm)

TECHNICAL INFORMATION

Lumen Maintenance Curve
DULUX S, S/E, D, D/E, T & T/E



Typical Fluorescent Lamp Mortality



FOR ORDERS AND GENERAL INFORMATION

OSRAM SYLVANIA National Customer Support Center, 18725 N. Union Street, Westfield, IN 46074

Industrial & Commercial

Phone: 1-800-562-4671
Fax: 1-800-255-5043

National Accounts

Phone: 1-800-762-7191
Fax: 1-800-562-4674

Special Markets

Phone: 1-800-762-7191
Fax: 1-800-762-7192

In Canada: OSRAM SYLVANIA LTD. Headquarters, 2001 Drew Road, Mississauga, ON L5S 1S4

Industrial & Commercial

Phone: 1-800-263-2852
Fax: 1-800-667-6772

Special Markets

Phone: 1-800-265-2852
Fax: 1-800-667-6772

