

## Stainless Steel Floor Flanges

### Features:

- Manufactured in type 316 stainless steel to meet any stringent sanitary condition
- Polished with standard "brite" finish to increase corrosion resistance and aesthetic appearance
- No package qty. required

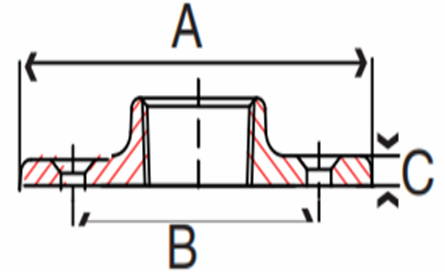
### Applications:

- To secure stainless conduit to the wall or floor



### Industries Commonly Served:

- Food & Beverage Production & Distribution
- Chemical Plants
- Water & Wastewater Treatment
- Pharmaceuticals & Cosmetics
- Refining & Extraction Sites
- Petrochemical
- Pulp & Paper Mills
- Marine & Coastal Facilities
- Along with other corrosive environments



Size	Part Number	A	B	C	Mtg Hole Dimension	Weight (ea) per lb.
1/2"	S60500FF00	3.000"	2.100"	0.360"	0.264"	0.90
3/4"	S60700FF00	3.400"	2.400"	0.400"	0.264"	1.05
1"	S61000FF00	3.930"	2.800"	0.400"	0.264"	1.40
1-1/4"	S61200FF00	4.200"	3.200"	0.400"	0.264"	1.60
1-1/2"	S61500FF00	4.600"	3.450"	0.440"	0.319"	2.00
2"	S62000FF00	5.200"	4.000"	0.440"	0.319"	2.50

All dimensions are for informational purposes only \*Tolerances +/-5%