

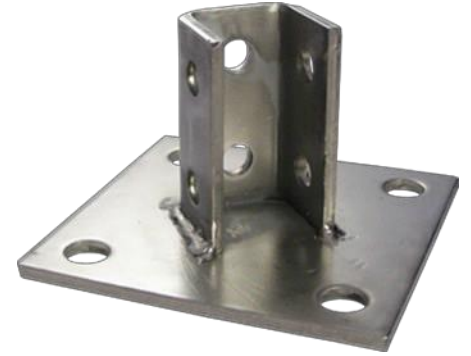
Calbrite™

Stainless Steel Conduit Systems

Stainless Steel Post Base

Features:

- Manufactured in both type 304 & 316 stainless to meet any stringent sanitary condition
- Polished to a bright, easily maintainable finish that is modern, attractive, easy to clean, and that also enhances the surface's resistance to pitting & bacterial corrosion
- Fits 1-5/8" Channel
- Calbrite stainless steel strut, fittings functions in exactly the same way as any other metallic strut.

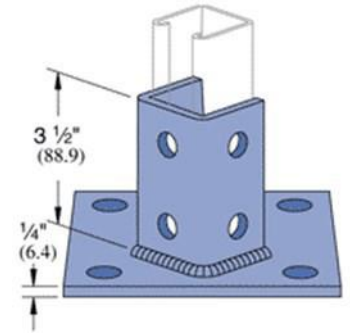


Certifications and Compliances:

Manufactured in the United States, and is fabricated to UL, ASTM standards, and NEC code compliance.

Applications:

The Calbrite system of metal framing is based on the use of a continuous solid & slotted channel, and a series of brackets and fittings, which can be fastened to it any point. With Calbrite channel and components, racks, supports for conduit, wiring, and electrical equipment, machine frames, and a limitless variety of structures can be built rapidly, simply, and economically.



Industries Commonly Served:

- Food & Beverage Production & Distribution
- Chemical Plants
- Water & Wastewater Treatment
- Pharmaceuticals & Cosmetics
- Refining & Extraction Sites
- Petrochemical Operations
- Marine & Coastal Facilities
- Pulp and Paper Mills
- Along with other corrosive environments

Type 304 Part Number	Type 316 Part Number	Length	Width	Height	Base Plate Holes	Thickness	Weight Per EA
S45800PB00	S65800PB00	6.000"	6.000"	3.750"	3/4"	1/4"	3.27 lbs.

*All dimensions are for informational purposes only *Tolerances +/-5%*