

TYPES K3A-U, KK3A-U

UNIVERSAL TERMINAL

(Three Conductor)
For Aluminum and Copper Conductors

Dual-rated three-conductor lugs are constructed from high strength aluminum alloy and electro tinned to provide low contact resistance.



AL9CU

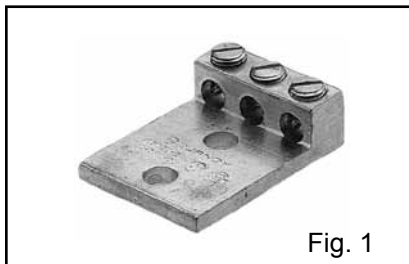


Fig. 1

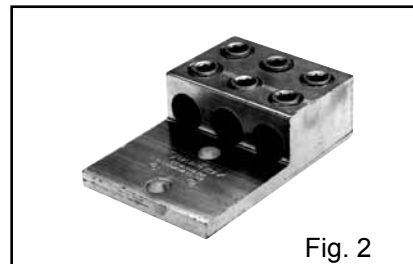


Fig. 2

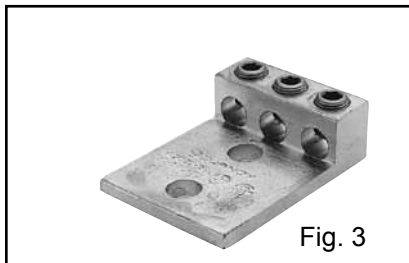


Fig. 3



Fig. 4

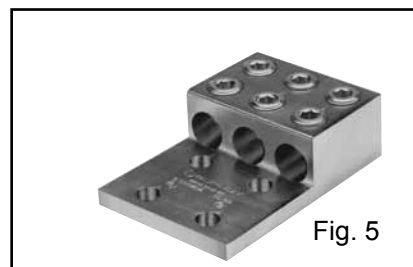
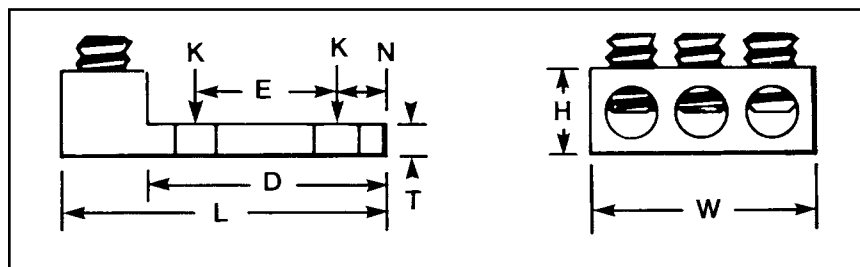


Fig. 5

| Catalog Number** | Fig. No. | THREE: Wire Range (Aluminum or Copper) | K | Stud Hole Size | Dimensions | | | | | | | Rec. Tightening ▲ Torque (in-lb) |
|-------------------|----------|--|-------|----------------|------------|------|------|------|------|------|------|----------------------------------|
| | | | | | D | L | N | W | E | T | H | |
| K3A2U-2* | 1 | 14 AWG-2 AWG | 11/32 | 5/16 | 1.63 | 2.19 | 0.34 | 1.59 | 0.88 | 0.19 | 0.62 | 50 |
| K3A25U-2* | 1 | 14 AWG-1/0 | 7/16 | 3/8 | 2.09 | 2.91 | 0.34 | 1.94 | 1.00 | 0.25 | 0.88 | 50 |
| K3A26U-2N | 3 | 14 AWG-2/0 AWG | 9/16 | 1/2 | 3.06 | 3.75 | 0.63 | 1.95 | 1.75 | 0.19 | 1.79 | 50 |
| K3A27U-2N | 3 | 6 AWG-3/0 AWG | 9/16 | 1/2 | 3.00 | 3.88 | 0.63 | 2.81 | 1.75 | 0.31 | 1.12 | 275 |
| K3A29U-2N | 3 | 6 AWG-250 kcmil | 9/16 | 1/2 | 3.16 | 4.00 | 0.63 | 2.81 | 1.75 | 0.31 | 1.19 | 275 |
| K3A31U-2N | 3 | 6 AWG-350 kcmil | 9/16 | 1/2 | 3.16 | 4.31 | 0.63 | 3.52 | 1.75 | 0.31 | 1.38 | 275 |
| K3A36U-2N | 3 | 2 AWG-600 kcmil | 9/16 | 1/2 | 3.22 | 4.69 | 0.63 | 3.63 | 1.75 | 0.44 | 1.56 | 375 |
| KK3A36U-2N | 2 | 2 AWG-600 kcmil | 9/16 | 1/2 | 3.00 | 5.50 | 0.63 | 4.22 | 1.75 | 0.38 | 1.52 | 375 |
| KK3A40U-2N | 2 | 300 kcmil-800 kcmil | 9/16 | 1/2 | 3.34 | 6.19 | 0.63 | 4.81 | 1.75 | 0.56 | 1.89 | 375 |
| KK3A44U-2N | 2 | 500 kcmil-1000 kcmil | 9/16 | 1/2 | 3.34 | 6.19 | 0.63 | 4.75 | 1.75 | 0.56 | 1.90 | 500 |
| K3A2U-4* | 4 | 14 AWG-2 AWG | 11/32 | 5/16 | 1.63 | 2.19 | 0.34 | 1.59 | 0.88 | 0.19 | 0.62 | 50 |
| K3A25U-4* | 4 | 14 AWG-1/0 | 7/16 | 3/8 | 2.09 | 2.91 | 0.34 | 1.94 | 1.00 | 0.25 | 0.88 | 50 |
| K3A27U-4N | 4 | 6 AWG-3/0 AWG | 9/16 | 1/2 | 3.00 | 3.88 | 0.63 | 2.81 | 1.75 | 0.31 | 1.12 | 275 |
| K3A29U-4N | 4 | 6 AWG-250 kcmil | 9/16 | 1/2 | 3.00 | 4.00 | 0.63 | 2.81 | 1.75 | 0.31 | 1.19 | 275 |
| K3A31U-4N | 4 | 6 AWG-350 kcmil | 9/16 | 1/2 | 3.00 | 4.31 | 0.63 | 3.00 | 1.75 | 0.31 | 1.38 | 275 |
| K3A36U-4N | 4 | 2 AWG-600 kcmil | 9/16 | 1/2 | 3.22 | 4.69 | 0.63 | 3.63 | 1.75 | 0.44 | 1.56 | 375 |
| K3A40U-4N | 4 | 300 kcmil-800 kcmil | 9/16 | 1/2 | 3.03 | 4.75 | 0.63 | 4.81 | 1.75 | 0.50 | 1.94 | 375 |
| KK3A36U-4N | 5 | 2 AWG-600 kcmil | 9/16 | 1/2 | 3.00 | 5.50 | 0.63 | 4.22 | 1.75 | 0.38 | 1.52 | 375 |
| KK3A40U-4N | 5 | 300 kcmil-800 kcmil | 9/16 | 1/2 | 3.34 | 6.19 | 0.63 | 5.34 | 1.75 | 0.56 | 1.89 | 500 |
| KK3A44U-4N | 5 | 500 kcmil-1000 kcmil | 9/16 | 1/2 | 3.34 | 6.19 | 0.63 | 4.75 | 1.75 | 0.56 | 1.90 | 500 |

* Slotted screw.

** "N" indicates NEMA standard stud holes.

▲ Listed torque values are for maximum conductor sizes accommodated. Consult UL486 Tables 7-4, 7-5, 7-6 for smaller conductor sizes.

✓ All 4N items see note LIGHTNING PROTECTION INFO.

Blue highlighted items are industry standard and most frequently ordered.