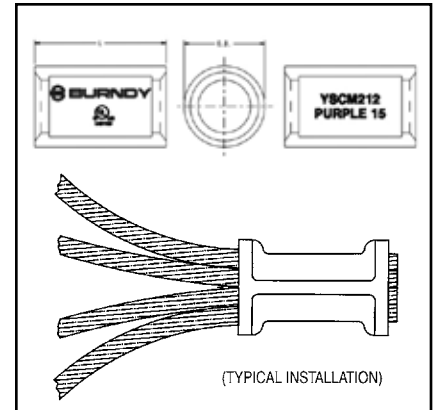
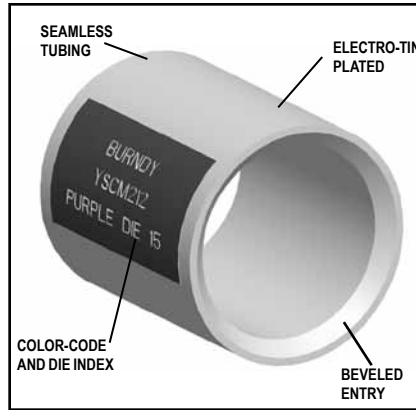


TYPE YSCM

HYLINK™

Color-Coded
Uninsulated Parallel Splice

Type YSCM HYLINK™ seamless parallel splice connectors permit stranded wires to be laid parallel inside the connector and spliced together with BURNDY® compression tools. Each YSCM connector accommodates a wide range of conductors and is color-coded to ensure proper tool and die match. YSCM connectors are cULus Listed Wire Connectors per UL 486A/B.



B-57

Additionally, they are cULus Listed for Grounding and Bonding per UL 467 and rated for direct burial in Earth and Concrete.



| Catalog Number | Conductor Range Cable† | | Dimensions Inches [mm] | | Color Code | Die Index | Recommended Installation Tooling | | Wire Strip‡ Length |
|----------------|------------------------|---------|------------------------|-----------|------------|-----------|------------------------------------|--------------------------|--------------------|
| | Circular Mils | | L ±.03 | O.D. ±.01 | | | OUR840, Y500CTHS, PAT60018V Series | Y35, Y750, PAT750 Series | |
| | Min. | Max. | | | | | | | |
| YSCM17 | 13,060 | 16,910 | 0.5 [13] | 0.27 [7] | Red | 49 | X8CRT, W8CRT | U8CRT | 11/16 |
| YSCM27 | 16,910 | 26,890 | 0.5 [13] | 0.31 [8] | Blue | 7 | X5CRT, W5CRT | U5CRT | 11/16 |
| YSCM42 | 29,970 | 41,520 | 0.5 [13] | 0.38 [10] | Gray | 8 | X4CRT, W4CRT | U4CRT | 11/16 |
| YSCM66 | 42,750 | 66,040 | 0.62 [16] | 0.47 [12] | Brown | 10 | X2CRT, W2CRT | U2CRT | 3/4 |
| YSCM80 | 67,980 | 80,020 | 0.62 [16] | 0.52 [13] | Green | 11 | X1CRT-1, W1CRT-1 | U1CRT-1 | 3/4 |
| YSCM104 | 82,870 | 103,630 | 0.69 [18] | 0.57 [14] | Pink | 12 | X25RT, W25RT | U25RT | 15/16 |
| YSCM133 | 104,960 | 133,220 | 0.81 [21] | 0.64 [16] | Black | 13 | X26RT, W26RT | U26RT | 1-1/16 |
| YSCM167 | 134,340 | 166,560 | 0.81 [21] | 0.7 [18] | Orange | 14 | X27RT, W27RT | U27RT | 1-1/16 |
| YSCM212 | 167,380 | 211,820 | 0.88 [22] | 0.78 [20] | Purple | 15 | X28RT, W28RT | U28RT | 1-1/16 |
| YSCM231 | 230,800 | 230,800 | 1.05 [27] | 0.8 [21] | Yellow | 16 | X29RT, W29RT, * | U29RT | 1-1/16 |

Notes:
Material: Copper per ASTM B75.
Finish: Tin plated. For nickel plating, add suffix "NK" to the Catalog Number.
Dimensions in brackets [] are in millimeters rounded off to the nearest millimeter, unless otherwise noted, and are for reference only.
†Recommended strip length. Strip length dependent on size, no. of wires and insulation thickness.
‡Refer to Circular Mil Table per ASTM B8 for total Class B Circular Mil calculations.
*YSCM231 can also be installed with MY29-3 and retain Listings.

Add the circular mils of the wires you wish to splice; that sum would be used to determine the correct splice using the Min/Max columns on the table above.

The tables to the right are for reference only.

| Size | | ASTM Strandings | |
|---------------|-----|-----------------|---------------------|
| Circular Mils | AWG | Class | Cable Diameter (in) |
| 1,022 | 20 | B | 0.036 |
| 1,624 | 18 | B | 0.045 |
| 2,583 | 16 | B | 0.057 |
| 4,107 | 14 | B | 0.072 |
| 6,530 | 12 | B | 0.091 |
| 10,380 | 10 | B | 0.116 |
| 13,090 | 9 | B | 0.130 |
| 16,510 | 8 | B | 0.146 |
| 20,820 | 7 | B | 0.164 |
| 26,250 | 6 | B | 0.184 |
| 33,100 | 5 | B | 0.206 |
| 41,740 | 4 | AA | 0.254 |
| 41,740 | 4 | B & A | 0.232 |
| 52,630 | 3 | AA | 0.285 |
| 52,630 | 3 | B & A | 0.260 |

| Size | | ASTM Strandings | |
|---------------|-----|-----------------|---------------------|
| Circular Mils | AWG | Class | Cable Diameter (in) |
| 66,370 | 2 | AA | 0.320 |
| 66,370 | 2 | B & A | 0.292 |
| 83,690 | 1 | AA | 0.360 |
| 83,690 | 1 | A | 0.328 |
| 83,690 | 1 | B | 0.332 |
| 105,500 | 1/0 | A & A | 0.368 |
| 105,500 | 1/0 | - | 0.390 |
| 105,500 | 1/0 | B | 0.373 |
| 133,100 | 2/0 | A & A | 0.414 |
| 133,100 | 2/0 | - | 0.438 |
| 133,100 | 2/0 | B | 0.419 |
| 167,800 | 3/0 | A & A | 0.464 |
| 167,800 | 3/0 | - | 0.492 |
| 167,800 | 3/0 | B | 0.470 |
| 211,600 | 4/0 | A & A | 0.522 |
| 211,600 | 4/0 | - | 0.522 |
| 211,600 | 4/0 | B | 0.528 |

Blue highlighted items are industry standard and most frequently ordered.

TYPES YBA, YBA-FX and YBAV-FX

HYLUG™

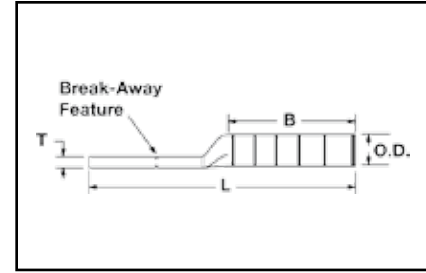
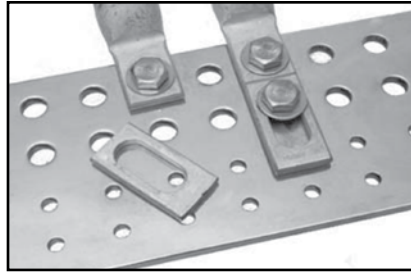
C-14

Copper and Aluminum Compression Terminals

UL Listed 90° C, 600 Volts to 35 kV

The Break-Away HYLUG™ line of Copper and Aluminum terminals are designed to provide maximum field flexibility by allowing the installer (using the Break-Away feature) to easily convert two-hole terminals to one-hole terminals to suit the application.

The Break-Away HYLUG™ line of terminals encompasses a wide range of features that affords the installer the flexibility in meeting the requirements for challenging projects.



Features & Benefits

- Break-Away feature allows for field modification of the terminal from a two-hole design to a one-hole design while retaining UL Listing and CSA Certification
- Field modification of the terminal does not require specialized tooling or training
- Stud size is 1/2" (12mm²) on the first stud as well as the slotted second stud
- Slotted second stud provides built in flexibility for the terminal to conform to various bus bar dimensions. With the slotted second stud the terminal can be used on two-hole spacing
- ranging from 1.00 to 1.75 for 1/2 stud hole sizes and 0.63 to 1.00 for 1/4 stud hole size
- Narrow tongue design allows for the terminal to fit into tight spaces
- Accommodates a wide range of conductor combinations (AWG, Compact, DLO, Flex and Metric)
- Break-Away HYLUG™ line of terminals can be installed with standard BURNDY® tooling such as PAT750XT-18V and U-Dies
- Terminals are range taking when installed with Y644HSXT or PAT644XT-18V tooling platforms

Copper Conductor

| Catalog Number | Conductor Size | mm ² | Dimensions | | | | | | Installation Tooling (# of Crimps) | | | | | |
|----------------|----------------------------|-----------------|-------------------|---------------------|--------------|-------|-------|-------|--|--------------------------------------|--------------------------------------|--|------------|-----------|
| | | | Stud Hole Spacing | Stud Hole Size [MM] | Tongue Width | B | T | L | Dieless | MD6, MD7, MD7-34R platforms OUR840** | Y500CTHS, PAT60018V, PATMD6 platform | Y35, Y39, Y750, *Y46, PAT750, *PAT46 platforms | Color Code | Die Index |
| YBAV25FX14 | 1/0 Flex (275/24); 1/0 AWG | 50 | 0.63" to 1.08" | 1/4" [6] | 0.73" | 1.50" | 0.13" | 3.69" | MY29 (MY29 platform tools can only be used on Code Conductor), PAT644XT-18V & Y644 platforms (1) 4-POINT® Y81KFT, PAT81KFT, Y4PC, PAT4PC platforms (2) | W25VT (4) X25RT (4) W25RT (4) | W25VT (4) X25RT (4) W25RT (4) | U25RT (2) | Pink | 12 or 348 |
| YBAV26FX14 | 2/0 Flex (325/24); 2/0 AWG | 70 | 0.63" to 1.08" | 1/4" [6] | 0.89" | 1.50" | 0.13" | 3.74" | | W26VT (4) X26RT (4) W26RT (4) | W26VT (4) X26RT (4) W26RT (4) | U26RT (2) | Black | 13 |
| YBAV27FX14 | 3/0 Flex (450/24); 3/0 AWG | 95 | 0.63" to 1.08" | 1/4" [6] | 0.87" | 1.50" | 0.14" | 3.78" | | W27VT (4) X27RT (4) W27RT (4) | W27VT (4) X27RT (4) W27RT (4) | U27RT (4) | Orange | 14 |
| YBAV28FX | 4/0 Flex (550/24); 4/0 AWG | 120 | 1" to 1.75" | 1/2" [12] | 0.94" | 1.62" | 0.14" | 5.24" | | X28RT (6) W28RT (4) W28VT (4) | X28RT (6) W28RT (4) W28VT (4) | U28RT (2) | Purple | 15 |
| YBA29 | 250 kcmil (Class A & B) | — | 1" to 1.75" | 1/2" [12] | 0.96" | 1.62" | 0.16" | 5.21" | PAT644XT-18V & Y644 platforms (1), 4-POINT® Y81KFT, PAT81KFT, Y4PC, PAT4PC platforms (2) for YBA29, (3) for YBA31FX & YBA32FX (4) for YBA34FX | W29RT (4) W29VT (4) | W29RT (4) W29VT (4) | U29RT (2) | Yellow | 16 |
| YBA31FX | 250 kcmil (Class I;K & M) | 150 | 1" to 1.75" | 1/2" [12] | 0.96" | 2.00" | 0.18" | 5.68" | | W30VT(4) W30RT(4) | W30VT (4) W30RT (4) | U30RT (4) | White | 17 or 298 |
| YBA32FX | 313.1 kcmil Flex (775/24) | 185 | 1" to 1.75" | 1/2" [12] | 0.96" | 2.12" | 0.19" | 5.85" | | W31VT (4) W31RT (4) | W31VT (4) W31RT (4) | U31RT (4) | Red | 18 or 324 |
| YBA34FX | 373.7 kcmil Flex (775/24) | 240 | 1" to 1.75" | 1/2" [12] | 0.96" | 2.25" | 0.23" | 6.08" | | W32VT (4) W32RT (4) | W32VT (4) W32RT (4) | U32RT (4) | Blue | 19 or 470 |

* Y46 and PAT46 platforms require PUADP-1 adaptor to use U dies

** OUR840 can use X-style dies only

Blue highlighted items are industry standard and most frequently ordered.

TYPES YBA-A

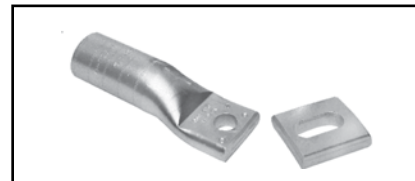
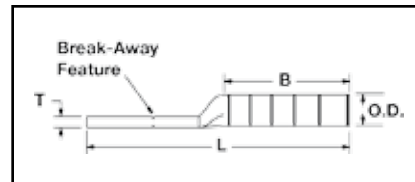
BREAK-AWAY HYLUG™

Copper and Aluminum
Compression Terminals

UL Listed 90° C,
600 Volts to 35 kV

The Break-Away HYLUG™ line of Copper and Aluminum terminals are designed to provide maximum field flexibility by allowing the installer (using the break-away feature) to easily convert a two-hole terminal into a one-hole terminal to suit the application.

The Break-Away HYLUG™ line of terminals encompasses a wide range of features that offers the installer the flexibility to meet the requirements of challenging projects.



Features & Benefits

- Break-Away feature allows for field modification of the terminal from a two-hole design to a one-hole design while retaining UL Listing and CSA Certification
- Field modification of the terminal does not require specialized tooling or training
- Stud size is 1/2" on the first stud as well as the slotted second stud
- Narrow tongue design allows for the terminal to fit into tight spaces
- Slotted second stud provides built in flexibility for the terminal to conform to various bus bar dimensions. With the slotted second stud the terminal can be used on two-hole spacing ranging from 1.75" down to 1.00" for 1/2" stud size
- Break-Away HYLUG™ line of terminals can be installed with standard BURNDY® tooling such as PAT750XT-18V and U-Dies
- Terminals are range taking when installed with Y644 or PAT644XT-18V tooling platforms

Aluminum Conductor

| Catalog Number | Conductor Size (Concentric and Compact) | Dimensions | | | | | | Installation Tooling (# of crimps) | | | | | |
|----------------|---|-------------------|----------------|--------------|-------|-------|-------|--|--------------------------------------|--------------------------------------|--|------------|-----------|
| | | Stud Hole Spacing | Stud Hole Size | Tongue Width | B | T | L | Dieless | MD6, MD7, MD7-34R platforms OUR840** | Y500CTHS, PAT60018V, PATMD6 platform | Y35, Y39, Y750, *Y46, PAT750, *PAT46 platforms | Color Code | Die Index |
| YBA25A | 1/0 | 1" to 1.75" | 1/2" [12] | 1.03" | 1.05" | 0.17" | 4.59" | MY29 (MY29 platform tools can only be used on Code Conductor), PAT644XT-18V & Y644 platforms (1), 4-POINT® | W241 (2) X241 (4) | W241 (2) | U25ART (1) | Tan | 296 |
| YBA26A | 2/0 | 1" to 1.75" | 1/2" [12] | 1.03" | 1.17" | 0.20" | 4.78" | | — | — | U26ART (2) | Olive | 297 |
| YBA27A | 3/0 | 1" to 1.75" | 1/2" [12] | 1.04" | 1.31" | 0.26" | 5.02" | | — | — | U27ART (2) | Ruby | 467 |
| YBA28A | 4/0 | 1" to 1.75" | 1/2" [12] | 1.17" | 1.39" | 0.30" | 5.19" | Y81KFT, PAT81KFT, Y4PC, PAT4PC platforms (2) | W660 (4) X660 (8) | W660 (4) | U28ART (2) | White | 298 |
| YBA29A | 250 kcmil | 1" to 1.75" | 1/2" [12] | 1.26" | 1.45" | 0.33" | 5.28" | PAT644XT-18V & Y644 platforms (1), 4-POINT® Y81KFT, PAT81KFT, Y4PC, PAT4PC platforms (2) | — | — | U29ART (2) | Red | 324 |
| YBA30A | 300 kcmil | 1" to 1.75" | 1/2" [12] | 1.38" | 1.53" | 0.36" | 5.64" | — | — | U30ART (2) | Blue | 470 | |
| YBA31A | 350 kcmil | 1" to 1.75" | 1/2" [12] | 1.52" | 1.85" | 0.39" | 6.07" | PAT644XT-18V & Y644 platforms (1), 4-POINT® Y81KFT, PAT81KFT, Y4PC, PAT4PC platforms (4) | — | — | U31ART (2) | Brown | 299 |
| YBA32A | 400 kcmil | 1" to 1.75" | 1/2" [12] | 1.62" | 2.26" | 0.43" | 6.15" | | — | — | U32ART (4) | Green | 472 |
| YBA34A | 500 kcmil | 1" to 1.75" | 1/2" [12] | 1.62" | 2.34" | 0.46" | 6.80" | | — | — | U34ART (4) | Pink | 300 |
| YBA36A | 600 kcmil | 1" to 1.75" | 1/2" [12] | 1.31" | 2.47" | 0.52" | 7.09" | | — | — | U36ART (4) | Black | 473 |
| YBA39A | 700 & 750 kcmil | 1" to 1.75" | 1/2" [12] | 1.62" | 2.46" | 0.43" | 7.07" | | — | — | U39ART-2 (2) | Yellow | 936 |
| YBA42A | 600 - 900 kcmil | 1" to 1.75" | 1/2" [12] | 1.62" | 2.46" | 0.39" | 7.15" | — | — | U42ART (4)^ | Gray | 303 | |
| YBA44A | 1000 kcmil | 1" to 1.75" | 1/2" [12] | 1.65" | 2.74" | 0.55" | 7.76" | Y644HSXTBH (1) | — | — | P44ART† (4) | Brown | 302 |

† Can only be crimped with PAT46 or Y46 platform tools using the P44ART die

* Y46 and PAT46 platforms require PUADP-1 adaptor to use U dies

** OUR840 can use X-style dies only
^ U die for 900 AL only

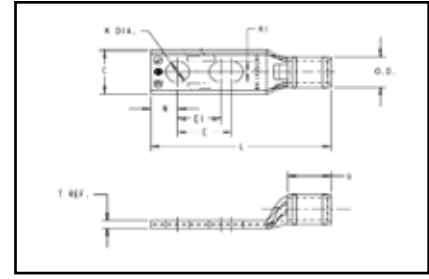
Blue highlighted items are industry standard and most frequently ordered.

Compression Connections

BURNDY®

Copper Compression — Slotted — Standard Barrel — Code/Flex

TWO HOLE SLOTTED HYLUG™ STANDARD BARREL



C-80

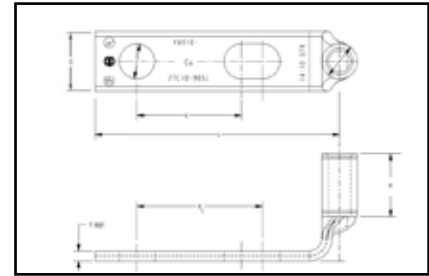
TYPES YA-L2TC-SL AND YAV-L2TC-FXSL

COPPER COMPRESSION TERMINAL



UL Listed 90° C,
600 Volts to 35 kV

Features & Benefits



Compression Slotted Lugs connect copper or tinned copper conductors to bus bars, CPI Racks, Cabinets or Cable Runway. Slotted and 90° Slotted lugs have one round and one oblong hole to match hole spacing on equipment mounting rails on CPI Racks and Cabinets and on most bus bars.

- Slotted stud provides built in flexibility for the terminal to conform to spacing requirements
- Accommodates a wide range of conductor combinations (AWG, Compact, DLO, Flex and Metric).

| Catalog Number | Cond. Size | Stud Hole Size | Tongue Width | Dimensions (Inch) | | | | | Installation Tooling (# of crimps) | | | | | Wire Strip Length | |
|--------------------|----------------------------|----------------|--------------|-------------------|-------|-------|-------|-------|---|---|-------------------------------------|-------------------------------------|------------|-------------------|-----------|
| | | | | B | T | L | E | E1 | Dieless | Mechanical MD6, OUR840, MD7-34R | Hydraulic | | Color Code | | Die Index |
| | | | | | | | | | | | PATMD6, Y500THS PAT60018V | Y35, Y39, Y750 Y46, PAT750 | | | |
| YA6CL2TC14E2SL | #6 AWG | 1/4" | 0.45" | 0.81" | 0.08" | 2.47" | 0.62" | 0.75" | Y1MRTC (1) MY29-3 (1) MY29-11 (1) Y644HSXT-18V (1) PAT644XT-18V (1) | W5CVT (1) W5CRT (1) X5CRT (1) X8CART (1) | W5CVT (1) W5CRT (1) | U5CRT (1) U8CABT (1) | Blue | 7 or 374 | 7/8" |
| YAV6CL2TC10FX90SL* | 61/24 #6 WELD #6 AWG | #10 | 0.48" | 0.50" | 0.08" | 1.54" | 0.62" | 0.75" | Y1MRTC (1) MY29-3 (1) MY29-11 (1) Y644HSXT-18V (1) PAT644XT-18V (1) | W5CVT (1) W5CRT (1) X5CRT (1) X8CART (1) | W5CVT (1) W5CRT (1) | U5CRT (1) U8CABT (1) | Blue | 7 or 374 | 1/2" |
| YAV4CL2TC14FXSL | #4 AWG | 1/4" | 0.55" | 0.50" | 0.09" | 2.08" | 0.50" | 0.62" | Y1MRTC (2) MY29-11 (1) Y644HSXT-18V (1) | W4CVT (1) W4CRT (1) X4CRT (1) | W4CVT (1) W4CRT (1) X4CRT (1) | U4CRT (1) | Gray | 8 | 9/16" |
| YAV4CL2TC38FXSL | | 3/8" | 0.58" | 0.50" | 0.08" | 2.68" | 0.75" | 1.00" | | W2CVT (1) W2CRT (1) X2CRT (1) | W2CVT (1) W2CRT (1) X2CRT (1) | U2CRT (1) | Brown | 10 | 11/16" |
| YAV2CL2TC14FXSL | #2 AWG | 1/4" | 0.68" | 0.62" | 0.10" | 2.26" | 0.50" | 0.62" | PAT644XT-18V (1) | W2CVT (1) W2CRT (1) X2CRT (1) | W2CVT (1) W2CRT (1) X2CRT (1) | U2CRT (1) | Brown | 10 | 11/16" |
| YAV2CL2TC38FXSL | | 3/8" | 0.68" | 0.62" | 0.10" | 2.82" | 0.75" | 1.00" | | — | — | U44XRT (2) | Yellow | L115 | 1-2/3" |
| YA44L2NNTFXSL | 750 kcmil | 5/8" | 1.63" | 1.65" | 0.33" | 5.74" | 1.58" | 1.75" | Y81KFT (2) Y1MRTC (2) Y644HSXT-18V (1) PAT81KFT-18V (2) | — | — | U44XRT (2) | Yellow | L115 | 1-2/3" |

* Denotes 90° Angle

Note: All dimensions shown are for reference only.

Blue highlighted items are industry standard and most frequently ordered.

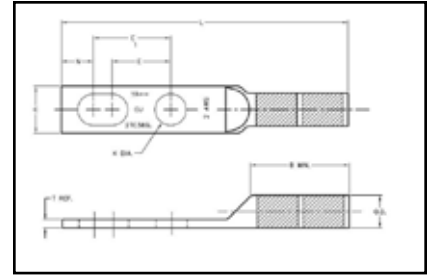
**TWO HOLE SLOTTED
HYLUG™ LONG BARREL
WITH INSPECTION
WINDOW**

**TYPES YAV-2TC-SL AND
YAZV-2TC-FXSL**

**COPPER COMPRESSION
TERMINAL**

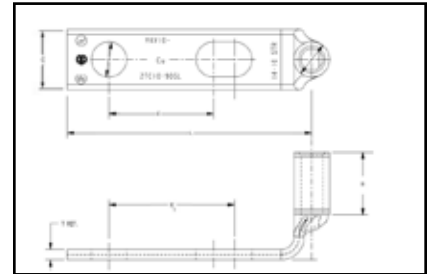
UL Listed 90° C,
600 Volts to 35 kV

Compression Slotted Lugs connect copper or tinned copper conductors to bus bars, CPI Racks, Cabinets or Cable Runway. Slotted and 90° Slotted lugs have one round and one oblong hole to match hole spacing on equipment mounting rails on CPI Racks and Cabinets and on most bus bars.



Features & Benefits

- Slotted stud provides built in flexibility for the terminal to conform to various space requirements.
- Accommodates a wide range of conductor combinations (AWG, Compact, DLO, Flex and Metric).



| Catalog Number | Cond. Size | Stud Hole Size | Tongue Width | Dimensions | | | | | Installation Tooling (# of crimps) | | | | | | Wire Strip Length |
|-----------------------|---------------|----------------|--------------|------------|-------|-------|-------|-------|--|-------------------------------------|-------------------------------------|-------------------------------------|------------|-----------|-------------------|
| | | | | B | T | L | E | E1 | Dieless | Mech. MD6, OUR840, MD7-34R | Hydraulic | | Color Code | Die Index | |
| | | | | | | | | | | | PATMD6, Y500CTHS PAT60018V | Y35, Y39, Y750 Y46, PAT750 | | | |
| YAV102TC1090SL | #14 - #10 AWG | #10 | 0.36" | 0.38" | 0.06" | 1.46" | 0.63" | 0.75" | Y8MRB-1 (1) | — | — | — | — | — | 7/16" |
| YAZV102TC14SL | | 1/4" | 0.41" | 0.69" | 0.05" | 2.28" | 0.62" | 0.75" | | | | | | | 3/4" |
| YAZV6C2TC10FX90SL* | #6 AWG | #10 | 0.48" | 0.75" | 0.08" | 1.50" | 0.75" | 1.00" | Y1MRTC (2) Y8MRB-1 (2) MY29-3 (1) MY29-11 (2) MRC840 (2) Y81KFT (1) Y81KFTMBH (1) PAT81KFT-18V (1) | W5CVT (2) W5CRT (2) | W5CVT (2) W5CRT (2) | U5CRT (2) | Blue | 7 or 374 | 1-3/16" |
| YAZV6C2TC14FXSLBOX500 | | 1/4 | 0.58" | 1.12" | 0.08" | 3.22" | 0.63" | 1.00" | | | | | | | |
| YAZV6C2TC14FXSL | | 1/4 | 0.58" | 1.12" | 0.08" | 3.22" | 0.63" | 1.00" | | | | | | | |
| YAZV6C2TC38FXSLBOX500 | | 3/8" | 0.58" | 1.12" | 0.08" | 3.22" | 0.63" | 1.00" | | | | | | | |
| YAZV6C2TC38FXSL | | 3/8" | 0.58" | 1.12" | 0.08" | 3.22" | 0.63" | 1.00" | | | | | | | |
| YAZV4C2TC14FXSL | #4 AWG | 1/4" | 0.55" | 1.25" | 0.09" | 2.95" | 0.63" | 1.00" | Y1MRTC (4) MY29-3 (2) MY29-11 (2) MRC840 (2) Y644HSXT (2) Y81KFT (1) Y81KFTMBH (1) PAT81KFT-18V (1) | W4CVT (2) W4CRT (2) X4CRT (2) | W4CVT (2) W4CRT (2) X4CRT (2) | U4CRT (2) | Gray | 8 or 346 | 1-5/16" |
| YAZV4C2TC14FXSLBOX500 | | 1/4" | 0.55" | 1.25" | 0.09" | 2.95" | 0.63" | 1.00" | | | | | | | |
| YAZV4C2TC38FXSL | | 3/8" | 0.55" | 1.25" | 0.09" | 2.95" | 0.63" | 1.00" | | | | | | | |
| YAZV4C2TC38FXSLBOX500 | | 3/8" | 0.55" | 1.25" | 0.09" | 2.95" | 0.63" | 1.00" | | | | | | | |

* Denotes 90° Angle
Note: All dimensions shown are for reference only.

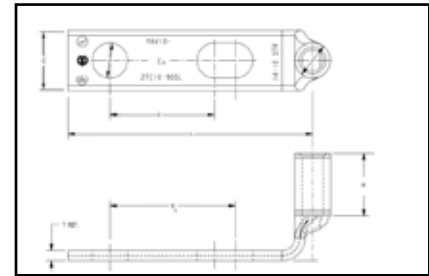
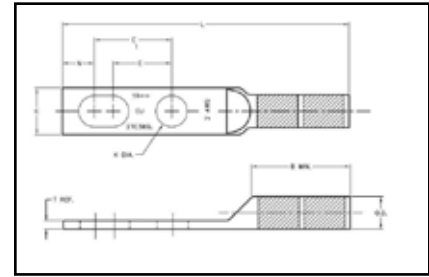
Blue highlighted items are industry standard and most frequently ordered.

Compression Connections

Copper Compression — Slotted — Long Barrel — Flex

BURNDY®

TWO HOLE SLOTTED HYLUG™ LONG BARREL WITH INSPECTION WINDOW



C-84

TYPES YAZ-2TC-SL AND YAZV-2TC-SL (Continued)



| Catalog Number | Cond. Size | Stud Hole Size | Tongue Width | Dimensions | | | | | Installation Tooling (# of crimps) | | | | | Wire Strip Length | |
|-----------------------|------------|----------------|--------------|------------|-------|-------|-------|-------|--|-------------------------------------|-------------------------------------|-------------------------------------|------------|-------------------|-----------|
| | | | | B | T | L | E | E1 | Dieless | Mech. MD6, OUR840, MD7-34R | Hydraulic | | Color Code | | Die Index |
| | | | | | | | | | | | PATMD6, Y500CTHS, PAT60018V | Y35, Y39, Y750 Y46, PAT750 | | | |
| YAZV2C2TC14FXSL | 2 AWG | 1/4" | 0.60" | 1.25" | 0.11" | 3.42" | 0.75" | 1.00" | Y1MRTC (4) MY29-3 (2) MY29-11 (2) MRC840 (2) Y644HSXT (1) Y81KFT (2) Y81KFTMBH (2) PAT644XT-18V (2) | W2CVT (2) W2CRT (2) | W2CVT (2) W2CRT (2) | U2CRT (2) | Brown | 10 | 1-5/16" |
| YAZV2C2TC14FXSLBOX500 | | 1/4" | 0.60" | 1.25" | 0.11" | 3.42" | 0.75" | 1.00" | | | | | | | |
| YAZV2C2TC38FXSL | | 3/8" | 0.60" | 1.25" | 0.11" | 3.42" | 0.75" | 1.00" | | | | | | | |
| YAZV2C2TC38FXSLBOX500 | | 3/8" | 0.60" | 1.25" | 0.11" | 3.42" | 0.75" | 1.00" | | | | | | | |
| YAZV252TC14FXSL | 1/0 AWG | 1/4" | 0.83" | 1.50" | 0.12" | 3.44" | 0.63" | 1.00" | Y1MRTC (4) MY29-3 (2) MY29-11 (2) MRC840 (2) Y644HSXT (1) Y81KFT (2) Y81KFTMBH (2) PAT644XT-18V (2) | W25VT (4) W25RT (4) X25RT (4) | W25VT (4) W25RT (4) X25RT (4) | U25RT (2) | Pink | 12 | 1-9/16" |
| YAZV252TC14FXSLBOX500 | | 1/4" | 0.83" | 1.50" | 0.12" | 3.44" | 0.63" | 1.00" | | | | | | | |
| YAZV252TC38FXSL | | 3/8" | 0.83" | 1.50" | 0.12" | 3.44" | 0.63" | 1.00" | | | | | | | |
| YAZV252TC38FXSLBOX500 | | 3/8" | 0.83" | 1.50" | 0.12" | 3.44" | 0.63" | 1.00" | | | | | | | |
| YAZV262TC14FXSL | 2/0 AWG | 1/4" | 0.93" | 1.50" | 0.13" | 3.58" | 0.63" | 1.00" | Y1MRTC (4) MY29-3 (2) MY29-11 (2) MRC840 (2) Y644HSXT (1) Y81KFT (2) Y81KFTMBH (2) PAT644XT-18V (2) | W26VT (4) W26RT (4) X26RT (4) | W26VT (4) W26RT (4) X26RT (4) | U26RT (2) | Black | 13 | 1-9/16" |
| YAZV262TC14FXSLBOX500 | | 1/4" | 0.93" | 1.50" | 0.13" | 3.58" | 0.63" | 1.00" | | | | | | | |
| YAZV262TC38FXSL | | 3/8" | 0.93" | 1.50" | 0.13" | 3.58" | 0.63" | 1.00" | | | | | | | |
| YAZV262TC38FXSLBOX500 | | 3/8" | 0.93" | 1.50" | 0.13" | 3.58" | 0.63" | 1.00" | | | | | | | |
| YAZV282TC14FXSL | 4/0 AWG | 1/4" | 1.14" | 1.62" | 0.15" | 3.64" | 0.63" | 1.00" | Y1MRTC (4) MY29-3 (2) MY29-11 (2) MRC840 (4) Y644HSXT (1) Y81KFT (2) Y81KFTMBH (2) PAT644XT-18V (2) | W28VT (4) W28RT (4) X28RT (6) | W28VT (4) W28RT (4) X28RT (6) | U28RT (2) | Purple | 15 | 1-11/16" |
| YAZV282TC14FXSLBOX500 | | 1/4" | 1.14" | 1.62" | 0.15" | 3.64" | 0.63" | 1.00" | | | | | | | |
| YAZV282TC38FXSL | | 3/8" | 1.14" | 1.62" | 0.15" | 3.64" | 0.63" | 1.00" | | | | | | | |
| YAZV282TC38FXSLBOX500 | | 3/8" | 1.14" | 1.62" | 0.15" | 3.64" | 0.63" | 1.00" | | | | | | | |

Note: All dimensions shown are for reference only.

Blue highlighted items are industry standard and most frequently ordered.

US: 1-800-346-4175

www.burndy.com

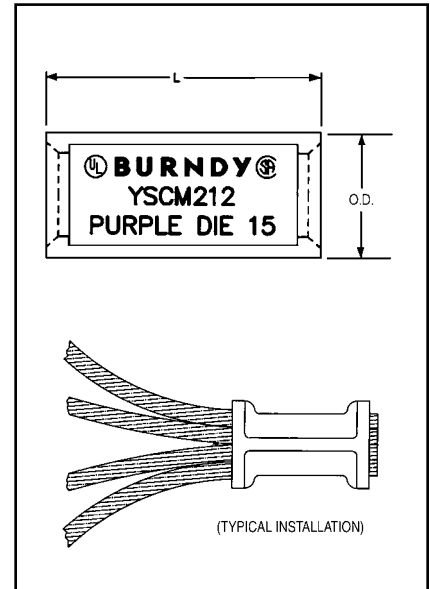
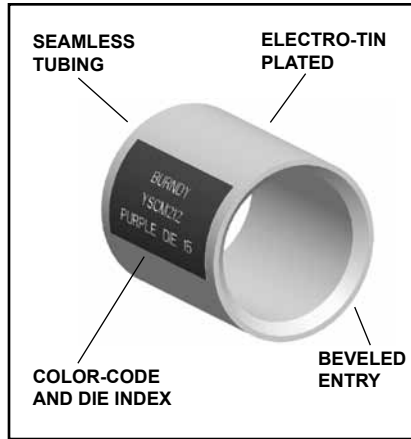
Canada: 1-800-387-6487

TYPE YSCM

HYLINK™

**Color-Coded
Uninsulated Parallel Splice**

Type YSCM HYLINK™ seamless parallel splice connectors permit stranded wires to be laid parallel inside the connector and spliced together with BURNDY® compression tools. Each YSCM connector accommodates a wide range of conductors and is color-coded to ensure proper tool and die match. YSCM connectors are cULus Listed WIRE CONNECTORS per UL 486A/B for GROUNDING and BONDING, and UL 467 and rated for Direct Burial in Earth and Concrete.



C-109

| Catalog Number | Conductor Range Cable ‡ | | Dimensions Inches [mm] | | Color Code | Die Index | Recommended Installation Tooling | | Wire Strip Length † |
|----------------|-------------------------|---------|------------------------|-----------|------------|-----------|------------------------------------|--------------------------|---------------------|
| | Circular Mils | | L ±.03 | O.D. ±.01 | | | OUR840, Y500CTHS, PAT60018V Series | Y35, Y750, PAT750 Series | |
| | Min. | Max. | | | | | | | |
| YSCM17 | 13,060 | 16,910 | 0.50 [13] | 0.27 [7] | Red | 49 | X8CRT, W8CRT | U8CRT | 11/16 |
| YSCM27 | 16,910 | 26,890 | 0.50 [13] | 0.31 [8] | Blue | 7 | X5CRT, W5CRT | U5CRT | 11/16 |
| YSCM42 | 29,970 | 41,520 | 0.50 [13] | 0.38 [10] | Gray | 8 | X4CRT, W4CRT | U4CRT | 11/16 |
| YSCM66 | 42,750 | 66,040 | 0.62 [16] | 0.47 [12] | Brown | 10 | X2CRT, W2CRT | U2CRT | 3/4 |
| YSCM80 | 67,980 | 80,020 | 0.62 [16] | 0.52 [13] | Green | 11 | X1CRT-1, W1CRT-1 | U1CRT-1 | 3/4 |
| YSCM104 | 82,870 | 103,630 | 0.69 [18] | 0.57 [14] | Pink | 12 | X25RT, W25RT | U25RT | 15/16 |
| YSCM133 | 104,960 | 133,220 | 0.81 [21] | 0.64 [16] | Black | 13 | X26RT, W26RT | U26RT | 1-1/16 |
| YSCM167 | 134,340 | 166,560 | 0.81 [21] | 0.70 [18] | Orange | 14 | X27RT, W27RT | U27RT | 1-1/16 |
| YSCM212 | 167,380 | 211,820 | 0.88 [22] | 0.78 [20] | Purple | 15 | X28RT, W28RT | U28RT | 1-1/16 |
| YSCM231 | 230,800 | 230,800 | 1.05 [27] | 0.81 [21] | Yellow | 16 | X29RT, W29RT* | U29RT | 1-1/16 |

Notes:

- Material: Copper per ASTM B75.
 - Finish: Tin plated. For nickel plating, add suffix "NK" to the Catalog Number.
- † Recommended strip length. Strip length dependant on size, no. of wires and insulation thickness.
- ‡ Refer to Circular Mil Table per ASTM B8 for total Class B Circular Mil calculations.
- * YSCM231 can also be installed with MY29-3 and retain Listings.

Add the circular mils of the wires you wish to splice; that sum would be used to determine the correct splice using the Min/Max columns on the table above.

The table to the right are for reference only.

Blue highlighted items are industry standard and most frequently ordered.

| Circular Mil Table per ASTM B8 | | | |
|--------------------------------|-----|-----------------|---------------------|
| Size | | ASTM Strandings | |
| Circular Mils | AWG | Class | Cable Diameter (in) |
| 1,022 | 20 | B | 0.036 |
| 1,624 | 18 | B | 0.045 |
| 2,583 | 16 | B | 0.057 |
| 4,107 | 14 | B | 0.072 |
| 6,530 | 12 | B | 0.091 |
| 10,380 | 10 | B | 0.116 |
| 13,090 | 9 | B | 0.130 |
| 16,510 | 8 | B | 0.146 |
| 20,820 | 7 | B | 0.164 |
| 26,250 | 6 | B | 0.184 |
| 33,100 | 5 | B | 0.206 |
| 41,740 | 4 | AA | 0.254 |
| 41,740 | 4 | B&A | 0.232 |
| 52,630 | 3 | AA | 0.285 |
| 52,630 | 3 | B&A | 0.260 |

| Circular Mil Table per ASTM B8 | | | |
|--------------------------------|-----|-----------------|---------------------|
| Size | | ASTM Strandings | |
| Circular Mils | AWG | Class | Cable Diameter (in) |
| 66,370 | 2 | AA | 0.320 |
| 66,370 | 2 | B&A | 0.292 |
| 83,690 | 1 | AA | 0.360 |
| 83,690 | 1 | A | 0.328 |
| 83,690 | 1 | B | 0.332 |
| 105,500 | 1/0 | A&A | 0.368 |
| 105,500 | 1/0 | — | 0.390 |
| 105,500 | 1/0 | B | 0.373 |
| 133,100 | 2/0 | A&A | 0.414 |
| 133,100 | 2/0 | — | 0.438 |
| 133,100 | 2/0 | B | 0.419 |
| 167,800 | 3/0 | A&A | 0.464 |
| 167,800 | 3/0 | — | 0.492 |
| 167,800 | 3/0 | B | 0.470 |
| 211,600 | 4/0 | A&A | 0.522 |
| 211,600 | 4/0 | — | 0.522 |
| 211,600 | 4/0 | B | 0.528 |