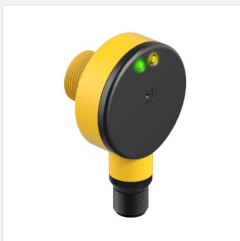




T18AW3LPQ1



EZ SEAM T18 Series: Polarized Retro
Range: 2 m Input: 20-250V ac
Output: SPST Solid-state Light Operate
Quick-Disconnect Connector
Part Number: 33418

CERTIFICATIONS



SPECIFICATIONS

Housing Style	Rectangular w/M18 Mount
Primary Housing Material	Thermoplastic
Sensing Mode (General)	Retroreflective
Sensing Mode (Detailed)	Polarized
Input/Output	Solid State AC Switch
Max Sensing Range (mm)	2000
Outputs	Solid State AC Switch
Power Supply/Supply Voltage	20-250 V ac
Connection	Integral OD
Quick Disconnect Type	1/2 in. (Micro)
Sensing Beam	Visible Red LED
Operation	Light Operate
Max Op. Temp. (°C)	70
Min Op. Temp. (°C)	-40
Output response time (ms)	16
Special Feature: Intrinsically Safe	No
Special Feature: Remote Teach	No
Special Feature: Water Detection	No
IP Rating	IP67, IP69K
Laser Classification	N/A
Delay at Power-up (ms)	100
Repeatability (µs)	4000
Number of Pins	4
NEMA Rating	NEMA 6P
Max Op. Relative Humidity (%)	90% @ 50°C
Lens Material	Acrylic
Adjustments	N/A
Barrel Diameter (mm)	18
Indicator	LEDs
Opposed Mode Emitter/Receiver	N/A
Feature: Washdown Rated	Yes
Feature: Clear Object Detection	No
Feature: Timing (Hold/Delay)	No
Feature: Ecolab Certified	Yes
Feature: Encapsulated	Yes
Feature: Hazardous Area	No
Feature: Audible	No

