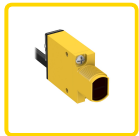
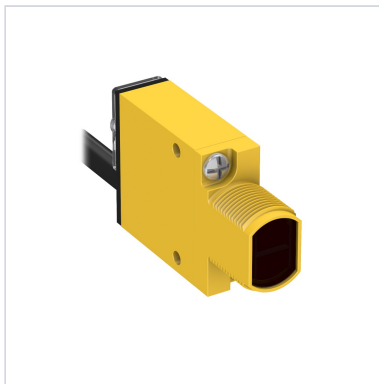




SM312LVAG

► ITEM DETAIL MINI-BEAM SERIES INDUSTRY STANDARD SENSOR



CERTIFICATIONS



FACTORY STOCK:	LIMITED STOCK
-----------------------	---------------

LIST PRICE (USD):	\$105.00
--------------------------	----------

MINI-BEAM: Polarized Retro

Range: 50 mm to 2m; Input: 10-30V dc

Output: Bipolar: 1 NPN; 1 PNP

2 m (6.5 ft) cable

Part Number: 25776

SPECIFICATIONS

Sensing Mode (General)	Retroreflective
Sensing Mode (Detailed)	Polarized
Housing Style	Rectangular w/M18 Mount
Primary Housing Material	Thermoplastic

Max Sensing Range (mm)	2000
Outputs	Bipolar (NPN & PNP)
Power Supply/Supply Voltage	10-30 V dc
Connection	2 m Cable
Quick Disconnect Type	No QD
Sensing Beam	Visible Red LED
Operation	Light/Dark Operate
Max Op. Temp. (°C)	70
Min Op. Temp. (°C)	-20
Output response time (ms)	1
Special Feature: Intrinsically Safe	No
Special Feature: Remote Teach	No
Special Feature: Water Detection	No
IP Rating	IP67
Delay at Power-up (ms)	100
Repeatability (µs)	300
Number of Pins	4
NEMA Rating	NEMA 1, 2, 3, 3S, 4, 4X, 6, 12
Max Op. Relative Humidity [%]	90% @ 50°C
Lens Material	Acrylic
Adjustments	Potentiometer
Barrel Diameter (mm)	18

Indicator	LEDs
Opposed Mode Emitter/Receiver	N/A
Feature: Timing (Hold/Delay)	No
Feature: Encapsulated	Yes
Feature: Hazardous Area	No
Feature: Audible	No
Input/Output	Discrete

DOWNLOADS

CAD FILES

	SM312 D/DV/LV/LVAG CABLE/PIGTAIL DXF
	SM312 D/DV/LV/LVAG CABLE/PIGTAIL IGS
	SM312 D/DV/LV/LVAG CABLE/PIGTAIL PDF
	SM312 D/DV/LV/LVAG CABLE/PIGTAIL STP

TECHNICAL LITERATURE

	MINI-BEAM SM312 SERIES, DC MODELS (ENGLISH, GERMAN, ITALIAN, FRENCH, SPANISH, JAPANESE) INSTALLATION GUIDE
	MINI-BEAM SM312 SERIES, DC MODELS DATA SHEET

CERTIFICATION

	DOC FOR MINIBEAM CERTIFICATION
---	--



® Banner Engineering Corp. | 9714 Tenth Avenue North | Minneapolis, MN 55441 | United States of America