

WLXDC

18" Die Cast Deep Back Cut-Off

200 - 400 watts PS | HPS

SERIES

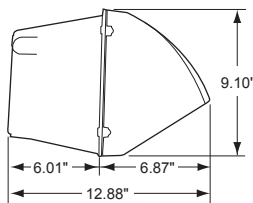
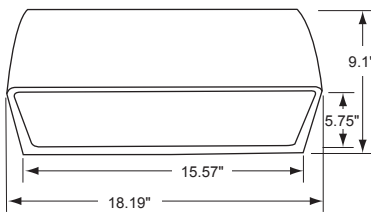
Wall Lighting

18" Die Cast Deep Back Cut-Off

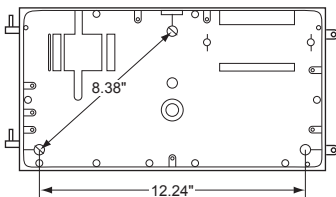


- Die Cast Aluminum Housing
- Face Frame Opens to the Side
- Reduces Light Pollution
- Reduces Light Trespass
- Threaded Apertures for Conduit & Photo Control

Dimensions

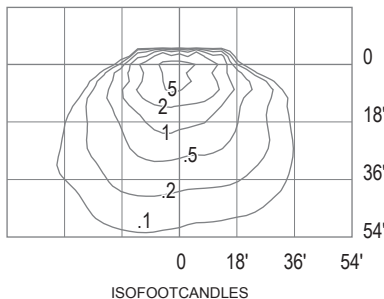


Mounting Detail



Photometrics

250W PS @ 18' Mounting Height



quick SHIP Products

CATALOG #	DESCRIPTION	VOLTS	BALLAST TYPE	LAMP
Pulse Start				
ⓔ WLXDC-320PQPK	320 watt PS	Quad	CWA	MS320/H
ⓔ WLXDC-400PQPK	400 watt PS	Quad	CWA	MS400/H
High Pressure Sodium				
WLXDC-400HQP	400 watt HPS	Quad	CWA	C400S51

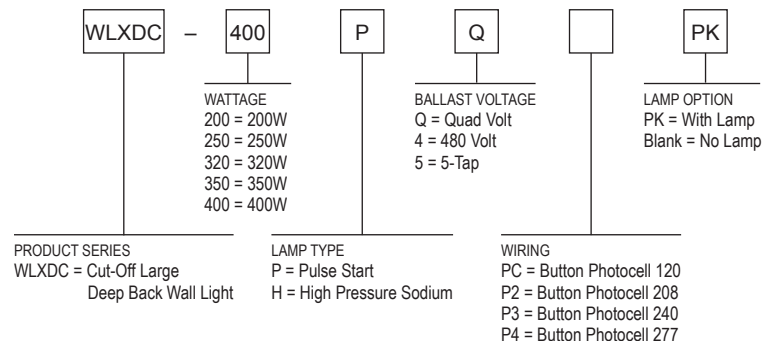
480V Available Upon Request

Accessories

CATALOG #	DESCRIPTION	STD. PKG.
320-017	Full Cut-Off Shield for WLXDC-Bronze	1
210-006	Face Frame Assembly for WLXDC-Bronze	1
230-002	Button 120V Photo Control	1
230-008	Button 208-277V Photo Control	1

Ordering Format

example:



Atlas Lighting Products provides a limited warranty for all products. A full warranty can be found at www.alpinc.com.

1-800-849-8485 • WWW.ATLASLIGHTINGPRODUCTS.COM