



Steel Fan & Fixture Box with Adjustable Mounting Bracket for Existing Construction

Heavy-duty, plated steel fan/fixture box with fully adjustable mounting bracket for retrofit installations. Adjusts from 16" to 24" o.c. spacing.

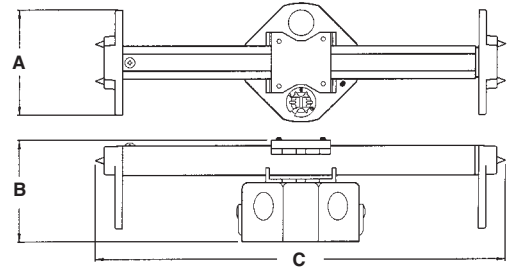


CATALOG NUMBER	UPC/DCI/NAED MFG #01 8997	DESCRIPTION/STYLE	UNIT PKG	STD PKG	DIM A	DIM B	DIM C
FBR420R	75325	2" Box Depth 20.0 Cu. In.	1	10	3.563	3.438	13.979

For fan/fixture *BOX* dimensions, refer to FBS420 on page N-15.
Refer to chart on page N-28 for load ratings and number of single conductors.
PATENT PENDING.



E48106 LR49636



For Joist or Rafters 16" to 24" on center

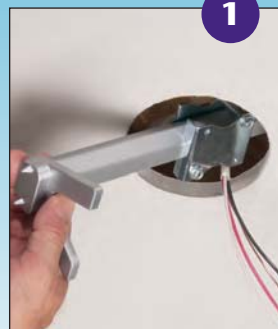
FBR420R includes...

Box/bracket, screws to adjust box position, installed NM cable connector, multiple KOs, and two screws for fan/fixture bracket installation (screwed in place until removed by installer).

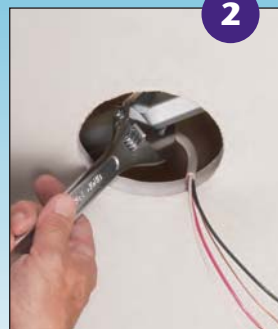
Features and Benefits

- No parts to lose – installation and adjustment screws ship parked in place
- Installs quickly and securely between joists or rafters 16" to 24" o.c.
- Fan/fixture installation screws are **"parked"**...ready for easy fan/fixture bracket installation!
- UL rated: 35 lb. fan, 50 lb. fixture; CSA rated: 50 lb. fan/fixture

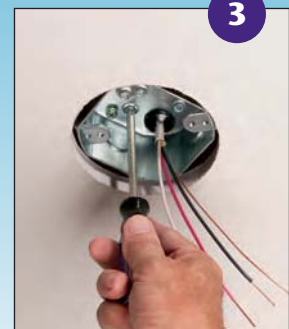
Installation Instructions



1. Cut a 4-1/16" diameter hole in ceiling. Remove box from sled and fit mounting bracket into hole. Position bracket between joists, with bracket resting on the ceiling.



2. Tighten the hex bar with a wrench to secure bracket between joists. As the hex bar is tightened, bracket ends bite into the joists, holding the unit secure.



3. Pull cable through installed NM cable connector. Reattach box, and center it in hole. Attach fan/fixture bracket with supplied screws.

Note: Install fan or fixture (not included) in accordance with manufacturer's instructions and all local applicable electrical codes, using the parked screws provided.