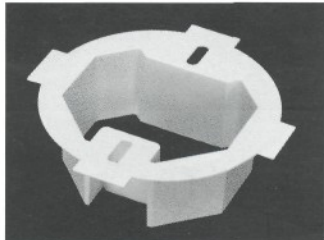




Ceiling Box Extender

For set back ceiling boxes. Fits 3-1/2" and 4" round or octagonal boxes.



Features and Benefits

- Complies with 2002 NEC Article 314.20
- Extends box up to 1-1/2" to bring it level with ceiling surface
- Trims to accommodate shallow boxes or to avoid obstructions

New!

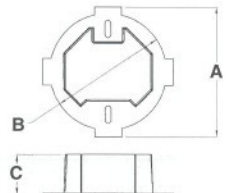
CATALOG NUMBER	UPC/DCI/NAED MFG #01 8997	UNIT PKG	STD PKG	DIM A	DIM B	DIM C
BE1R	40161	25	25	4.850	4.350	1.500

U.S. PATENTS: 6,204,447; 6,180,879.



E170558 LR49636

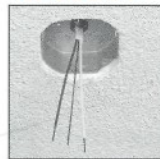
**NEW & IMPROVED
...HEAVY-DUTY PLASTIC,
UL LISTED!**



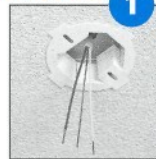
Installation Instructions

Problem...

SOLUTION...



Ceiling box is set back from surface.



Non-conductive BE1R Box Extender installs easily and extends box flush with ceiling surface.



Proceed with fixture installation. Flexible, plastic BE1R protects against wire damage.

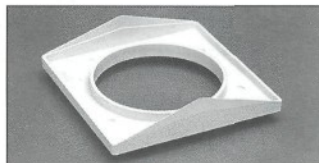


Fixture is installed and a level, code compliant installation is complete!

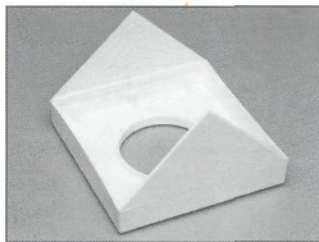
FIXTURE BAR FIRMLY SUPPORTED FOR EASIER CANOPY INSTALLATION!

Cathedral Ceiling Mounting Blocks

Paintable.



CF1840



CF4540

CATALOG NUMBER	UPC/DCI/NAED MFG #01 8997	BOX SIZE	UNIT PKG	STD PKG	DIM A	DIM B	DIM C	DIM D
CF1840	53171	4	25	25	5.912	.390	4.200	18°(4-12 pitch)
CF4540	40178	4	1	6	8.000	1.375	4.200	45°(12-12 pitch)

Fits 18° (4-12) the most common cathedral ceiling pitch. Cuts easily with scissors or snips to 8° (2-12) or any pitch in between.

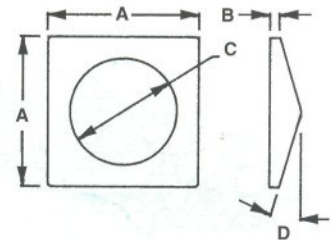
Fits 45° (12-12) cathedral ceiling pitch. Cuts easily along indicated guide lines with scissors or snips to 8° (2-12) or any pitch in between.

U.S. PATENT: 6,263,619.

Gives a clean finish...fills the gap between fan or fixture installation and cathedral ceiling!

The versatile CF4540 features pitch reference guides for a fast, accurate installation.

Perfect for retrofit...Cut out drywall and install fan/fixture box. CF4540 covers the entire work area.



Box-to-Box Locknut and SNAP-TITE® Connectors

Zinc die-cast.



260



260ST

CATALOG NUMBER	UPC/DCI/NAED MFG #01 8997	TRADE SIZE	UNIT PKG	STD PKG	DIM A	DIM B	DIM C	DIM D
260	00260	1/2	25	250	.855	.375	1.120	.100
260ST	06000	1/2	25	250	1.056	.478	1.105	.100

U.S. PATENTS: 5,171,164; 5,266,050, 5,373,106.

SNAP-TITE® products have been tested and listed by UL in accordance with UL's ground fault requirements. For additional information see page 5.



E60812 LR49636

