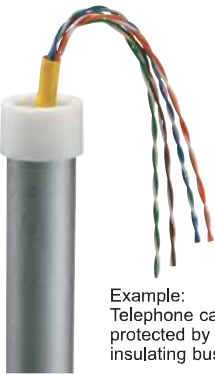




Arlington

Insulating Bushings

For Rigid • IMC. Press fit. Holds firmly in place while pulling cables.



Example: Telephone cable protected by Rigid insulating bushing.

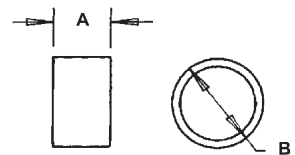
Meets 2011 NEC code requirements for 300-15(c) protection. Listed for use in environmental air handling spaces per 2011 NEC code requirements 300-22(c).

| CATALOG NUMBER | UPC/DCI/NAED MFG #018997 | TRADE SIZE | UNIT PKG | STD PKG | DIM A | DIM B |
|----------------|--------------------------|------------|----------|---------|-------|-------|
| RGD50 | 51930 | 1/2 | 100 | 1000 | .531 | .989 |
| RGD75 | 51932 | 3/4 | 100 | 1000 | .531 | 1.185 |
| RGD100 | 51933 | 1 | 100 | 100 | .625 | 1.542 |
| RGD125 | 51934 | 1-1/4 | 100 | 100 | .625 | 1.891 |
| RGD150 | 51935 | 1-1/2 | 100 | 100 | .625 | 2.062 |
| RGD200 | 51936 | 2 | 50 | 50 | .625 | 2.655 |
| EMT250† | 12240 | 2-1/2 | 25 | 25 | 1.225 | 3.062 |
| EMT300† | 12245 | 3 | 25 | 25 | 1.225 | 3.690 |
| EMT350† | 12250 | 3-1/2 | 25 | 25 | 1.231 | 4.187 |
| EMT400† | 12255 | 4 | 25 | 25 | 1.233 | 4.815 |

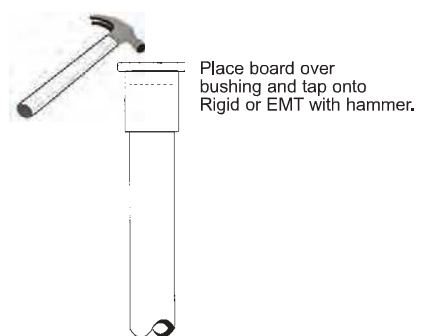
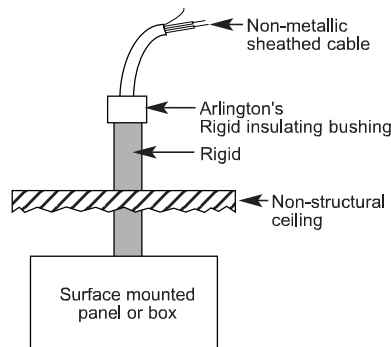
See page B-1 for EMT Insulating Bushings size 1/2" through 4".
† Can also be used for EMT.



E105706 LR49636



Arlington's Rigid Insulating Bushings protect cables from abrasion by rigid. Examples: Power, Cable TV, computer datalines, telephone/modem, a/v cables, alarm systems, security systems. Rigid is often used to protect cables where damage could occur in a house or building.



Zinc Combination Couplings EMT to Rigid

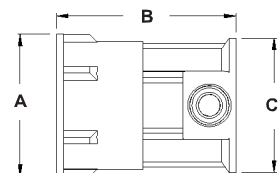
EMT compression to screw-in flexible metal conduit. Zinc die-cast.



2400

| CATALOG NUMBER | UPC/DCI/NAED MFG #018997 | TRADE SIZE | UNIT PKG | STD PKG | DIM A | DIM B | DIM C |
|----------------|--------------------------|------------|----------|---------|-------|-------|-------|
| 2400 | 06920 | 1/2" | 50 | 50 | 1.000 | 1.267 | .946 |
| 2410 | 06921 | 3/4" | 50 | 50 | 1.000 | 1.412 | 1.200 |
| 2411 | 06922 | 3/4" | 50 | 50 | 1.210 | 1.475 | 1.200 |

Use with any listed fitting.



Rigid • IMC Fittings