

“Take All” SNAP-TITE® Connectors

With spring steel clip. Single screw saddle type.
For NM • Flex • AC • ACG90 • AC90 • Teck90 • MCI steel and aluminum jacketed cables.
Zinc die-cast.



L15AST



L16ST

CATALOG NUMBER	UPC/DCI/NAED MFG #018997	TRADE SIZE	KO SIZE	UNIT PKG	STD PKG	DIM A	DIM B	DIM C	CABLE RANGE	END STOP DIAMETER
L15AST*	80040	3/8	1/2	50	500	.984	.420	1.032	.460 - .585	.340 x .430
L16ST†‡	80060	3/8	1/2	50	500	.923	.375	1.208	.405 - .650	.400 x .580
L160ST‡	02416	3/8	1/2	50	500	.954	.412	1.092	.370 - .690	.312
L17ST	34278	1/2	1/2	50	250	1.500	.462	1.416	.630 - .890	.620
L18ST	34282	3/4	3/4	25	125	1.400	.390	1.750	.820 - 1.040	.818
L19ST	34287	1	1	25	125	1.640	.443	2.048	1.100 - 1.400	1.030

*Provided with insulated throat.

†Listed for flexible cord.

‡Also for MCI-A cable. Refer to page E-25 for cable ranges.

Refer to chart on page E-22 for a list of cable types.

Concrete tight when taped. SNAP-TITE® products have been tested and listed by UL in accordance with UL's ground fault requirements. For additional information see page 6.



372D

LR49636



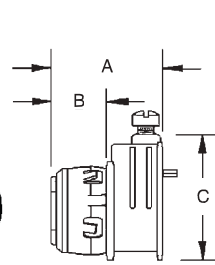
L15AST



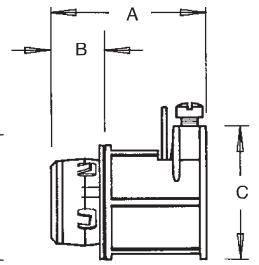
L160ST



L17ST - L19ST



L15AST - L16ST



L17ST - L19ST

Set-Screw Connectors

For steel only • Flex • AC • MCI cable. Zinc die-cast.



CATALOG NUMBER	UPC/DCI/NAED MFG #018997	TRADE SIZE	KO SIZE	UNIT PKG	STD PKG	DIM A	DIM B	DIM C	CABLE RANGE
845	00845	3/8	1/2	100	1000	.812	.905	.380	.445 - .630
845R	08459	3/8	1/2	100	1000	.812	.905	.380	.445 - .630

Refer to chart on page E-23 for a list of cable types.

Concrete tight when taped.

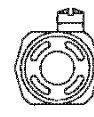
Not suitable for aluminum jacketed cables or aluminum flexible metal conduit.



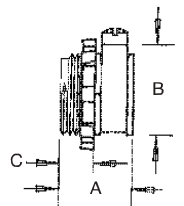
E60812 LR49636



845



845R



Set-Screw SNAP-TITE® Connectors

With spring steel clip.
For steel only • Flex • AC • MCI cable. Zinc die-cast.



CATALOG NUMBER	UPC/DCI/NAED MFG #018997	TRADE SIZE	KO SIZE	UNIT PKG	STD PKG	DIM A	DIM B	DIM C	CABLE RANGE
845ST	80092	3/8	1/2	100	1000	.942	.510	.905	.445 - .630

Refer to chart on page E-25 for a list of cable types.

Concrete tight when taped.

Not suitable for aluminum jacketed cables or aluminum flexible metal conduit.

SNAP-TITE® products have been tested and listed by UL in accordance with UL's ground fault requirements.

For additional information see page 6.



E60812 LR49636

