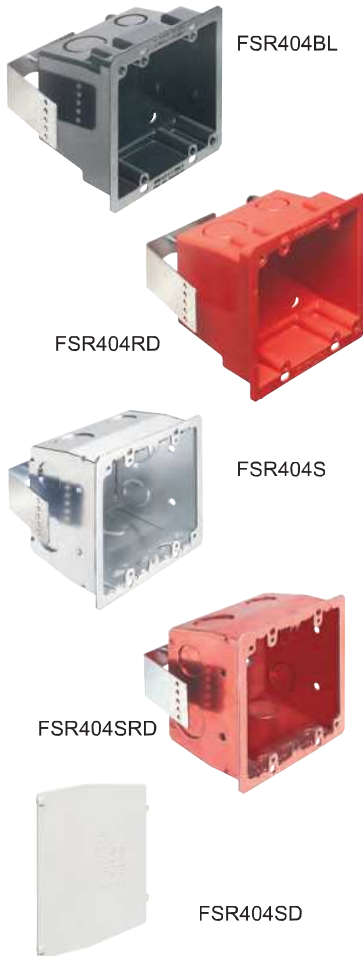


Non-Metallic and Plated Steel 4x4 Boxes

For retrofit construction. Screw hole patterns for 4x4 and 2-gang devices. Available in non-metallic (black and red plastic) and plated steel versions.

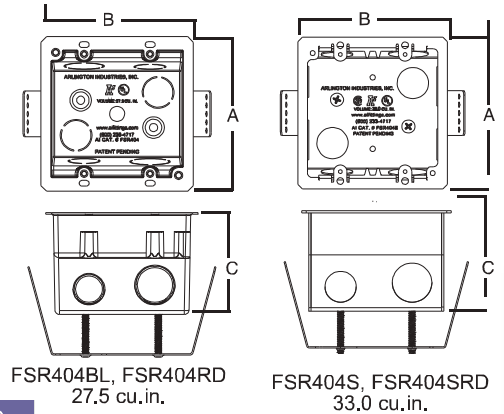


| CATALOG NUMBER | UPC/DCI/NAED MFG #018997 | DESCRIPTION/ ATTACHMENT | UNIT | STD | DIM A | DIM B | DIM C |
|----------------|--------------------------|-------------------------|------|-----|-------|-------|-------|
| FSR404BL | 00596 | Plastic 4x4 Box, Black | 25 | 25 | 4.250 | 4.185 | 2.796 |
| FSR404RD | 00598 | Plastic 4x4 Box, Red | 25 | 25 | 4.250 | 4.185 | 2.796 |
| FSR404S* | 00597 | Steel 4x4 Box, Plated | 25 | 25 | 4.250 | 4.185 | 2.815 |
| FSR404SRD* | 00599 | Steel 4x4 Box, Red | 25 | 25 | 4.250 | 4.185 | 2.815 |
| FSR404SD* | 00600 | Steel 4x4 Box, Divider | 25 | 25 | 3.581 | 0.141 | 2.750 |

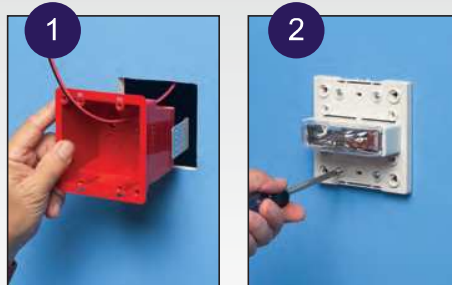
*CSA listed.



For wall thicknesses up to 1-1/4" – field modify bracket for thicknesses greater than 1-1/4".



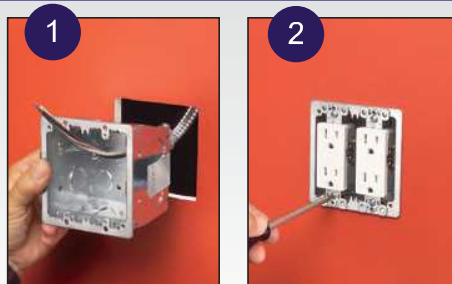
Typical Installation of Low Voltage Fire Alarm Box using Red 4x4 Box



1 Determine position of device. Cut hole. Pull wire(s) through appropriate knockout (connector). Install box in opening. FSR404RD shown.

2 Install fire alarm (or other device) through the screw holes in the box.

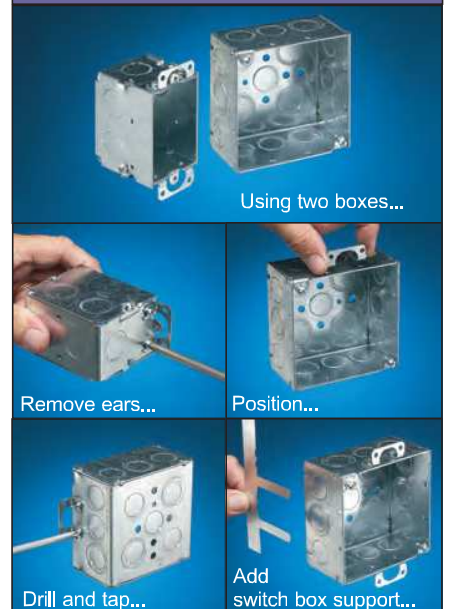
Typical Installation of Device using Steel or Black Plastic 4x4 Box



1 Determine position of device. Cut hole. Pull wire(s) through appropriate knockout (connector). Install box in opening. FSR404S shown.

2 Install devices through the screw holes in the box.

Eliminate all this!...



Features and Benefits

- Non-metallic and steel versions in red are ideal for installations of fire alarms or signaling devices
- 1/2" and 3/4" knockouts
- Spring clip holds box securely against wall when screws are tightened
- Weight rating: 6 lbs. for walls; 10 lbs. for ceilings
- Non-metallic boxes include (2) NM94 cable connectors