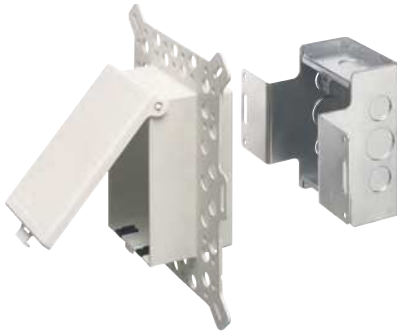


## Low Profile IN BOX™ with Metal Box for New Construction Stucco, Textured Surfaces, and Rigid Siding

Recessed, metallic electrical box with non-metallic, weatherproof-in-use cover for stucco over masonry or wood construction. Also for cementitious/fiber rigid lap siding. Accepts most single gang wiring devices and uses standard indoor wall plates or a GFCI cover plate. Non-metallic portion and covers are UV rated plastic for long outdoor life.



DSBVM1W



Bug Plugs ship installed in all IN BOX styles to seal unused cord hole openings.

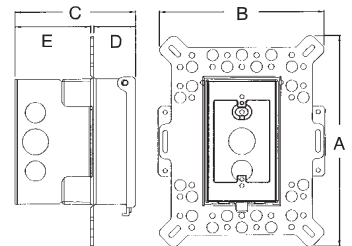
CATALOG NUMBER	UPC/DCI/NAED MFG #018997	ORIENTATION/COVER COLOR	UNIT	STD PKG	DIM A	DIM B	DIM C	DIM D	DIM E
DSBVM1C	09642	Vertical/Clear	1	4	9.058	7.012	5.129	1.775	3.221
DSBVM1W	09646	Vertical/White	1	4	9.058	7.012	5.129	1.775	3.221
DSBHM1C	09643	Horizontal/Clear	1	4	7.012	9.058	5.129	1.775	3.221
DSBHM1W	09648	Horizontal/white	1	4	7.012	9.058	5.129	1.775	3.221

Replacement covers available on page K-17.



WEATHERPROOF-IN-USE

Note: Meets 2011 NEC Section 406-9; for the protection of exterior outlets which require the use of a weatherproof while-in-use cover for all outdoor 15 or 20 AMP receptacles.



25.0 cu. in.

IN BOX for new stucco, textured surfaces, and rigid siding includes...Metallic box with non-metallic, weatherproof-in-use cover; installed bug plugs; (1) standard duplex and (1) standard GFCI face plate; block bushing with washer; and an in-place, disposable mud cover.

### Features and Benefits

- IN BOX replaces the installation of an electrical box and bubble cover assembly
- Installs in the wall, so less of it shows outside
- No gaskets required
- Holes in flange allow stucco to bond firmly
- Install option: Cover is removable for easier device installation
- White, non-metallic portion and white cover are textured/paintable
- Grounding wire provided
- For use with metal raceway systems