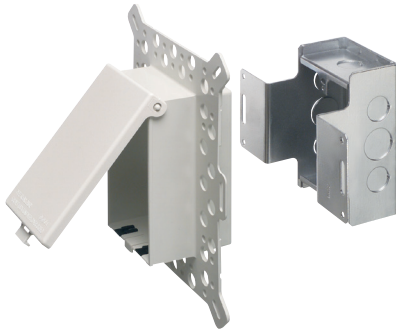


Low Profile IN BOX™ with Metal Box for New Construction Stucco, Textured Surfaces, and Rigid Siding

Recessed, metallic electrical box with non-metallic, extra-duty weatherproof-in-use cover for stucco over masonry or wood construction. Also for cementitious/fiber rigid lap siding. Accepts most single gang wiring devices and uses standard indoor wall plates or a GFCI cover plate. Non-metallic portion and covers are UV rated plastic for long outdoor life.



DSBVM1W



Bug Plugs ship installed in all IN BOX styles to seal unused cord hole openings.

Note: Meets 2014 NEC Section 406.9; for the protection of exterior outlets which require the use of an extra-duty weatherproof while-in-use cover for all outdoor 15 or 20 AMP receptacles.

CATALOG NUMBER	UPC/DCI/NAED MFG #018997	ORIENTATION/COVER COLOR	UNIT PKG	STD PKG	DIM A	DIM B	DIM C	DIM D	DIM E
DSBVM1C	09642	Vertical/Clear	1	4	9.058	7.012	5.129	1.775	3.221
DSBVM1W	09646	Vertical/White	1	4	9.058	7.012	5.129	1.775	3.221
DSBHM1C	09643	Horizontal/Clear	1	4	7.012	9.058	5.129	1.775	3.221
DSBHM1W	09648	Horizontal/white	1	4	7.012	9.058	5.129	1.775	3.221

Replacement covers available on page K-17.

PATENTED. ADDITIONAL PATENTS PENDING.

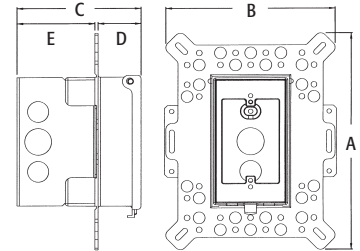


WEATHERPROOF-IN-USE

EXTRA-DUTY

IN BOX for new stucco, textured surfaces, and rigid siding includes...

Metallic box with non-metallic, weatherproof-in-use extra-duty cover; installed bug plugs; (1) standard duplex and (1) standard GFCI face plate; block bushing with washer; and an in-place, disposable mud cover.



25.0 cu. in.

FEATURES AND BENEFITS

- IN BOX replaces the installation of an electrical box and bubble cover assembly
- Installs in the wall, so less of it shows outside
- No gaskets required
- Holes in flange allow stucco to bond firmly
- Install option: Cover is removable for easier device installation
- White, non-metallic portion and white cover are textured/paintable
- Grounding wire provided
- For use with metal raceway systems

Scan For Video

