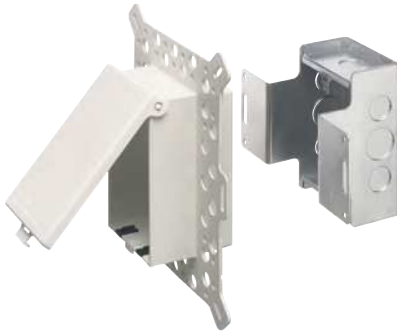


## Low Profile IN BOX™ with Metal Box for New Construction Stucco, Textured Surfaces, and Rigid Siding

Recessed, metallic electrical box with non-metallic, weatherproof-in-use cover for stucco over masonry or wood construction. Also for cementitious/fiber rigid lap siding. Accepts most single gang wiring devices and uses standard indoor wall plates or a GFCI cover plate. Non-metallic portion and covers are UV rated plastic for long outdoor life.



DSBVM1W



Bug Plugs ship installed in all IN BOX styles to seal unused cord hole openings.

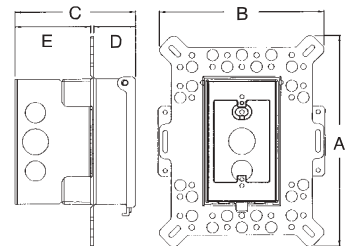
| CATALOG NUMBER | UPC/DCI/NAED MFG #018997 | ORIENTATION/COVER COLOR | UNIT | STD PKG | DIM A | DIM B | DIM C | DIM D | DIM E |
|----------------|--------------------------|-------------------------|------|---------|-------|-------|-------|-------|-------|
| DSBVM1C        | 09642                    | Vertical/Clear          | 1    | 4       | 9.058 | 7.012 | 5.129 | 1.775 | 3.221 |
| DSBVM1W        | 09646                    | Vertical/White          | 1    | 4       | 9.058 | 7.012 | 5.129 | 1.775 | 3.221 |
| DSBHM1C        | 09643                    | Horizontal/Clear        | 1    | 4       | 7.012 | 9.058 | 5.129 | 1.775 | 3.221 |
| DSBHM1W        | 09648                    | Horizontal/white        | 1    | 4       | 7.012 | 9.058 | 5.129 | 1.775 | 3.221 |

Replacement covers available on page K-17.



WEATHERPROOF-IN-USE

Note: Meets 2011 NEC Section 406-9; for the protection of exterior outlets which require the use of a weatherproof while-in-use cover for all outdoor 15 or 20 AMP receptacles.



25.0 cu. in.

IN BOX for new stucco, textured surfaces, and rigid siding includes...Metallic box with non-metallic, weatherproof-in-use cover; installed bug plugs; (1) standard duplex and (1) standard GFCI face plate; block bushing with washer; and an in-place, disposable mud cover.

### Features and Benefits

- IN BOX replaces the installation of an electrical box and bubble cover assembly
- Installs in the wall, so less of it shows outside
- No gaskets required
- Holes in flange allow stucco to bond firmly
- Install option: Cover is removable for easier device installation
- White, non-metallic portion and white cover are textured/paintable
- Grounding wire provided
- For use with metal raceway systems