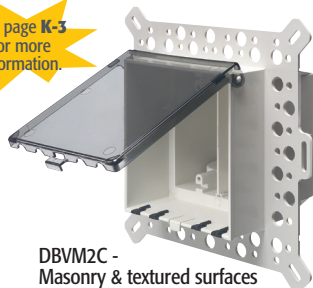


Two-Gang, Low Profile IN BOX™

Two-gang, recessed electrical box with weatherproof-in-use extra-duty cover for flat surfaces, masonry, retrofit, and siding construction (see below for product use). Non-metallic cover and base. Installs two outlets or combo devices. Box and white cover are textured/ paintable. UV rated plastic for long outdoor life.

See page **K-3** for more information.



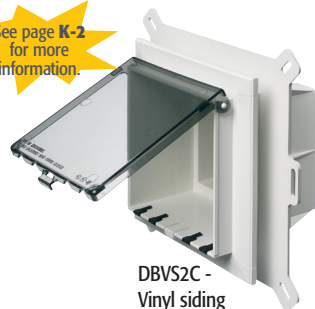
DBVM2C -
Masonry & textured surfaces

See page **K-7** for more information.



DBVR2W -
Flat surfaces

See page **K-2** for more information.



DBVS2C -
Vinyl siding



Bug Plugs ship installed in all IN BOX styles to seal unused cord hole openings.

CATALOG NUMBER	UPC/DCI/NAED MFG #018997	DESCRIPTION/ COVER COLOR	UNIT	STD PKG	DIM A	DIM B	DIM C	DIM D	DIM E
DBVM2C	03962	2-Gang, Vertical/Clear	1	4	9.058	8.992	5.142	1.919	3.223
DBVM2W	03963	2-Gang, Vertical/White	1	4	9.058	8.992	5.142	1.919	3.223
DBVR2C	03964	2-Gang, Vertical/Clear	1	4	7.159	6.888	5.142	1.295	3.847
DBVR2W	03965	2-Gang, Vertical/White	1	4	7.159	6.888	5.142	1.295	3.847
DBVS2C	03960	2-Gang, Vertical/Clear	1	4	9.058	8.992	5.142	2.263	2.879
DBVS2W	03961	2-Gang, Vertical/White	1	4	9.058	8.992	5.142	2.263	2.879

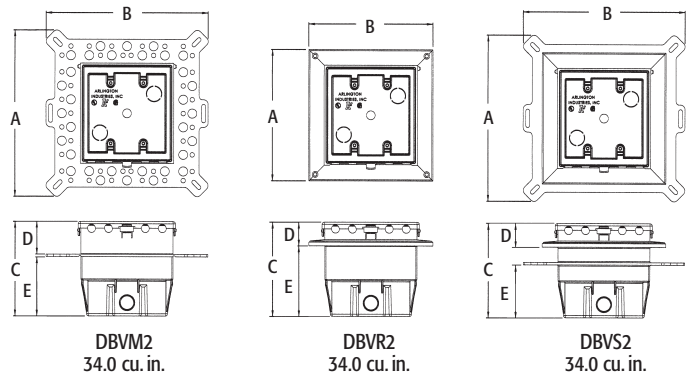
Add suffix "GC" to Catalog # when ordering in Canada, for example DBVM2CGC.

2-Gang, replacement covers available on page K-17.

PATENTED. ADDITIONAL PATENTS PENDING.



**WEATHERPROOF-IN-USE
EXTRA-DUTY**



Two-Gang IN BOX includes...

Box with weatherproof-in-use extra-duty cover; installed bug plugs; (1) decorator wall plate; and (2) NM cable connectors. DBVM2 also includes a block bushing with washer; and an in-place, disposable mud cover. DBVR2 also includes (1) set installation screws; and (1) roll of caulk. DBVS2 also includes (1) set installation screws.



Completed installation,
DBVS2C shown.

FEATURES AND BENEFITS

- IN BOX's one-piece assembly replaces the installation of an electrical box and bubble cover assembly
- Installs in the wall, so less of it shows outside
- No gaskets required
- For flat surfaces, vinyl siding, stucco over masonry or wood (with or without lath), and retrofit
- Install an outlet and a switch, or two switches in one location
- Includes 1/2" and 3/4" NM cable connectors and a two-gang rectangular device plate

Note: Meets 2014 NEC Section 406.9; for the protection of exterior outlets which require the use of an extra-duty weatherproof while-in-use cover for all outdoor 15 or 20 AMP receptacles.

Scan For Video

