



# Arlington

## Concrete Pipe Sleeves

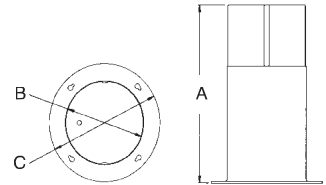
Provides an economical method of sleeving through concrete pour allowing cable or conduit to easily run from one floor to the next. Color - black.



CATALOG NUMBER	UPC/DCI/NAED MFG #018997	DESCRIPTION	FITS	STD PKG	DIM A	DIM B	DIM C
CPS15	72150	For 1-1/2" hole	1" pipe	10	8.500	1.625	3.125
CPS20	10960	For 2" hole	1-1/2" pipe	10	8.500	2.125	3.625
CPS30	72152	For 3" hole	2" pipe	10	8.500	3.125	4.625
CPS40	10962	For 4" hole	3" pipe	10	8.500	4.125	5.625
CPS50	72154	For 5" hole	4" pipe	10	8.500	5.125	6.625
CPS60	10964	For 6" hole	5" pipe	10	8.500	6.125	7.625

### Features and Benefits

- Stackable for extra deep pours
- Venting prevents sleeves from sticking together when wet
- Plastic

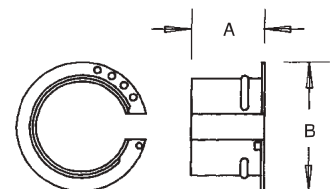


## Adjustable Throat Liners

To be installed in fittings after conduit, fitting and wire are in place. Allows installation to meet local electrical code. Non-metallic.



CATALOG NUMBER	UPC/DCI/NAED MFG #018997	TRADE SIZE	UNIT PKG	STD PKG	DIM A	DIM B
4001	04001	1/2	25	100	.670	.900
4002	04002	3/4	25	100	.710	1.220
4003	04003	1	25	100	.880	1.450
4004	04004	1-1/4	10	40	1.015	1.735



## Duct Seal Compound

Asbestos-free, non-drying, non-toxic, permanently soft.



CATALOG NUMBER	UPC/DCI/NAED MFG #018997	TRADE SIZE	UNIT PKG	STD PKG
DSC1	43600	1 LB	1	50
DSC5	43605	5 LB	1	10



### Features and Benefits

- Adheres to most clean, dry surfaces
- Will not adversely affect plastic materials or corrode metals

Miscellaneous