



## Steel Sealing Locknut

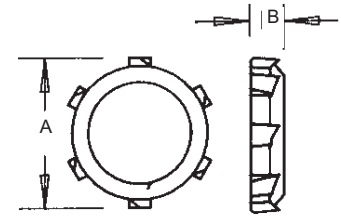
With PVC molded seal.



CATALOG NUMBER	UPC/DCI/NAED MFG #018997	TRADE SIZE	STD PKG	DIM A	DIM B
SL50	13500	1/2	50	1.125	.230
SL75	13750	3/4	50	1.375	.240
SL100	13100	1	25	1.715	.260
SL125	13125	1-1/4	25	2.065	.300
SL150	13150	1-1/2	25	2.375	.300
SL200	13200	2	25	2.885	.350
SL250	13250	2-1/2	10	3.450	.350
SL300	13300	3	10	4.125	.350
SL350	13350	3-1/2	10	4.675	.375
SL400	13400	4	10	5.225	.375
SL500	13501	5	10	6.487	.550
SL600	13600	6	10	7.830	.550

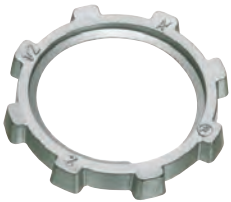


E60812 LR49636



## Die-Cast Locknuts

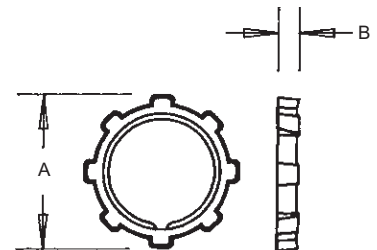
Cast thread. Zinc die-cast.



CATALOG NUMBER	UPC/DCI/NAED MFG #018997	TRADE SIZE	UNIT PKG	STD PKG	DIM A	DIM B
DLN1	43510	1/2	200	2000	1.100	.160
DLN2	43520	3/4	100	1000	1.387	.160
DLN3	43530	1	100	500	1.685	.190
DLN4	43540	1-1/4	50	250	2.115	.190
DLN5	43450	1-1/2	50	250	2.370	.190
DLN6	43560	2	25	250	2.885	.190
DLN7	43570	2-1/2	60	60	3.450	.250
DLN8	43580	3	50	50	4.190	.250
DLN9	43590	3-1/2	50	50	4.700	.250
DLN10	43511	4	30	30	5.300	.250



E60812 LR49636



Rigid • IMC Fittings