

LED FLEXFORM 30 & 60

Super bright, dimmable light available in 12V or 24V

LED FLEXFORM 30 & 60

Great for coves, up lighting, under cabinets, in cabinets, back-lighting, space-limited areas, signs, retail counters, display cases, reception areas, lounges, edge lighting and silhouettes.

FEATURES

- Low profile – 13/32" wide by 3/32" high
- Simple to install – FlexForm tape light uses easy tool-free connection system and mounts with 3M adhesive backing
- Sold in convenient kits with 16.4 feet (5 meters) of flexible tape light (see below for kit components)
- Warm White (3000K) and Bright White (5000K) are offered in 12V TL30 and TL60 kits and 12V TL30 and TL60 100 foot reels
- Ultra Warm White is offered in 24V kits, TL-30 and TL-60 only
- Other colors also offered 12V kits (60 LEDs per meter only): Amber, Blue, Green, Red and Yellow
- Small cutting increments accommodate most layouts
- Suitable for outdoor use – IP 44 rated – when used outdoors, all power connections, Ls, Ts and splice connectors must be properly sealed with silicone and shrink tube



KITS AND REELS

12V 16.4' Kits

TL-30

12V LED FlexForm
(30 LEDs per meter,
2.2 watts/ft)

WW = Warm White
WH = Bright White

TL-60

12V LED FlexForm
(60 LEDs per meter,
4.4 watts/ft)

AM = Amber **BL** = Blue
GR = Green **RE** = Red
WH = Bright White **YE** = Yellow
WW = Warm White

12V 100' Reels

TL

12V LED
FlexForm

30 = 30 LEDs/
meter

60 = 60 LEDs/
meter

WW = Warm White
WH = Bright White

100

98.4 ft
reels

24V 16.4' Kits

TL-24V

24V LED FlexForm

30 = 30 LEDs/
meter

60 = 60 LEDs/
meter

UWW

Ultra Warm
White



Amber (AM)



Blue (BL)



Green (GR)



Red (RE)



Bright White
(WH)



Warm White
(WW)

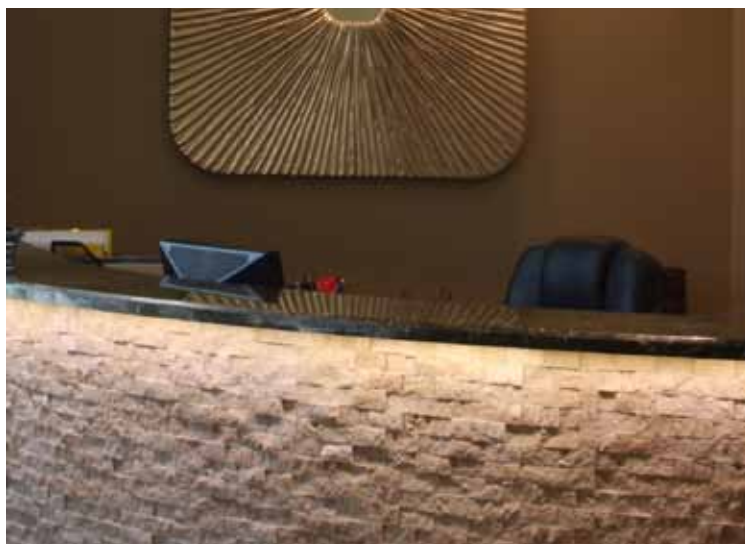


Yellow (YE)



Ultra
Warm White
(UWW)

Note: Colors are representative but do not reflect the exact color you may receive.



Each kit includes a 16.4' reel of LED FlexForm with 3M adhesive, (3) 36" power connectors for plug-in drivers, (3) 36" adaptor cables for hardwire applications and 16 mounting clips.

100' reels do not include accessories.

ACCESSORIES

 <p>TL-CONKIT-NP Power connection kit includes 36" DC lead wire (22AWG, white) with RCA adaptor for use with plug-in power supplies and 36" adapter cable (22AWG black); hardwire lead totals 6 feet</p>	 <p>PS-(WATTAGE)-12VPI Plug-in power supply, 12V DC 18, 36 and 60 watt capacities c/UL/us Listed, non-dimming</p>
 <p>TL-JUMP.5, TL-JUMP1, TL-JUMP2 Jumper for connecting two sections of FlexForm together, three lengths available: TL-JUMP.5 = 6", TL-JUMP1 = 12", TL-JUMP2 = 24"</p>	 <p>RCA-EX24 24" extension RCA-Y 'Y' extension (splitter) for use with plug-in power supplies; can be combined with RCA-EX24</p>
 <p>TL-SPL Splice connectors for joining two sections together, sold in bags of 5 TL-CLIPS Clear plastic mounting clips with screws, sold in bags of 16</p>	 <p>LED-DR-12 6-1/4"L x 1-1/4"W x 1-13/16"H 12V DC power supply, 1-25 watts; Class 2, c/UR/us Recognized, non-dimming ENCL-11 11-1/2"L x 1-7/8"W x 1-3/4"H Enclosure for LED-DR-12 or LED-DR60-12</p>
 <p>TL-L "L" connectors for joining two sections together at a 90° angle TL-T "T" connectors for joining three sections together in a "T" formation</p>	 <p>LED-DR60-12 7-13/16"L x 1-3/4"W x 1-5/8"H 12V DC power supply, 1-60 watts; Class 2 c/UR/us Recognized, non-dimming LED-DR100-12 9"L x 2-9/16"W x 1-5/8"H 12V DC power supply, 1-100 watts; c/UR/us Recognized, non-dimming</p>
 <p>AL-3R-6A Repeater for PWM dimmer 12V or 24V DC input only (not 120V); two power inputs and one signal input; three 6A signal outputs, for use with PS series 5"L x 15/16"H x 2-1/2"W</p>	 <p>PS-25-12*, PS-25-24* 1-25W Power supply for LED loads 4"L x 3-7/8"W x 1-1/2"H, c/UR/us PS-60-12*, PS-60-24* 1-60W Power supply for LED loads 6-1/4"L x 3-7/8"W x 1-1/2"H, c/UR/us</p>
 <p>AL-PWM-6A Pulse width modulation (PWM) dimmer Fits decora style trim plates and standard junction boxes; 12V or 24V DC input only; 6A output (max load without repeater is 72W at 12V, 144W at 24V) White finish only</p>	 <p>PS-100-12*, PS-100-24* 1-100W Power supply for LED loads 7-7/8"L x 3-7/8"W x 1-1/2"H, c/UR/us PS-150-12*, PS-150-24* 1-150W Power supply for LED loads 7-7/8"L x 4-3/8"W x 2"H, c/UR/us</p>

* Input range = 88-264V AC, choose 12V DC or 24V DC output

TECHNICAL SPECIFICATIONS

Voltage	12V and 24V DC operation
Construction	Rolled copper strip with 5050 SMD chips encapsulated in clear silicone
Mounting	Mount to suitable surface using LED FlexForm's 3M adhesive backing
Reel lengths	16.4' kit (5 meters) and 100' bulk reel (in 12V only)
Dimensions	L = 16.4' for kits or 100' for 12V reels, W = 13/32", H = 3/32"
Cuttability	Every 3.94" (10cm) for TL-30 and TL-24V-60; every 1.97" (5cm) for TL-60; every 7.88" (20 cm) for TL-24V-30
Light output	TL-30-WH = 97 lumens/ft, TL-30-WW = 74 lumens/ft, TL-24V-30-UWW = 85 lumens/ft, TL-60-WH = 194 lumens/ft, TL-60-WW = 148 lumens/ft, TL-24V-60-UWW = 170 lumens/ft
Wattage	TL-24V-30 and TL-30 = 2.2 watts/ft (7.2 watts/meter); TL-24V-60 and TL-60 = 4.4 watts/ft (14.4 watts/meter)
Maximum run	12V TL30, 12V TL60 and TL-24V-60 = 16.4 feet (5 meters) max; TL-24V-30 = 32.8 feet (10 meters) max
LED specs	5050 SMD LEDs, 50,000 hours rate life, Bright White (WH) = 5000K ± 300K, CRI = 77; Warm White (WW) = 3000K ± 300K, Ultra Warm White = 2700K ± 300K, CRI = 75, 120° beam angle
Dimmers	Dimmable with pulse width modulation dimmer (AL-PWM-6A) used in conjunction with PS series drivers
Packaging	White box

