

FASTENERS

Power-Strut Clamping Nuts are cold formed, with two grooves, each with six sharp teeth and then case hardened. These sharp hardened teeth bite into the inturned edges of the Power-Strut channel forming a strong vise-like connection giving greater strength and resistance to slippage.

MATERIAL:

Channel clamping nuts meet ASTM A576 GR1015M, and are case hardened. Hex head bolts meet SAE J429 GR 2. Square and hex nuts meet ASTM A563 GR A.

SCREW THREADS DATA:

All Power-Strut nuts and bolts are manufactured to meet the Unified Screw Threads standard, ANSI B1.1, Coarse Series UNC, class 2. Continuous Threaded Rod: Meets ASTM A-510.

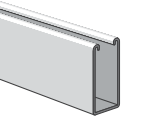
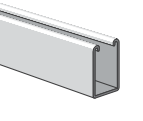
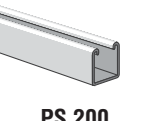
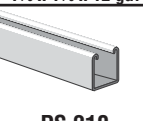
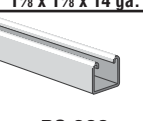
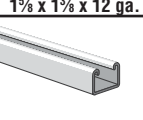
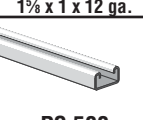
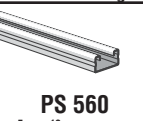
STANDARD FINISH:

All fasteners have an electro-galvanized finish.

RECOMMENDED BOLT TORQUE:

Bolt Size	1/4"-20	5/16"-18	3/8"-16	1/2"-13	5/8"-11	3/4"-10
Rec. Torque Ft/Lbs	6	11	19	50	100	125
Max. Torque Ft/Lbs	7	15	25	70	125	135

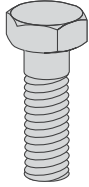
Channel Nut Selection Chart

Channel \ Nuts	Nuts										
	PS LS	PS SS	PS RS	PS NS	PS NS S	PS 517	PS TG	PS 3281	PS 3500	PS ML	PS KW
 PS 100 1 1/2 x 3/4 x 12 ga.	✓			✓			✓	✓		✓	✓
 PS 150 1 1/2 x 2 1/8 x 12 ga.	✓			✓			✓	✓		✓	✓
 PS 200 1 1/2 x 1 1/8 x 12 ga.			✓	✓		✓	✓	✓	✓	✓	✓
 PS 210 1 1/2 x 1 1/8 x 14 ga.			✓	✓		✓	✓	✓	✓	✓	✓
 PS 300 1 1/2 x 1 1/8 x 12 ga.			✓	✓		✓	✓	✓	✓	✓	✓
 PS 400 1 1/2 x 1 x 12 ga.		✓		✓	✓		✓	✓		✓	✓
 PS 500 1 1/2 x 1 3/8 x 14 ga.		✓		✓*	✓		✓	✓		✓	✓
 PS 520 1 1/2 x 1 3/8 x 12 ga.		✓		✓*	✓		✓	✓		✓	✓
 PS 560 1 1/2 x 1 3/8 x 16 ga.		✓		✓*	✓		✓	✓		✓	✓

✓ Indicates Nuts To Be Used With The Channel

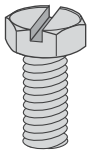
* 3/8" or smaller

PS 6024 – Hex Head Cap Screw



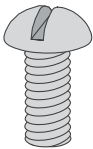
Size	Wt./100 pcs
1/4 x 3/4"	1.5
1/4 x 1"	1.8
1/4 x 1 1/4"	2.1
1/4 x 1 1/2"	2.4
3/8 x 3/4"	3.6
3/8 x 1"	4.2
3/8 x 1 1/4"	4.9
3/8 x 1 1/2"	5.6
3/8 x 2"	7.2
1/2 x 3/4"	8.1
1/2 x 1"	9.2
1/2 x 1 1/4"	10.4
1/2 x 1 1/2"	11.6
1/2 x 1 3/4"	13.0
1/2 x 2"	14.4

PS 6075 – Slotted Hex Head Machine Screw



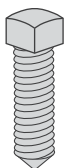
Size	Wt./100 pcs
1/4 x 3/4"	1.7
5/16 x 1"	2.6
5/16 x 1 1/4"	3.0
5/16 x 1 1/2"	3.4
3/8 x 1 1/4"	5.3

PS 6072 – Round Head Machine Screw



Size	Wt./100 pcs
1/4 x 3/4"	1.3
1/4 x 1"	1.6
1/4 x 1 1/4"	1.9
3/8 x 1"	4.4
3/8 x 1 1/4"	5.0
3/8 x 1 1/2"	5.6

PS 6064 – Square Head Cone Point Set Screw



Size	Wt./100 pcs
3/8 x 1 1/2"	4.5
3/8 x 2"	6.1
1/2 x 1 1/2"	8.5
1/2 x 2"	11.4

Hanger rod stiffener assembly for 3/8" thru 5/8" threaded rod.

PS 83 – Hexagon Nut



Size	Wt./100 pcs
1/4"	0.7
3/8"	1.6
1/2"	3.8
5/8"	7.3
3/4"	11.9

PS 6108 – Square Nut



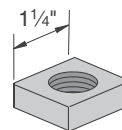
Size	Wt./100 pcs
1/4"	.9
5/16"	1.6
3/8"	2.6
1/2"	5.8

PS 209 – Flat Washer



Size Pcs.	Outside Diameter	Wt./100 pcs
1/4"	3/4"	0.7
3/8"	1"	1.5
1/2"	1 3/8"	3.9
5/8"	1 3/4"	7.7
3/4"	2"	11

PS 6112 - Oversize Square Nut



Size	Wt./100 pcs
1/4"-20	13
3/8"-16	14
1/2"-13	14
5/8"-11	12
3/4"-16	11
7/8"-11	10

FASTENERS

Finish: Electro-galvanized Order By: No., Size and Finish



PS 230 – Fender Washer



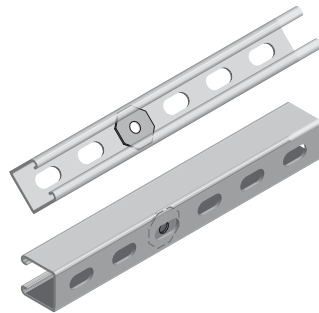
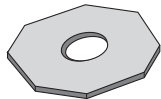
Size	Wt./100 pcs
1/4"	3.3
3/8"	3.0
1/2"	2.8

PS 211 – Lock Washer



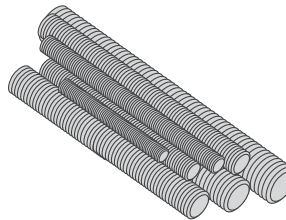
Size	Wt./100 pcs
1/4"	0.3
3/8"	0.7
1/2"	1.5

PS 231 – Slot Adapter



Size	Wt./100 pcs
1/4"	1.0
3/8"	1.5

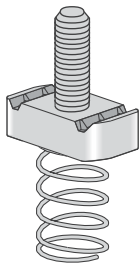
PS 146 – Continuous Thread Rod



Finish: Plain or Electro-galvanized
Standard Length: 6' or 10'; Other lengths available
 Low Carbon Steel
 Fy = 32,000 psi minimum
 Ft = 52,000 psi minimum

Rod Size	Wt./100 pcs.		
	6' Lengths	10' Lengths	12' Lengths
1/4"	73	121	146
3/8"	175	292	350
1/2"	319	531	638
5/8"	504	840	1,008
3/4"	740	1,234	1,480

PS 517 – Channel Nut with Stud

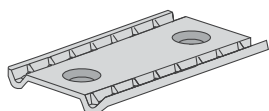


Size	Wt./100 pcs
1/4" x 1"	8.1
1/4" x 1 1/4"	8.3
1/4" x 1 1/2"	8.6
1/4" x 2"	9.1
3/8" x 1"	13.0
3/8" x 1 1/4"	14.0
3/8" x 1 1/2"	14.0
3/8" x 2"	15.0
1/2" x 1"	15.0
1/2" x 1 1/4"	16.0
1/2" x 1 1/2"	17.0
1/2" x 2"	19.0

Use With: PS 200, PS 210 and PS 300 channel.

Load Information: See the technical data section, page 158

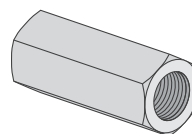
PS 3281 – Double Conveyor Adjusting Nut



Size	Threads	Wt./100 pcs
3/8"	16	17.5

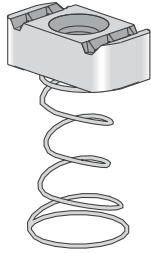
Use With: All 1 5/8" channel.

PS 135 – Rod Coupling



Rod Size	Max Load lbs.	Wt./100 pcs.
1/4"	240	2
3/8"	610	9
1/2"	1,130	10
5/8"	1,810	18
3/4"	2,710	28

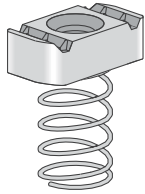
PS LS – Clamping Nut with Long Spring



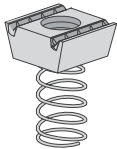
Size	Threads	Wt./100 pcs
1/4"	20	7.5
3/8"	16	10.2
1/2"	13	12.3
5/8"	11	15.8
3/4"	10	14.1

Use With: PS 100 and PS 150 Channel.

PS RS – Clamping Nut with Long Spring



Size	Threads	Wt./100 pcs
#8-32	32	7.0
#10-24	24	7.2
#10-32	32	7.2
1/4"	20	7.1
5/16"	18	7.0
3/8"	16	9.9
1/2"	13	11.9



Size	Threads	Wt./100 pcs
5/8"	11	15.5
3/4"	10	13.8
7/8"	9	14.3

Use With: PS 200, PS 210 and PS 300 Channel.

PS SS – Clamping Nut with Short Spring

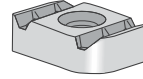


Size	Threads	Wt./100 pcs
#8-32	32	7.0
#10-24	24	7.0
#10-32	32	7.0
1/4"	20	6.9
5/16"	18	6.7
3/8"	16	9.6
1/2"	13*	8.8
5/8"	11*	11.5
3/4"	10*	10.0

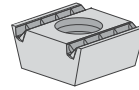
Use With: PS 400, PS 500, PS 520, and PS 560 channel.

*PS SS 1/2" and PS SS 5/8" nuts have 3/8" body thickness.

PS NS – Clamping Nut without Spring



Size	Threads	Wt./100 pcs
#8-32	32*	8.0
#10-32		6.6
#10-24	24*	6.7
1/4"	20*	6.6
5/16"	18*	6.4
3/8"	16*	9.3
1/2"	13	11.4



Size	Threads	Wt./100 pcs
5/8"	11	15.2
3/4"	10	13.0
7/8"	9	14.0

Use With: PS 100, PS 150, PS 200, PS 210 and PS 300 channel.

*Can be used with PS 400, PS 500, PS 520 and PS 560 channel.

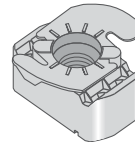
PS NS S – Shallow Clamping Nut without Spring



Size	Threads	Wt./100 pcs
1/2"	13	6.9
5/8"	11	9.7
3/4"	10	8.4

Use With: PS 500, PS 520, and PS 560 channel.

PS TG – Top Grip™ Nut

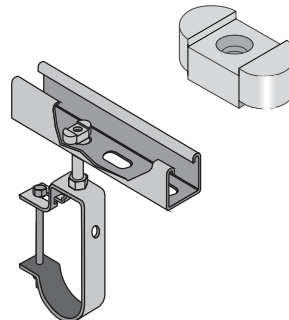


Part No.	Size	Threads	Wt./100 pcs
PSTG 1/4	1/4"	20	7
PSTG 3/8	3/8"	16	10
PSTG 1/2*	1/2"	13	8

Use With: All 1 5/8" Channel.

*PS TG 1/2" nut has a 3/8" body thickness

PS ML – Missing Link Multi-Purpose Strut Fastener



Use With: Any slotted channel.

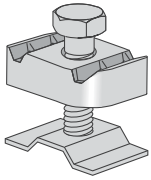
Size	Threads	Wt./100 pcs
1/2"	13	6.9
5/8"	11	9.7
3/4"	10	8.4

FASTENERS

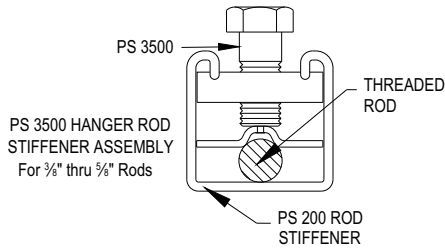
Finish: Electro-galvanized Order By: No., Size and Finish



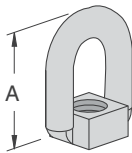
PS 3500 3/8" - 5/8" – Seismic Rod Stiffener



Part No.	Wt./100 pcs
PS 3500 3/8"-5/8"	16

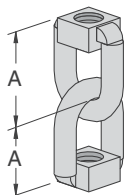


PS 202 – Eyelet



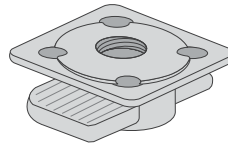
Rod Size	A	Stock Dia.	Max. Load lbs.	Wt. 100 pcs
3/8"	1 3/4"	3/8"	610	15
1/2"				18

PS 204 – Linked Eyelets



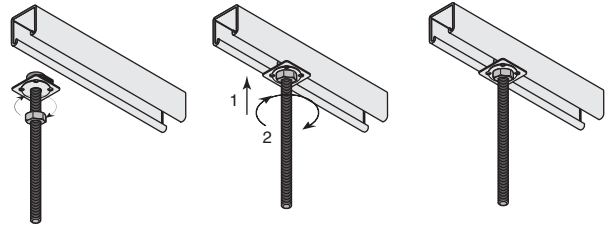
Rod Size	A	Stock Dia.	Max. Load lbs.	Wt./100 pcs
3/8"	1 7/16"	3/8"	610	23
1/2"	1 3/8"			32

PS KW – Kwik Washer™

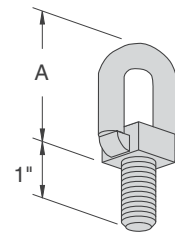


Size	Load Lbs	Wt./100 pcs
1/4"	250	1.2
3/8"	610	2.6
1/2"	1,130	9.3

Use With: Any channel.

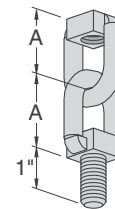


PS 205 – Eyelet with Stud



Thread Size	A	Stock Dia.	Max. Load lbs.	Wt./100 pcs
3/8"	1 13/16"	3/8"	610	16
1/2"	1 3/4"			20

PS 203 – Linked Eyelet with Stud



Rod Size	A	Stock Dia.	Max. Load lbs.	Wt./100 pcs
3/8"	1 7/16"	3/8"	610	27
1/2"	1 3/8"			45