



Specifications

Enclosure Rating	NEMA 7 and 9
Certifications	UL Listed and CSA Certified
Ambient Temperature [C (F)] Ⓢ	-29...+121° (-20...+250°) except devices with wobble stick operators. Wobble stick models are rated from -18...+54° (0...+130°)

AC Contact Rating (Maximum per Pole, 50 or 60Hz, Same Polarity)

NEMA Rating Designation	Max Voltage	A		Continuous Carrying Current	VA	
		Make	Break		Make	Break
B600	120	30	3.00	5A	3600	360
	240	15	1.50	5A	3600	360
	480	7.5	0.75	5A	3600	360
	600	6	0.60	5A	3600	360

DC Contact Rating (Maximum per Pole)

NEMA Rating Designation	Voltage Range	Current Rating
P300	115-125	1.1 A
	230-250	0.55 A

Note: Temperature range below 0°C (+32°F) is based on the absence of freezing moisture or water.

Description

Bulletin 802XR NEMA Type 7 and 9 limit switches for hazardous locations are designed to operate in atmospheres and locations defined as Class I, Groups B, C or D or Class II, Groups E, F or G in the National Electrical Code. Typical applications for this switch include refineries, distilleries, grain elevators and flour mills. For Class I, Division 2 locations, a Bulletin 802R limit switch may also be used (see page 5-34).

As an added protection, the contact is hermetically sealed in a glass envelope for excellent contact reliability even in contaminated atmospheres. This switch is Programmable Controller compatible (24V and above) and is pilot duty rated NEMA B600 for AC and NEMA P300 for DC as shown in the specification.

Features

- Class I, Groups B, C, and D or Class II, Groups E, F and G
- Side rotary, wobble stick, adjustable top and top or side push styles with and without rollers

Sealed Contact

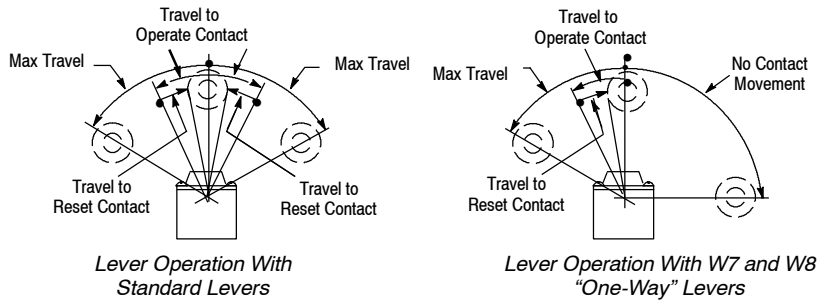
- Lever Type • Spring Return page 5-82
- Lever Type • page 5-83
- Maintained Contact
- Push Type • Spring Return . page 5-84
- Cat Whisker •
- Spring Return page 5-86

Limit Switches

802XR Lever Type • Spring Return

Sealed Contact Hazardous Location Switches

Range of Operation



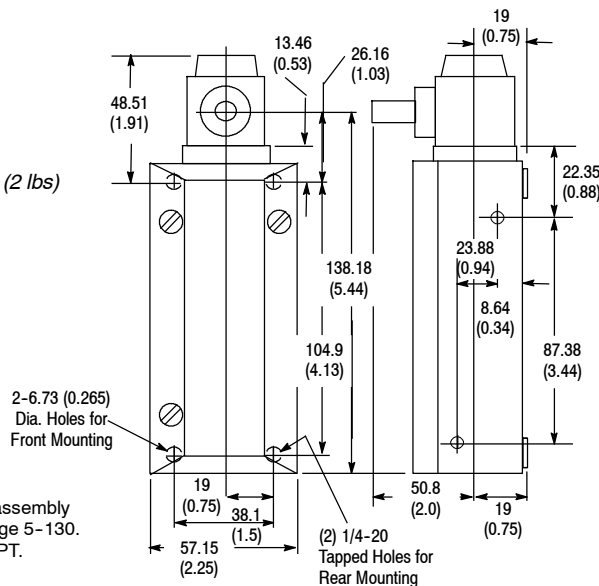
Switch Without Lever

Product Selection

Lever Movement	Torque to Operate (Max)	Travel to Operate Contact (Max)	Max Travel	Travel to Reset Contact (Max)	Contact Type	Cat. No.
Clockwise or Counterclockwise	0.34 N•m (3 lb•in)	16°	42°	9°	N.O.	802XR-AF7
					N.C.	802XR-AC7
	0.51 N•m (4.5 lb•in)	7°	53°	3.5°	N.O.	802XR-HF7
					N.C.	802XR-HC7
Clockwise	0.167 N•m (1.5 lb•in)	17°	42°	10°	N.O.	802XR-A3F7
					N.C.	802XR-A3C7
	0.51 N•m (4.5 lb•in)	7°	50°	3.5°	N.O.	802XR-H1F7
					N.C.	802XR-H1C7
Counterclockwise	0.167 N•m (1.5 lb•in)	17°	42°	10°	N.O.	802XR-A4F7
					N.C.	802XR-A4C7
	0.51 N•m (4.5 lb•in)	7°	50°	3.5°	N.O.	802XR-H2F7
					N.C.	802XR-H2C7
Clockwise Lever cannot move counterclockwise	0.45 N•m (4 lb•in)	20°	91°	11°	N.O.	802XR-L1F7
N.C.					802XR-L1C7	
Counterclockwise Lever cannot move clockwise	0.45 N•m (4 lb•in)	20°	91°	11°	N.O.	802XR-L2F7
N.C.					802XR-L2C7	

Approximate Dimensions [mm (in.)]

Approximate Shipping Wt. 0.9 kg (2 lbs)



Mounting Hole Dimensions

2—0.265 Dia. through hole with 0.500 Dia. C'Bore 0.25 in. deep for front mounting.

2—1/4-20 Tapped holes 0.56 in. deep for rear mounting.

2—1/4-20 Tapped holes 0.5 in. deep for side mounting.

Note: For operating head and lever assembly dimensions not shown, see page 5-130. Conduit pipe opening 1/2 in. NPT.

Levers—See page 5-130 for a complete listing of operating levers.