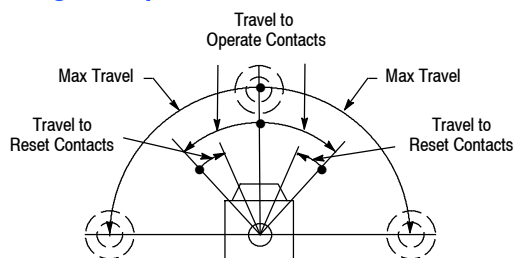


802MC Lever Type • Spring Return

Corrosion-Resistant Pre-Wired—Factory Sealed Switches

Range of Operation



Complete Switch Without Lever



Operator Head Only



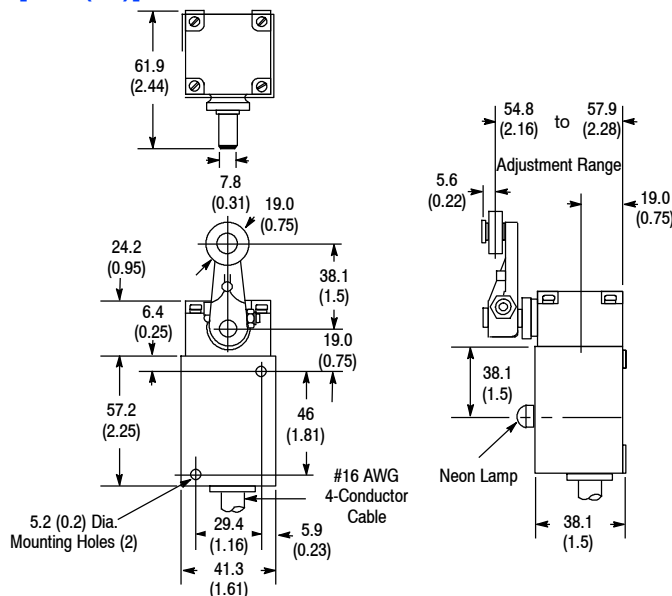
Base Only

Product Selection

No. of Circuits	Lever Movement vs. Contact Operation	Torque to Operate (Max)	Travel to Operate Contacts (Max)	Max Travel	Travel to Reset Contacts (Max)	Cat. No.		
						Complete Switch w/o Lever ①	Operator Head Only	Switch Only ①
2	Clockwise or Counterclockwise	0.34 N•m (3 lb•in)	15°	86°	6°	802MC-AY5	802MC-AX	802MC-XY5
	Clockwise					802MC-A1Y5	802MC-A1X	
	Counterclockwise					802MC-A2Y5	802MC-A2X	

① The standard length of STC cable is 1.52 m (5 ft). For other lengths, see Modifications and Accessories.

Approximate Dimensions [mm (in.)]



Levers—See page 5-130 for a complete listing of operating levers.

Wiring Diagrams—See page 5-32.

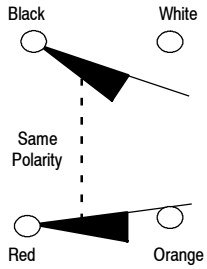
Modifications and Accessories—See page 5-33.

802MC Wiring Diagrams

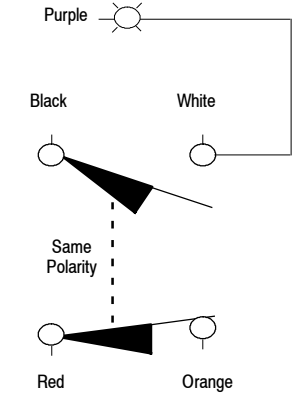
Corrosion-Resistant Pre-Wired—Factory Sealed Switches

Cable Models

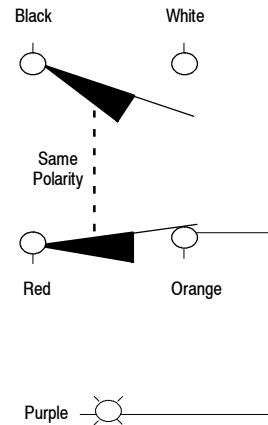
(See Applicable Codes and Laws)



Cable Models with Indicating Light

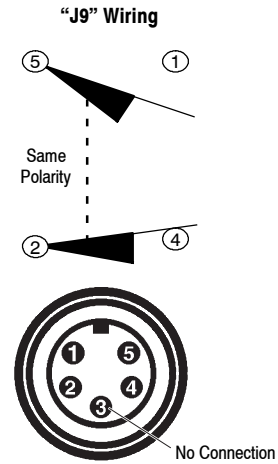
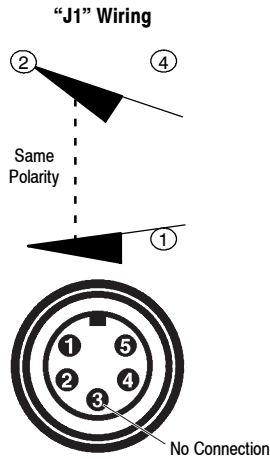


Light Wired to N.O. (White) Wire



Light Wired to N.C. (Orange) Wire

5-Pin Mini-Type Receptacle



5-Pin Mini-Type Receptacle with Indicating Light

