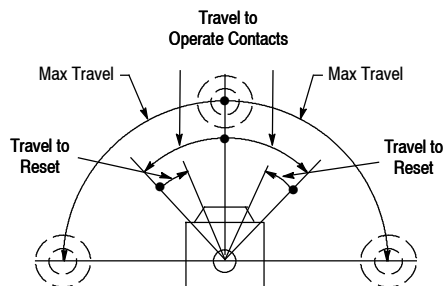


# 802M Lever Type • Spring Return

Pre-Wired—Factory Sealed Switches

## Range of Operation



Complete Switch Without Lever



Operator Head Only



Switch Body Only

## Product Selection

No. of Circuits	Lever Movement vs. Contact Operation	Torque to Operate (Max.)	Travel to Operate Contacts (Max.)	Max Travel	Travel to Reset Contacts (Max.)	Cat. No.		
						Complete Switch w/o Lever ❶	Operator Head Only	Switch Body Only ❶
2	Clockwise or Counterclockwise	0.34 N•m (3 lb•in)	15°	86°	6°	<b>802M-AY5</b>	<b>802M-AX</b>	802M-XY5
		0.56 N•m (5 lb•in)	8°		4°	<b>802M-HY5</b>	<b>802M-HX</b>	
	Clockwise	0.34 N•m (3 lb•in)	15°		6°	802M-A1Y5	802M-A1X	
		0.56 N•m (5 lb•in)	8°		4°	802M-H1Y5	802M-H1X	
	Counterclockwise	0.34 N•m (3 lb•in)	15°		6°	802M-A2Y5	802M-A2X	
		0.56 N•m (5 lb•in)	8°		4°	802M-H2Y5	802M-H2X	
4	Clockwise or Counterclockwise	0.34 N•m (3 lb•in)	15°	86°	6°	<b>802M-ATY5</b>	<b>802M-AX</b>	802M-XTY5
		0.56 N•m (5 lb•in)	8°		4°	802M-HTY5	802M-HX	
	Clockwise	0.34 N•m (3 lb•in)	15°		6°	802M-A1TY5	802M-A1X	
		0.56 N•m (5 lb•in)	8°		4°	802M-H1TY5	802M-H1X	
	Counterclockwise	0.34 N•m (3 lb•in)	15°		6°	802M-A2TY5	802M-A2X	
		0.56 N•m (5 lb•in)	8°		4°	802M-H2TY5	802M-H2X	

❶ The standard length of STO cable is 1.52 m (5 ft). For other lengths see Modifications and Accessories.

**Levers**—See page 5-130 for a complete listing of operating levers.

**Wiring Diagrams**—See page 5-24.

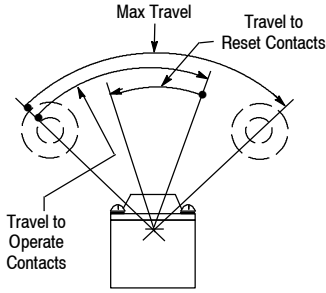
**Modifications and Accessories**—See page 5-27.

# Limit Switches

## 802M Lever Type • Maintained Contact

### Pre-Wired—Factory Sealed Switches

#### Range of Operation



Complete Switch Without Lever



Operator Head Only



Switch Body Only

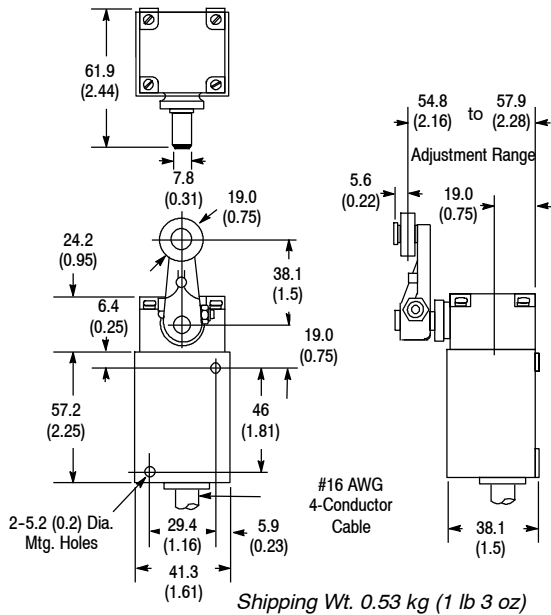
#### Product Selection

No. of Circuits	Lever Movement vs. Contact Operation	Torque to Operate (Max.)	Travel to Operate Contacts (Max.) <sup>Ⓢ</sup>	Max Travel <sup>Ⓢ</sup>	Travel to Reset Contacts (Max.)	Cat. No.		
						Complete Switch w/o Lever <sup>Ⓢ</sup>	Operator Head Only	Switch Body Only <sup>Ⓢ</sup>
2	Clockwise or Counterclockwise 	0.31 N•m (2.75 lb•in)	75°	87°	35°	802M-AMY5	802M-AMX	802M-XY5
4	Clockwise or Counterclockwise 					802M-AMTY5		802M-XTY5

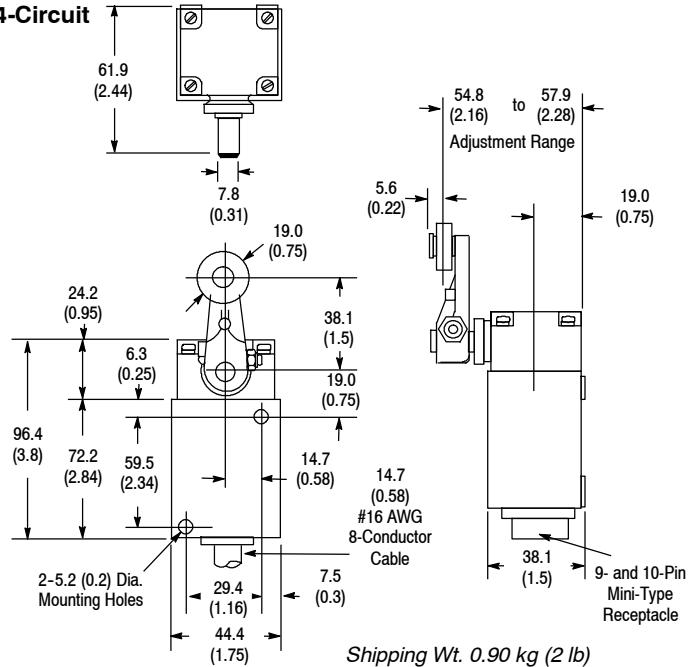
- Ⓢ The standard length of STO cable is 1.52 m (5 ft). For other lengths see Modifications and Accessories.
- Ⓢ From one maintained position to the other.

#### Approximate Dimensions [mm (in.)]

##### 2-Circuit



##### 4-Circuit



**Levers**—See page 5-130 for a complete listing of operating levers.

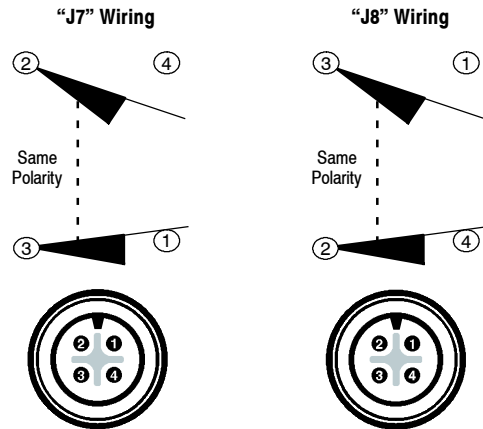
**Wiring Diagrams**—See page 5-24.

**Modifications and Accessories**—See page 5-27.

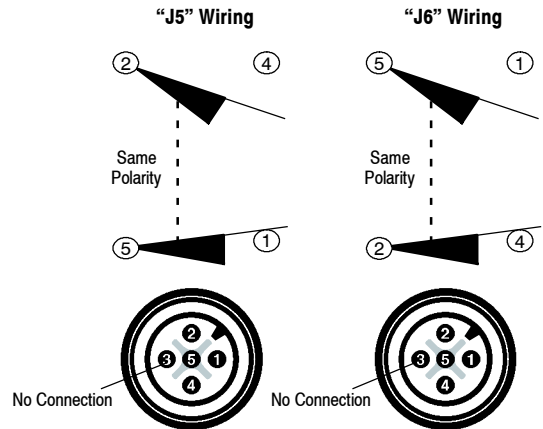
# 802M Wiring Diagrams for 2-Circuit Models

Pre-Wired—Factory Sealed Switches

## 4-Pin Micro-Type Receptacle (DC only)



## 5-Pin Micro-Type Receptacle (DC only)



## 5-Pin Micro-Type Receptacle with One Indicating Light (DC only)

