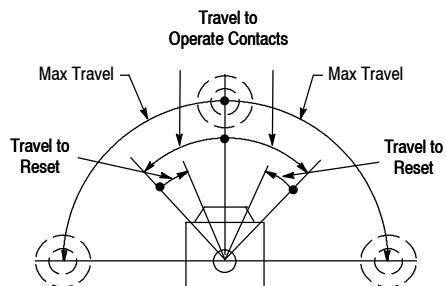


# 802M Lever Type • Spring Return

Pre-Wired—Factory Sealed Switches

## Range of Operation



Complete Switch Without Lever



Operator Head Only



Switch Body Only

## Product Selection

| No. of Circuits | Lever Movement vs. Contact Operation | Torque to Operate (Max.) | Travel to Operate Contacts (Max.) | Max Travel | Travel to Reset Contacts (Max.) | Cat. No.                    |                    |                    |
|-----------------|--------------------------------------|--------------------------|-----------------------------------|------------|---------------------------------|-----------------------------|--------------------|--------------------|
|                 |                                      |                          |                                   |            |                                 | Complete Switch w/o Lever ❶ | Operator Head Only | Switch Body Only ❶ |
| 2               | Clockwise or Counterclockwise        | 0.34 N•m (3 lb•in)       | 15°                               | 86°        | 6°                              | <b>802M-AY5</b>             | <b>802M-AX</b>     | 802M-XY5           |
|                 |                                      | 0.56 N•m (5 lb•in)       | 8°                                |            | 4°                              | <b>802M-HY5</b>             | <b>802M-HX</b>     |                    |
|                 | Clockwise                            | 0.34 N•m (3 lb•in)       | 15°                               |            | 6°                              | 802M-A1Y5                   | 802M-A1X           |                    |
|                 |                                      | 0.56 N•m (5 lb•in)       | 8°                                |            | 4°                              | 802M-H1Y5                   | 802M-H1X           |                    |
|                 | Counterclockwise                     | 0.34 N•m (3 lb•in)       | 15°                               |            | 6°                              | 802M-A2Y5                   | 802M-A2X           |                    |
|                 |                                      | 0.56 N•m (5 lb•in)       | 8°                                |            | 4°                              | 802M-H2Y5                   | 802M-H2X           |                    |
| 4               | Clockwise or Counterclockwise        | 0.34 N•m (3 lb•in)       | 15°                               | 86°        | 6°                              | <b>802M-ATY5</b>            | <b>802M-AX</b>     | 802M-XTY5          |
|                 |                                      | 0.56 N•m (5 lb•in)       | 8°                                |            | 4°                              | 802M-HTY5                   | 802M-HX            |                    |
|                 | Clockwise                            | 0.34 N•m (3 lb•in)       | 15°                               |            | 6°                              | 802M-A1TY5                  | 802M-A1X           |                    |
|                 |                                      | 0.56 N•m (5 lb•in)       | 8°                                |            | 4°                              | 802M-H1TY5                  | 802M-H1X           |                    |
|                 | Counterclockwise                     | 0.34 N•m (3 lb•in)       | 15°                               |            | 6°                              | 802M-A2TY5                  | 802M-A2X           |                    |
|                 |                                      | 0.56 N•m (5 lb•in)       | 8°                                |            | 4°                              | 802M-H2TY5                  | 802M-H2X           |                    |

❶ The standard length of STO cable is 1.52 m (5 ft). For other lengths see Modifications and Accessories.

**Levers**—See page 5-130 for a complete listing of operating levers.

**Wiring Diagrams**—See page 5-24.

**Modifications and Accessories**—See page 5-27.

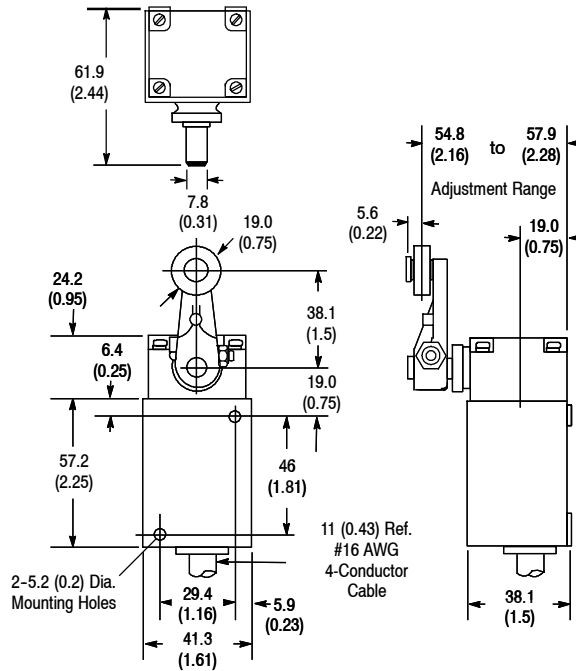
## Limit Switches

# 802M Lever Type • Spring Return

Pre-Wired—Factory Sealed Switches

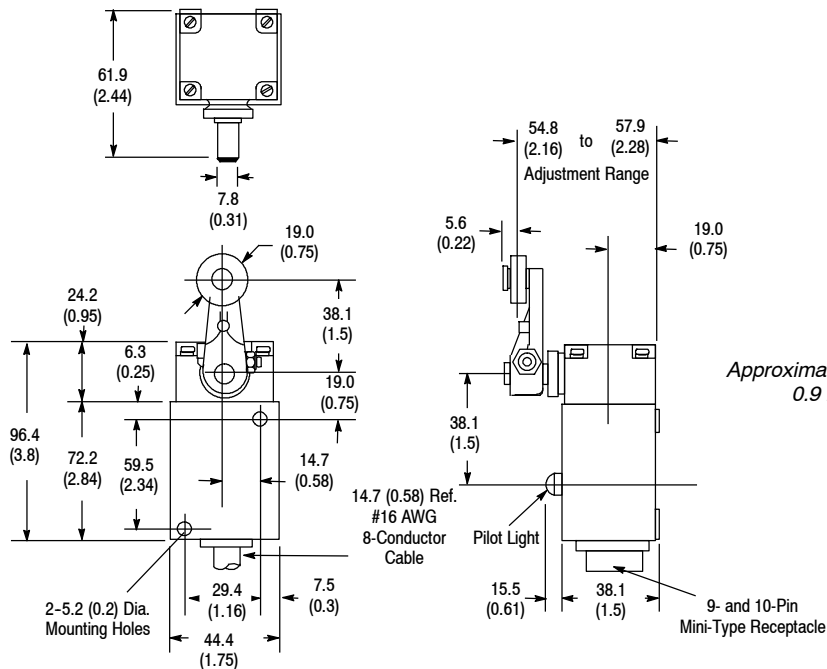
### Approximate Dimensions [mm (in.)]

#### 2-Circuit



Shipping Wt.  
1lb 0.53 kg (3 oz)

#### 4-Circuit



Approximate Shipping Wt.  
0.9 kg (2 lb)

**Note:** Mounting foot adaptor as shown on page 5-23 is for use with 2-circuit 802M type switches only.

**Levers**—See page 5-130 for a complete listing of operating levers.

**Wiring Diagrams**—See page 5-24.

**Modifications and Accessories**—See page 5-27.