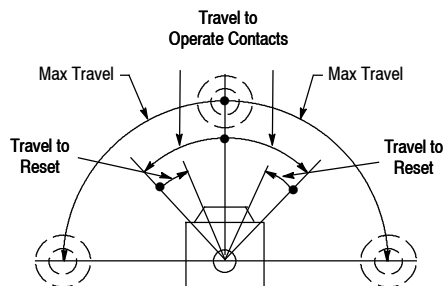


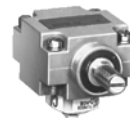
802M Lever Type • Spring Return

Pre-Wired—Factory Sealed Switches

Range of Operation



Complete Switch Without Lever



Operator Head Only



Switch Body Only

Product Selection

No. of Circuits	Lever Movement vs. Contact Operation	Torque to Operate (Max.)	Travel to Operate Contacts (Max.)	Max Travel	Travel to Reset Contacts (Max.)	Cat. No.		
						Complete Switch w/o Lever ❶	Operator Head Only	Switch Body Only ❶
2	Clockwise or Counterclockwise	0.34 N•m (3 lb•in)	15°	86°	6°	802M-AY5	802M-AX	802M-XY5
		0.56 N•m (5 lb•in)	8°		4°	802M-HY5	802M-HX	
	Clockwise	0.34 N•m (3 lb•in)	15°		6°	802M-A1Y5	802M-A1X	
		0.56 N•m (5 lb•in)	8°		4°	802M-H1Y5	802M-H1X	
	Counterclockwise	0.34 N•m (3 lb•in)	15°		6°	802M-A2Y5	802M-A2X	
		0.56 N•m (5 lb•in)	8°		4°	802M-H2Y5	802M-H2X	
4	Clockwise or Counterclockwise	0.34 N•m (3 lb•in)	15°	86°	6°	802M-ATY5	802M-AX	802M-XTY5
		0.56 N•m (5 lb•in)	8°		4°	802M-HTY5	802M-HX	
	Clockwise	0.34 N•m (3 lb•in)	15°		6°	802M-A1TY5	802M-A1X	
		0.56 N•m (5 lb•in)	8°		4°	802M-H1TY5	802M-H1X	
	Counterclockwise	0.34 N•m (3 lb•in)	15°		6°	802M-A2TY5	802M-A2X	
		0.56 N•m (5 lb•in)	8°		4°	802M-H2TY5	802M-H2X	

❶ The standard length of STO cable is 1.52 m (5 ft). For other lengths see Modifications and Accessories.

Levers—See page 5-130 for a complete listing of operating levers.

Wiring Diagrams—See page 5-24.

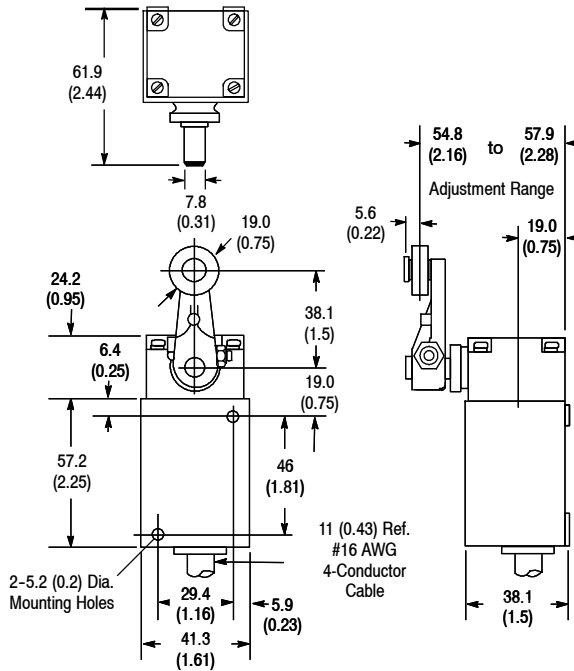
Modifications and Accessories—See page 5-27.

802M Lever Type • Spring Return

Pre-Wired—Factory Sealed Switches

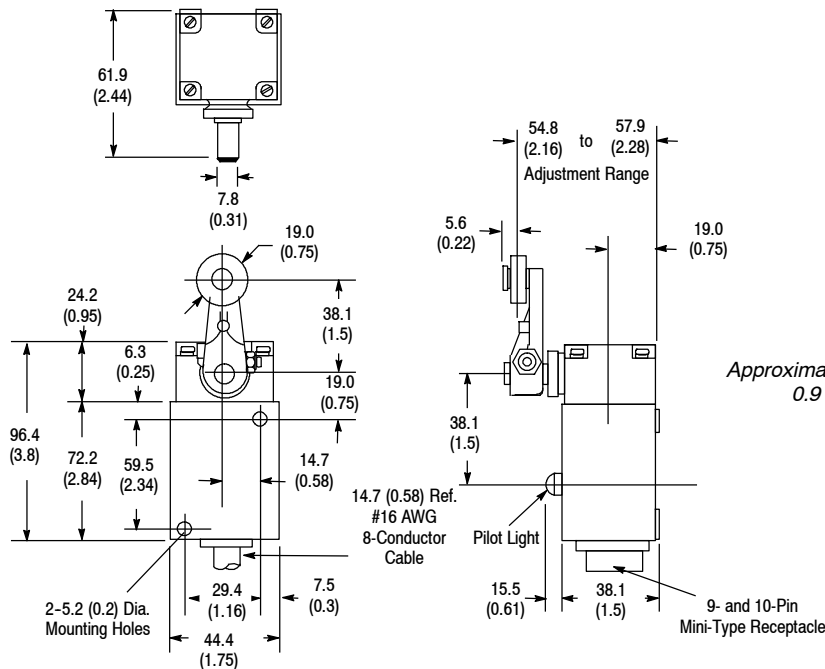
Approximate Dimensions [mm (in.)]

2-Circuit



Shipping Wt.
1lb 0.53 kg (3 oz)

4-Circuit



Approximate Shipping Wt.
0.9 kg (2 lb)

Note: Mounting foot adaptor as shown on page 5-23 is for use with 2-circuit 802M type switches only.

Levers—See page 5-130 for a complete listing of operating levers.

Wiring Diagrams—See page 5-24.

Modifications and Accessories—See page 5-27.

802M Modifications

Pre-Wired—Factory Sealed Switches

24V DC Switches

All two-circuit 802M limit switches are available with silver-nickel contacts rated for 24V DC applications. To order a switch rated for 24V DC use, insert the letter **Z** before the cable or connector designation. Example: 802M-AZY5 is a 24V DC version of the 802M-AY5. The use of the 24V DC micro connector option or 24V DC indicating light option require the switch be rated for 24V DC operation.

Extended Cable Lengths

The factory installed type STO cable is normally supplied in 1.52 m (5 ft) lengths. Extended cable lengths are available in multiples of four feet. To order, replace the suffix **Y5** in the cat. no. with the appropriate suffix from the table below. Example: To order a lever type two-circuit spring return switch with 1.83 m (8 ft) of STO cable the cat. no. would be 802M-AY8.

Additional Cable Length

Modification	Cat. Number Suffix
1.83 m (8 ft) Cable	Y8
3.66 m (12 ft) Cable	Y12
4.78 m (16 ft) Cable	Y16

5-Pin Mini-Type Receptacle^①
(2-Circuit Models Only)

802M with Mini-Type Receptacle
2-Circuit

To order a Bulletin 802M pre-wired limit switch with a 5-pin mini connector in place of the 1.52 m (5 ft) of "STO"^② cable, replace the **Y5** in the cat. no. with the suffix **J1** or **J9** depending upon the wiring configuration required. Maximum voltage rating for this receptacle is 250V AC.

An appropriate female connector with cable (889N-F5AFC-6F) is available on page 8-4 in Connection Systems.

9-Pin Mini-Type Receptacle^①
(4-Circuit Models without
Indicator Lights Only)

802M with Mini-Type Receptacle
4-Circuit

To order a Bulletin 802M pre-wired limit switch with a 9-pin mini connector in place of the 1.52 m (5 ft) of STO cable, replace the **Y5** in the cat. no. with the suffix **J1**. Maximum voltage rating for this receptacle is 250V AC.

An appropriate female connector with cable (889N-F9AF-2) is available on page 8-14 in Connection Systems.

10-Pin Mini-Type Receptacle^①
(4-Circuit Models with 2
Indicating Lights Only)

To order a Bulletin 802M pre-wired limit switch with a 10-pin mini connector and two indicating lights, replace the **Y5** in the cat. no. with the suffix **J4**. Maximum voltage rating for this receptacle is 250V AC. Also, specify the indicating lights per the table on page 5-28.

Example: Cat. No. 802M-ATY5 with mini-connector and (2) 120V AC indicating lights wired to one side of each N.O. contact would be Cat. No. 802M-ATJ4L1F.

An appropriate female connector with cable (889N-F10AF-2) is available on page 8-14 in Connection Systems.

4-Pin Micro-Type Receptacle
(2-Circuit 24V DC Models Only)

802M with Micro-Type
Receptacle—2-Circuit

To order a Bulletin 802M pre-wired limit switch with a 4-pin micro connector in place of the 1.52 m (5 ft) of "STO"^② cable, replace the **Y5** in the cat. no. with the suffix **J7** or **J8** depending upon the wiring configuration required. This option requires that the switch is rated 24V DC.

An appropriate female connector with cable (889D-F4AC-2) is available on page 8-16 in Connection Systems.

5-Pin Micro-Type Receptacle
(2-Circuit 24V DC Models Only)

To order a Bulletin 802M pre-wired limit switch with a 5-pin micro connector in place of the 1.52 m (5 ft) of "STO"^② cable, replace the **Y5** in the cat. no. with the suffix **J5** or **J6** depending upon the wiring configuration required. This option requires that the switch is rated 24V DC.

An appropriate female connector with cable (889D-F5AC-2) is available on page 8-16 in Connection Systems.

① A 5-pin, 9-pin or 10-pin plug-in receptacle is supplied to facilitate retrofitting existing installations. The normal ground wire pin is not required and is not connected inside the switch.

② STO is a common identification of this cable. The more complete identification of the cable used on the Bulletin 802M is STOOW-A which incorporates an oil resistant jacket and conductor insulation, for indoor and outdoor use.