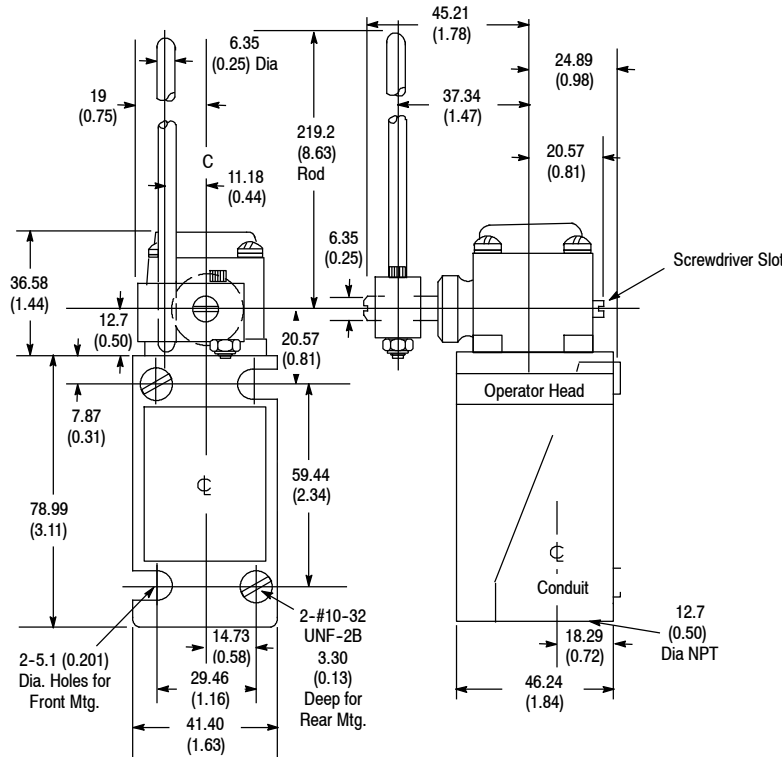


**Approximate Dimensions [mm (in.)]**

Dimensions are not intended to be used for manufacturing purposes.



802G-GP with 802G-W10 Lever  
Approximate Shipping Wt. 1.5lbs (680g)

**Modification for Neon Indicating Light**

The Bulletin 802G gravity return limit switch can be supplied with a neon indicating light. To order, add the letter “N” for 120V AC 50/60 Hz or “N5” for 240V AC 50/60 Hz. **Example:** Catalog number **802G-GP**, becomes catalog number **802G-GPN**.

The indicating light is to be internally connected by the user to two isolated terminals in the base assembly allowing complete flexibility in the connection of the light. Switches with an indicating light have a contact rating of NEMA B300.

**Operating Levers**

Description	Cat. No.
6.35 mm (0.25 in.) Steel Rod, Adjustable to 219.0 mm (8.625 in.) Length	802G-W10
3.18 mm (0.125 in.) Steel Rod, Adjustable to 219.0 mm (8.625 in.) Length	802G-W10A
6.35 mm (0.25 in.) Nylon Rod, Adjustable to 219.0 mm (8.625 in.) Length	802G-W11