



Bulletin 700-HB — Square Base Relay

- 15 A contact rating
- DPDT, 3PDT
- Blade-style quick connect terminals
- Standard ON/OFF flag indicator
- Options: LED, push-to-rest, and manual override
- Faston 187 (4.8 x 0.5 mm)

Table of Contents

Product Selection this page

Accessories..... 9-22

Specifications..... 9-23

Approximate Dimensions..... 9-25

Product Selection

Bulletin 700-HB Square Base Relay with Blade Style Quick Connect/Solder Terminations — Mechanical ON/OFF Indicator Included

	Description	Contact Rating	Wiring Diagrams		Coil Voltage	Cat. No.*§
			U.S./Canada	International		
 DPDT 2-Pole 2 Form C Single AgCdO Contact Sockets	15 A B300	 + Input -	 + U -	6V AC	700-HB32A06	
				12V AC	700-HB32A12	
				24V AC	700-HB32A24	
				120V AC	700-HB32A1	
				240V AC	700-HB32A2	
				6V DC	700-HB32Z06	
				12V DC	700-HB32Z12	
				24V DC	700-HB32Z24	
				48V DC	700-HB32Z48	
				110V DC	700-HB32Z1	
3PDT 3-Pole 3 Form C Single AgCdO Contact Sockets	15 A B300	 + Input -	 + U -	6V AC	700-HB33A06	
				12V AC	700-HB33A12	
				24V AC	700-HB33A24	
				120V AC	700-HB33A1	
				240V AC	700-HB33A2	
				6V DC	700-HB33Z06	
				12V DC	700-HB33Z12	
				24V DC	700-HB33Z24	
				48V DC	700-HB33Z48	
				110V DC	700-HB33Z1	

* LED Option: Add suffix **(-4)** to the selected Bulletin 700-HB Relay Cat. No., except for the 240V AC Units, add **(-4L)**.
 § Push-to-test, Manual Override, and LED Option: Add suffix **(-3-4)** to the selected Bulletin 700-HB Relay Cat. No., except for the 240V AC units, add **(-3-4L)**.
 § Push-to-test and Manual Override option: Add suffix **(-3)** to the selected Bulletin 700-HB relay.

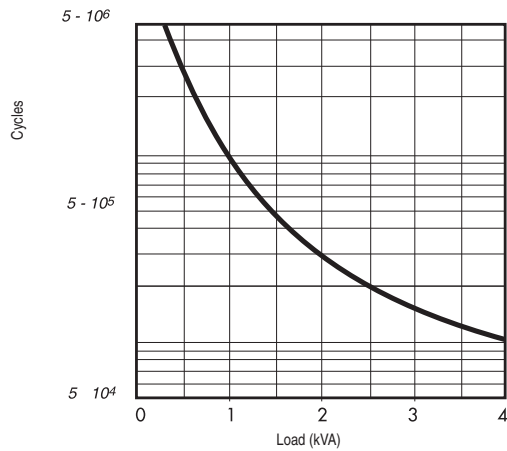
Specifications

Cat. No. 700-HB...						
Electrical Ratings						
Pilot Duty Rating*	NEMA B300					
Rated Thermal Current (I_{th})	15 A – 120V, 240V					
Rated Insulation Voltage (U _i)	250V IEC-300V UL/CSA					
Contacts	Inductive	Make		Break		Hp
		▶ ◀		◀ ▶		
		2 -Pole	3 -Pole	2 -Pole	3 -Pole	
	120V AC	60 A	30 A	6 A	3 A	3/4
	240V AC	30 A	15 A	3 A	1.5 A	2
	General Purpose	15 A, 240V AC				
	Resistive	15 A, 30V DC				
Min. Low Energy Permissible Load	1000 mW (10V, 10 mA)					
Permissible Coil Voltage Variation	80...110% of Nominal Voltage at 50 Hz					
	80...110% of Nominal Voltage at 60 Hz					
	80...110% of Nominal Voltage at DC					
Coil Consumption ±10%	AC Coils	50 Hz		60 Hz		
	Inrush	3.3 VA		2.85 VA		
	Sealed	2.2 VA		1.9 VA		
	DC Coils	1.3 W				
Max. Allowable Leakage	25% of VA					
	10% of W					
Max. Contact Resistance	50 mΩ					
Design Specification/Test Requirements Electrical						
Dielectric Withstand Voltage						
Pole-to-Pole	1500V					
Contact to Coil	6000V					
Contact to Frame	4000V					
Mechanical						
Degree of Protection (Open Type) IEC 529	IP 40					
Mechanical Life Cycles (AC/DC)	> 10 x 10 ⁶ /30 x 10 ⁶					
Switching Frequency Operations	3600/HR					
Coil Voltages	See Overview/Product Selection					
Operating Time (ms)	Pickup	20 ms				
	Dropout	4 ms				
Maximum Operating Rate	4 Ops/s					
Vibration	Endurance	5 G				
	Operational	1.5 G				
Shock	Endurance	50 G				
	Operational	15 G				
Environmental						
Temperature	Operating	AC/DC		-40...+70 °C		
	Storage	AC/DC		-40...+100 °C		
Altitude	2000 m (6560 ft)					
Construction						
Insulating Material	Molded High Dielectric Material					
Enclosure	Transparent Dust Cover					
Contact Material	AgCdO					
Terminal Markings on Socket	In accordance with EN50 0005					
Sockets	700-HN153, -HN154					
Certifications	cURus Recognized (File No. E3125, Guide NLDX2/NLDX8), cULus Listed when used with Bulletin 700-HN sockets noted above (File No. E3125, Guide NLDX/NLDX7), CE Marked, CSA Certified, UR Certified (File No. 229473)					
Standards	UL508, CSA C22.2 No. 14, EN 61810-1, EN 60255-23					

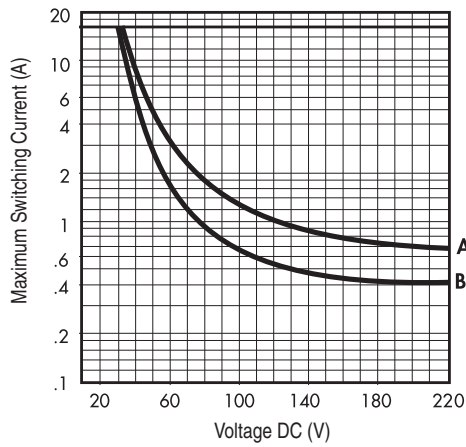
* Performance Data – See this catalog, Important- 3.

* NEMA Rating Chart is in publication 700-SG003*

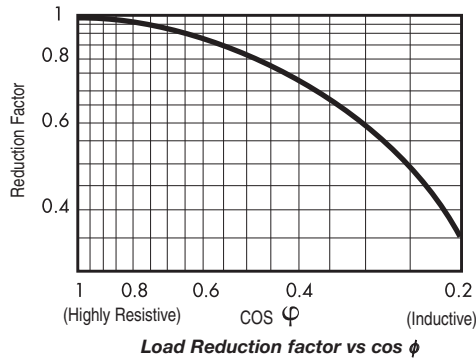
Technical Data



Contact life vs AC1 load at 600 cycles/h.



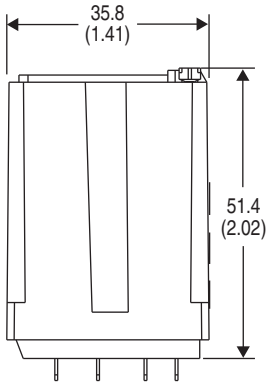
Breaking capacity for DC1 load at 600 cycles/h.
 Load applied to 1 contact.
 A = for N.O. types
 B = other types



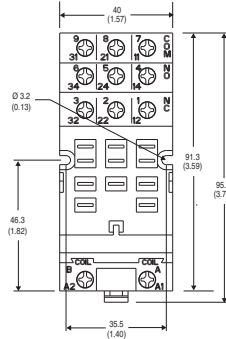
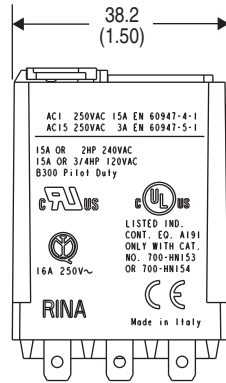
Load Reduction factor vs cos ϕ

Approximate Dimensions

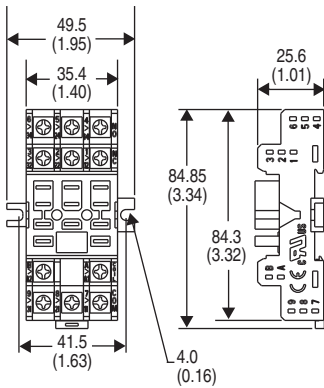
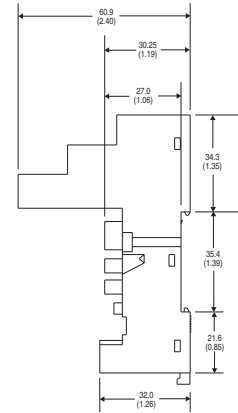
Approximate Dimensions are shown in millimeters (inches). Approximate Dimensions are not intended to be used for manufacturing purposes.



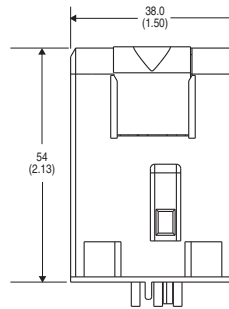
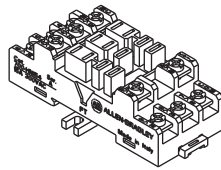
Bulletin 700-HB Relay



Cat. No. 700-HN153
Wire Size: 2 x 2.5 mm²
Single Wire – Up to #12 AWG
Double Wire – 2 x 2.5 mm² (#2–14 AWG... #2–20 AWG)
(Either Solid or Stranded)
Strip Length: 9 mm (3/8 in.) – Torque: 0.8 N•m (7 lb•in)



Cat. No. 700-HN154
Wire Size: 2 x 2.5 mm²
Single Wire – Up to #12 AWG
Double Wire – 2 x 2.5 mm² (#2–14 AWG... #2–20 AWG)
(Either Solid or Stranded)
Strip Length: 9 mm (3/8 in.) – Torque: 0.8 N•m (7 lb•in)



Cat. No. 700-HT3
Wire Size: 2 x 1.5 mm² (#2–16 AWG... #1–20 AWG)
(Either Solid or Stranded)
Strip Length: 9 mm (3/8 in.) – Torque: 0.8 N•m (7 lb•in)

