



Bulletin 598 — General Purpose Enclosures

- Type 3R, 4, 4X, 12, and 13 rainproof, watertight, corrosion resistant, and dusttight, IP66 protection
- Designed for use as automation control box, electrical control housing, and terminal wiring box in industrial and commercial applications
- Available with optional plastic or metal mounting plates
- Provision for mounting using either AB or DIN Rail
- Enclosure can accommodate both panel mount and rail mount terminal blocks
- Designed for use in both indoor and outdoor applications

Table of Contents

Specifications..... this page
 Product Selection 1-246
 Accessories..... 1-253
 Approximate
 Dimensions..... 1-258

Standards Compliance

UL 508A
 CSA C22.2, No. 14

Certifications

cULus Listed (File No. E54866;
 Guide No. NITW, NITW7)
 CE Marked



Technical Specifications

Product Certification	
Approvals/Certifications	cULus, CE
Degree of Protection	Type 3R, 4, 4X, 12, and 13, IP66
Environmental	
Storage Temperature Range	-40...+75 °C (-40...+158 °F)
Operating Temperature Range	-40...+55 °C (-40...+131 °F)
Material	
Enclosure — Solid Base & Cover	Thermoplastic polyester blend, UL 94 5VA
Enclosure — Clear Cover	Polycarbonate, UL 94 5VA
Gasket	Foam-in-place polyurethane
Plastic Mounting Plate	ABS
Metal Mounting Plate	Steel plus zinc with chromate plating
Mounting Plate Hardware (included with enclosure)	Stainless Steel
Mounting Provision	Brass
External Mounting Bracket	Stainless Steel
Hinges & Latches	Stainless Steel

Note: In applications where there is shock and vibration, use of a metal mounting plate is recommended.

Bulletin 598
General Purpose Enclosures
 Product Selection

1



Cat. No. 598-BS533



Cat. No. 598-BS733



Cat. No. 598-BS933

Enclosure	Cat. No.	Pkg. Quantity	Cat. No.	Pkg. Quantity	Cat. No.	Pkg. Quantity
	598-BS533	1	598-BS733	1	598-BS933	1
Outside Dimensions* (H x W x D)	130 x 80 x 85 mm (5.12 x 3.15 x 3.35 in.)		180 x 80 x 85 mm (7.09 x 3.15 x 3.35 in.)		250 x 80 x 85 mm (9.84 x 3.15 x 3.35 in.)	
Base Depth	50 mm (1.97 in.)		50 mm (1.97 in.)		50 mm (1.97 in.)	
Cover Depth	35 mm (1.38 in.)		35 mm (1.38 in.)		35 mm (1.38 in.)	
Cover Screw Material	Glass-reinforced nylon		Glass-reinforced nylon		Glass-reinforced nylon	
Recommended Tightening Torque	1.0...1.2 N•m (9...11 lb•in)		1.0...1.2 N•m (9...11 lb•in)		1.0...1.2 N•m (9...11 lb•in)	
Approx. Ship Weight	271 g (0.60 lb)		357 g (0.79 lb)		435 g (0.96 lb)	
Plastic Mounting Plate	Cat. No.	Pkg. Quantity	Cat. No.	Pkg. Quantity	Cat. No.	Pkg. Quantity
	598-PP53	1	598-PP73	1	598-PP93	1
Outside Dimension* (H x W x Thickness)	116 x 68 x 3.5 mm (4.57 x 2.68 x 0.14 in.)		165.5 x 68 x 3.5 mm (6.52 x 2.68 x 0.14 in.)		235 x 68 x 3.5 mm (9.25 x 2.68 x 0.14 in.)	
Recommended hardware for installing components	M4 (#8)		M4 (#8)		M4 (#8)	
Approx. Ship Weight	22.4 g (0.05 lb)		32.0 g (0.07 lb)		45.9 g (0.10 lb)	
Metal Mounting Plate	Cat. No.	Pkg. Quantity	Cat. No.	Pkg. Quantity	Cat. No.	Pkg. Quantity
	598-PM53	1	598-PM73	1	598-PM93	1
Outside Dimension* (H x W x Thickness)	116 x 68 x 1.6 mm (4.57 x 2.68 x 0.06 in.)		165.5 x 68 x 1.6 mm (6.52 x 2.68 x 0.06 in.)		235 x 68 x 1.6 mm (9.25 x 2.68 x 0.06 in.)	
Approx. Ship Weight	85.8 g (0.19 lb)		124.8 g (0.28 lb)		181 g (0.40 lb)	

Note: In applications where there is shock and vibration, use of metal mounting plate is recommended.

* Dimensions are not intended to be used for manufacturing purposes.

Bulletin 598
Junction Boxes
 Product Selection

1



Cat. No. 598-BS733



Cat. No. 598-BS933



Cat. No. 598-BS885

Enclosure	Cat. No.	Pkg. Quantity	Cat. No.	Pkg. Quantity	Cat. No.*	Pkg. Quantity
	598-BS733	1	598-BS933	1	598-BS885	1
Outside Dimensions* (H x W x D)	180 x 80 x 85 mm (7.09 x 3.15 x 3.35 in.)		250 x 80 x 85 mm (9.84 x 3.15 x 3.35 in.)		190 x 190 x 130 mm (7.48 x 7.48 x 5.12 in.)	
Base Depth	50 mm (1.97 in.)		50 mm (1.97 in.)		98 mm (3.86 in.)	
Cover Depth	35 mm (1.38 in.)		35 mm (1.38 in.)		30 mm (1.18 in.)	
Cover Screw Material	Glass-reinforced nylon		Glass-reinforced nylon		Glass-reinforced nylon	
Recommended Tightening Torque	1.0...1.2 N•m (9...11 lb•in)		1.0...1.2 N•m (9...11 lb•in)		1.2...1.7 N•m (11...15 lb•in)	
Approx. Ship Weight	357 g (0.79 lb)		435 g (0.96 lb)		801.6 g (1.77 lb)	
Plastic Mounting Plate	Cat. No.	Pkg. Quantity	Cat. No.	Pkg. Quantity	Cat. No.	Pkg. Quantity
	598-PP73	1	598-PP93	1	598-PP88	1
Outside Dimension* (H x W x Thickness)	165.5 x 68 x 3.5 mm (6.52 x 2.68 x 0.14 in.)		235 x 68 x 3.5 mm (9.25 x 2.68 x 0.14 in.)		160 x 160 x 4 mm (6.3 x 6.3 x 0.16 in.)	
Recommended hardware for installing components	M4 (#8)		M4 (#8)		M4 (#8)	
Approx. Ship Weight	32.0 g (0.07 lb)		45.9 g (0.10 lb)		98.5 g (0.22 lb)	
Metal Mounting Plate	Cat. No.	Pkg. Quantity	Cat. No.	Pkg. Quantity	Cat. No.	Pkg. Quantity
	598-PM73	1	598-PM93	1	598-PM88	1
Outside Dimension* (H x W x Thickness)	165.5 x 68 x 1.6 mm (6.52 x 2.68 x 0.06 in.)		235 x 68 x 1.6 mm (9.25 x 2.68 x 0.06 in.)		161 x 161 x 1.6 mm (6.34 x 6.34 x 0.06 in.)	
Approx. Ship Weight	124.8 g (0.28 lb)		181 g (0.40 lb)		319.3 g (0.70 lb)	












Note: In applications where there is shock and vibration, use of metal mounting plate is recommended.

* Dimensions are not intended to be used for manufacturing purposes.

* For Cat. No. 598-BS885 clear & hinged covers, see page 1-247.

Terminal Block Compatibility

Note: The table below lists suggested types of terminal blocks suitable for mounting on the plastic grid in the junction box. Items in table are not pre-assembled and are sold separately.

		598-BS332	598-BS632	598-BS533	598-BS733	598-BS933	598-BS885
Junction Box							
	Mounting Options for use with Panel Mount Terminal Blocks	Molded-In	Molded-In	598-PP53	598-PP73	598-PP93	598-PP88
Types of Terminal Blocks Suitable for Mounting on Plastic Grid in Junction Box		Maximum Number of Poles (Approximation)					
Panel Mount Blocks with predefined set of poles	 Barrier Strips ⚙️	2	8	4	8	12	12
	 1492-EC85 & 1492-ED103	—	—	5	5	5	5
	 1492-HC6	—	—	6	6	6	6
	 1492-HJ86 & 1492-HJ812	—	12	6	12	12	12
Panel Mount Interlocking Blocks	 1492-15T & 1492-25T	2	6	4	7	12	7
		—	5	3	5	8	6
Rail Mount Terminal Blocks*	1492-C...	—	—	7	12	18	14
	1492-F...	—	—	7	12	18	14
	1492-H...	—	—	14	24	36	28
	1492-W...	—	—	14	24	36	28
	1492-J...	—	—	14	24	36	28
	1492-L...	—	—	14	24	36	28

* Requires AB or DIN Rail for mounting

⚙️ For barrier strip with typical 0.563 in. pitch spacings.



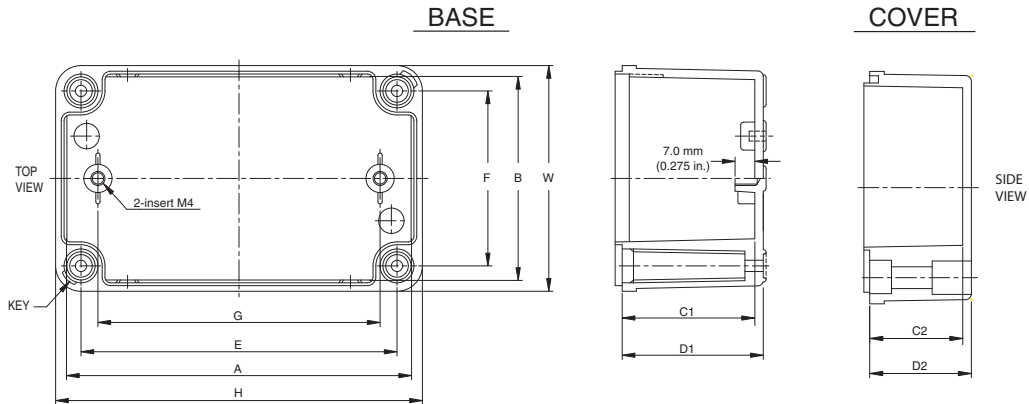
Approximate Dimensions

For General Purpose Enclosures

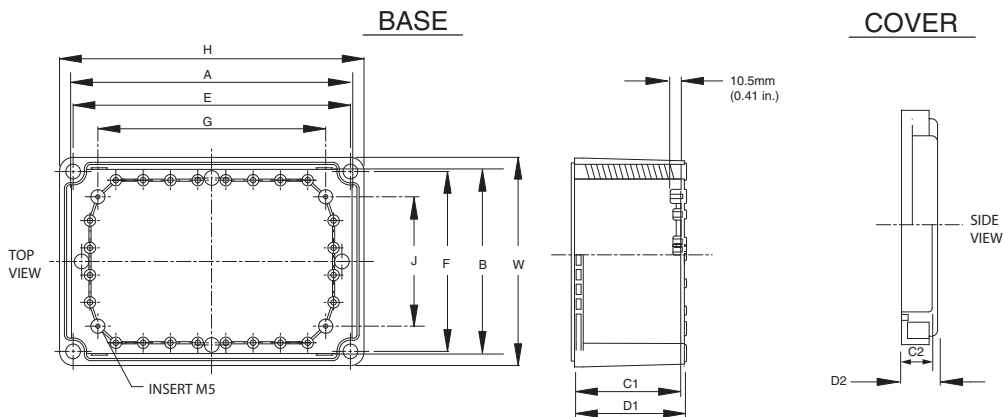
Dimensions are shown in millimeters (inches). Dimensions are not intended to be used for manufacturing purposes.

General Purpose Enclosures

1



Cat. No.	Overall Dimension				Inside Dimension				Enclosure Mounting Dimension		Mounting Plate Mounting Dim.
	H	W	D1	D2	A	B	C1	C2	E	F	
598-BS533	130 (5.12)	80 (3.15)	50 (1.97)	35 (1.38)	120 (4.72)	70 (2.76)	46.5 (1.83)	31.5 (1.24)	112 (4.41)	62 (2.44)	100 (3.94)
598-BS733	180 (7.09)	80 (3.15)	50 (1.97)	35 (1.38)	170 (6.69)	70 (2.76)	46.5 (1.83)	31.5 (1.24)	162 (6.38)	62 (2.44)	150 (5.91)
598-BS933	250 (9.84)	80 (3.15)	50 (1.97)	35 (1.38)	240 (9.45)	70 (2.76)	46.5 (1.83)	31.5 (1.24)	232 (9.13)	62 (2.44)	220 (8.66)



Cat. No.	Overall Dimension				Inside Dimension				Enclosure Mounting Dimension		Mounting Plate Mounting Dim.	
	H	W	D1	D2	A	B	C1	C2	E	F	G	J
598-BS885	190	190	98	30	174	174	94	26	165	165	120	120
598-DS885	(7.48)	(7.48)	(3.86)	(1.18)	(6.85)	(6.85)	(3.70)	(1.02)	(6.50)	(6.50)	(4.72)	(4.72)
598-BS1187	280	190	98	80	266	170	94	76	255	165	210	120
598-DS1187	(11.02)	(7.48)	(3.86)	(3.15)	(10.47)	(6.69)	(3.70)	(2.99)	(10.04)	(6.50)	(8.27)	(4.72)
598-BS1587	382	192	98	80	366	172	94	76	355	165	310	120
598-DS1587	(15.04)	(7.56)	(3.86)	(3.15)	(14.41)	(6.77)	(3.70)	(2.99)	(13.98)	(6.50)	(12.20)	(4.72)
598-BS11115	280	280	98	30	260	260	94	26	255	255	210	210
598-DS11115	(11.02)	(11.02)	(3.86)	(1.18)	(10.24)	(10.24)	(3.70)	(1.02)	(10.04)	(10.04)	(8.27)	(8.27)
598-BS13115	341	280	100	30	320	260	96	26	316	256	270	210
598-DS13115	(13.43)	(11.02)	(3.94)	(1.18)	(12.60)	(10.24)	(3.78)	(1.02)	(12.44)	(10.08)	(10.63)	(8.27)
598-BS15117	380	280	98	80	359	259	94	76	355	255	310	210
598-DS15117	(14.96)	(11.02)	(3.86)	(3.15)	(14.13)	(10.20)	(3.70)	(2.99)	(13.98)	(10.04)	(12.20)	(8.27)
598-BS22115	560	280	98	30	540	260	94	26	535	255	490	220
598-DS22115	(22.05)	(11.02)	(3.86)	(1.18)	(21.26)	(10.24)	(3.70)	(1.02)	(21.06)	(10.04)	(19.29)	(8.66)
598-BS22157	560	380	148	30	540	360	144	26	535	355	490	311
598-DS22157	(22.05)	(14.96)	(5.83)	(1.18)	(21.26)	(14.17)	(5.67)	(1.02)	(21.06)	(13.98)	(19.29)	(12.24)

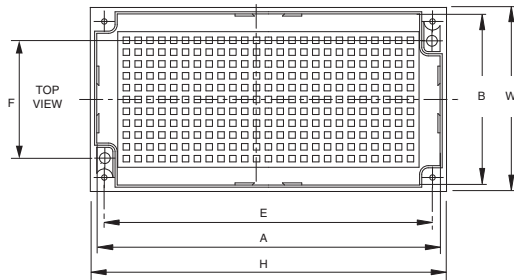
Approximate Dimensions

For Junction Boxes

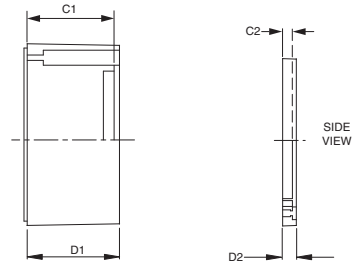
Dimensions are shown in millimeters (inches). Dimensions are not intended to be used for manufacturing purposes.

Junction Boxes

BASE

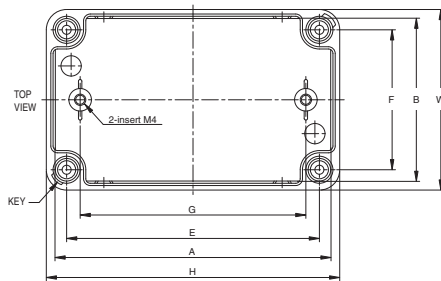


COVER

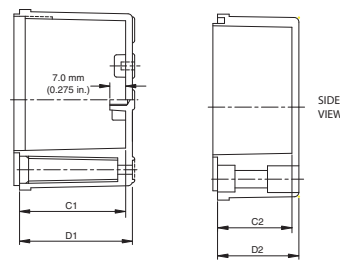


Cat. No.	Overall Dimension				Inside Dimension				Enclosure Mounting Dimension	
	H	W	D1	D2	A	B	C1	C2	E	F
598-BS332	90 (3.54)	70 (2.76)	45 (1.77)	6.5 (0.26)	84 (3.31)	64 (2.52)	42 (1.79)	3.5 (0.14)	78 (3.07)	39 (1.54)
598-BS632	165 (6.50)	85 (3.35)	45 (1.77)	6.5 (0.26)	159 (6.26)	79 (3.11)	42 (1.79)	3.5 (0.14)	153 (6.02)	55 (2.17)

BASE

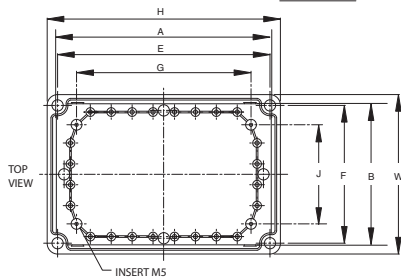


COVER

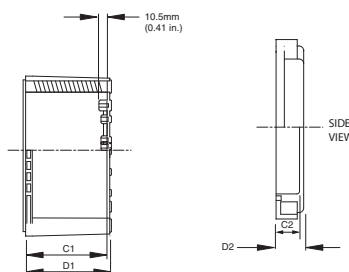


Cat. No.	Overall Dimension				Inside Dimension				Enclosure Mounting Dimension		Mounting Plate Mounting Dim.
	H	W	D1	D2	A	B	C1	C2	E	F	
598-BS533	130 (5.12)	80 (3.15)	50 (1.97)	35 (1.38)	120 (4.72)	70 (2.76)	46.5 (1.83)	31.5 (1.24)	112 (4.41)	62 (2.44)	100 (3.94)
598-BS733	180 (7.09)	80 (3.15)	50 (1.97)	35 (1.38)	170 (6.69)	70 (2.76)	46.5 (1.83)	31.5 (1.24)	162 (6.38)	62 (2.44)	150 (5.91)
598-BS933	250 (9.84)	80 (3.15)	50 (1.97)	35 (1.38)	240 (9.45)	70 (2.76)	46.5 (1.83)	31.5 (1.24)	232 (9.13)	62 (2.44)	220 (8.66)

BASE



COVER



Cat. No.	Overall Dimension				Inside Dimension				Enclosure Mounting Dimension		Mounting Plate Mounting Dim.	
	H	W	D1	D2	A	B	C1	C2	E	F	G	J
598-BS885	190 (7.48)	190 (7.48)	98 (3.86)	30 (1.18)	174 (6.85)	174 (6.85)	94 (3.70)	26 (1.02)	165 (6.50)	165 (6.50)	120 (4.72)	120 (4.72)