

PanelView Plus 6 Terminals - 400 and 600

The smaller PanelView Plus 6 - 400 and 600 terminals combine the display, logic, memory, and power into one base unit:

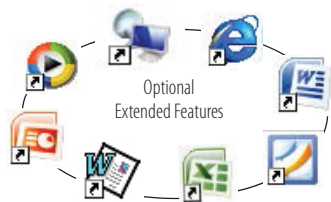
- The 400 model has a 3.5-in. color graphic display with keypad or combination key and touch input, or a grayscale display with keypad input.
- The 600 model has a 5.7-in. color or grayscale graphic display with keypad, touch screen, or combination keypad/touch-screen input.



This new generation of terminals runs the Windows CE 6.0 operating system similar to the PanelView Plus 6 - 700 to 1500 terminals. The terminals run HMI applications but also provide the ability to access the desktop. For users with more complex application requirements, the 600 color terminals can be ordered with optional, extended features and file viewers.

Terminal Features

Features	Description
High memory capacity	512 MB nonvolatile memory and 256 MB RAM
Power input	AC or DC
Communication ports	Units are available with one of these communication options: <ul style="list-style-type: none"> • RS-232 • Ethernet and RS-232 Separate communication modules are not supported.
USB ports	<ul style="list-style-type: none"> • 1 USB host ports for connecting a USB mouse, keyboard, printer, and USB drives that are hot swappable • 1 USB device port for connecting a host personal computer
Secure Digital (SD) card slot	Hot-swappable card slot supports 1784-SDx SD cards for transferring files, upgrading firmware, or logging data
Operating system	<p>All terminals run the Windows CE 6.0 operating system (OS) providing OS functionality needed for most users needs:</p> <ul style="list-style-type: none"> • FTP server • VNC client/server • PDF reader • Active X controls • Third-party device support <p>Additional functionality is available for the 600 terminals by ordering terminals with these optional, extended features:</p> <ul style="list-style-type: none"> • Internet Explorer web browser • Media player • Microsoft file viewers for PowerPoint, Excel, and Word • WordPad text editor
FactoryTalk View software	<ul style="list-style-type: none"> • FactoryTalk View Machine Edition Station (runtime) software, version 6.10 or later, is preloaded and activated on each terminal • HMI applications are developed with FactoryTalk View Studio for Machine Edition software, which is purchased separately
Reset and default switches	Provide easy access to diagnostic and repair operations



Product Selections

Bulletin	Input Type	Display Size	Display Type	Communication	Power	Operating System
2711P-	K = Keypad B = Keypad/Touch T = Touch	4 = 3.5 6 = 5.7 in.	C = Color M = Grayscale	5 = RS-232, USB ports 20 = Ethernet, RS-232, USB ports	A = AC D = DC	8 = Windows CE 6.0 9 = Windows CE 6.0 with extended features and file viewers

PanelView Plus 6 - 400 Terminals without Extended Features

Cat. No.		Display		Communication		USB Ports		Input Power	System Memory (MB) ⁽¹⁾	
Keypad	Keypad/Touch	Size	Type	RS-232	Ethernet	Host	Device		RAM	Nonvolatile
2711P-K4M5A8	–	3.5-in.	Grayscale	•		•	•	AC	256	512
2711P-K4M5D8	–			•		•	•	DC	256	512
2711P-K4M20A8	–			•	•	•	•	AC	256	512
2711P-K4M20D8	–			•	•	•	•	DC	256	512
2711P-K4C5A8	2711P-B4C5A8	3.5-in.	Color	•		•	•	AC	256	512
2711P-K4C5D8	2711P-B4C5D8			•		•	•	DC	256	512
2711P-K4C20A8	2711P-B4C20A8			•	•	•	•	AC	256	512
2711P-K4C20D8	2711P-B4C20D8			•	•	•	•	DC	256	512

(1) All terminals support FactoryTalk View Machine Edition Station software, version 6.10 or later, and the Windows CE 6.0 operating system without extended features and Microsoft file viewers.

PanelView Plus 6 - 600 Terminals without Extended Features

Cat. No.			Display		Communication		USB Ports		Input Power	System Memory (MB) ⁽¹⁾	
Keypad	Touch	Keypad/Touch	Size	Type	RS-232	Ethernet	Host	Device		RAM	Nonvolatile
2711P-K6M5A8	2711P-T6M5A8	2711P-B6M5A8	5.7-in.	Grayscale	•		•	•	AC	256	512
2711P-K6M5D8	2711P-T6M5D8	2711P-B6M5D8			•		•	•	DC	256	512
2711P-K6M20A8	2711P-T6M20A8	2711P-B6M20A8			•	•	•	•	AC	256	512
2711P-K6M20D8	2711P-T6M20D8	2711P-B6M20D8			•	•	•	•	DC	256	512
2711P-K6C5A8	2711P-T6C5A8	2711P-B6C5A8	5.7-in.	Color TFT	•		•	•	AC	256	512
2711P-K6C5D8	2711P-T6C5D8	2711P-B6C5D8			•		•	•	DC	256	512
2711P-K6C20A8	2711P-T6C20A8	2711P-B6C20A8			•	•	•	•	AC	256	512
2711P-K6C20D8	2711P-T6C20D8	2711P-B6C20D8			•	•	•	•	DC	256	512

(1) All terminals support FactoryTalk View Machine Edition Station software, version 6.10 or later, and the Windows CE 6.0 operating system without extended features and Microsoft file viewers.

PanelView Plus 6 - 600 Terminals with Extended Features

Cat. No.			Display		Communication		USB Ports		Input Power	System Memory (MB) ⁽¹⁾	
Keypad	Touch	Keypad/Touch	Size	Type	RS-232	Ethernet	Host	Device		RAM	Nonvolatile
2711P-K6C5A9	2711P-T6C5A9	2711P-B6C5A9	5.7-in.	Color TFT	•		•	•	AC	256	512
2711P-K6C5D9	2711P-T6C5D9	2711P-B6C5D9			•		•	•	DC	256	512
2711P-K6C20A9	2711P-T6C20A9	2711P-B6C20A9			•	•	•	•	AC	256	512
2711P-K6C20D9	2711P-T6C20D9	2711P-B6C20D9			•	•	•	•	DC	256	512

(1) All terminals support FactoryTalk View Machine Edition Station software, version 6.10 or later, and the Windows CE 6.0 operating system with extended features and Microsoft file viewers.

Accessories

The tables list accessories for the PanelView Plus 6 - 400 and 600 terminals.

Antiglare Overlays

Cat. No. ⁽¹⁾	Terminal Model	Input Type		
		Keypad	Touch	Key/Touch
2711P-RGB4	400 grayscale or color	•		•
2711P-RGK6	600 grayscale or color	•		•
2711P-RGT6			•	

(1) Three overlays are shipped with each catalog number.

Secure Digital (SD) Cards

Cat. No.	Description
1784-SD1	1 GB SD card
1784-SD2	2 GB SD card
2711C-RSCD	USB to SD adapter for SD card

Power Supply and Power Terminal Blocks

Cat. No.	Description	Quantity
2711P-RSACDIN	DIN-rail power supply, AC-to-DC, 85...265V AC, 47...63 Hz	1
2711P-6RSA	AC power module converts a DC-powered terminal to AC power	1
2711P-RVAC	AC power terminal block	10
2711P-TBDC	DC power terminal block	10

Mounting Hardware

Cat. No.	Description	Quantity
2711P-RTFC	Mounting levers	8

Cables

Cat. No.	Description	Length
6189V-USBCBL2	Programming cable that connects the USB device port of the terminal to a USB host port of a computer	1.8 m (6 ft)

Function Key Legend Inserts

Cat. No.	Terminal Model	Includes
2711P-RFK6	600 keypad and keypad/touch	Blank legend inserts and software

Replacement Battery

Cat. No.	Description	Quantity
2711P-RY2032	Replacement battery CR2032 coin-cell equivalent battery	1

Communication Cables

The tables list runtime communication cables for PanelView Plus 6 (400, 600, 700, 1000, 1250, 1500) terminals. The PanelView Plus 6 Compact terminals use the same cables as the PanelView Plus 6 - 400 and 600 terminals.

All PanelView Plus 6 terminals use a standard Ethernet cable for application transfers between a computer and the terminal.

Communication Cables: PanelView Plus 6 Terminals to PLC-5® Controllers

	PLC-5, PLC-5C, PLC-5E	PLC-5, PLC-5C, PLC-5E	PLC-5E	PLC-5C
	Port: CH0 - 25-pin RS-232 Protocol: DF1	Port: CH1/CH2 DH+ Protocol: DH+	Port: CH2 Ethernet RJ45 Protocol: EtherNet/IP	Port: ControlNet Port Protocol: ControlNet
PanelView Plus 6 Compact 400, 600, 1000	2711-NC13 (5 m/16 ft) or 2711-NC14 (10 m/32 ft) cable (Requires DB9 to DB25 adapter)	-	1585J-M type cable or 2711P-CBL-EX04 (4 m/14 ft)	-
PanelView Plus 6 400, 600		-		-
PanelView Plus 6 700, 1000, 1250, 1500		Requires 2711P-RN6 or 2711P-RN6K module, with shielded twinaxial cable (1770-CD)		Requires 2711P-RN15S or 2711P-RN15SK module, and 1786 ControlNet media

Communication Cables: PanelView Plus 6 Terminals to SLC Controllers

	SLC 5/01, 5/02, 5/03	SLC 5/03, 5/04, 5/05	SLC 5/04	SLC 5/05
	Port: CH1 - RJ45 Protocol: DH-485	Port: CH0 - 9-pin RS-232 Protocol: DF1 or DH-485 (point-to-point)	Port: CH1 Protocol: DH+	Port: CH1 - Ethernet - RJ45 Protocol: EtherNet/IP
PanelView Plus 6 Compact 400, 600, 1000	Requires 1761-NET-AIC module, and 2711-NC13 (5 m/16 ft) or 2711-NC14 (10 m/32 ft) cable	2711-NC13 (5 m/16 ft) 2711-NC14 (10 m/32 ft)	-	1585J-M type cable or 2711P-CBL-EX04 (4 m/14 ft)
PanelView Plus 6 400, 600			-	
PanelView Plus 6 700, 1000, 1250, 1500			Requires 2711P-RN6 module, with 1761-CBL-AS03 (3 m/10 ft) or 1761-CBL-AS09 (9 m/30 ft) cable	

Communication Cables: PanelView Plus 6 Terminals to MicroLogix Controllers

	MicroLogix 1400, 1500LRP	MicroLogix 1000, 1100, 1200, 1400, 1500LSP	MicroLogix 1100, 1400
	Port: CH1/CH2 - 9-pin RS-232 Protocol: DF1 or DH-485 (point-to-point)	Port: CH0 - 8-pin Mini-DIN Protocol: DF1 or DH-485 (point-to-point)	Port: Ethernet - RJ45 Protocol: EtherNet/IP
PanelView Plus 6 Compact 400, 600, 1000	2711-NC13 (5 m/16 ft) or 2711-NC14 (10 m/32 ft) cable (Requires DB9 to DB25 adapter)	2711-NC21 (5 m/16 ft) or 2711-NC22 (15 m/49 ft)	1585J-M type cable or 2711P-CBL-EX04 (4 m/14 ft)
PanelView Plus 6 400, 600			
PanelView Plus 6 700, 1000, 1250, 1500			

Communication Cables: PanelView Plus 6 Terminals to CompactLogix Controllers

	CompactLogix	CompactLogix L35E, L23E, L32E, 1768-ENBT	CompactLogix L35CR, L32C, 1768-CNB, 1768-CNBR
	Port: CH0 - 9-pin RS-232 Protocol: DF1 or DH-485 (point-to-point)	Port: Ethernet - RJ45 Protocol: EtherNet/IP	Port: ControlNet Port Protocol: ControlNet
PanelView Plus 6 Compact 400, 600, 1000	2711-NC13 (5 m/16 ft) 2711-NC14 (10 m/32 ft)	1585J-M type cable or 2711P-CBL-EX04 (4 m/14 ft)	1786 ControlNet media
PanelView Plus 6 400, 600			
PanelView Plus 6 700, 1000, 1250, 1500			

Communication Cables: PanelView Plus 6 Terminals to ControlLogix Controllers

	ControlLogix	ControlLogix	ControlLogix	ControlLogix
	Port: CH0 - 9-pin RS-232 Protocol: DF1 or DH-485 (point-to-point)	Communication Module: 1756-ENBT, 1756-EN2T Protocol: EtherNet/IP	Communication Module: 1756-CNB Protocol: ControlNet	Communication Module: 1756-DHRIO Protocol: DH+
PanelView Plus 6 Compact 400, 600, 1000	2711-NC13 (5 m/16 ft) 2711-NC14 (10 m/32 ft)	1585J-M type cable or 2711P-CBL-EX04 (4 m/14 ft)	1786 ControlNet media	-
PanelView Plus 6 400, 600				-
PanelView Plus 6 700, 1000, 1250, 1500				Shielded twinaxial cable (1770-CD)

Communication Cables: PanelView Plus 6 Terminals to Interface Modules

Protocol	PanelView Plus 6 Comm Port 400, 600 700, 1000, 1250, 1500	1747-AIC	1761-NET-AIC			1761-NET-ENI
			Port 1 (9-pin)	Port 2 (8-pin Mini DIN)	Port 3 (DH-485)	Port 2 (8-pin Mini DIN)
DF1	RS-232 port All terminals	-	2711-NC13 (5 m/16 ft) 2711-NC14 (10 m/32 ft)	2711-NC21 (5 m/16 ft) 2711-NC22 (15 m/49 ft) Null modem required	-	1761-CBL-AP00 (5 m) 1761-CBL-PM02 (2 m) 2711-CBL-PM05 (5 m) 2711-CBL-PM10 (10 m)
DH-485	RS-232 port All terminals	-	2711-NC13 (5 m/16 ft) 2711-NC14 (10 m/32 ft)	2711-NC21 (5 m/16 ft) 2711-NC22 (15 m/49 ft) Null modem required	-	-
	DH-485 port 700 to 1500 terminals only Requires 2711P-RN6 or 2711P-RN6K	Direct connection to single AIC with Belden 9842 cable ⁽¹⁾	-	-	Direct connection to single AIC+ with Belden 9842 cable ⁽¹⁾	-

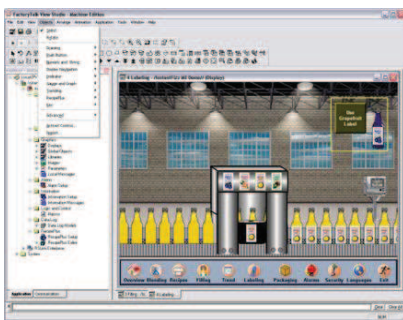
(1) Use the serial port on the PanelView Plus 6 terminal with an AIC+ module for a DH-485 network solution.

FactoryTalk View performance and visibility HMI software, including FactoryTalk View Machine Edition, FactoryTalk View Site Edition, FactoryTalk ViewPoint, and FactoryTalk View Studio are designed with a common look, feel, and navigation to help speed HMI development and training time.

Supporting the Rockwell Automation Integrated Architecture platform, FactoryTalk View software is part of the scalable and unified suite of monitoring and control solutions designed to span machine-level applications through supervisory-level HMI applications across a network. This suite of HMI software products offers you a common development environment, application reuse, and architecture to increase productivity, reduce operation costs, and improve quality.

Combining Rockwell Automation hardware with its software assures comprehensive application support from an industry leader. For a complete list of available HMI software, visit <http://www.rockwellautomation.com/rockwellssoftware>.

FactoryTalk View Machine Edition Software



FactoryTalk View Machine Edition (ME) software supports both open and embedded operator interface solutions for monitoring and controlling individual machines or small processes. This software features a consistent operator interface across multiple platforms, including Microsoft Windows CE, Windows 7, Vista, XP, and Server solutions. FactoryTalk View ME software consists of a design and runtime environment.

FactoryTalk View Studio Software

FactoryTalk View Studio software is the design environment for creating and testing HMI applications, including graphic displays, trending, alarming, and real-time animation. Runtime files can be generated to run on a PanelView Plus 6 terminal or industrial computer.

FactoryTalk View ME Station

FactoryTalk View ME Station is the runtime environment for HMI applications. FactoryTalk View ME Station is automatically installed and activated on PanelView Plus 6 terminals. FactoryTalk View ME activation is required when running HMI applications on industrial computers.

FactoryTalk View ME software offers many advantages:

- Alarming to alert operators to conditions requiring immediate action
- Security to restrict operator access to specific displays
- RecipePlus for machine or process recipe management
- Runtime language switching supports up to 20 languages per application
- Global and predefined objects are time and memory savers
- RSLogix™ 5000 and Logix Designer process faceplates
- Ability to convert runtime application to design application
- Parameter passing to facilitate reuse of displays and design efficiency

FactoryTalk View Site Edition Software

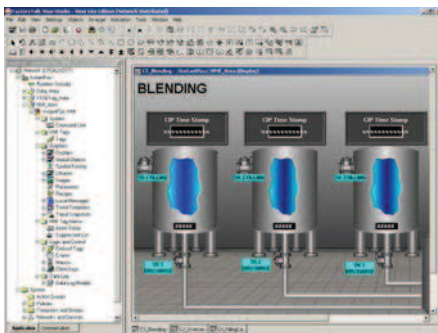
FactoryTalk View Site Edition (SE) software is an HMI for developing supervisory-level monitoring and control applications. This distributed and scalable architecture can be applied to a standalone, one-server/one-user application to multiple users interfacing with multiple servers. Runtime servers and clients are supported allowing customers to develop and deploy a multi-server/multi-client application.

FactoryTalk View SE applications are created and tested within the FactoryTalk View Studio design environment:

- Share data and seamless integration with other FactoryTalk enabled products. The FactoryTalk Services Platform provides common services such as security, alarming, and diagnostics across products.
- Optimize plant communication with FactoryTalk Live Data and premier connectivity to Rockwell Automation controllers.
- Access tag information directly in the controller, eliminating the need to create HMI tags.
- Configure an application from anywhere on the network and make changes to a running system with a remote, multi-user configuration capability.
- Define graphic displays once and reference them throughout a distributed system.
- Provide an audit trail of operator and alarm information in a centralized log database.
- Customize the operator experience by using client-side VBA and the exposed graphics object model.
- Maximize system availability with online creation and editing of graphics and optional server redundancy.



FactoryTalk View Studio Software



FactoryTalk View Machine Edition and FactoryTalk View Site Edition share a common design environment called FactoryTalk View Studio for creating applications. The ability to edit and reuse projects in FactoryTalk View Studio improves portability between embedded machine and supervisory HMI systems.

With FactoryTalk View software, all products in the suite are built on the same integrated, scalable architecture. Application developers can import entire machine-level applications into supervisory-level applications or drag individual components and drop them right into supervisory projects, saving development time and reducing engineering and training costs.

Plus, you can protect your current HMI investments by importing PanelBuilder™ 32(PanelView) applications into FactoryTalk View ME software and RSVIEW®32 applications into FactoryTalk View SE software.

With FactoryTalk View Studio software, you can do the following:

- Configure a single operator station or an entire distributed application from one location.
- Access tags from OPC servers throughout the system via a tag browser that presents direct controller tags and HMI tags in a logical hierarchy.
- Remotely configure RSLinx and FactoryTalk View SE servers.
- Create displays by using a full-featured graphics editor.
- Define display test in multiple languages, allowing operators to switch the language at runtime.
- Use pre-engineered faceplates to interface with the process control functions in the Logix controllers.

FactoryTalk ViewPoint Software



An add-on to FactoryTalk View SE software and PanelView Plus 6 terminals, FactoryTalk ViewPoint software provides on-demand access to important information about your plant or process from a web browser. Plant managers, supervisors, OEMs, system integrators, and other key stakeholders can now access, monitor, and interact with plant floor operations from virtually any location. The thin-client configuration means no client software to install and maintain, lowering total cost of ownership:

- Fully scalable, animated web applications viewable in the office, at home, or on the road.

- Gives managers, OEMs, and system integrators read and write capability to both view and control real-time plant floor operations by logging into an Internet browser.
- Gain fast access to real-time information by using a standard web browser.
- Supports multiple browsers and client devices for increased flexibility.
- Lets FactoryTalk View projects be web-enabled without requiring application changes.
- Monitor and control HMI applications, perform diagnostics, and provide remote support without having to be at customer sites.

Software Comparison

TECHNOLOGY: Customer Requirements	FactoryTalk View Site Edition	FactoryTalk View Machine Edition	RSView32
Operating systems (32-bit)	<ul style="list-style-type: none"> Windows XP SP3 Windows 7 Professional Windows Vista Business Windows Server 2003 R2 SP3 Windows Server 2008 SP2 	<ul style="list-style-type: none"> Windows XP Windows 7 Professional Windows CE Windows Vista Business Windows Server 2003/2008 	<ul style="list-style-type: none"> Windows XP SP3 Windows 7 Professional Windows Server 2003 R2 SP3 Windows Server 2008 SP2
Operating systems (64-bit)	<ul style="list-style-type: none"> Windows 7 Professional SP1 and SP2 Windows Server 2008 R2 SP2 	<ul style="list-style-type: none"> Windows 7 Professional SP1 Windows Server 2008 R2 and SP2 	
Embedded platforms		X	
Windows domain security	X	X	X
OPC/ActiveX	X	X	X
FactoryTalk enabled	X	X	X
Server-side VBA			X
Client-side VBA	X		

ARCHITECTURE: Customer Requirements	FactoryTalk View Site Edition		FactoryTalk View Machine Edition	RSView32
Primary application	Supervisory level: single-station or multiple-server, multiple-client		Machine level: single-station	Supervisory level; single station or single server, multiple client
Tag-based HMI	X		X	<ul style="list-style-type: none"> Windows XP/2000/NT/9x/ Windows Server 2003
Direct referencing	X		X	
	Network (Distributed)	Local		
Max number of servers/clients	10/50			1/20
FactoryTalk ViewPoint	X	X	X ⁽¹⁾	X
RSView32 web server				X
Thin clients (terminal services)	X			X
Multi-user development	X			
Remote configuration at runtime	X			
Redundancy – data server	X			
Redundancy – HMI server	X			Active display

(1) Supported only on PanelView Plus 6 terminals.

FEATURES: Customer Requirements	FactoryTalk View Site Edition	FactoryTalk View Machine Edition	RSView32
Animation – visibility, color, fill, horizontal and vertical position, width, height, rotation, horizontal and vertical slider, and more	And touch	No touch animation	And touch
Alarms	<ul style="list-style-type: none"> FactoryTalk alarms and events HMI alarms Digital and analog Defined alarm severities Alarm log 	<ul style="list-style-type: none"> Tag-based (from controller) Alarm log 	<ul style="list-style-type: none"> Tag-based Digital and analog Definable alarm severities Alarm log
Data logging	<ul style="list-style-type: none"> 20 data log models per project Each with up to 10,000 tags Log to ODBC or proprietary database 	<ul style="list-style-type: none"> 1 data log model per project With up to 100 tags 1,000 K records max Export to dbf 	<ul style="list-style-type: none"> 20 plus data log models per project Each with up to 10,000 tags Log to ODBC or proprietary database
Trending	TrendX 4.0	TrendX 4.0 subset	TrendX 3.1 and native
Security	<ul style="list-style-type: none"> Security assigned to tags, graphic displays, macros, commands, OLE objects Local or Windows security 	<ul style="list-style-type: none"> Display-based Local or Windows security 	<ul style="list-style-type: none"> Security assigned to tags, graphic displays, macros, commands, OLE objects Local or Windows security
Other features	<ul style="list-style-type: none"> Test run macros Derived tags Event detector 	<ul style="list-style-type: none"> Test run macros Derived tags S/BTest RunMacrosDerived Tags 	<ul style="list-style-type: none"> Test run macros Derived tags Event detector
Pricing model	<ul style="list-style-type: none"> Display-based pricing Multiple levels 	<ul style="list-style-type: none"> Included with PanelView Plus 6 or display-based pricing Multiple levels for FactoryTalk View ME Station 	<ul style="list-style-type: none"> Tag-based pricing Multiple levels

Software Selection

FactoryTalk View Machine Edition (ME) Software

Cat. No. ⁽¹⁾	Description
9701-VWSTMENE	FactoryTalk View Studio for Machine Edition - Configuration software for developing and testing machine level HMI applications. FactoryTalk View Machine Edition includes RSLinx Enterprise and KEPServer Enterprise software.

(1) Order localized versions of the software by replacing EN in the catalog number with DE for German, FR for French, JP for Japanese, or ZH for Chinese.

FactoryTalk View Machine Edition (ME) Station

Cat. No. ⁽¹⁾	Description ^{(2) (3)}
9701-VWWMR015AENE	FactoryTalk View ME Station runtime 15 displays
9701-VWWMR030AENE	FactoryTalk View ME Station runtime 30 displays
9701-VWWMR075AENE	FactoryTalk View ME Station runtime 75 displays
9701-VWWMR250AENE	FactoryTalk View ME Station runtime 250 displays RS-232 operating cable, 9-pin D Shell to 8-pin Mini DIN

(1) Order localized versions of the software by replacing EN in the catalog number with DE for German, FR for French, JP for Japanese, or ZH for Chinese.

(2) FactoryTalk View Machine Edition Station is the runtime environment used to run FactoryTalk View ME projects created with FactoryTalk View Studio software on any computer with the Windows CE, Windows 7 Professional, Windows XP/Vista Home Basic/Vista Business, or Windows Server 2003/2008 operating system including the industrial computers.

(3) FactoryTalk View ME Station Runtime is included with all PanelView Plus 6 terminals.

FactoryTalk View Site Edition (SE) Software

Cat. No. ⁽¹⁾	Description ⁽²⁾
9701-VWSTENE	FactoryTalk View Studio for FactoryTalk View Enterprise- configuration software for developing and testing machine level and supervisory level HMI applications
9701-VWSCWAENE	FactoryTalk View SE Client - software for viewing and interacting with FactoryTalk View SE Servers ⁽³⁾
9701-VWSCRAENE	FactoryTalk View SE View Client - provides read-only capabilities
9701-VWSB015AENE	FactoryTalk View SE Station 15 display
9701-VWSB025AENE	FactoryTalk View SE Station 25 display
9701-VWSB100AENE	FactoryTalk View SE Station 100 display
9701-VWSB250AENE	FactoryTalk View SE Station 250 display
9701-VWSB000AENE	FactoryTalk View SE Station unlimited display
9701-VWSS025LENE	FactoryTalk View SE Server 25 display with RSLinx Enterprise
9701-VWSS100LENE	FactoryTalk View SE Server 100 display with RSLinx Enterprise
9701-VWSS250LENE	FactoryTalk View SE Server 250 display with RSLinx Enterprise
9701-VWSS000LENE	FactoryTalk View SE Server unlimited display with RSLinx Enterprise

(1) Order localized versions of the software by replacing EN in the catalog number with DE for German, FR for French, JP for Japanese, or ZH for Chinese.

(2) FactoryTalk View Station and FactoryTalk View SE Server include RSLinx Enterprise and RSLinx Classic software, version 2.x.

(3) FactoryTalk View SE Server stores HMI project components and serves to clients, for example, graphic displays.