

# Eco and Compact Combination Starters

## Product Overview



### Bulletin 190 Eco and Compact Combination Starters

- Current range: 0.1...43 A
- Bulletin 190E/191E modular Eco starters
- Bulletin 190S/191S Pre-wired compact starters
- Uses Bulletin 140M motor protection circuit breakers (MPCBs) and Bulletin 100-C or 100-K contactors
- cULus Listed for control and protection of motor loads
- Type 1 or Type 2 Coordination
- Mounts to top hat rail(s) or screw mounts

Your order must include: cat. no. of the starter selected and, if required, cat. no. of any accessories.

### Table of Contents








Product Selection ..... 2-358  
 Factory-Installed  
 Modifications ..... 2-370

### Standards Compliance

IEC/EN 60947-1, -2, -4-1, -5  
 IEC/EN 60204-1  
 CSA 22.2, No. 14  
 UL 508

### Certifications

cULus Listed (File No. E125316, Guide NKJH, NKJH7)  
 CE Marked

							
	Eco Starter with 100-K Miniature Contactor	Eco Starter with 100-C IEC Contactor	Reversing Eco Starter with 100-K Miniature Contactor	Reversing Eco Starter with 100-C IEC Contactor	Compact Combination Starter (25 A)	Compact Combination Starter (45 A)	Reversing Compact Combination Starter (25 A)
AC Coils	✓	✓	✓	✓	✓	✓	✓
DC Coils	✓	24V DC only	✓	24V DC only	✓	✓	24V DC only
Standards Compliance	See this page						
cULus Listed	See this page						
CE	✓	✓	✓	✓	✓	✓	✓
IEC 60947	✓	✓	✓	✓	✓	✓	✓
Type 2 Coordination	See pages 2-362 and page 2-368						
Components							
MPCB	140M-C	140M-C,-D	140M-C	140M-C,-D	140M-C,-D	140M-F	140M-C,-D
Contactor	100-K	100-C	104-K	104-C	100-C	100-C	104-C

**Cat. No. Explanation**

Examples given in this section are for reference purposes. This basic explanation should not be used for product selection; not all combinations will produce a valid catalog number.

**190E - A N D 2 - C A16 X - TE**  
*a b c d e f g h i*

**a**

Bulletin Number	
Starter Type	
Code	Description
190E	DOL Starter with MPCB
191E	Rev Starter with MPCB

**b**

Contactor Size	
Code	Description
A	100-C09
B	100-C12
C	100-C16
D	100-C23
KM	100-K05
KN	100-K09
KP	100-K12

**c**

Style	
Code	Description
N	Open Style — 35 mm top hat rail mount (1)

**d**

AC Coil Voltages for Contactor Size A-D	
Code	Description
Q	12V AC, 60 Hz
R	12V AC, 50 Hz
J	24V AC, 60 Hz
K	24V AC, 50 Hz
KJ	24V AC, 50/60 Hz
V	32V AC, 50 Hz/36V AC, 60 Hz
W	36V AC, 50 Hz
X	42V AC, 50 Hz/48V AC, 60 Hz
Y	48V AC, 50 Hz
KY	48V AC, 50/60 Hz
KP	100V AC, 50 Hz/100...110V AC, 60 Hz
D	110V AC, 50 Hz/120V AC, 60 Hz
KD	100V AC, 50/60 Hz
P	120V AC, 50 Hz
KL	200...230V AC, 50/60 Hz
H	208V AC, 60 Hz
L	208...240V AC, 60 Hz
A	220V AC, 50 Hz /240V AC, 60 Hz
F	220...230V AC, 50 Hz
KF	230V AC, 50/60 Hz
VA	230...240V AC, 50 Hz
T	240V AC, 50 Hz/277V AC, 60 Hz
E	380V AC, 60 Hz
N	380...400V AC, 50 Hz/440V AC, 60 Hz
KN	400V AC, 50/60 Hz
G	400...415V AC, 50 Hz
B	440V AC, 50 Hz/480V AC, 60 Hz
M	500V AC, 50 Hz
C	550V AC, 50 Hz/600V AC, 60 Hz

**d, continued**

DC Coil Voltages for Contactor Size A...D	
Code	Description
EJ	24V DC electronic
AC Coil Voltages for Contactor Size KM...KP	
Code	Description
KJ	24V AC, 50/60 Hz
D	110V AC, 50 Hz/120V AC, 60 Hz
KF	230V AC, 50/60 Hz
KA	240V AC, 50/60 Hz
KN	400V AC, 50/60 Hz
B	440V AC, 50 Hz/480V AC, 60 Hz
VC	525V AC, 50 Hz/600V AC, 60 Hz
DC Coil Voltage for Contactor Sizes KM...KP	
Code	Description
ZQ	12V DC
ZJ	24V DC
DJ	24V DC with integrated diode
ZD	110V DC
ZS	125V DC
ZA	220V DC
ZT	250V DC

**e**

Contactor Aux. Contacts	
Code	Description
1	1 N.C. (190E, or 191E-KM...KP)
2	1 N.O. (190E, or 191E-KM...KP)
3	1 N.O. + 1 N.C. (191E-A...D)

**f**

Circuit Breaker Frame Size	
Code	Description
C	C Frame
D	D Frame

**g**

Circuit Breaker Current Range	
Code	Description
A16	0.1...0.16 A
A25	0.16...0.25 A
A40	0.25...0.4 A
A63	0.4...0.63 A
B10	0.63...1.0 A
B16	1.0...1.6 A
B25	1.6...2.5 A
B40	2.5...4.0 A
B63	4.0...6.3 A
C10	6.3...10 A
C16	10...16 A
C20	16...20 A
C25	20...25 A

**h**

Circuit Breaker Aux. and Trip Contacts for 140M	
Bottom Front	
Code	Description
X	Without Aux. Trip Contacts
A	1 N.C. Aux. Contact
B	1 N.O. Aux. Contact
C	1 N.O. + 1 N.C. Aux. Contact
D	2 N.O. Aux. Contact
R	1 N.O. (SC+OL) + 1 N.C. Aux. Contact
S	1 N.O. (SC+OL) + 1 N.O. Aux. Contact

**i**

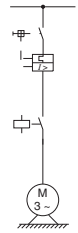
Modifications, Accessories	
Circuit Breaker Accessories	
Code	Description
TE	Spacing Adapter
KN	Lockable Twist Knob, Black
KY	Lockable Twist Knob, Red/Yellow
Additional CB Auxiliaries (Side Mount)	
Code	Description
A02	2 N.C.
A20	2 N.O.
A11	1 N.O. + 1 N.C.
Additional CB Trip Contacts (Side Mount)	
Code	Description
R00	1 N.O. Thermal-Mag + 1 N.O. Mag Only
R01	1 N.O. Thermal-Mag + 1 N.C. Mag Only
R10	1 N.C. Thermal-Mag + 1 N.O. Mag Only
R11	1 N.C. Thermal-Mag + 1 N.C. Mag Only
M11	1 N.O. Mag Only + 1 N.C. Mag Only
Coil Accessories	
Code	Description
JE	Electronic Interface(s)
D	Surge Suppressor Diode
R	Surge Suppressor RC
V	Surge Suppressor Varistor
Additional Contactor Auxiliaries (Side Mount)	
Code	Description
S01	1 N.C.
S10	1 N.O.
S11	1 N.O. + 1 N.C.
S20	2 N.O.
Additional Contactor Auxiliaries (Front Mount)	
Code	Description
F11	1 N.O. + 1 N.C.
F20	2 N.O.
F22	2 N.O. + 2 N.C.



### Bulletin 190E Direct On-Line Eco Starters

**Note:** Verify that the motor protection circuit breaker can be set to the rated motor current!

- 190E/191E Modular Eco Starter using Bulletin 140M Motor Protection Circuit Breaker and Bulletin 100-K/104-K Mini Contactors and Bulletin 100-C/104-C MCS Contactors
- Mounting Options:  
Snap Fixing on (1) 35 mm top hat rail



## 2

### Group Motor, Type E and Type F Combination Motor Controllers (UL/CSA)

The 190E/191E motor controllers can be used in a variety of applications. These starters can be used in a group motor application or as a stand-alone product without any additional short-circuit protection in the motor branch circuits.

Most of the 140M-C/D motor protection circuit breakers used in the 190E/191E starters are UL Listed as a manual Type E self-protected combination motor controller. Although there are many tests involved, one of the critical tests a self-protected combination motor controller must pass is to perform 6000 electrical ops. and an additional 4000 mechanical ops. after a short circuit.

By definition, a Type F combination motor controller consists of a Type E manual self protected combination motor controller and a magnetic or solid-state motor controller (such as a 100-C contactor or an SMC). As with a manual Type E self-protected combination motor controller, additional short-circuit protection is not required for the individual motor circuits.

A combination of a 140M manual self protected combination motor controller and 100-C contactor can be listed as a Type E self-protected combination motor controller. In this case, the 140M and 100-C must pass the additional 6000 electrical and 4000 mechanical operational test. In some cases, this may require over sizing of the 140M motor protection circuit breaker or the 100-C contactor to achieve weld-free performance and meet the additional life requirements.

## UL/CSA in Group Motor Installations

Motor Current Adjustment Range [A]	UL/CSA Hp Ratings (60 Hz)				Max. Fuse or Circuit Breaker per NEC [A]	Max. Short-Circuit Current [kA]				DOL Starter	Reversing Starter
	Hp Ratings as a UL508 Motor Controller in Group Motor Installations*					Type 1 Coordination		Type 2 Coordination			
	200V	230V	460V	575V		480V	600V	480V	600V	Cat. No.	Cat. No.
<b>C-Frame with 100-K/104-K Mini Contactors</b>											
0.10...0.16	—	—	—	—	450	65	47	65	—	190E-KMN2-CA16X	191E-KMN1-CA16X
0.16...0.25	—	—	—	—	450	65	47	65	—	190E-KMN2-CA25X	191E-KMN1-CA25X
0.25...0.40	—	—	—	—	450	65	47	65	—	190E-KMN2-CA40X	191E-KMN1-CA40X
0.40...0.63	—	—	—	—	450	65	47	65	—	190E-KMN2-CA63X	191E-KMN1-CA63X
0.63...1.00	—	—	1/2	3/4	450	65	47	65	—	190E-KMN2-CB10X	191E-KMN1-CB10X
1.00...1.60	—	—	1/2...1	3/4...1	450	65	47	65	—	190E-KMN2-CB16X	191E-KMN1-CB16X
1.60...2.50	1/2	1/2...3/4	3/4...1-1/2	1...2	450	65	30	—	—	190E-KMN2-CB25X	191E-KMN1-CB25X
2.50...4.00	1/2...1	3/4...1	1-1/2...3	2...3	450	65	30	—	—	190E-KMN2-CB63X	191E-KMN1-CB63X
4.00...6.30	1...1-1/2	1...2	3...5	5	450	65	30	—	—	190E-KNN2-CB63X	191E-KNN1-CB63X
6.30...9.00	1-1/2...2	2	5	5	450	65	30	—	—	190E-KNN2-CC10X	191E-KNN1-CC10X
6.30...10.0	1-1/2...3	2...3	5...7-1/2	7-1/2	450	65	30	—	—	190E-KPN2-CC10X	191E-KPN1-CC10X
10.0...11.0	3	3	7-1/2	7-1/2	450	30	30	—	—	190E-KPN2-CC16X	191E-KPN1-CC16X
<b>C-Frame with 100-C/104-C Contactors</b>											
0.10...0.16	—	—	—	—	450	65	47	65	47	190E-AN2-CA16X	191E-AN3-CA16X
0.16...0.25	—	—	—	—	450	65	47	65	47	190E-AN2-CA25X	191E-AN3-CA25X
0.25...0.40	—	—	—	—	450	65	47	65	47	190E-AN2-CA40X	191E-AN3-CA40X
0.40...0.63	—	—	—	—	450	65	47	65	47	190E-AN2-CA63X	191E-AN3-CA63X
0.63...1.00	—	—	1/2	3/4	450	65	47	65	47	190E-AN2-CB10X	191E-AN3-CB10X
1.00...1.60	—	—	1/2...1	3/4...1	450	65	47	65	47	190E-AN2-CB16X	191E-AN3-CB16X
1.60...2.50	1/2	1/2...3/4	3/4...1-1/2	1...2	450	65	30	65	10	190E-AN2-CB25X	191E-AN3-CB25X
2.50...4.00	1/2...1	3/4...1	1-1/2...3	2...3	450	65	30	50	—	190E-AN2-CB40X	191E-AN3-CB40X
4.00...6.30	1...1-1/2	1...2	3...5	5	450	65	30	50	—	190E-AN2-CB63X	191E-AN3-CB63X
6.30...9.00	1-1/2...2	2	5	7-1/2	450	65	30	50	—	190E-AN2-CC10X	191E-AN3-CC10X
6.30...10.0	1-1/2...3	2...3	5...7-1/2	7-1/2...10	450	65	30	50	—	190E-BN2-CC10X	191E-BN3-CC10X
10.0...12.0	3	3	7-1/2	10	450	30	30	—	—	190E-BN2-CC16X	191E-BN3-CC16X
10.0...16.0	3...5	5	7-1/2...10	10...15	450	30	30	—	—	190E-DN2-CC16X	191E-DN3-CC16X
14.5...20.0	5	5...7-1/2	15	15	450	30	30	—	—	190E-DN2-CC20X	191E-DN3-CC20X
18.0...23.0	5	7-1/2	15	15	450	30	30	—	—	190E-DN2-CC25X	191E-DN3-CC25X
<b>D-Frame with 100-C/104-C Contactors</b>											
1.60...2.50	1/2	1/2...3/4	3/4...1-1/2	1...2	450	65	30	65	10	190E-AN2-DB25X	191E-AN3-DB25X
1.60...2.50	1/2	1/2...3/4	3/4...1-1/2	1...2	450	65	30	65	30	190E-DN2-DB25X	191E-DN3-DB25X
2.50...4.00	1/2...1	3/4...1	1-1/2...3	2...3	450	65	30	65	—	190E-AN2-DB40X	191E-AN3-DB40X
2.50...4.00	1/2...1	3/4...1	1-1/2...3	2...3	450	65	30	65	30	190E-DN2-DB40X	191E-DN3-DB40X
4.00...6.30	1...1-1/2	1...2	3...5	5	450	65	30	65	—	190E-AN2-DB63X	191E-AN3-DB63X
6.30...9.00	1-1/2...2	2	5	7-1/2	450	65	30	65	—	190E-AN2-DC10X	191E-AN3-DC10X
6.30...10.0	1-1/2...3	2...3	5...7-1/2	7-1/2...10	450	65	30	65	—	190E-BN2-DC10X	191E-BN3-DC10X
6.30...10.0	1-1/2...3	2...3	5...7-1/2	7-1/2...10	450	65	30	65	—	190E-CN2-DC10X	191E-CN3-DC10X
10.0...12.0	3	3	7-1/2	10	450	65	30	65	—	190E-BN2-DC16X	191E-BN3-DC16X
10.0...16.0	3...5	5	7-1/2...10	10	450	65	30	65	—	190E-CN2-DC16X	191E-CN3-DC16X
10.0...16.0	3...5	5	7-1/2...10	10...15	450	65	30	65	—	190E-DN2-DC16X	191E-DN3-DC16X
14.5...20.0	5	5...7-1/2	15	15	450	65	30	65	—	190E-DN2-DC20X	191E-DN3-DC20X
18.0...23.0	5	7-1/2	15	15	450	65	30	65	—	190E-DN2-DC25X	191E-DN3-DC25X

\* Hp ratings shown in the table are for reference. Final selection of the starter depends upon the actual motor full-load current.

⊗Coil voltage code—see page 2-363

UL/CSA as a UL508 Type F Combination Motor Controller

2

Motor Current Adjustment Range [A]	UL/CSA Hp Ratings (60 Hz)				Max. Short-Circuit Current [kA]				DOL Starter Cat. No.	Reversing Starter Cat. No.
	Hp Ratings as a UL508 Type F Combination Motor Controller*				Type 1 Coordination		Type 2 Coordination			
	200V	230V	460V	575V	480Y/277V	600Y/347V	480Y/277V	600Y/347V		
C-Frame with Bulletin 100-K/104-K Mini Contactors										
0.10...0.16	—	—	—	—	65	47	65	—	190E-KMN®2-CA16X-TE	191E-KMN®1-CA16X-TE
0.16...0.25	—	—	—	—	65	47	65	—	190E-KMN®2-CA25X-TE	191E-KMN®1-CA25X-TE
0.25...0.40	—	—	—	—	65	47	65	—	190E-KMN®2-CA40X-TE	191E-KMN®1-CA40X-TE
0.40...0.63	—	—	—	—	65	47	65	—	190E-KMN®2-CA63X-TE	191E-KMN®1-CA63X-TE
0.63...1.00	—	—	1/2	3/4	65	47	65	—	190E-KMN®2-CB10X-TE	191E-KMN®1-CB10X-TE
1.00...1.60	—	—	1/2...1	3/4...1	65	47	65	—	190E-KMN®2-CB16X-TE	191E-KMN®1-CB16X-TE
1.60...2.50	1/2	1/2...3/4	3/4...1-1/2	3/4...2	65	30	—	—	190E-KMN®2-CB25X-TE	191E-KMN®1-CB25X-TE
2.50...4.00	1/2...1	3/4...1	1-1/2...3	2...3	65	30	—	—	190E-KMN®2-CB40X-TE	191E-KMN®1-CB40X-TE
4.00...6.30	1...1-1/2	1...2	3...5	—	65	⊕	—	⊕	190E-KNN®2-CB63X-TE	191E-KNN®1-CB63X-TE
6.30...9.00	1-1/2...2	2	5	—	65	⊕	—	⊕	190E-KNN®2-CC10X-TE	191E-KNN®1-CC10X-TE
6.30...10.0	1-1/2...3	2...3	5...7-1/2	—	65	⊕	—	⊕	190E-KPN®2-CC10X-TE	191E-KPN®1-CC10X-TE
10.0...11.0	3	3	7-1/2	—	30	⊕	—	⊕	190E-KPN®2-CC16X-TE	191E-KPN®1-CC16X-TE
C-Frame with Bulletin 100-C/104-C Contactors										
0.10...0.16	—	—	—	—	65	47	65	47	190E-AN®2-CA16X-TE	191E-AN®3-CA16X-TE
0.16...0.25	—	—	—	—	65	47	65	47	190E-AN®2-CA25X-TE	191E-AN®3-CA25X-TE
0.25...0.40	—	—	—	—	65	47	65	47	190E-AN®2-CA40X-TE	191E-AN®3-CA40X-TE
0.40...0.63	—	—	—	—	65	47	65	47	190E-AN®2-CA63X-TE	191E-AN®3-CA63X-TE
0.63...1.00	—	—	1/2	3/4	65	47	65	47	190E-AN®2-CB10X-TE	191E-AN®3-CB10X-TE
1.00...1.60	—	—	1/2...1	3/4...1	65	47	65	47	190E-AN®2-CB16X-TE	191E-AN®3-CB16X-TE
1.60...2.50	1/2	1/2...3/4	3/4...1-1/2	1...2	65	30	65	10	190E-AN®2-CB25X-TE	191E-AN®3-CB25X-TE
2.50...4.00	1/2...1	3/4...1	1-1/2...3	2...3	65	30	—	—	190E-AN®2-CB40X-TE	191E-AN®3-CB40X-TE
4.00...6.30	1...1-1/2	1...2	3...5	—	65	⊕	—	⊕	190E-AN®2-CB63X-TE	191E-AN®3-CB63X-TE
6.30...9.00	1-1/2...2	2	5	—	65	⊕	—	⊕	190E-AN®2-CC10X-TE	191E-AN®3-CC10X-TE
6.30...10.0	1-1/2...3	2...3	5...7-1/2	—	65	⊕	—	⊕	190E-BN®2-CC10X-TE	191E-BN®3-CC10X-TE
10.0...12.0	3	3	7-1/2	—	30	⊕	—	⊕	190E-BN®2-CC16X-TE	191E-BN®3-CC16X-TE
10.0...16.0	3...5	5	7-1/2...10	—	30	⊕	—	⊕	190E-CN®2-CC16X-TE	191E-CN®3-CC16X-TE
10.0...16.0	3...5	5	7-1/2...10	—	30	⊕	—	⊕	190E-DN®2-CC16X-TE	191E-DN®3-CC16X-TE
14.5...20.0	5	5...7-1/2	15	—	10	⊕	—	⊕	190E-DN®2-CC20X-TE	191E-DN®3-CC20X-TE
18.0...23.0	—	—	—	—	⊕	⊕	⊕	⊕	190E-DN®2-CC25X-TE	191E-DN®3-CC25X-TE
D-Frame with Bulletin 100-C/104-C Contactors										
1.60...2.50	1/2	1/2...3/4	3/4...1-1/2	1...2	65	30	65	10	190E-AN®2-DB25X-TE	191E-AN®3-DB25X-TE
1.60...2.50	1/2	1/2...3/4	3/4...1-1/2	1...2	65	30	65	30	190E-DN®2-DB25X-TE	191E-DN®3-DB25X-TE
2.50...4.00	1/2...1	3/4...1	1-1/2...3	2...3	65	30	65	—	190E-AN®2-DB40X-TE	191E-AN®3-DB40X-TE
2.50...4.00	1/2...1	3/4...1	1-1/2...3	2...3	65	30	65	30	190E-DN®2-DB40X-TE	191E-DN®3-DB40X-TE
4.00...6.30	1...1-1/2	1...2	3...5	5	65	30	65	—	190E-AN®2-DB63X-TE	191E-AN®3-DB63X-TE
6.30...9.00	1-1/2...2	2	5	7-1/2	65	30	65	—	190E-AN®2-DC10X-TE	191E-AN®3-DC10X-TE
6.30...10.0	1-1/2...3	2...3	5...7-1/2	7-1/2...10	65	30	65	—	190E-BN®2-DC10X-TE	191E-BN®3-DC10X-TE
6.30...10.0	1-1/2...3	2...3	5...7-1/2	7-1/2...10	65	30	65	—	190E-CN®2-DC10X-TE	191E-CN®3-DC10X-TE
10.0...12.0	3	3	7-1/2	10	65	30	65	—	190E-BN®2-DC16X-TE	191E-BN®3-DC16X-TE
10.0...16.0	3...5	5	7-1/2...10	10	65	30	65	—	190E-CN®2-DC16X-TE	191E-CN®3-DC16X-TE
10.0...16.0	3...5	5	7-1/2...10	10...15	65	30	65	—	190E-DN®2-DC16X-TE	191E-DN®3-DC16X-TE
14.5...20.0	5	5...7-1/2	15	—	65	⊕	65	⊕	190E-DN®2-DC20X-TE	191E-DN®3-DC20X-TE
18.0...23.0	5	7-1/2	15	—	65	⊕	65	⊕	190E-DN®2-DC25X-TE	191E-DN®3-DC25X-TE

\* Hp ratings shown in the table are for reference. Final selection of the starter depends upon the actual motor full-load current.

⊕ This starter is not valid for application at this horsepower and voltage.

⊗ Coil voltage code—see page 2-363



## UL/CSA as a UL508 Self-Protected Type E Combination Motor Controller

Motor Current Adjustment Range [A]	UL/CSA Hp Ratings (60 Hz)				Max. Short-Circuit Current [kA]		DOL Starter	Reversing Starter
	Hp Ratings as a UL508 Self-Protected Type E Combination Motor Controller*				480Y/277V	600Y/347V	Cat. No.	Cat. No.
	200V	230V	460V	575V				
C-Frame with Bulletin 100-K/104-K Mini Contactors								
0.10...0.16	—	—	—	—	✦	✦	190E-KMN②-CA16X-TE	191E-KMN①-CA16X-TE
0.16...0.25	—	—	—	—	✦	✦	190E-KMN②-CA25X-TE	191E-KMN①-CA25X-TE
0.25...0.40	—	—	—	—	✦	✦	190E-KMN②-CA40X-TE	191E-KMN①-CA40X-TE
0.40...0.63	—	—	—	—	✦	✦	190E-KMN②-CA63X-TE	191E-KMN①-CA63X-TE
0.63...1.00	—	—	—	—	✦	✦	190E-KMN②-CB10X-TE	191E-KMN①-CB10X-TE
1.00...1.60	—	—	—	—	✦	✦	190E-KMN②-CB16X-TE	191E-KMN①-CB16X-TE
1.60...2.50	—	—	—	—	✦	✦	190E-KMN②-CB25X-TE	191E-KMN①-CB25X-TE
2.50...4.00	—	—	—	—	✦	✦	190E-KMN②-CB40X-TE	191E-KMN①-CB40X-TE
4.00...6.30	—	—	—	—	✦	✦	190E-KNN②-CB63X-TE	191E-KNN①-CB63X-TE
6.30...9.00	—	—	—	—	✦	✦	190E-KNN②-CC10X-TE	191E-KNN①-CC10X-TE
6.30...10.0	—	—	—	—	✦	✦	190E-KPN②-CC10X-TE	191E-KPN①-CC10X-TE
10.0...11.0	—	—	—	—	✦	✦	190E-KPN②-CC16X-TE	191E-KPN①-CC16X-TE
C-Frame with Bulletin 100-C/104-C Contactors								
0.10...0.16	—	—	—	—	65	47	190E-AN②-CA16X-TE	191E-AN③-CA16X-TE
0.16...0.25	—	—	—	—	65	47	190E-AN②-CA25X-TE	191E-AN③-CA25X-TE
0.25...0.40	—	—	—	—	65	47	190E-AN②-CA40X-TE	191E-AN③-CA40X-TE
0.40...0.63	—	—	—	—	65	47	190E-AN②-CA63X-TE	191E-AN③-CA63X-TE
0.63...1.00	—	—	1/2	3/4	65	47	190E-AN②-CB10X-TE	191E-AN③-CB10X-TE
1.00...1.60	—	—	1/2...1	3/4...1	65	47	190E-AN②-CB16X-TE	191E-AN③-CB16X-TE
1.60...2.50	1/2	1/2...3/4	3/4...1-1/2	—	65	✦	190E-AN②-CB25X-TE	191E-AN③-CB25X-TE
2.50...4.00	—	—	—	—	✦	✦	190E-AN②-CB40X-TE	191E-AN③-CB40X-TE
4.00...6.30	—	—	—	—	✦	✦	190E-AN②-CB63X-TE	191E-AN③-CB63X-TE
6.30...9.00	—	—	—	—	✦	✦	190E-AN②-CC10X-TE	191E-AN③-CC10X-TE
6.30...10.0	—	—	—	—	✦	✦	190E-BN②-CC10X-TE	191E-BN③-CC10X-TE
10.0...12.0	—	—	—	—	✦	✦	190E-BN②-CC16X-TE	191E-BN③-CC16X-TE
10.0...16.0	—	—	—	—	✦	✦	190E-CN②-CC16X-TE	191E-CN③-CC16X-TE
10.0...16.0	—	—	—	—	✦	✦	190E-DN②-CC16X-TE	191E-DN③-CC16X-TE
14.5...20.0	—	—	—	—	✦	✦	190E-DN②-CC20X-TE	191E-DN③-CC20X-TE
18.0...23.0	—	—	—	—	✦	✦	190E-DN②-CC25X-TE	191E-DN③-CC25X-TE
D-Frame with Bulletin 100-C/104-C Contactors								
1.60...2.50	1/2	1/2...3/4	3/4...1-1/2	—	65	✦	190E-AN②-DB25X-TE	191E-AN③-DB25X-TE
1.60...2.50	1/2	1/2...3/4	3/4...1-1/2	1...2	65	30	190E-DN②-DB25X-TE	191E-DN③-DB25X-TE
2.50...4.00	—	—	—	—	✦	✦	190E-AN②-DB40X-TE	191E-AN③-DB40X-TE
2.50...4.00	1/2...1	3/4...1	1-1/2...3	2...3	65	30	190E-DN②-DB40X-TE	191E-DN③-DB40X-TE
4.00...6.30	—	—	—	—	✦	✦	190E-AN②-DB63X-TE	191E-AN③-DB63X-TE
6.30...9.00	—	—	—	—	✦	✦	190E-AN②-DC10X-TE	191E-AN③-DC10X-TE
6.30...10.0	—	—	—	—	✦	✦	190E-BN②-DC10X-TE	191E-BN③-DC10X-TE
6.30...10.0	—	—	—	—	✦	✦	190E-CN②-DC10X-TE	191E-CN③-DC10X-TE
10.0...12.0	—	—	—	—	✦	✦	190E-BN②-DC16X-TE	191E-BN③-DC16X-TE
10.0...16.0	—	—	—	—	✦	✦	190E-CN②-DC16X-TE	191E-CN③-DC16X-TE
10.0...16.0	—	—	—	—	✦	✦	190E-DN②-DC16X-TE	191E-DN③-DC16X-TE
14.5...20.0	—	—	—	—	✦	✦	190E-DN②-DC20X-TE	191E-DN③-DC20X-TE
18.0...23.0	—	—	—	—	✦	✦	190E-DN②-DC25X-TE	191E-DN③-DC25X-TE

\* Hp ratings shown in the table are for reference. Final selection of the starter depends upon the actual motor full-load current.

✦ This starter is not valid for application at this horsepower and voltage.

⊗Coil voltage code—see page 2-363

IEC Type 1 and Type 2 Short-Circuit Coordination

Motor Current Adjustment Range [A]	IEC kW Ratings for Standard Motors, 1500 rpm				Max. Short-Circuit Current [kA]				Max. Short-Circuit Current [kA]				DOL Starter	Reversing Starter
	Max. kW, 50 Hz*				Type 1 Coordination				Type 2 Coordination				Cat. No.	Cat. No.
	230V	400V	500V	690V	230V	400V	500V	690V	230V	400V	500V	690V		
C-Frame with Bulletin 100-K/104-K Mini Contactors														
0.10...0.16	—	0.02	—	—	100	65	65	65	65	65	—	—	190E-KMN2-CA16X	191E-KMN1-CA16X
0.16...0.25	0.02	0.06	0.06	—	100	65	65	65	65	65	—	—	190E-KMN2-CA25X	191E-KMN1-CA25X
0.25...0.40	0.06	0.09	0.12	—	100	65	65	65	65	65	—	—	190E-KMN2-CA40X	191E-KMN1-CA40X
0.40...0.63	0.09	0.18	0.18	—	100	65	65	65	65	65	—	—	190E-KMN2-CA63X	191E-KMN1-CA63X
0.63...1.00	0.12	0.25	0.37	—	100	65	65	65	65	65	—	—	190E-KMN2-CB10X	191E-KMN1-CB10X
1.00...1.60	0.25	0.55	0.75	—	100	65	65	10	65	65	—	—	190E-KMN2-CB16X	191E-KMN1-CB16X
1.60...2.50	0.55	0.75	1.1	—	100	65	65	8	50	50	—	—	190E-KMN2-CB25X	191E-KMN1-CB25X
2.50...4.00	0.75	1.5	2.2	—	100	65	65	8	—	—	—	—	190E-KMN2-CB40X	191E-KMN1-CB40X
4.00...6.30	1.5	2.2	2.2	—	100	65	65	4	—	—	—	—	190E-KMN2-CB63X	191E-KMN1-CB63X
6.30...9.00	2.2	4	4	—	100	65	65	4	—	—	—	—	190E-KMN2-CC10X	191E-KMN1-CC10X
6.30...10.0	2.2	4	4	—	100	65	65	4	—	—	—	—	190E-KPN2-CC10X	191E-KPN1-CC10X
10.0...11.0	4	5.5	—	—	100	50	50	3	—	—	—	—	190E-KPN2-CC16X	191E-KPN1-CC16X
C-Frame with Bulletin 100-C/104-C Contactors														
0.10...0.16	—	—	0.06	0.06	100	100	65	50	100	100	65	50	190E-AN2-CA16X	191E-AN3-CA16X
0.16...0.25	0.02	0.06	0.06	0.12	100	100	65	50	100	100	65	50	190E-AN2-CA25X	191E-AN3-CA25X
0.25...0.40	0.06	0.09	0.12	0.18	100	100	65	50	100	100	65	50	190E-AN2-CA40X	191E-AN3-CA40X
0.40...0.63	0.09	0.18	0.18	0.37	100	100	65	50	100	100	65	50	190E-AN2-CA63X	191E-AN3-CA63X
0.63...1.00	0.12	0.25	0.37	0.55	100	100	65	50	100	100	65	50	190E-AN2-CB10X	191E-AN3-CB10X
1.00...1.60	0.25	0.55	0.75	1.1	100	100	65	50	100	100	65	50	190E-AN2-CB16X	191E-AN3-CB16X
1.60...2.50	0.55	0.75	1.1	1.8	100	65	50	8	65	50	50	8	190E-AN2-CB25X	191E-AN3-CB25X
2.50...4.00	0.75	1.5	2.2	3	100	50	50	8	50	50	—	—	190E-AN2-CB40X	191E-AN3-CB40X
4.00...6.30	1.5	2.2	3	4	100	50	50	4	50	50	—	—	190E-AN2-CB63X	191E-AN3-CB63X
6.30...9.00	2.2	4	4	—	100	65	50	—	50	50	—	—	190E-AN2-CC10X	191E-AN3-CC10X
6.30...10.0	2.2	4	5.5	5.5	100	65	50	4	50	50	50	—	190E-BN2-CC10X	191E-BN3-CC10X
6.30...10.0	2.2	4	5.5	7.5	100	65	50	4	50	50	50	—	190E-CN2-CC10X	191E-CN3-CC10X
10.0...12.0	4	5.5	—	—	100	65	—	—	50	50	—	—	190E-BN2-CC16X	191E-BN3-CC16X
10.0...16.0	4	7.5	7.5	—	100	50	10	—	50	—	—	—	190E-CN2-CC16X	191E-CN3-CC16X
10.0...16.0	4	7.5	10	10	100	50	10	3	50	50	—	—	190E-DN2-CC16X	191E-DN3-CC16X
14.5...20.0	4	10	11	—	50	15	6	—	15	—	—	—	190E-DN2-CC20X	191E-DN3-CC20X
18.0...23.0	6.3	11	13	—	50	15	6	—	15	—	—	—	190E-DN2-CC25X	191E-DN3-CC25X
D-Frame with Bulletin 100-C/104-C Contactors														
1.60...2.50	0.55	0.75	1.1	1.8	100	100	50	10	100	100	50	10	190E-AN2-DB25X	191E-AN3-DB25X
1.60...2.50	0.55	0.75	1.1	1.8	100	100	50	10	100	100	50	10	190E-DN2-DB25X	191E-DN3-DB25X
2.50...4.00	0.75	1.5	2.2	3	100	100	50	10	100	100	50	—	190E-AN2-DB40X	191E-AN3-DB40X
2.50...4.00	0.75	1.5	2.2	3	100	100	50	50	100	100	50	50	190E-DN2-DB40X	191E-DN3-DB40X
4.00...6.30	1.5	2.2	3	4	100	100	50	50	100	100	50	—	190E-AN2-DB63X	191E-AN3-DB63X
6.30...9.00	2.2	4	4	—	100	65	50	—	100	65	—	—	190E-AN2-DC10X	191E-AN3-DC10X
6.30...10.0	2.2	4	5.5	5.5	100	100	65	50	100	100	65	—	190E-BN2-DC10X	191E-BN3-DC10X
6.30...10.0	2.2	4	5.5	7.5	100	100	65	50	100	100	65	50	190E-CN2-DC10X	191E-CN3-DC10X
10.0...12.0	4	5.5	—	—	100	65	—	—	65	65	—	—	190E-BN2-DC16X	191E-BN3-DC16X
10.0...16.0	4	7.5	7.5	—	100	65	50	—	65	65	50	—	190E-CN2-DC16X	191E-CN3-DC16X
10.0...16.0	4	7.5	10	10	100	65	50	6	65	65	50	—	190E-DN2-DC16X	191E-DN3-DC16X
14.5...20.0	4	10	11	—	65	65	25	—	65	65	25	—	190E-DN2-DC20X	191E-DN3-DC20X
18.0...23.0	6.3	11	13	—	65	50	25	—	65	50	25	—	190E-DN2-DC25X	191E-DN3-DC25X

\* kW ratings shown in the table are for reference. Final selection of the starter depends upon the actual motor full-load current.

⊗Coil voltage code—see page 2-363

2



**Bulletin 190E/191E Eco Starters with Bulletin 100-K/104-K Mini Contactors**

⊗ **Coil Voltage Codes for AC or DC Control**

Voltage [V]	24	110	120	230	240	400	480	600
50 Hz	—	D	—	—	—	—	—	—
60 Hz	—	—	D	—	—	—	B	VC
50/60 Hz	KJ	—	—	KF	KA	KN	—	—
Voltage [V]	12	24	110	125	220	250		
DC	ZQ	ZJ	ZD	ZS	ZA	ZT		
DC w/ Diode	—	DJ	—	—	—	—		

**Bulletin 190E/191E Eco Starters with Bulletin 100-C/104-C MCS Contactors**

⊗ **Coil Voltage Codes for AC or DC Control**

Voltage [V]	12	24	32	36	42	48	100	100... 110	110	120	127	200	200... 220	200... 230	208	208... 240
50 Hz	R	K	V	W	X	Y	KP	—	D	P	S	KG	L	—	—	—
60 Hz	Q	J	—	V	—	X	—	KP	—	D	—	—	KG	—	H	L
50/60 Hz	—	KJ	—	—	—	KY	KP	—	KD	—	—	KG	—	KL	—	—
Voltage [V]	220... 230	230	230... 240	240	277	347	380	380... 400	400	400... 415	440	480	500	550	600	
50 Hz	F	—	VA	T	—	—	—	N	—	G	B	—	M	C	—	
60 Hz	—	—	—	A	T	I	E	—	—	—	N	B	—	—	C	
50/60 Hz	—	KF	—	KA	—	—	—	—	KN	—	KB	—	—	—	—	
Voltage [V]	24															
DC	EJ															



Bulletin 190/191  
**Eco & Compact Combination Starters**  
 Factory-Installed Options

**Bulletin 190E/191E/190S/191S Factory-Installed Modifications**

**Note:** For modifications change (option code †) and — add (option code §) for desired features to cat. no.

\* Change option code X to desired auxiliary contact: 190E-KMND2-CA16X

Bulletin 140M Auxiliary and Trip Contacts		190E	191E	190S	191S
X	Without Auxiliary and Trip Contacts	Standard	Standard	NA	NA
A	Auxiliary Contact 1 N.C.	Available	Available	NA	NA
B	Auxiliary Contact 1 N.O.	Available	Available	NA	NA
C	Auxiliary Contact 1 N.O. + 1 N.C.	Available	Available	Standard	Standard
D	Auxiliary Contact 2 N.O.	Available	Available	Available	Available
E	Auxiliary Contact 2 N.C.	Available	Available	Available	Available
R	1 N.O. Trip + 1 N.C. Auxiliary Contact	Available	Available	Available	Available
S	1 N.O. Trip + 1 N.O. Auxiliary Contact	Available	Available	Available	Available

‡ Add desired option codes AFTER auxiliary contact option code: 190S-AND2-CA16X-KY

Modifications, Accessories		190E	191E	190S	191S
JE †	Electronic Interfaces (100-C)	Available	Available	Available	Available
R †	Surge Suppressor RC (100-C)	Available	Available	Available	Available
V †	Surge Suppressor Varistor (100-C)	Available	Available	Available	Available
D †	Surge Suppressor Diode (100-C)	Available	Available	Available	Available
KN	Lockable Twist Knob (140M) - Black	Available	Available	Available	Available
KY	Lockable Twist Knob (140M) - Red/Yellow	Available	Available	Available	Available
TE	Spacing Adapter for UL508 Type E and Type F	Available	Available	Available	Available

**Additional Contactor Auxiliaries (Side Mount) §**

S01 †	1 N.C.	Available	Available	Available	Available
S10 †	1 N.O.	Available	Available	Available	Available
S11 †	1 N.O. + 1 N.C.	Available	Available	Available	Available
S20 †	2 N.O.	Available	Available	Available	Available

**Additional Contactor Auxiliaries (Front Mount)**

F11 †	1 N.O. + 1 N.C.	Available	Available	NA	NA
F20 †	2 N.O.	Available	Available	NA	NA
F22 †	2 N.O. + 2 N.C.	Available	Available	NA	NA

**Additional Bulletin 140M Auxiliaries (Side Mount)**

A02	2 N.C.	Available	Available	Available	Available
A20	2 N.O.	Available	Available	Available	Available
A11	1 N.O. + 1 N.C.	Available	Available	Available	Available

**Additional Bulletin 140M Trip Contacts (Side Mount)**

R00	1 N.O. Thermal-Mag + 1 N.O. Mag Only	Available	Available	Available	Available
R01	1 N.O. Thermal-Mag + 1 N.C. Mag Only	Available	Available	Available	Available
R10	1 N.C. Thermal-Mag + 1 N.O. Mag Only	Available	Available	Available	Available
R11	1 N.C. Thermal-Mag + 1 N.C. Mag Only	Available	Available	Available	Available
M11	1 N.O. Mag Only + 1 N.C. Mag Only	Available	Available	Available	Available

† 191E and 191S Reversing Eco Starters will have two of these accessories installed (one on each contactor).

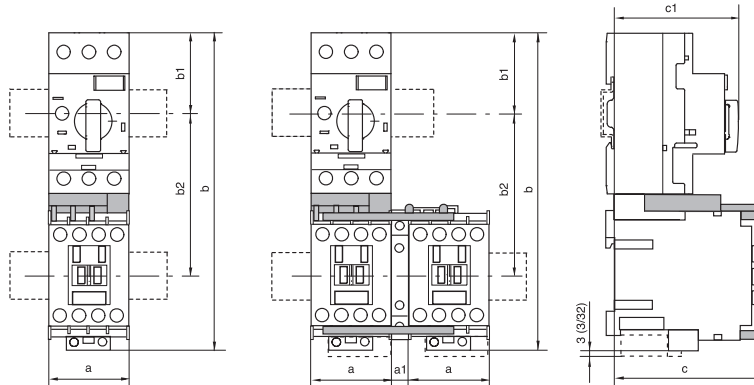
§ Not available on 190E/191E Eco starters with 100-K/104-K mini contactors.

2



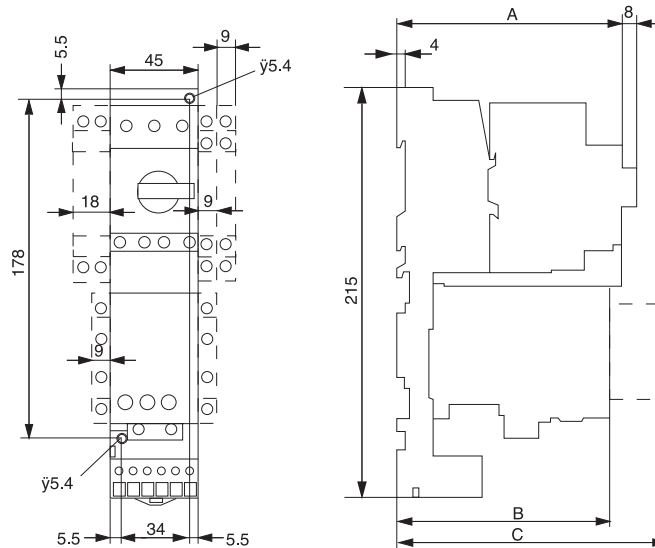
Dimensions are shown in millimeters. Dimensions are not intended to be used for manufacturing purposes.

**190E/191E-A...D**



Cat. No.	a	a1	b	b1	b2	c	c1
<b>190E Eco Starters</b>							
190E-AN...190E-DN	45 (1-25/32)	0	178 (7)	45 (1-25/32)	—	83.5 (3-19/64)	70 (2-49/64)
<b>191E Reversing Eco Starters</b>							
191E-AN...191E-DN	45 (1-25/32)	9 (23/64)	178 (7)	45 (1-25/32)	—	83.5 (3-19/64)	70 (2-49/64)

**190S-A...D**



Front View	Side View	A [mm]	B [mm]
	140M-C	112	107
	140M-D	122	
	140M-C	134.5	132.5
	140M-D	144.5	
	140M-C	157	150
	140M-D	167	

Front View	C [mm]	
	100-FA, 100-FC	138
	100-FPT	157
	100-FL	160
	100-FA, 100-FC	163.5
	100-FA, 100-FC	181