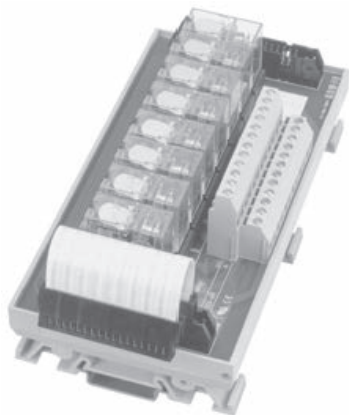


Digital Relay Expander (8 Outputs)



Relay Expander
 Cat. No. 1492-XIM24-8R, 1492-XIM24-16RF, 1492-XIM120-8R

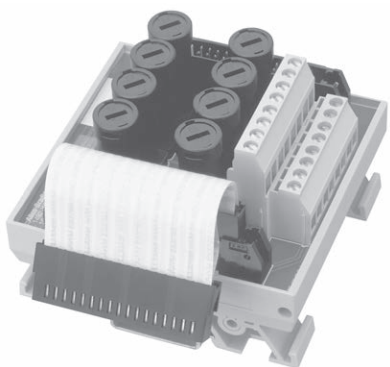
Digital Relay Expander (16 Outputs) with Fusing



Relay Masters with Fusing
 For 20-point: Cat. No. 1492-XIM2024-16RF, 1492-XIM20120-16RF
 For 40-point: Cat. No. 1492-XIM4024-16R

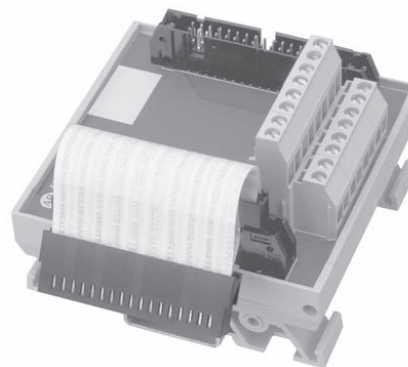
Relay expander XIMs feature field-replaceable relays with 120V or 24V rated coils. The field-side Form C contacts are rated 240V 10 A (de-rated to 12 A per adjacent pair on the XIM). The Form C relay output provides isolated output channels and a different voltage level from one output channel to the next. Other features include coil-side LED indicating the output module status, and transient suppression on each coil. In addition, a relay expander can have 5x20 fuse holders so customers can fuse the output contacts. An expander cable is provided for connection to the mating module.

Fusible Expanders



Fused Expander Products
 Cat. No. 1492-XIMF24-2, 1492-XIMF-120-2

Feed-Through Expanders



Feedthrough Expander Products
 Cat. No. 1492-XIMF-2

The fusible expander modules feature eight 5 x 20 finger-safe fuse holders, blown fuse indicators, and extra terminals for landing two wires per field-side device. They are offered with eight fuse holders for both 24V and 120V applications. An expander cable is provided for connection to its mating module.

The feed-through expander modules feature eight channels with extra terminals for landing two wires per field-side device. An expander cable is provided for connection to its mating module.

Relay XIMs and Cables for Bulletin 1756 ControlLogix 8-point and 16-point I/O Modules

Voltage [V]	Term. per I/O	Description	Fixed Terminal Block Cat. No.	Removable Terminal Block Cat. No.	RTB Plugs ❖ Cat. No.	Bulletin 1756 ControlLogix I/O Module											
						1756-IA8D	1756-IA16	1756-IB16	1756-IC16	1756-IN16	1756-IV16	1756-OA8	1756-OA8D	1756-OA8E	1756-OA16	1756-OB8	1756-OB16E
						Digital Cable Cat. No. Suffix †											
Relay Master, LED Indicating §❖																	
24	1	8 Relays	1492-XIM2024-8R	—	—											X	
	1	16 Relays	1492-XIM2024-16R	—	—											X	
	1	16 Relays w/Fusing	1492-XIM2024-16RF	—	—											X	
120	1	8 Relays	1492-XIM20120-8R	—	—											X	
	1	16 Relays	1492-XIM20120-16R	—	—											X	
	1	16 Relays w/Fusing	1492-XIM20120-16RF	—	—											X	
High Density Relay Master, LED Indicating §❖																	
24	1	16 Relays - Mechanical	1492-XIMTR2024-16R	1492-RXIMTR2024-16R	1492-RTB20❖											X	
	1	16 Relays - Solid-State	1492-XIMTS2024-16R	1492-RXIMTS2024-16R	—											X	
Relay Expander, LED Indicating §❖																	
24	1	8 Relays	1492-XIM24-8R	1492-RXIM24-8R	1492-RTB12❖											*	
120	1	8 Relays	1492-XIM120-8R	—	—										*		
Fusible Expander																	
120	2	8-ch - blown fuse indication	1492-XIMF-F24-2	—	—											*	
120	2	8-ch - blown fuse indication	1492-XIMF-F120-2	—	—										*		
Feed-Through Expander																	
120	2	8-ch	1492-XIMF-2	—	—										*	*	

† To order a Pre-wired Cable, add the appropriate **letter** from the selection table above to the end of the **Cat. No.** below.

0.5M Cable = 1492-CABLE005_
 1.0M Cable = 1492-CABLE010_
 2.5M Cable = 1492-CABLE025_
 5.0M Cable = 1492-CABLE050_

Custom Length Cable = 1492-CABLEXXX_. See Catalog Number Explanation on page 12-137 for available Custom Length Codes to replace XXX in Cat. No.

❖ Order plugs separately (two plugs per catalog number). Plugs are available in screw style and push in style terminal types. To order, replace the ❖ in the catalog number with the code for the desired terminal style. The code for screw style is **N** and the code for push in style is **P**.

* Can have up to one (1) expander module depending upon master used (total 16 outputs or less). An extender cable is provided.

❖ LED indicating PLC output status

§ The voltage rating is relay control/coil voltage. For relay contact ratings, refer to page 9-42.

Relay XIMs and Cables for Bulletin 1769 CompactLogix 8-Point and 16-Point I/O Modules

Voltage M	Term. per I/O	Description	Fixed Terminal Block Cat. No.	Removable Terminal Block Cat. No.	RTB Plugs ❖	Bulletin 1769 CompactLogix I/O Module																						
						1769-IA8I	1769-IA16	1769-IQ16	1769-IQ16F	1769-IM12	1769-OA8	1769-OA16	1769-OB8	1769-OB16	1769-OV16	1769-OW8	1769-OW8I	1769-OW16										
						Digital Cable Cat. No. Suffix ⁺																						
Relay Master (LED Indicating)[⚡]>																												
24	1	8 DC Relays	1492-XIM2024-8R	—	—											E69												
120	1	8 AC Relays	1492-XIM20120-8R	—	—											H69												
24	1	16 DC Relays	1492-XIM2024-16R	—	—																							
24	1	16 DC Relays w/fusing	1492-XIM2024-16RF	—	—																							
120	1	16 AC Relays	1492-XIM20120-16R	—	—											H69												
120	1	16 AC Relays w/ fusing	1492-XIM20120-16RF	—	—											H69												
High Density Relay Master, LED Indicating[⚡]>																												
24	1	16 Relays - Mechanical	1492-XIMTR2024-16R	1492-RXIMTR2024-16R	1492-RTB20❖																							
24	1	16 Relays - Solid-State	1492-XIMTS2024-16R	1492-RXIMTS2024-16R	1492-RTB20❖																							
Relay Expander (LED Indicating)[⚡]>																												
24	1	Expander w/ 8 DC relays	1492-XIM24-8R	1492-RXIM24-8R	1492-RTB12❖																							
120	1	Expander w/ 8 DC relays	1492-XIM120-8R	—	—																							
Fusible Expander																												
24	2	8-ch w/ blown fuse LED	1492-XIMF-F24-2	—	—																							
120	2	8-ch w/ blown fuse LED	1492-XIMF-F120-2	—	—																							
Feed-Through Expander																												
120	2	8-ch Expander	1492-XIMF-2	—	—																							

⁺ To order a Pre-wired Cable, add the **Suffix No.** from the table above to the end of the **Cat. No.** below.

0.5M Cable = 1492-CAB005_
 1.0M Cable = 1492-CAB010_
 2.5M Cable = 1492-CAB025_
 5.0M Cable = 1492-CAB050_

Custom Length Cable = 1492-CABXXX_. See Catalog Number Explanation on page 12-136 for available Custom Length Codes to replace XXX in Cat. No.

❖ Order plugs separately (two plugs per catalog number). Plugs are available in screw style and push in style terminal types. To order, replace the ❖ in the catalog number with the code for the desired terminal style. The code for screw style is **N** and the code for push in style is **P**.

* In the input module's sink mode only.

⊛ One expander module is connected to a master to provide a total of 16 outputs. An extender cable is included with each expander to connect it to the master.

§ This IFM is not recommended for use the PLC I/O modules that have an off-state leadkage current exceeding 0.5 mA. Use a 1492-IFM20D120N or 1492-IFM20D120A-2 for inputs. Use 1492-IFM20D120-2 for outputs.

> The LED indicates the PLC output status.

⚡ The voltage rating is relay control/coil voltage. For relay contact ratings, refer to page 9-42.

Programmable Controller Wiring Systems

Bulletin 1794 Flex I/O Modules

Relay XIMs and Cables for Bulletin 1794 Flex I/O 8-Point and 16-Point Modules

Voltage [V]	Term. per I/O	Description	Fixed Terminal Block Cat. No.	Removable Terminal Block Cat. No.	RTB Plugs ❖ Cat. No.	Bulletin 1794 Flex Digital I/O Module ❖											
						1794-IB16	1794-IB8	1794-IB10XOB6	1794-IV16	1794-OB16	1794-OB16P	1794-OB8	1794-OB8EP	1794-OV16	1794-OV16P	1794-OW8	
Digital Cable Cat. No. Suffix †																	
Relay Master (LED Indicating)§*																	
24	1	8 Relays	1492-XIM2024-8R	—	—				A94	A94	A94						
	1	16 Relays	1492-XIM2024-16R	—	—				A94	A94							
	1	16 Relays w/ fusing	1492-XIM2024-16RF	—	—				A94	A94							
Relay Expander (LED Indicating)§*																	
24	1	8-ch Expander	1492-XIM24-8R	1492-RXIM24-8R	1492-RTB12❖				*	*							
Fusible Expander																	
24	2	8-ch Expander	1492-XIMF-F24-2	—	—				*	*							
Feed-Through Expander																	
24...120	2	8-ch Expander	1492-XIMF-2	—	—				*	*							

Relay XIMs and Cables for Bulletin 1794 Flex I/O 16-Point and 32-Point Modules

Voltage [V]	Term. per I/O	Description	Fixed Terminal Block Cat. No.	Removable Terminal Block Cat. No.	RTB Plugs ❖ Cat. No.	Bulletin 1794 Flex Digital I/O Module			
						1794-IB16D	1794-IB16XOB16P	1794-IB32	1794-OB32P
Digital Cable Cat. No. Suffix †									
Relay Master (LED Indicating)§*									
24	1	8 Relays	1492-XIM4024-8R	—	—				B94
24	1	16 Relays	1492-XIM4024-16R	1492-RXIM4024-16R	1492-RTB14❖				B94
24	1	16 Relays w/ fusing	1492-XIM4024-16RF	—	—				B94
Relay Expander (LED Indicating)§*									
24	1	8 Relay Expander	1492-XIM24-8R	1492-RXIM24-8R	1492-RTB12❖				*
Fusible Expander									
24	2	8-ch Expander, Blown Fuse LED	1492-XIMF-F24-2	—	—				*
24	1	16-ch Expander, Blown Fuse LED	1492-XIM24-16RF	—	—				*
Feed-Through Expander									
120	2	8-ch	1492-XIMF-2	—	—				*

† To order a Pre-wired Cable, add the **Suffix No.** from the table above to the end of the **Cat. No.** below.

- 0.5M Cable = 1492-CAB005_
- 1.0M Cable = 1492-CAB010_
- 2.5M Cable = 1492-CAB025_
- 5.0M Cable = 1492-CAB050_

Custom Length Cable = 1492-CABXXX_. See Catalog Number Explanation on page 12-136 for available Custom Length Codes to replace XXX in Cat. No.

❖ Order plugs separately (two plugs per catalog number). Plugs are available in screw style and push in style terminal types. To order, replace the ❖ in the catalog number with the code for the desired terminal style. The code for screw style is **N** and the code for push in style is **P**.

* Two or three expanders are connected to a master to provide a total of 32 outputs max (depends on PLX module). And extender cable is included with each expander to connect it to the master.

❖ One 1492-XIM24-16RF is to be used with one 1492-XIM4024-16R and 1492-XIM4024-16RF master (32 pt. only).

♣ The LED indicates the PLC output status.

➤ Uses D-Shell Base 1794-TB62DS

§ The voltage rating is relay control/coil voltage. For relay contact ratings, refer to page 9-42.

Analog IFM Specifications

Analog IFM Cat. No.	Voltage Range	Max. Current (Per Circuit) [A]	Max. Current (Per Module) [A]	Dimensions (W x H x D) [in.]	Indicator Circuit Current (Nominal) [mA]	Label Card Cat. No.*
1492-AIFM4-3, -RAIFM4-3	0...10V DC	2	12	2.36 x 3.27 x 2.74‡	—	46006-205-01
1492-AIFM4C-F-5	10...30V DC	2	12	3.15 x 3.27 x 2.74	2	46006-203-01
1492-AIFM4I-F-5	10...30V DC	2	12	3.15 x 3.27 x 2.74	2	46006-203-01
1492-AIFM6S-3, -RAIFM6S-3	0...132V AC/DC	2	12	3.15 x 3.27 x 2.74‡	—	46006-202-01
1492-AIFM6TC-3	0...132V AC/DC	2	12	3.15 x 3.27 x 2.74	—	46006-202-01
1492-AIFMCE4	5...32V AC/DC	2	8	5.12 x 3.27 x 2.74	—	46006-232-01
1492-AIFMCE4-F	5...32V AC/DC	2	8	5.12 x 3.27 x 2.74	1 mA @ 5V DC 6 mA @ 24V DC	46006-232-01
1492-AIFM8-3, -RAIFM8-3	0...132V AC/DC	2	12	4.33 x 3.27 x 2.74‡	—	46006-200-01, 46006-238-01
1492-AIFM8-F-5	10...30V DC	2	12	4.72 x 3.27 x 2.74	2	46006-196-01, -254-01
1492-AIFM16-F-3	10...30V DC	2	12	4.72 x 3.27 x 2.74	2	46006-213-01
1492-AIFM16-F-5	10...30V DC	2	12	8.27 x 3.27 x 2.74	2	46006-198-01
1492-AIFMQS	10...30V DC	3	12	4.72 x 3.27 x 2.74	2	46006-199-01
1492-AIFMPI	0...30V DC	2	12	4.72 x 3.27 x 2.74	2	46006-243-01
1492-TAIFM16-F-3	24V DC	2	12	9.88 x 3.27 x 2.74	2	46006-231-01

* Ships with each module. For spare part, precede the part number with the letter "W."
 ‡ Add 0.39 in. to the width dimension for Bulletin 1492-Rxxx modules.

Relay Master/Expandable Interface Module Specifications

Relay Master/Expandable XIM Cat. No.	Voltage Range	Max. Current (Per Circuit/Per Relay Pair) [A]	Max. Current (Per Module) [A]	Dimensions (W x H x D) [in.]	Indicator Circuit Current (Nominal) [mA]	Label Card Cat. No.*
1492-XIM4024-16R, -RXIM4024-16R	20...26V DC	10/12	96	9.06 x 3.27 x 2.78	2	46006-222-01
1492-XIM4024-8R	20...26V DC	10/12	48	6.30 x 3.27 x 2.78	2	46006-216-01
1492-XIM2024-8R	20...26V AC	10/12	48	6.30 x 3.27 x 2.78	2	46006-216-01
1492-XIM20120-8R	96...132V AC	10/12	48	6.30 x 3.27 x 2.78	2	46006-216-01
1492-XIM24-8R, RXIM24-8R	20...26V AC	10/12	48	6.30 x 3.27 x 2.78	2	46006-217-01
1492-XIM120-8R	96...132V AC	10/12	48	6.30 x 3.27 x 2.78	2	46006-217-01
1492-XIM2024-16R	20...26V DC	10/12	96	10.65 x 3.27 x 2.78	2	46006-223-01
1492-XIM2024-16RF	20...26V DC	10/12	96	10.65 x 3.27 x 2.78	2	46006-223-01
1492-XIM20120-16R	96...132V AC	10/12	96	10.65 x 3.27 x 2.78	2	46006-223-01
1492-XIM20120-16RF	96...132V DC	10/12	96	10.65 x 3.27 x 2.78	2	46006-223-01
1492-XIM4024-16RF	20...26V AC	10/12	96	11.5 x 3.27 x 2.78	2	46006-223-01
1492-XIMF-2	0...132V AC/DC	2/NA	4	3.15 x 3.27 x 2.19	—	46006-218-01
1492-XIMF-F24-2	10...30V DC	2/NA	4	3.15 x 3.27 x 2.19	2	46006-218-01
1492-XIMF-F120-2	85...132V AC	2/NA	4	3.15 x 3.27 x 2.19	2	46006-218-01
1492-XIM24-16RF	20...26V AC	10/12	96	11.5 x 3.27 x 2.78	2	46006-219-01
1492-XIMTR2024-16R, -RXIMTR2024-16R	24 V DC	4	64	4.72 x 3.27 x 2.74	2	46006-257-01
1492-XIMTR4024-32R, -RXIMTR4024-32R	24 V DC	4	128	9.45 x 3.27 x 2.74	2	46006-257-01
1492-XIMTS2024-16R, -RXIMTS2024-16R	24 V DC	.75	12	4.72 x 3.27 x 2.74	2	46006-257-01
1492-XIMTS4024-32R, -RXIMTS4024-32R	24 V DC	.75	24	9.45 x 3.27 x 2.74	2	46006-257-01

* Ships with each module. For spare part, precede the part number with the letter "W."