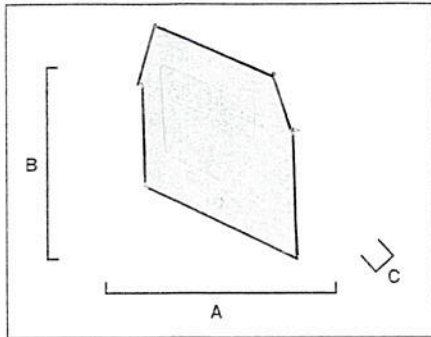


Bulletin 1492
Accessories
End Barriers

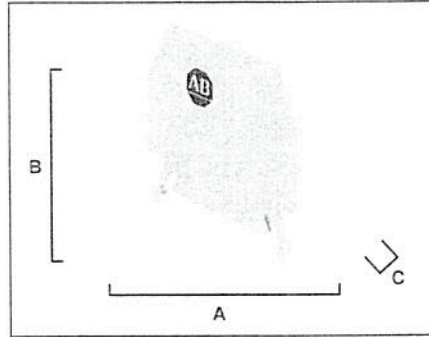
IEC

1492-EB3, 1492-EB3-Y,
1492-EB10, 1492-EB10-Y,
1492-EBM3, 1492-EBM4



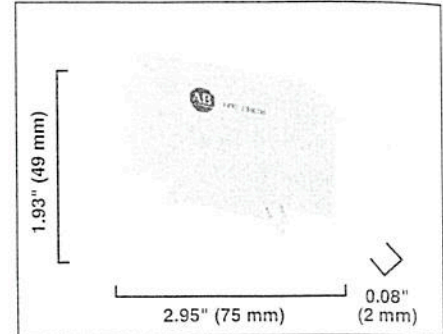
Cat. No.	A	B	C
1492-EB3	1.46" (37 mm)	1.38" (35 mm)	0.06" (1.5 mm)
1492-EB3-Y	1.77" (45 mm)	1.61" (41 mm)	0.06" (1.5 mm)
1492-EBM3	1.10" (28 mm)	0.97" (24.6 mm)	0.06" (1.5 mm)
1492-EBM4	1.22" (31 mm)	1.09" (27.7 mm)	0.06" (1.5 mm)

1492-EB16, 1492-EB35,
1492-EBD4N

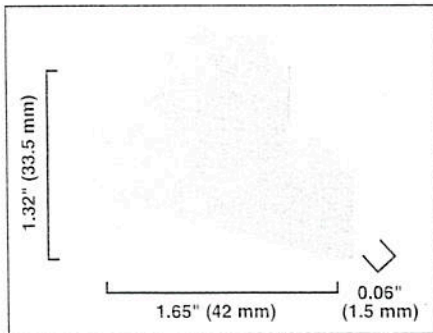


Cat. No.	A	B	C
1492-EB16	2.17" (55 mm)	2.15" (54.5 mm)	0.08" (2 mm)
1492-EB35	2.36" (60 mm)	2.80" (71 mm)	0.08" (2 mm)
1492-EBD4N	3.50" (89 mm)	1.97" (50 mm)	0.08" (2 mm)

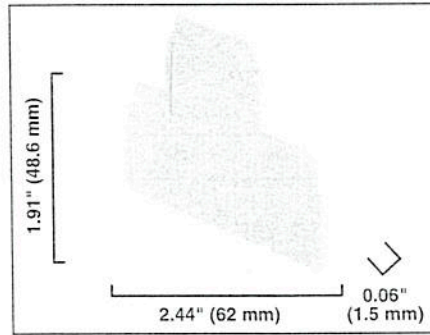
1492-EBKD6



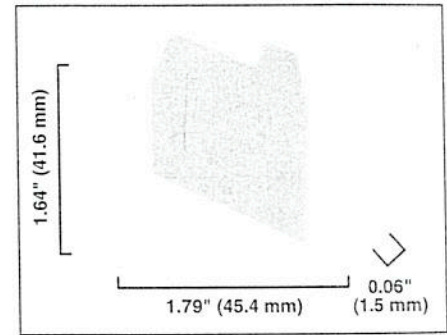
1492-EBMD1



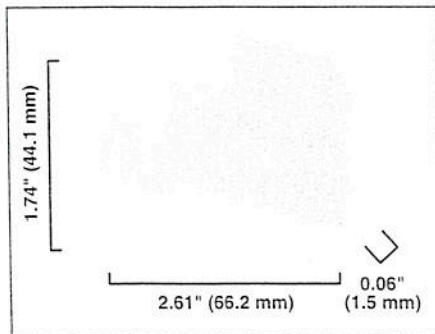
1492-EBD3



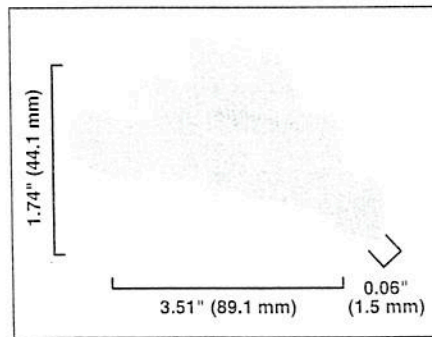
1492-EB3TW



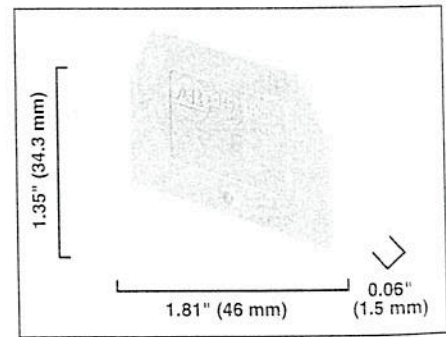
1492-EBTS3



1492-EBTF3



1492-EBKD3



Note: Height dimension of products that mount on rail is from top of rail to top of end barrier.

12