

# FPM-7211W

## 21.5" Full HD Industrial Monitor with PCT Touch, Direct-VGA and DVI Ports

**NEW**



### Features

- 21.5" Full HD TFT LED LCD wide screen display
- 16:9 wide screen display, viewing area increases by 40%
- Supports 10 points multi-touch via USB interface in Windows 7/8
- Slim design for Panel mount / Wall mount easy installation
- Various mounting options: panel, wall, desktop and VESA arm mounting
- Projected Capacitive Touchscreen with reliable glass surface
- Robust design with SECC chassis and Magnesium alloy front panel with IP66 compliance
- OSD control pad on rear cover
- Lockable I/O connectors

### Introduction

With its brand new design, the FPM-7211W provides a wide screen display with industrial grade design concept. By truly flat touch screen, the front bezel meets IP66 test criteria. FPM-7211W projected capacitive touch supports up to 10-points touch application. Its easy installation design helps you with one person for panel mounting, FPM-7211W monitor with slim enclosure is ideally suited to being either panel or wall mounted.

### Specifications

#### General

- **OSD Controls** OSD control on rear cover
- **Certification** BSMI, CCC, CE, FCC Class A, UL
- **Dimensions (W x H x D)** 558.4 x 349.8 x 47.7 mm (21.98" x 13.77" x 1.88")
- **Enclosure** Front panel: Die-cast Magnesium alloy  
Rear cover: SECC
- **Mounting** Panel, wall, desktop, VESA (MIS,100,C)
- **Power Input** Phoenix Jack: 24 V<sub>DC</sub> input
- **Power Consumption** 25 W + 20%
- **Video Port** VGA & DVI-D port
- **Weight (Net)** 8kg (17.6lbs)

#### LCD Display

- **Display Type** Full HD TFT LED LCD
- **Display Size** 21.5"
- **Max. Resolution** 1920 x 1080
- **Max. Color** 16.7 M
- **Viewing Angle (H/V°)** 178/178
- **Luminance (cd/m<sup>2</sup>)** 300
- **Backlight Life (hrs)** 50,000
- **Contrast Ratio** 5000:1

#### Touchscreen

- **Type** Projected Capacitive touch
- **Interface** RS-232 and USB
- **Light Transmission** Above 75%
- **OS Support** Windows XP, Vista, 7, 8, 10, XPe and Linux
- **Multi Touch** 10 points, USB interface in Win 7/8.
- **Hardness** >6H

#### Environment

- **Operation Temperature** 0 ~ 55°C (32 ~ 131°F)
- **Storage Temperature** -20 ~ 60°C (-4 ~ 140°F)
- **Humidity (Storage)** 10 ~ 90% non-condensing
- **Waterproof** Front panel is IP66 compliant
- **Vibration** 5 ~ 500 Hz, 1 Grms (Operating, Random)

### Ordering Information

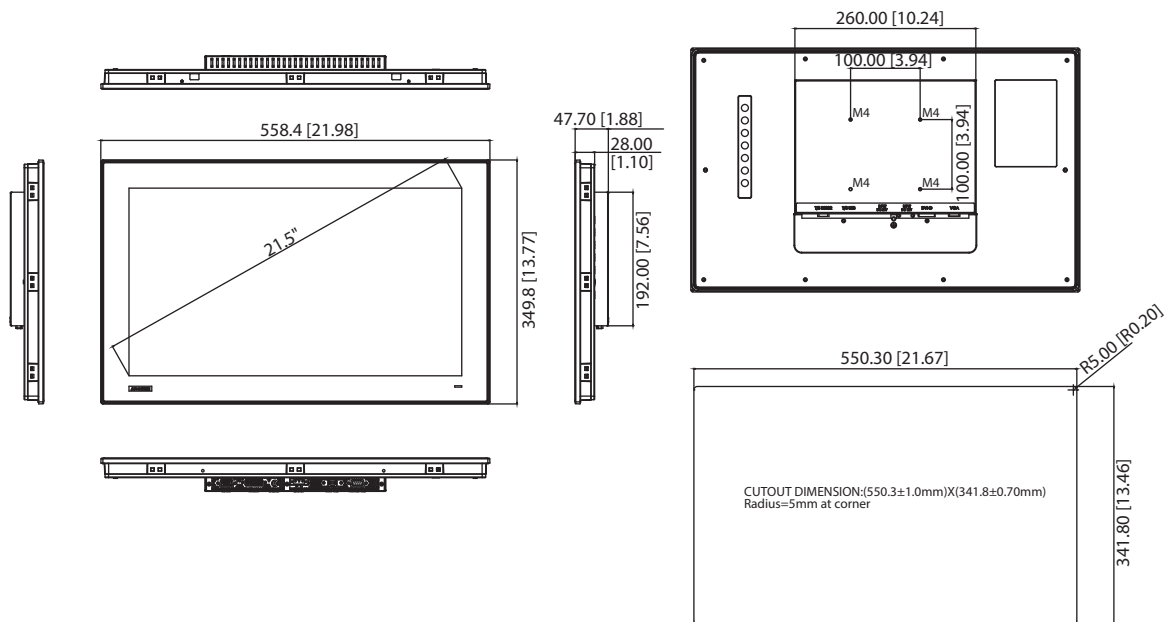
- **FPM-7211W-P3AE** 21.5" Full HD Ind Monitor w/PCT TS (RS-232, USB)

### Optional Accessories

- **1702002600** Power Cable US Plug 1.8 M
- **1702002605** Power Cable EU Plug 1.8 M
- **1702031801** Power Cable UK Plug 1.8 M
- **1700000596** Power Cable China/Australia Plug 1.8 M
- **FPM-1000T-SMKE** Desktop/Wall Mounting kit for FPM series
- **96PSA-A60W24T2** Adapter 100-240V 60W 24V 2.5A

## Dimensions

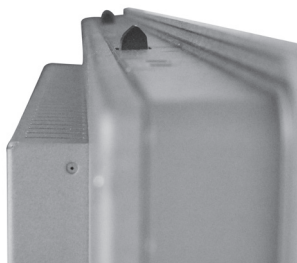
Unit: mm [inch]



**Panel Cut-out Dimensions: 550.30 x 341.8 mm (21.67" x 13.46")**

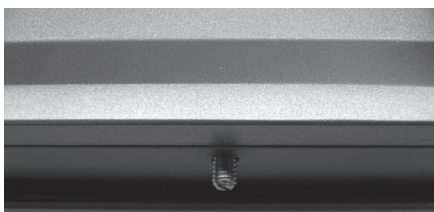
## Easy Installation

### Snap hook in rear cover



Screw to set up the snap hook out of upper side

### Stopper Screw in rear cover



Screw for the stopper screw out of bottom side

## Rear View

