

Catalog Number
Notes
Type

## FEATURES & SPECIFICATIONS

**INTENDED USE** — The industry's next generation in linear direct fluorescent products. This new compact, low-profile design offers our customers unique product features which improve the overall installation process and appearance while reducing labor cost, making it the most versatile solution for commercial, retail, manufacturing, warehouse, and cove and display applications.

**CONSTRUCTION** — Compact designed channel and cover are formed from code-gauge cold-rolled steel. Locking lamp holder tracks bolsters strength of the overall strip construction while creating improved lamp stability. Design includes T5 socket, features rotating collar and enclosed contacts. Improved easy "snap n' lock" end plates allow for quick attachment. Patented-pending "three-point" row connector locks channel together for straighter and faster rows mounting; included as standard.

Designed to accommodate a wide variety of T5 and T5HO lamp lengths. Channel offers the gripper back feature which strengthens the overall construction and allows for the use of the Z spring hanger (see back). Patent-pending fastener-less channel cover offers a secure fit design allowing for quick attachment and easy access without pinching wires.

Finish: High-gloss, baked white enamel finish (white standard). Five-stage iron-phosphate pretreatment ensures superior paint adhesion and rust resistance. Other channel paint finish options: black (MB), smoke gray (SKGY) and galvanized (GALV).

**OPTICS** — Reflector options include solid or apertured designs in both symmetric and asymmetric configurations. Consult factory for special-apertured versions.

**ELECTRICAL** — Thermally protected, resetting, Class P, HPF, non-PCB, UL listed. Suitable for damp locations. AWN, TFN or THHN wire used throughout, rated for required temperatures.

**INSTALLATION** — Patented-pending "three-point" row connector locks channels together for straighter and faster rows mounting; included as standard. Ideal for surface-mount or suspended.

**LISTINGS** — UL Listed, CUL Listed or CSA Certified to Canadian Standards. Listed for 25° C ambient temperature.

**WARRANTY** — Guaranteed for one year against mechanical defects in manufacture.

Note: Specifications subject to change without notice.



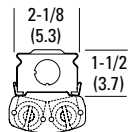
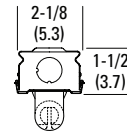
### Low-Profile T5 Striplight



Linear Lamps  
1 or 2 Lamps

#### Specifications

Length:	22-3/8 (56.8), 34-1/8 (86.7), 46 (116.8) or 92 (233.7)
Width:	2-1/8 (5.4)
Depth:	1-1/2 (3.8)
Weight:	7.1 lbs (3.2 kg)



All dimensions are inches (centimeters) unless otherwise noted.

# Z T5 Compact Striplight

## ORDERING INFORMATION

For shortest lead times, configure products using **standard options (shown in bold)**.

Example: Z5SMR 46 A8

Series	Number of lamps	Lamp type	Configuration	Paint finish	Reflector type	Voltage
<b>Z</b> Compact T5 For tandem double-length unit, add prefix T. <sup>1</sup> Example: TZ	<b>1</b>	14T5 14W T5 (22")	<b>(blank)</b> No reflector	<b>(blank)</b> White	<b>(blank)</b> Solid	<b>MVOLT<sup>2</sup></b>
	2 Not included	21T5 21W T5 (34")	Z5ASR46 46" asymmetric reflector	MB Matte black		120
		24T5HO 24W T5 HO (22")	Z5SMR46 46" symmetric reflector	GALV Galvanized		277
		<b>28T5</b> 28W T5 (46")	Other lengths available. See Accessories	SKGY Smoke gray		347 <sup>1</sup>
		39T5HO 39W T5 HO (34")				Others available
	<b>54T5HO</b> 54W T5 HO (46")					

Options	
<b>GEB10PS</b> Electronic ballast, ≤10% THD, program start	PLR_ Plug-in wiring, specify 1, 2 or 3 branch circuits and hot wires (A=black, B=red, C=blue, AB or AC)
OS10PS OSRAM® electronic ballast, ≤10% THD, program start	EL55 Emergency battery pack (nominal 390-700 lumens); consult factory for additional battery packs <sup>3,5</sup>
SS 0.95 ballast factor SIMPLY5™ system <sup>4</sup>	EL65 Emergency battery pack (nominal 725-1325 lumens) <sup>3,5</sup>
SS115 1.15 ballast factor SIMPLY5™ system <sup>4</sup>	MSI Aisle motion sensor
GLR Internal fast-blow fuse <sup>3</sup>	MSI360 360° motion sensor
GMF Internal slow-blow fuse <sup>3</sup>	MSE360LBK 360° motion sensor
TILW Tandem in-line wiring	MSE360LBZ 360° motion sensor; for mounting within row or at end of row
CSA CSA Certified <sup>8</sup>	

Accessories: Order as separate catalog number.		
SQ_ Swivel-stem hanger (specify length in 2" increments)	WGZ5ASR46 46" wireguard, white, for asymmetric reflector	
ZSPRG Tong and T-grid hanger	HC36 Hanger chain, 36"	
Z5SMR46 Symmetric reflector, 46" white	ZACVH Aircraft cable with hook	
Z5ASR46 Asymmetric reflector, 46" white	ZAC72 Aircraft cable, 72"	
Z5SMR34 Symmetric reflector, 34" white	ZACF72 Aircraft cable with feed, 72"	
Z5ASR34 Asymmetric reflector, 34" white	ZAC120 Aircraft cable, 120"	
Z5SMR22 Symmetric reflector, 22" white	ZACF120 Aircraft cable with feed, 120"	
Z5ASR22 Asymmetric reflector, 22" white	ZAC144 Aircraft cable, 144"	
WGZ46 46" wireguard, white	ZACF144 Aircraft cable with feed, 144"	
WGZ5SMR46 46" wireguard, white, for symmetric reflector		

### Notes

- 1 Only available with 28W and 54W.
- 2 MVOLT (120-277V), 50-60HZ
- 3 Specify voltage.
- 4 SIMPLY5 system includes a 13' S5SSC RELOC® wiring system. Specify voltage unless hardwire (HW) or PWS is ordered.
- 5 Available with 4' and 8' lengths only.
- 6 120-277V only for power feed.
- 7 Standard wire size for power feed is 18 gauge. For 12 gauge add 12AWG to the end of catalog number. Consult factory for length of runs and required wire size.
- 8 347V only.

# Z T5 Compact Strilight

## MOUNTING DATA

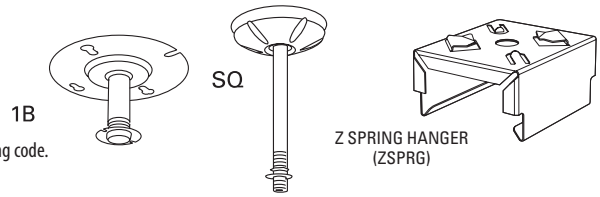
For unit or row installation, surface or stem mounting.

Unit installation — Minimum of two hangers required.

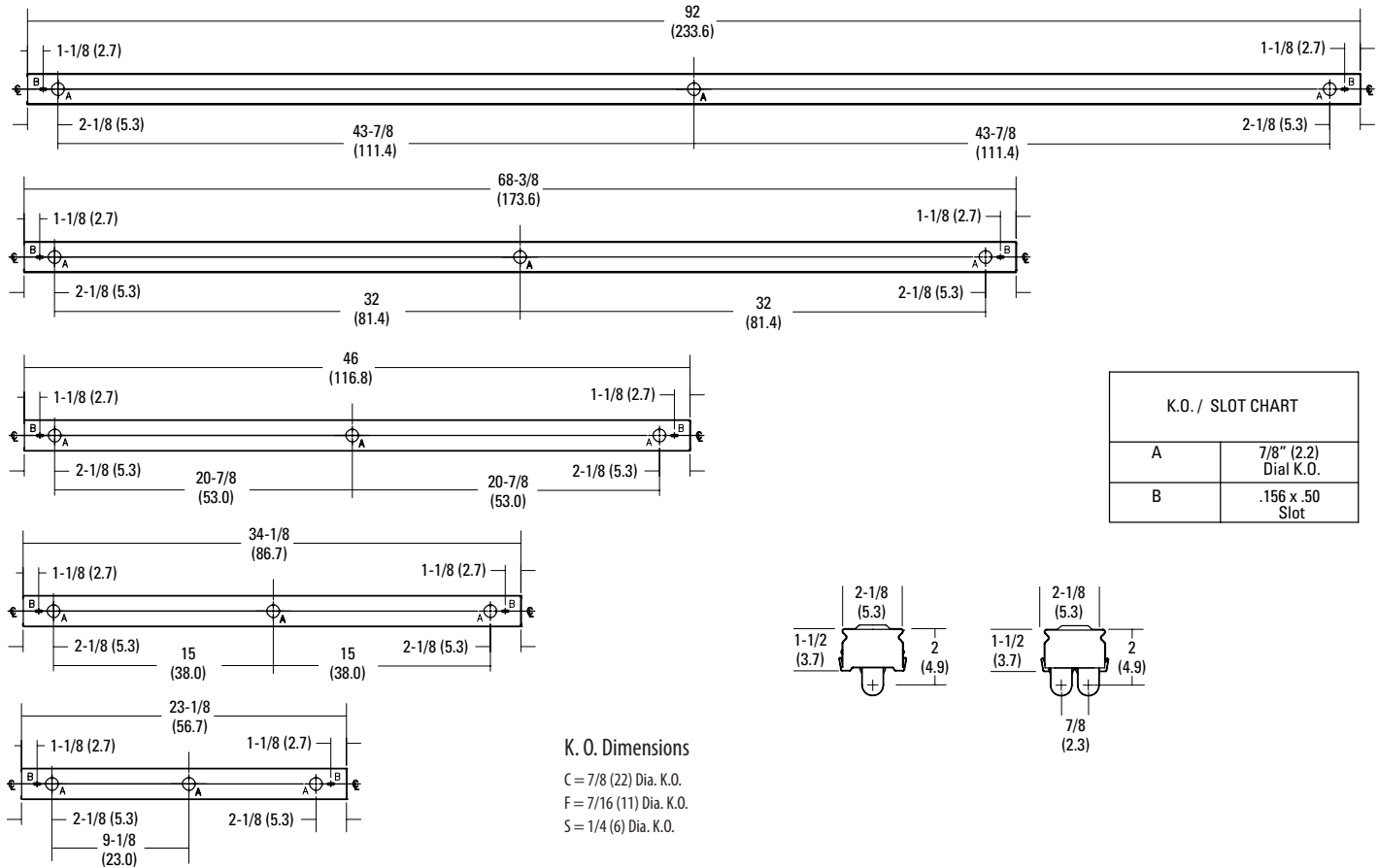
Row installation — One hanger per channel plus one per row required.

Hanging devices illustrated.

Review local codes when installing any product, as the minimum of 1 hanger per fixture may not satisfy your local building code.



## DIMENSIONS



### K. O. Dimensions

C = 7/8 (22) Dia. K.O.

F = 7/16 (11) Dia. K.O.

S = 1/4 (6) Dia. K.O.

## PHOTOMETRICS

Calculated using the zonal cavity method in accordance with IESNA LM41 procedure. Floor reflectances are 20%. Lamp configurations shown are typical. All data based on 25°C. Full photometric data on these and other configurations available upon request.

TEST NO: LTL17094

LUMINAIRE CATALOG NO.: Z 1 28T5 MVOLT GEB10PS

LUMENS PER LAMP: 2730

FCR	Coefficients of Utilization									
	pf	20%			50%			100%		
		pc	80%	10%	70%	10%	50%	10%	100%	10%
0	115	115	115	110	110	110	102	102	102	
1	94	89	83	90	85	81	83	79	75	
2	80	72	65	77	69	63	70	64	59	
3	69	60	52	66	58	51	61	54	48	
4	60	51	43	58	49	42	53	46	40	
5	54	44	37	51	42	36	47	40	34	
6	48	38	31	46	37	31	42	35	29	
7	43	34	27	41	33	27	38	31	25	
8	39	30	24	38	29	24	35	28	22	
9	36	27	21	34	26	21	32	25	20	
10	33	25	19	32	24	19	30	23	18	

Zonal Lumen Summary			
Zone	Lumens	% Lamp	% Fixture
0° - 30°	428.3	15.7	15.7
0° - 40°	723.9	26.5	26.6
0° - 60°	1398.5	51.2	51.4
0° - 90°	2278.6	83.5	83.7
90° - 180°	443.9	16.3	16.3
0° - 180°	2722.4	99.7	100.0

TEST NO: LTL17092

LUMINAIRE CATALOG NO.: Z 1 54T5HO MVOLT GEB10PS

LUMENS PER LAMP: 4450

FCR	Coefficients of Utilization									
	pf	20%			50%			100%		
		pc	80%	10%	70%	10%	50%	10%	100%	10%
0	109	109	109	106	106	106	99	99	99	
1	92	87	83	89	85	81	84	80	77	
2	79	72	66	76	70	64	72	66	61	
3	68	60	53	66	59	52	62	56	50	
4	60	51	44	58	50	44	55	48	42	
5	53	44	38	52	43	37	49	41	36	
6	48	39	32	46	38	32	44	36	31	
7	43	34	28	42	34	28	40	32	27	
8	39	31	25	38	30	25	36	29	24	
9	36	28	22	35	27	22	33	26	21	
10	33	25	20	32	25	20	30	24	19	

Zonal Lumen Summary			
Zone	Lumens	% Lamp	% Fixture
0° - 30°	809.8	18.2	19.5
0° - 40°	1366.0	30.7	32.9
0° - 60°	2625.8	59.0	63.2
0° - 90°	3806.5	85.5	91.6
90° - 180°	347.8	7.8	8.4
0° - 180°	4154.3	93.4	100.0

TEST NO: LTL17070

LUMINAIRE CATALOG NO.: Z 2 54T5HO MVOLT GEB10PS

LUMENS PER LAMP: 4450

FCR	Coefficients of Utilization									
	pf	20%			50%			100%		
		pc	80%	10%	70%	10%	50%	10%	100%	10%
0	119	119	119	115	115	115	106	106	106	
1	99	93	88	95	90	85	88	84	80	
2	84	76	69	81	73	67	75	68	63	
3	73	63	56	70	61	54	64	57	51	
4	64	54	46	61	52	45	56	49	42	
5	56	46	39	54	45	38	50	42	36	
6	50	40	33	48	39	32	45	37	31	
7	45	36	29	44	35	28	40	33	27	
8	41	32	25	39	31	25	37	29	24	
9	37	28	22	36	28	22	34	26	21	
10	34	26	20	33	25	20	31	24	19	

Zonal Lumen Summary			
Zone	Lumens	% Lamp	% Fixture
0° - 30°	1451.4	16.3	15.8
0° - 40°	2517.9	28.3	27.4
0° - 60°	5023.5	56.4	54.7
0° - 90°	7793.5	87.6	84.8
90° - 180°	1392.3	15.6	15.2
0° - 180°	9185.9	103.2	100.0