

## FEATURES & SPECIFICATIONS

**INTENDED USE** — Sharing many popular Z Series elements, this solid-state strip offers long maintenance-free life, several color temperatures, lumen outputs and lengths. Ideal for new construction and retrofit applications in T5 and T8 lengths. Ideal for uplight and downlight in commercial, retail, manufacturing, warehouse, cove and display applications.

**CONSTRUCTION** — Compact-design channel and cover are formed from code-gauge, cold-rolled steel. Improved easy "snap 'n' lock" end plates allow for quick attachment.

Finish: Paint options include high-gloss, baked white enamel (WH), galvanized (GALV), matte black (MB) and smoke gray (SKGY). Five-stage iron phosphate pre-treatment ensures superior paint adhesion and rust resistance.

**OPTICS** — Replaceable medium diffuse lens (up to 10%) offer ingress protection from debris.

**ELECTRICAL** — Utilizes high-output LEDs integrated on a two-layer circuit board, ensuring cool-running operation. Internal pluggable wiring harness prevents wiring errors. Electronic LED driver is rated for 75 input watts maximum (see Operational Data on page two for actual wattage consumption), **multi-volt input and 0-10V dimming standard**. This fixture is designed to withstand a maximum line surge of 1.5kV at 0.75kA combination wave for indoor locations, for applications requiring higher level of protection additional surge protection must be provided.

LEDs provide 83 CRI at 3000 K, 3500 K, 4000 K or 5000 K.

Lumen output ranges from 2100 to 6000 lumens. Beam angle is 110 FWHM (full width at half maximum). Lumen output up to 1,300 lumens per foot. In 86°F (30°C) ambient environments, L70 is predicted to be 100,000+ hours, L85 at 44,000 hours. Luminaire should be installed in applications where ambient temperatures do not exceed 86°F (30°C). Ambient temperatures that exceed 86°F (30°C) will result in reduced life and will void warranty.

**INSTALLATION** — Tool-less channel cover for easy installation.

Fixture may be surface, pendant or stem mounted. Three-point aligner locks in place for easy continuous row mounting.

**LISTINGS** — UL Listed. CSA certified to US and Canadian safety standards. For use in damp locations between -4°F (-20°C) and 86°F (30°C).

**WARRANTY** — 5-year limited warranty. Complete warranty terms located at: [www.acuitybrands.com/CustomerResources/Terms\\_and\\_conditions.aspx](http://www.acuitybrands.com/CustomerResources/Terms_and_conditions.aspx)

**Note:** Actual performance may differ as a result of end-user environment and application. All values are design or typical values, measured under laboratory conditions at 25 °C. Specifications subject to change without notice.

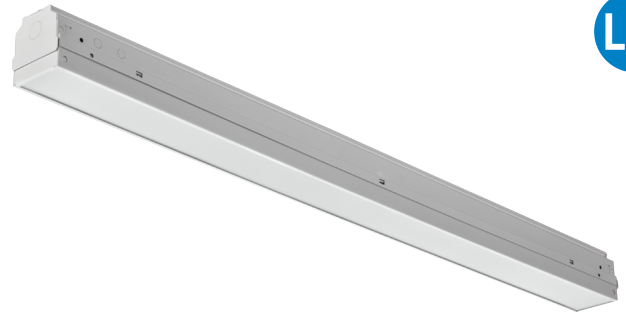
Catalog Number
Notes
Type



Lensed LED Striplight

# ZL2N

24" and 48" Lengths



### ORDERING INFORMATION

Lead times will vary depending on options selected. Consult with your sales representative.

**Example:** ZL2N L48 3000LM MDD MVOLT 40K 80CRI WH

ZL2N		Length		Nominal lumens <sup>1</sup>		Diffuser		Voltage			
Series											
ZL2N	Lensed LED striplight	L24	24"	2000LM	2,000 lumens	MDD	Medium diffuse	MVOLT	120-277V	277	277V
		L46	46"	2000LM	2,000 lumens	ZSD	Zebra striped lens	120	120V	347	347 <sup>2</sup>
		L48	48"	3000LM	3,000 lumens			208	208V	480	480 <sup>2</sup>
				5000LM	5,000 lumens			240	240V		

Color temperature		Color rendering index		Options				Paint finish	
40K	4000 K	80CRI	80 CRI	PLR	Plug-in wiring <sup>3</sup>	Cord sets: <sup>8</sup>		WH	White
30K	3000 K	90CRI	90 CRI	PLR1LVG	Plug-in wiring low voltage <sup>5</sup>	CS1W	Straight plug, 120V	GALV	Galvanized
35K	3500 K			BSL722	Emergency battery pack <sup>2,6,7</sup>	CS3W	Twist-lock, 120V	MB	Matte black
50K	5000 K			OUTEND	Cord set to exit endplate of fixture	CS7W	Straight plug, 277V	SKGY	Smoke gray
						CS11W	Twist-lock, 277V		
						CS25W	Twist-lock, 347V		
						CS97W	Twist-lock, 480V		
						CS93W	600V SE00W white cord, no plug (no voltage required)		

Accessories: Order as separate catalog number.	
ZACVH	Aircraft cable with hook
HC36	Hanger chain, 36"
ZSPRG	For 15/16" T-grid only
LSXR	Sensor Switch® LSXR occupancy sensor <sup>3</sup>

Replacement Lens	
LZL2 XX MDIF	Medium-diffuse lens. Specify length 24 or 48 (example: LZL2 24 MDIF) <sup>9</sup>

### Notes

- See Operational Data on page 2 for actual lumens.
- Not available with L24, 24" fixture. 347V and 480V utilize a step-down transformer.
- See ordering information on page 3.
- Not available with cordsets.
- Use ZSPRG for surface mounting when order this option.
- Specify voltage, 120 or 277.
- Output is 1400 lumens.
- Cordsets exit back of fixture unless OUTEND option is specified.
- XX denotes length.

# ZL2N LED Striplight

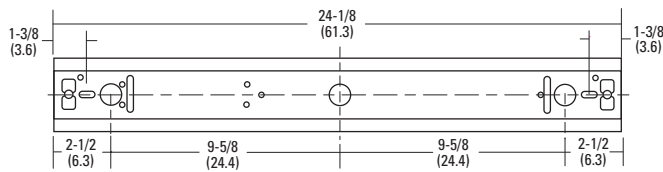
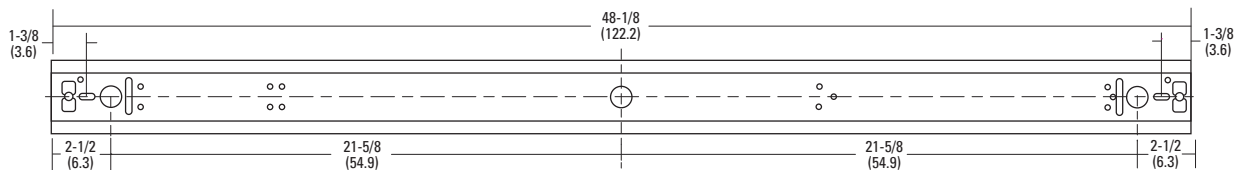
OPERATIONAL DATA							
Nominal lumen package	Length (inches)	Delivered lumens 3000 K CCT @ 77°F (25°C) ambient temperature	Delivered lumens 3500 K CCT @ 77°F (25°C) ambient temperature	Delivered lumens 4000 K CCT @ 77°F (25°C) ambient temperature	Delivered lumens 5000 K CCT @ 77°F (25°C) ambient temperature	Wattage @ 120V/277V	Comparable light source
2,000LM	24	2,009	2,092	2,249	2,457	34W/32W	1-lamp 32W T8, 1-lamp 54W T5HO, 50W HID
2,000LM	46 or 48	1,830	1,905	2,048	2,237	32W/31W	1-lamp 32W T8, 1-lamp 54W T5HO, 50W HID
3,000LM	46 or 48	2,835	2,952	3,173	3,467	42W/41W	2-lamp 32W T8, 1-lamp 54W T5HO, 70W HID
5,000LM	46 or 48	4,274	4,450	4,784	5,226	72W/70W	2-lamp 32W T8, 1-lamp 54W T5HO, 70W HID

PROJECTED LUMEN MAINTENANCE								
Operating hours	0	10,000	20,000	30,000	40,000	50,000	60,000	100,000
Lumen maintenance factor	1	0.9466	0.9173	0.8888	0.8613	0.8346	0.8088	0.7131
Based on incomplete LM-80 data. Update expected Q1 2014.								

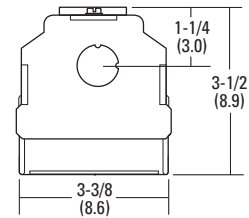
## DIMENSIONS

All dimensions are shown in inches (centimeters) unless otherwise noted.  
Specifications subject to change without notice.

PALLET DIMENSIONS			
Length	Approximate weight	Fixtures per pallet	Approximate pallet dimensions (L x W x H)
L24	6 lbs	408	46" x 46" x 32-11/18"
L46	8 lbs	178	46" x 46" x 31-1/3"
L48	8 lbs	178	46" x 46" x 31-1/3"
L92	16 lbs	176	98-1/2" x 46" x 31-1/16"
L96	16 lbs	176	98-1/2" x 46" x 31-1/16"



KO SIZE = 7/8 (22) Dia  
SLOT SIZE = 1/2 (12.7) X 1/8 (4.0)



## PHOTOMETRICS

Please see [www.lithonia.com](http://www.lithonia.com).

## PRODUCT INFORMATION

Advanced plug-in system with three-circuit capability. Available on industrial and strip products and a variety of architectural products mounted in continuous rows. 1, 2, 3 and 4-lamp fixtures. PLR22 (2-circuit) and PLR33 (3-circuit) crossover harness switches hot circuit serving next fixture in row. Reduces fixture types on job for alternating circuit applications (see example below.)

Easy one-step installation, saves up to 35% on labor costs. Expanded switching flexibility helps save energy.

Rows can be 50% longer with two-circuit systems. Polarized, lock-together nylon connectors prevent miswiring in the field. #12 THHN conductor, rated 600V, 90°C. White neutral wire included. Grounding accomplished by fixture in-row connectors.

CSA certified systems available with up to 2 circuits. G ground required.

Note: Specifications subject to change without notice.



# PLR

Advanced 3-Circuit Plug-In

**ORDERING INFORMATION** Lead times will vary depending on options selected. Consult with your sales representative.

Series	Number of hot wires	Branch circuits	Dimming	Ground
PLR	(blank) Not required for 22 or 33	<u>Circuits to which ballast is connected</u>	LV Low-voltage dimming	(blank) No ground in PLR
PLR22	1 Black	(blank) Not required for 22 or 33		G Ground. Maximum 2 circuits
PLR33	2 Black and red	A Black wire		
	3 Black, red and blue			

### Typical Applications

- Multiple-circuit and single-circuit for longer continuous rows
- Multiple-circuit with alternating fixtures on separate circuits, 2-circuit (PLR 22) and 3-circuit (PLR 33)
- Multiple circuit with night-lights located along row as desired

TYPICAL APPLICATIONS										
PLR 3 C	PLR 3 C	PLR 3 C	PLR 3 C	PLR 2 B	PLR 2 B	PLR 2 B	PLR 2 B	PLR 1	PLR 1	PLR 1
(All PLR22)										
Circuit A	Circuit B	Circuit A	Circuit B	Circuit A	Circuit B	Circuit A	Circuit B	Circuit A	Circuit B	Circuit A
(All PLR33)										
Circuit A	Circuit B	Circuit C	Circuit A	Circuit B	Circuit C	Circuit A	Circuit B	Circuit C	Circuit A	Circuit B
PLR 3 A	PLR 3 A	PLR 3 A	PLR 3 C	PLR 3 B	PLR 3 B	PLR 3 B	PLR 3 C	PLR 3 A	PLR 3 A	PLR 3 A

## PRODUCT INFORMATION

A standard occupancy time delay is also present to ensure lights turn off (once minimum on timer has also elapsed) if no occupancy is detected.

This timer is factory set at 10 minutes to promote energy savings, but is adjustable between 30 seconds and 30 minutes. These adjustments may be done through the unit's push-button.

### FEATURES

- Four interchangeable lenses - high mount 360°, low mount 360°, high mount aisleway, and small motion 360°.
- Integrated mounting bracket drops lens down 3" from chase nipple - no bracket accessory required.
- 100% digital PIR detection - provides excellent RF immunity

Note: Specifications subject to change without notice.



# LSXR

Single Relay

sensorswitch

**ORDERING INFORMATION** Lead times will vary depending on options selected. Consult with your sales representative.

**Example: LSXR 10 ADC HVOLT 30M**

LSXR		Lens option				Dimming/photocell	
Series	Passive Infrared Indoor Occupancy Sensor	(blank)	No lens	610	High and low mount 360°	(blank)	None
		6	High mount, 360°	650	High mount 360° and aisleway	HL	High/low occupancy operation
		10	Low mount, 360°	3PK	High and low mount 360° and aisleway	P	Switching photocell (on/off)
		50	High mount aisleway	4PK	All lenses	ADC	Dimming and switching photocell
		9	Small motion, 360°			ANL	Dimming and switching photocell with high/low occupancy operation

Voltage	Max dim level	Min dim level	Lead length	Temp humidity	Default time delay
(blank) 120-277 VAC (MVOLT)	(blank) 10 VDC	(blank) Minimum dimming level of ballast	(blank) 14"	(blank) None	(blank) 10 minutes (with minimum 15 minutes on time)
HVOLT 347-480 VAC	9H 9 VDC	1V 1 VDC	42L 42"	LT Low temperature	5M 5 minutes (LED only)
	8H 8 VDC	2V 2 VDC			15M 15 minutes
	7H 7 VDC	3V 3 VDC			20M 20 minutes
		4V 4 VDC			30M 30 minutes
		5V 5 VDC			
		6V 6 VDC			

For additional information see [www.lithonia.com](http://www.lithonia.com)

## OPTIONS AND ACCESSORIES

The Z Series fixture offers numerous options for almost every electrical and optical component, including a long list of field-installable accessories.

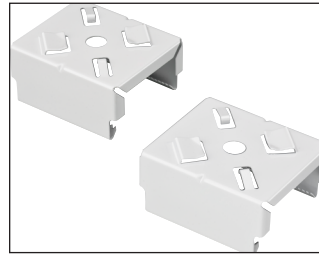


### HANGER CHAIN

36" chain with Y hanger.

Order as:

HC36



### Z SPRING HANGER

Snap 'n' lock design requires no fasteners and can be used on T-grid ceiling or universal mounting systems.

Order as:

ZSPRG



### ZACVH HANGER

10' Aircraft cable with Y hanger.

Order as:

ZACVH