

Miscellaneous Options

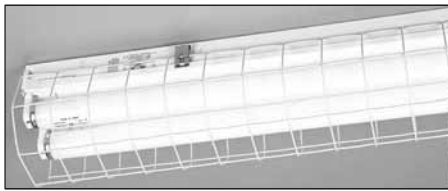
Wireguards (Order separately)

14-gauge baked white enamel, 4' long. Order two for 8' fixtures.

For use with: Catalog number:

UN (with UNASR48 reflector)	<b>WGUNASR</b>
2UN (9" wide)	<b>WG2UN</b>
UNS/UND	<b>WGCUN</b>
C (with CASR48 reflector)	<b>WGCASR</b>
<b>C (with CSMR48 reflector)</b>	<b>WGCSMR</b>
S (with SASR48 reflector)	<b>WGSASR</b>
S (with SSMR48 reflector)	<b>WGSMSR</b>
S (without reflector)	<b>WGS</b>
AF, PV	<b>WGAFPV</b>
EJ (12" wide)	<b>WGJ</b>
2EJ (16" wide)	<b>WG2EJ</b>
L	<b>WGL</b>

For optional 11-gauge construction, add suffix 11 to catalog number. Example: **WGSASR11**



Swivel-Stem Hangers (Order separately)

**SQ** Complete assembly with stem up to 48" (consult factory for longer lengths). Specify stem length in 2" increments and adjust as needed. 5/8" O.D. stem. Swivels 30° from vertical in any direction.

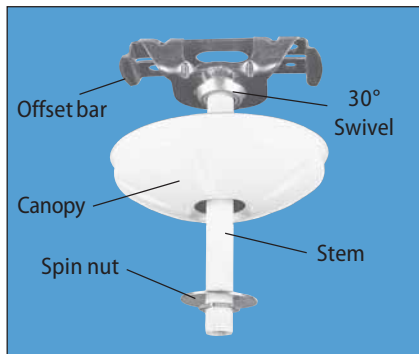
Example: **SQ24**

**HDSQ** Complete heavy-duty assembly. Specify length in 2" increments and adjust as needed, swivels 45° from vertical. Example: **HDSQ36**

**ST** Pipe stem only. Specify length up to 60". Example: **ST18**

**Q** Canopy, offset bar and parts only.

**ST\_TBE** Pipe stem only, threaded both ends. Coupler included. Specify length from 6" to 60". Example: **ST48TBE**.



Ceiling Spacer (Order separately)

**1B** Hanger spaces fixtures 1½" to 2½" from ceiling. For unit mounting, order two per fixture; for row mounting, order one per fixture plus one per row. Standard pack: 2, 20, 100.



Chain Hangers (Order separately)

**HC** Wire hook and 36" chain set, option or accessory. One pair per fixture furnished. Not compatible with fixtures over 5" wide.

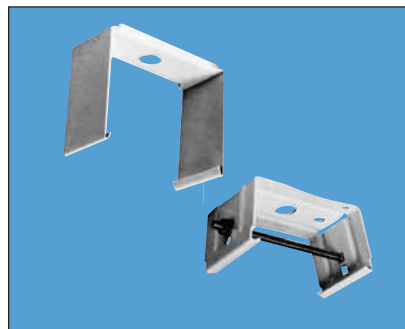
Example: **UN 2 32 120 HC** or **HC36** (accessory)



Tong Hangers (Order separately)

Order by channel width. For unit or row mounting, order two per fixture. All tong (slide clamp) hangers are suitable for use with 3/8" or smaller mounting rods. Rods smaller than 3/8" diameter require use of appropriate washers (supplied by others). Standard pack: 2, 100.

- THUN** Hanger for 5" channel
- TH2UN** Hanger for 9" channel
- THC** Hanger for 4¾" channel
- THK** Hanger for 4¾" channel
- THSR** Hanger for 5" channel (uses carriage bolt mounting rod)



Double-Stem Hangers (Order separately)

**DSH24** Complete assembly with double canopy and two 24" stems on 10" centers. For most 4' fixtures. Other stem lengths available.

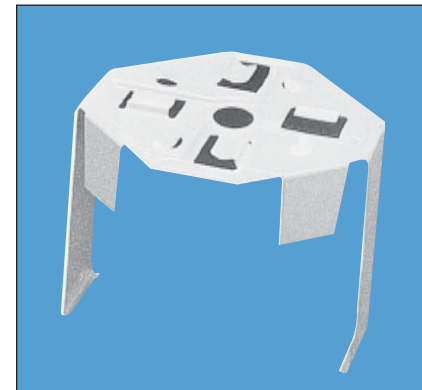


Hooker® Hangers (Order separately)

Patented, no-tools system for easy mounting to grid tee ceilings. For use with inverted tee exposed grid ceilings, nominal 1" wide.

- Hooks anywhere on grid – main tee, cross tee or intersection.
- Die-formed from heavy-gauge steel.
- Fixture can be mounted parallel or perpendicular to grid, flush to ceiling or 1½" below tee.

Two required per fixture. Standard pack: 10, 48.



**lightquick<sup>®</sup> XD**  
Express delivery products.

See page 11 for details about LightQuick XD.

Description

- WGL**
- WGCUN**
- HC36**

Number	Type of mounting	For use with
<b>HRC</b>	Flush to ceiling	CB, L, C and ALC fixtures with 4¾" wide and 2¼" deep channels.
<b>HRC1</b>	Spaced 1½" from ceiling	
<b>HRUN</b>	Flush to ceiling	PV, AF fixtures with 5" channels
<b>HRUN1</b>	Spaced 1½" from ceiling	
<b>HRUNS1</b>	Spaced 1½" from ceiling	UN, S, EJS

HOOKER® Hanger, Pat. No. 3,589,660