

## FEATURES & SPECIFICATIONS

**INTENDED USE** — High performance parabolic luminaires for superior light control, visual comfort and light cutoff in open area applications.

**ATTRIBUTES** — Choice of diffuse or specular louvers utilize the latest developments in louver finishing for minimized louver iridescence; ideal for use with triphosphor lamps.

**CONSTRUCTION** — Black reveal provides floating louver appearance, conceals optional air supply slots.

Integral T-bar safety clips hold T-bar securely; no fasteners required to install.

Overlapping flange and modular ceiling trims factory-installed with standard swing-gate hangers or field convertible with optional trim and hangers. Heavy-gauge hinges, die-formed for maximum strength. Spring action latches.

Housing formed from cold-rolled steel. Louvers formed from anodized aluminum. No asbestos is used in this product.

**FINISH** — Five-stage iron-phosphate pretreatment ensures superior paint adhesion and rust resistance. Painted parts finished with high-gloss, baked white enamel.

**ELECTRICAL SYSTEM** — Thermally-protected, resetting, Class P HPF, non-PCB, UL listed, CSA certified ballast is standard. Electronic ballasts are sound rated A.

Fixture conforms to UL 1570 and is suitable for damp locations. AWM, TFN, or THHN wire used throughout, rated for required temperatures.

**LISTING** — UL listed (standard). CSA certified or NOM certified (see Options).

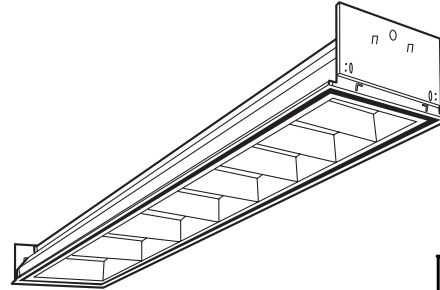
**WARRANTY** — Guaranteed for one year against mechanical defects in manufacture.

NOTE: Specifications subject to change without notice.

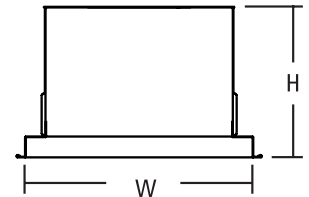
Catalog Number	
Notes	Type

### PARAMAX® Parabolic Troffer

# PM3 1'X4'



3" LOUVER



#### Specifications

Length: 48 (1218)
Width: 12 (305)
Depth: 7-1/4 (184)
Weight: 18 lbs (8.2 kg)

All dimensions are inches (millimeters). Specifications subject to change without notice.

## ORDERING INFORMATION

For shortest lead times, configure product using **standard options (shown in bold)**.

Example: PM3 G B 2 32 8LD MVOLT GEB10IS

PM3		32					Options	
Series	Number of lamps	Lamp type	Number of cells <sup>1</sup>	Finish	Voltage			
<b>PM3 Paramax 3" parabolic, 1' wide</b>	1 2 3 Not included.	<b>32 32 T8 (48")</b>	6 8 9 12 16	<b>LD Low iridescent anodized diffuse silver</b> <b>LS Low iridescent anodized specular silver</b>	120 277 347 <b>MVOLT<sup>2</sup></b> Others available.			
Trim type	Air function							
<b>G Grid</b> <b>F Overlapping flange</b> MT Modular fit-in	<b>A Air supply/return (slots in side trim)</b> H Heat removal (through lamp cavity) <b>D Combination A &amp; H</b> <b>B Static (no air function, matching appearance)</b>			<b>1/3 One 3-lamp ballast</b> <b>GEB10IS Electronic ballast, ≤10% THD, instant start</b> <b>GEB10RS Electronic ballast, ≤10% THD, rapid start</b> <b>EL Emergency battery pack (nominal 300 lumens)</b> <b>EL14 Emergency battery pack (nominal 1400 lumens)</b> <b>PWS1836 6' prewire, 3/8" dia., 18-gauge, 1 circuit</b> GLR Internal fast-blow fuse <sup>3</sup> GMF Internal slow-blow fuse <sup>3</sup> <b>LP735 Lamped; 700-series, 3500K</b> <b>LP835 Lamped; 800-series, 3500K</b> LP__ Lamped, specify lamp type and color ACS Air closure strips (A & D models only) APB Air-pattern control blades (A & D models only) PAF Painted after fabrication (white enamel) CRE Flanged trim for continuous row mounting (end) CRM Flanged trim for continuous row mounting (middle) <b>CSA CSA Certified</b> NOM NOM Certified JP Palletized and stretch-wrapped, G trim only				

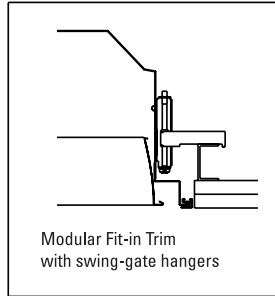
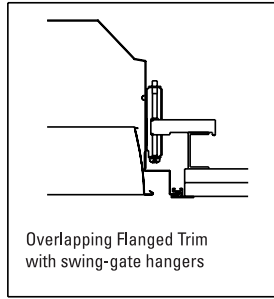
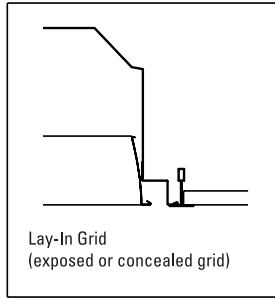
#### NOTES:

- 12-cell and 16-cell models feature two rows of cells.
- MVOLT standard for 120V and 277V applications, some options require voltage specified.
- Must specify voltage.

# PM3 1'x4' 3" Louver Family

## MOUNTING DATA

Continuous row mounting of flanged units requires CRE and CRM trim options (see Options).

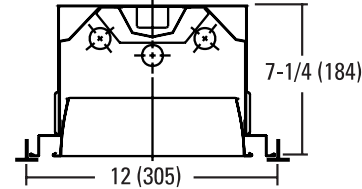
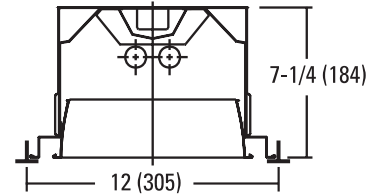
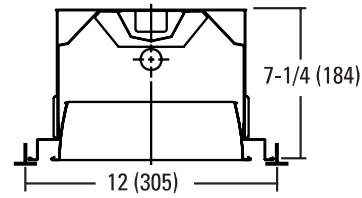


### NOTES:

- 1 Recommended rough-in dimensions for F trim fixtures 12"x48" (Tolerance is +1/4", -0"). Swing-gate range 1" to 3-1/4", span 11-1/2" to 14-5/16".

## DIMENSIONS

All dimensions are inches (millimeters). Specifications subject to change without notice.



## PHOTOMETRICS

Calculated using the zonal cavity method in accordance with IESNA LM41 procedure. Floor reflectances are 20%. Lamp configurations shown are typical. All data based on 25°C. Full photometric data on these and other configurations available upon request.

### PM3 2 32 6LD 120 GEB

Report: LTL12447

LUMENS PER LAMP:2850

Luminaire Efficiency:73.1%

#### Coefficients of Utilization

ROR	pf	20%									
		pc	80%			50%			30%		
			70%	50%	30%	50%	30%	10%	50%	30%	10%
0	87	87	87	81	81	81	78	78	78		
1	81	78	76	74	72	70	71	69	68		
2	75	70	65	66	63	60	63	61	58		
3	69	62	57	59	55	51	57	53	51		
4	63	56	50	53	48	45	51	47	44		
5	59	50	44	48	43	39	46	42	39		
6	54	45	39	43	38	34	42	38	34		
7	50	41	35	40	34	31	38	34	30		
8	47	38	32	36	31	28	35	31	27		
9	44	35	29	33	28	25	33	28	25		
10	41	32	26	31	26	23	30	26	23		

#### Zonal Lumen Summary

Zone	Lumens	% Lamp	% Fixture
0° - 30°	1371	24.1	32.9
0° - 40°	2295	40.3	55.1
0° - 60°	3779	66.3	90.8
0° - 90°	4164	73.1	100.0
90° - 180°	0	0.0	0.0
0° - 180°	4164	73.1	100.0

### PM3 2 32 8LD 120 GEB

Report: LTL12448

LUMENS PER LAMP:2850

Luminaire Efficiency:70.3%

#### Coefficients of Utilization

ROR	pf	20%									
		pc	80%			50%			30%		
			70%	50%	30%	50%	30%	10%	50%	30%	10%
0	84	84	84	78	78	78	75	75	75		
1	78	75	73	71	69	68	68	67	66		
2	72	67	63	64	61	58	62	59	57		
3	67	60	55	57	53	50	55	52	49		
4	62	54	49	52	47	44	50	46	43		
5	57	49	43	47	42	38	45	41	38		
6	53	44	39	42	38	34	41	37	34		
7	49	40	35	39	34	30	38	33	30		
8	46	37	31	35	31	27	35	30	27		
9	43	34	28	33	28	25	32	28	25		
10	40	31	26	30	26	22	30	25	22		

#### Zonal Lumen Summary

Zone	Lumens	% Lamp	% Fixture
0° - 30°	1366	24.0	34.1
0° - 40°	2287	40.1	57.1
0° - 60°	3713	65.1	92.7
0° - 90°	4005	70.3	100.0
90° - 180°	0	0.0	0.0
0° - 180°	4005	70.3	100.0

### PM3 2 32 9LD 120 GEB

Report: LTL12450

LUMENS PER LAMP:2850

Luminaire Efficiency:69.3%

#### Coefficients of Utilization

ROR	pf	20%									
		pc	80%			50%			30%		
			70%	50%	30%	50%	30%	10%	50%	30%	10%
0	83	83	83	77	77	77	74	74	74		
1	77	75	72	70	68	67	67	66	65		
2	71	67	63	63	60	58	61	58	56		
3	66	60	55	57	53	50	55	52	49		
4	61	54	48	51	47	43	50	46	43		
5	56	48	43	46	42	38	45	41	38		
6	52	44	38	42	37	34	41	37	33		
7	48	40	34	38	34	30	37	33	30		
8	45	37	31	35	30	27	34	30	27		
9	42	34	28	32	28	24	32	27	24		
10	40	31	26	30	25	22	29	25	22		

#### Zonal Lumen Summary

Zone	Lumens	% Lamp	% Fixture
0° - 30°	1357	23.8	34.3
0° - 40°	2274	39.9	57.5
0° - 60°	3682	64.6	93.1
0° - 90°	3953	69.3	100.0
90° - 180°	0	0.0	0.0
0° - 180°	3953	69.3	100.0



An AcuityBrands Company