

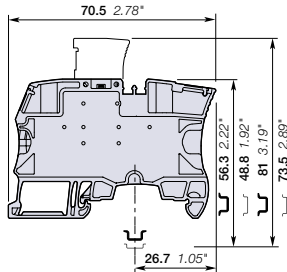
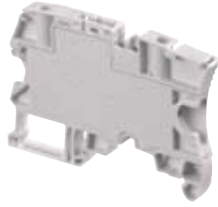


**4 mm<sup>2</sup>**  
**10 AWG**

# ZS4-SP-R1 Screw Clamp Terminal Block

Disconnect with Plug

6 mm 0.236 in spacing



## Features and Benefits

- Simplify the alternated distribution between feed-through and disconnect circuits thanks to the two aligned jumper channels,
- Save time with our screwless component holder plug.

## Main Technical Data

Connecting capacity		IEC	cULus - CSA
with 1 conductor per clamp	Rigid	0.2-4 mm <sup>2</sup>	24-10 AWG
	Flexible	0.22-4 mm <sup>2</sup>	24-10 AWG
	with ferrule	0.22-4 mm <sup>2</sup>	24-12 AWG
Gauge		A3-B3	
with 2 conductors per clamp	Rigid	0.2-1 mm <sup>2</sup>	24-18 AWG
	Flexible	0.22-1 mm <sup>2</sup>	24-18 AWG
	with twin ferrule	0.22-1.5 mm <sup>2</sup>	24-16 AWG
Rated cross section		4 mm <sup>2</sup>	10 AWG
Rated current		20 A	20 A
Rated short-time withstand current (1s)		480 A	
Rated voltage		400 V	150 V
Impulse withstand voltage		6000 V	
Protection		IP 20	NEMA 1

## Mounting Instructions

Rail		DIN3-TH35
Wire stripping length		10.5 mm 0.413 in
Tool		Flat screwdriver Ø 3.5 mm Ø 0.138 in
Torque		0.6 Nm ± 0.1 5.31 lb.in ± 0.885

						Gost and BV: Pending - 2009
--	--	--	--	--	--	-----------------------------

## Ordering Details

### ZS4-SP-R1 Disconnect Screw Clamp Terminal Block

Description	Type	Part Number	Pack <sup>(ing)</sup> pieces	Weight g (1 pce)
Profile aligned with ZS4-SF, plug delivered separately	Grey <input type="checkbox"/>	<b>ZS4-SP-R1</b>	<b>1SNK 506 313 R0000</b>	50 14.20

## ZS4-SP-R1 Terminal Block Accessories

Description	Type	Part Number	Pack <sup>(ing)</sup> pieces	Weight g (1 pce)	
1 <b>End Stops</b> 10 mm 0.394 in	Dark Grey <input type="checkbox"/>	<b>BAM3</b>	<b>1SNK 900 001 R0000</b>	50 13.80	
2 <b>Component Plugs</b> Components in series with circuit	Dark Grey <input type="checkbox"/>	<b>PG5</b>	<b>1SNK 900 401 R0000</b>	20 3.45	
3 <b>Disconnect Plugs</b> Equipped with linking bar	Orange <input type="checkbox"/>	<b>PG5-R1</b>	<b>1SNK 900 402 R0000</b>	20 3.45	
4 <b>Jumper Bars</b>	2 poles 41 A 30 A	Orange <input type="checkbox"/>	<b>JB6-2</b>	<b>1SNK 906 302 R0000</b>	50 1.30
	3 poles		<b>JB6-3</b>	<b>1SNK 906 303 R0000</b>	50 2.10
	4 poles		<b>JB6-4</b>	<b>1SNK 906 304 R0000</b>	50 2.90
	5 poles		<b>JB6-5</b>	<b>1SNK 906 305 R0000</b>	50 3.60
	10 poles		<b>JB6-10</b>	<b>1SNK 906 310 R0000</b>	20 7.40
5 <b>Test Adapters</b>	For test plugs DIA 2 mm 0.079 in	Dark Grey <input type="checkbox"/>	<b>TP2</b>	<b>1SNK 900 203 R0000</b>	20 1.73
	For test plugs DIA 4 mm 0.157 in		<b>TP4</b>	<b>1SNK 900 205 R0000</b>	20 2.42
6 <b>Test Connectors</b>	5.2 mm 0.205 in spacing	Dark Grey <input type="checkbox"/>	<b>TC5</b>	<b>1SNK 900 200 R0000</b>	10 5.23
	End module, 5.2 mm 0.205 in		<b>TC5-R1</b>	<b>1SNK 900 201 R0000</b>	10 5.23
7 <b>Spacers</b> 0.8 mm 0.031 in spacing	Dark Grey <input type="checkbox"/>	<b>ES-TC6</b>	<b>1SNK 900 105 R0000</b>	10 0.80	
8 <b>Terminal Block Markers</b>	Blank card	White <input type="checkbox"/>	<b>MC612</b>	<b>1SNK 150 000 R0000</b>	22 0.06
	Universal wire markers holder	Grey <input type="checkbox"/>	<b>UMH</b>	<b>1SNK 900 611 R0000</b>	10 0.20
	Self adhesive strip	White <input type="checkbox"/>	<b>SAT6</b>	<b>1SNK 900 615 R0000</b>	5 6.00

Some accessories may modify the terminal block's ratings. See complete information in "Technical Datasheet".

