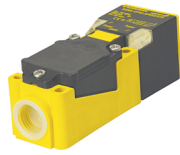


Inductive Rectangular Sensors



Housing Style - Rectangular	Part Number	ID Number	Features	Embeddable	Sensing Range (mm)	Output
CP40 - Embeddable/Nonembeddable, Terminal Chamber	Bi15-CP40-VN4X2/S109	M1526900	Time Delay	•	15	4-Wire NPN
	Ni20-CP40-VN4X2/S109	M1527100	Time Delay		20	
	Bi15-CP40-VP4X2/S109	M1504721	Time Delay	•	15	4-Wire PNP
	Ni30-CP40-VP4X2/S109	M1512521	Time Delay		30	
	Bi15-CP40-VN4X2/S110	M1527000	Time Delay	•	15	4-Wire NPN
	Ni20-CP40-VN4X2/S110	M1527300	Time Delay		20	
	Bi15-CP40-VP4X2/S110	M1509821	Time Delay	•	15	4-Wire PNP
	Ni20-CP40-VP4X2/S110	M1509921	Time Delay		20	
	Bi15-CP40-FDZ30X2	M4224100	Prog. Outputs	•	15	2-Wire AC/DC
	Bi15-CP40-FDZ30X2/S34	M4226100	WFI	•	15	
	Bi15-CP40-FDZ30X2/S97	M4226600	Low Temp. -40°C	•	15	
	Bi15U-CP40-FDZ30X2	M4280601	Uprox	•	15	
	Ni20-CP40-FDZ30X2	M4224200	Prog. Outputs		20	
	Ni35-CP40-FDZ30X2	M4224500	Prog. Outputs		35	
	Ni40U-CP40-FDZ30X2	M4280801	Uprox		40	
	Bi15-CP40-FZ3X2	M1341000	Prog. Outputs	•	15	
	Bi15-CP40-FZ3X2/S97	M1341010	Low Temp. -40°C	•	15	
	Bi15-CP40-FZ3X2/S100	M1377600	High Temp. 100°C	•	15	
	Ni20-CP40-FZ3X2	M1341100	Prog. Outputs		20	
	Ni20-CP40-FZ3X2/S100	M1377500	High Temp. 100°C		20	
	Ni35-CP40-FZ3X2	M1341300	Prog. Outputs		35	
	Ni40-CP40-FZ3X2/S100	M1374802	High Temp. 100°C		40	
	Bi15-CP40-FZ3X2/S109	M1373700	Time Delay	•	15	2-Wire AC
	Bi15-CP40-FZ3X2/S110	M1373500	Time Delay	•	15	
	Ni20-CP40-FZ3X2/S109	M1374500	Time Delay		20	
	Ni20-CP40-FZ3X2/S110	M1374600	Time Delay		20	
	Ni30-CP40-FZ3X2/S109	M1374700	Time Delay		30	
	Ni30-CP40-FZ3X2/S110	M1374400	Time Delay		30	
	Bi15-CP40-VDZ3X2	M4222700	Comp. Outputs	•	15	4-Wire AC/DC
	Bi15-CP40-Y1X	M1012000		•	15	NAMUR
	Ni20-CP40-Y1X	M1012100			20	

WFI = Weld-Field Immune Sensors.

"/S109" Designates on Delay.

"/S110" Designates off Delay.

For detailed sensor specifications see Section M.
Normally Closed versions available upon request, consult factory.



Voltage	Switching Freq. (Hz)	Operating Current (mA)	Operating Temp. (°C)	Protection	Housing	Front Cap/Face	Power LED	Output LED	Mating Cord/ Cable Length/Jacket	Wiring Diagram #	Wiring Diagrams
10-65 VDC	- -	≤200	-25 to +70	IP 67	PBT	PBT	GN	YE	- - - -	1	Diagram 1
	- -	≤200	-25 to +70	IP 67	PBT	PBT	GN	YE	- - - -	1	
10-65 VDC	- -	≤200	-25 to +70	IP 67	PBT	PBT	GN	YE	- - - -	2	Diagram 2
	- -	≤200	-25 to +70	IP 67	PBT	PBT	GN	YE	- - - -	2	
10-65 VDC	- -	≤200	-25 to +70	IP 67	PBT	PBT	GN	YE	- - - -	1	Diagram 3
	- -	≤200	-25 to +70	IP 67	PBT	PBT	GN	YE	- - - -	1	
10-300 VDC 20-250 VAC	60	≤400/300	-25 to +70	IP 67	PBT	PBT	GN	YE	- - - -	3	
	30	≤400/300	-25 to +70	IP 67	PBT	PBT	GN	YE	- - - -	3	
	60	≤400/300	-40 to +70	IP 67	PBT	PBT	GN	YE	- - - -	3	
	60	≤400/300	-30 to +85	IP 67	PBT	PBT	GN	YE	- - - -	3	
	60	≤400/300	-25 to +70	IP 67	PBT	PBT	GN	YE	- - - -	3	
	60	≤400/300	-25 to +70	IP 67	PBT	PBT	GN	YE	- - - -	3	
10-300 VDC 20-250 VAC	20	≤400/300	-25 to +70	IP 67	PBT	PBT	GN	YE	- - - -	3	
	20	≤400/300	-40 to +70	IP 67	PBT	PBT	GN	YE	- - - -	3	
	20	≤400/300	-25 to +100	IP 67	PBT	PBT	GN	YE	- - - -	3	
	20	≤400/300	-25 to +70	IP 67	PBT	PBT	GN	YE	- - - -	3	
	20	≤400/300	-25 to +100	IP 67	PBT	PBT	GN	YE	- - - -	3	
	20	≤400/300	-25 to +70	IP 67	PBT	PBT	GN	YE	- - - -	3	
	20	≤400/300	-25 to +100	IP 67	PBT	PBT	GN	YE	- - - -	3	
20-250 VAC	20	≤400/300	-25 to +70	IP 67	PBT	PBT	GN	YE	- - - -	3	
	20	≤400/300	-25 to +70	IP 67	PBT	PBT	GN	YE	- - - -	3	
	20	≤400/300	-25 to +70	IP 67	PBT	PBT	GN	YE	- - - -	3	
	20	≤400/300	-25 to +70	IP 67	PBT	PBT	GN	YE	- - - -	3	
	20	≤400/300	-25 to +70	IP 67	PBT	PBT	GN	YE	- - - -	3	
	20	≤400/300	-25 to +70	IP 67	PBT	PBT	GN	YE	- - - -	3	
20-250 VAC 20-320 VDC	30	≤400/300	-25 to +70	IP 67	PBT	PBT	GN	YE	- - - -	4	
5-30 VDC	150	Remote	-25 to +70	IP 67	PBT	PBT	N/A	YE	- - - -	5	
	150	Remote	-25 to +70	IP 67	PBT	PBT	N/A	YE	- - - -	5	

Rectangular

For material descriptions see page M36.