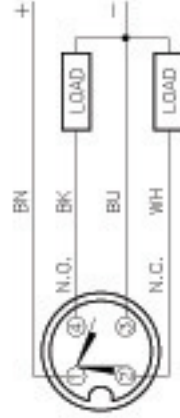
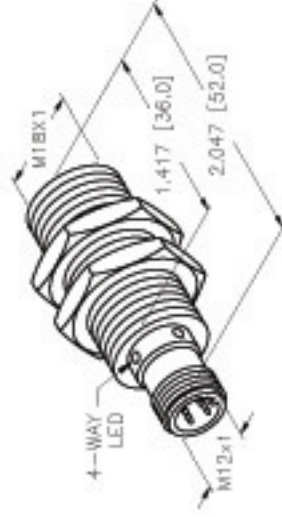
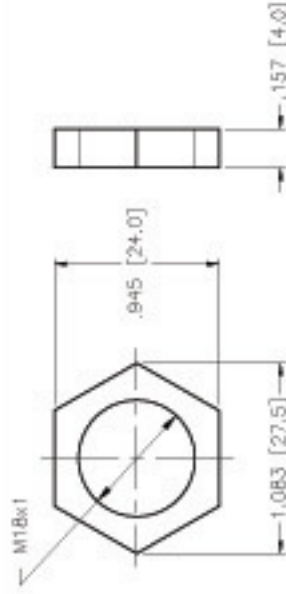


WIRING DIAGRAM



OUTPUT: VP4X

LOCKNUT LN-M1B



SPECIFICATIONS

|                                 |   |
|---------------------------------|---|
| RATED OPERATING DISTANCE        | 5mm [-.197]                               |
| MOUNTING MODE                   | FLUSH                                     |
| MIN. REPEAT ACCURACY            | ±2%                                       |
| TEMPERATURE DRIFT               | ± ±10%                                    |
| HYSTERESIS (SWITCHING DISTANCE) | 3-15%                                     |
| OPERATING TEMPERATURE           | -25°C to +70°C (-13°F to +158°F)          |
| OPERATING VOLTAGE               | 10-65 VDC                                 |
| RESIDUAL RIPPLE                 | ≤ 10%                                     |
| DC RATED OPERATIONAL CURRENT    | ≤ 200 mA                                  |
| NO-LOAD CURRENT                 | ≤ 15 mA                                   |
| RESIDUAL CURRENT                | ≤ 0.1 mA                                  |
| RATED INSULATION VOLTAGE        | ≤ 0.5 kV                                  |
| SHORT-CIRCUIT PROTECTED         | YES                                       |
| MAX VOLTAGE DROP                | ≤ 1.8 V                                   |
| WIRE-BREAKAGE PROTECTION        | YES                                       |
| REVERSE POLARITY PROTECTION     | YES                                       |
| OUTPUT FUNCTION                 | 4-WIRE, CHANGE-OVER, PNP                  |
| SWITCHING FREQUENCY             | ≤ 0.5 kHz                                 |
| HOUSING MATERIAL                | BRASS/CHROME-PLATED                       |
| ACTIVE FACE MATERIAL            | PLASTIC, PA12-GF30                        |
| CONNECTOR                       | M12x1                                     |
| SHOCK RESISTANCE                | 30 g, 11 ms                               |
| VIBRATION RESISTANCE            | 50 Hz 1 mm AMPLITUDE<br>(IN ALL 3 PLANES) |
| DEGREE OF PROTECTION            | IP67                                      |
| SWITCHING STATUS INDICATION     | LED: YELLOW                               |

SOURCE DRAWING - FOR REFERENCE ONLY

|   |                          |   |  |  |
|---|--------------------------|---|--|--|
| RELATED DOCUMENTS<br>1.<br>2.<br>3.<br>4. | 3RD ANGLE PROJECTION<br> | THIS DRAWING IS THE PROPERTY OF TURCK INC. USE OF THIS DOCUMENT WITHOUT WRITTEN PERMISSION IS PROHIBITED. | DATE: 11/12/98<br>DESCRIPTION: BT 5-M1B-VP4X-H1141 | IDENTIFICATION NO.: T1561800<br>REF: B |
|   |                          |   |  |  |
| MATERIAL:                                 |                          | TURCK INC<br>High Technology Sensors and Automation Controls  |  |  |
| FINISH:                                   |                          | FILE: T1561800<br>SHEET 1 OF 1  |  |  |

|     |                |    |          |         |
|-----|----------------|----|----------|---------|
| REV | DESCRIPTION    | BT | DATE     | EDD NO. |
| B   | MODIFY DRAWING | IK | 03/09/00 | T34J7   |