

Couplings

TURCK precision flexible couplings are engineered for optimum performance with TURCK encoders. Designed to connect two misaligned shafts, our beam style couplings offer superior performance, reliability, long life and are easy to install.

Performance: Designed with six overlapping double tapered beams to offer even load distribution, constant velocity and torsional rigidity.

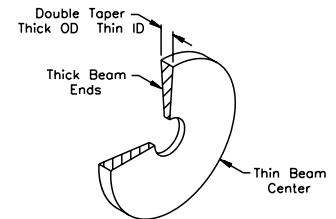
Reliability: Our couplings have exceeded the U.S. military MIL-HDBK-SA specification for flexing beams. Accelerated life tests with excessive loads at 10,000 RPM and 50 million revolutions indicate no sign of fatigue.

Installation: Clean and degrease all shafts, check parallel alignment. Do not exceed misalignment and axial motion specifications. Clamp one end of the coupling to the drive shaft. Insert encoder into the other end. Tap lightly on the coupling hub to stabilize system. Tighten the second screw.

Note: Light should be visible through the beams.



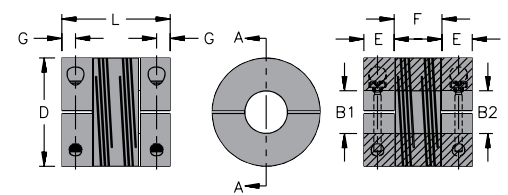
Two sets of three overlapping curved beams



Cross section of one beam

Coupling tabulation - in (mm)

Part Number	D	L	E	F	G	Parallel	Angular misalignment	Axial motion
TFC075-XXX-XXX	0.745 (19.0)	0.750 (19.0)	0.220 (5.6)	0.310 (7.8)	0.095 (2.4)	0.008 (0.20)	5°	±0.005 (0.13)
TFC100-XXX-XXX	0.995 (25.4)	1.000 (25.4)	0.280 (7.1)	0.440 (11.2)	0.125 (3.2)	0.010 (0.25)	5°	±0.010 (0.25)
TFC125-XXX-XXX	1.240 (31.5)	1.250	0.310 (7.87)	0.630 (16.0)	0.140 (3.55)	0.010 (0.25)	5°	±0.012 (0.30)



B1 = encoder shaft
B2 = drive shaft with G10 insert

Part Number	Coupling Diameter	Encoder Shaft	Drive Shaft
TFC075-250-M04	0.750 in	0.25 in	4 mm
TFC075-250-M05	0.750 in	0.25 in	5 mm
TFC075-250-M06	0.750 in	0.25 in	6 mm
TFC075-250-M08	0.750 in	0.25 in	8 mm
TFC075-250-125	0.750 in	0.25 in	0.125 in
TFC075-250-187	0.750 in	0.25 in	0.187 in
TFC075-250-250	0.750 in	0.25 in	0.25 in
TFC075-06M-M04	0.750 in	6 mm	4 mm
TFC075-06M-M05	0.750 in	6 mm	5 mm
TFC075-06M-M06	0.750 in	6 mm	6 mm
TFC075-06M-M08	0.750 in	6 mm	8 mm
TFC075-06M-125	0.750 in	6 mm	0.125 in
TFC075-06M-187	0.750 in	6 mm	0.187 in
TFC075-06M-250	0.750 in	6 mm	0.250 in
TFC100-375-125	1.000 in	0.375 in	0.125 in
TFC100-375-187	1.000 in	0.375 in	0.187 in
TFC100-375-250	1.000 in	0.375 in	0.25 in
TFC100-375-375	1.000 in	0.375 in	0.375 in

Part Number	Coupling Diameter	Encoder Shaft	Drive Shaft
TFC100-375-M04	1.000 in	0.375 in	4 mm
TFC100-375-M05	1.000 in	0.375 in	5 mm
TFC100-375-M06	1.000 in	0.375 in	6 mm
TFC100-375-M08	1.000 in	0.375 in	8 mm
TFC100-375-M10	1.000 in	0.375 in	10 mm
TFC125-12M-125	1.250 in	12 mm	0.125 in
TFC125-12M-187	1.250 in	12 mm	0.187 in
TFC125-12M-250	1.250 in	12 mm	0.250 in
TFC125-12M-375	1.250 in	12 mm	0.375 in
TFC125-12M-500	1.250 in	12 mm	0.5 in
TFC125-12M-M06	1.250 in	12 mm	6 mm
TFC125-12M-M08	1.250 in	12 mm	8 mm
TFC125-12M-M10	1.250 in	12 mm	10 mm
TFC125-12M-M12	1.250 in	12 mm	12 mm
TFC125-375-M12	1.250 in	0.375 in	12 mm
TFC125-375-500	1.250 in	0.375 in	0.5 in

Other options available on request.